



**ONE PASS SOIL CONDITIONING
AS GOOD AS IT GETS**

ROLLING HARROW[®]
Soil Conditioners



Models
1245, 1245D,
1645 and 1645D

umequip.com

SEEDBED TILLAGE



**ONE PASS SOIL CONDITIONING
AS GOOD AS IT GETS**

ROLLING HARROW®

Soil Conditioners



Models
1245, 1245D,
1645 and 1645D

umequip.com

SEEDBED TILLAGE

Unverferth® **ROLLING HARROW®**

ROLLING HARROW SOIL CONDITIONER

Help ensure optimum performance from your high-value seed by preparing a seedbed that's as good as it gets. Hitch the Unverferth® Rolling Harrow® soil conditioner to your tillage tool, and the result is a ready-to-plant seedbed with coarse soil on top that resists crusting and finer particles at planting depth for greater seed-to-soil contact for quicker, more uniform germination and emergence. Choosing the correct Rolling Harrow soil conditioner to meet your needs depends on your operation and tillage practices.

ALL MODELS FEATURE

- Up to 22" of ground clearance during transport while contributing little additional weight to the lead tillage tool for reduced stress and increased life
- Telescopic tongue for easily matching the turning radius of the lead implement
- Only one set of tractor hydraulics required; dual hoses and/or selector valves are optional for models up to 45'; two sets of hydraulics on 47' and larger models
- All hoses include end caps and are routed through mainframe for longer life
- Standard drop-leg jack for convenient hitching and unhitching
- High-clearance, arched and oscillating roller frame keeps both baskets or drums working the soil, even in the most extreme, rocky conditions
- Basket arm pivot cover prevents rocks and debris from accumulating to ensure baskets follow ground contours

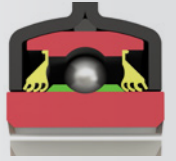
IN THIS BROCHURE...

- **Product Overview** 2
- **Model 1245/1245D Features** 4
- **Model 1645/1645D Features** 5
- **Double Basket Features** 6
- **Basket Drum Combo Features** 7
- **Folding Designs**..... 8
- **Options** 9
- **Cover Crop Seeder** 10–11
- **Hitch Options** 12
- **Specifications 1245/1245D** 13
- **Specifications 1645/1645D** 14

With nearly a 40-year, field-proven legacy, the Unverferth Rolling Harrow soil conditioner is available with many choices to meet your individual needs, including a high-gloss, tractor red or green powder-coat finish for a long-lasting new look.



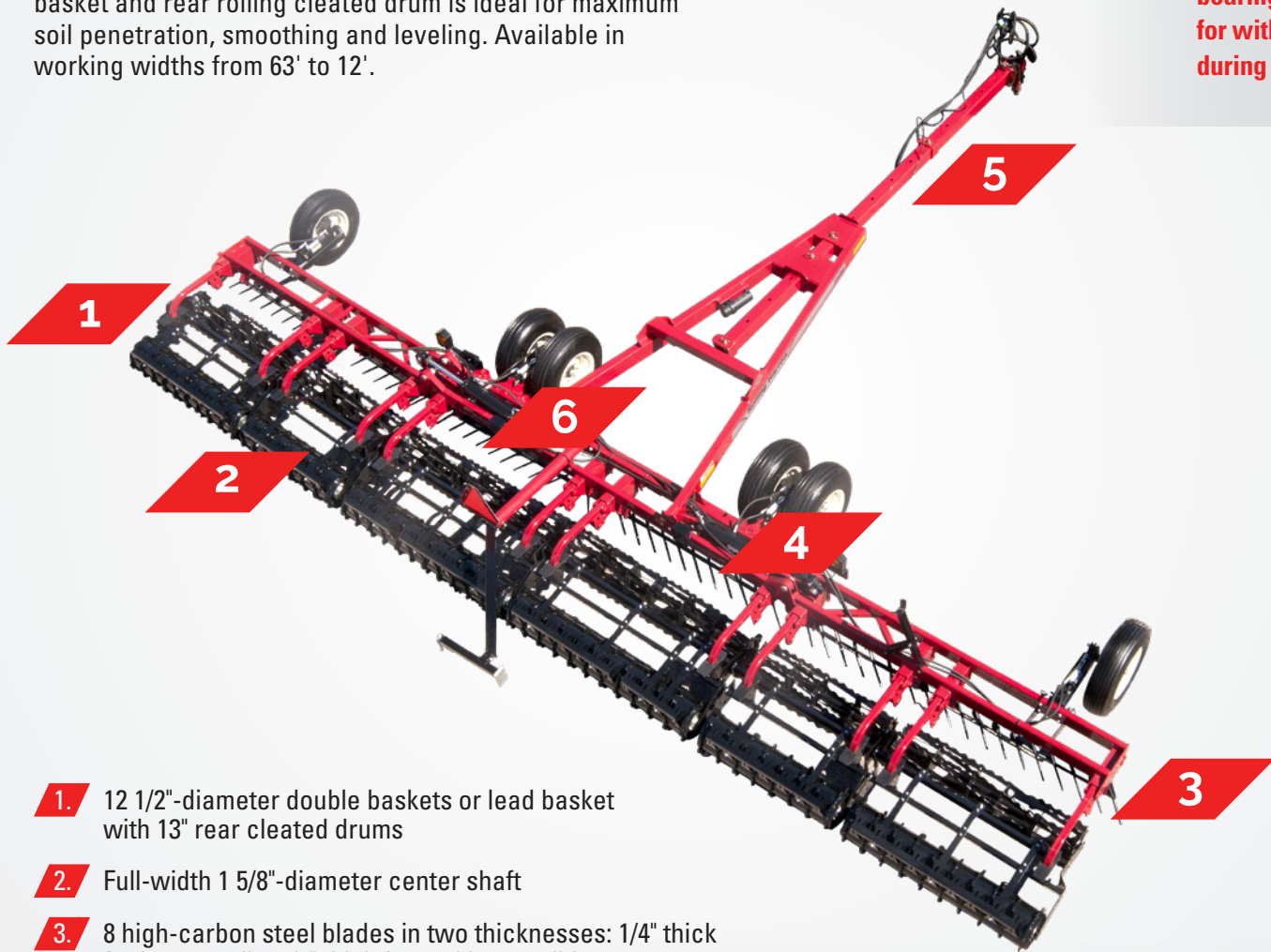
Unverferth® ROLLING HARROW®



All models feature patented roller bearings with triple-lip design for withstanding tremendous vibration during high-speed, high-torque operations.

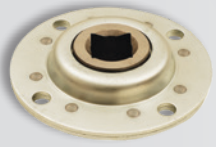
MODEL 1245 AND 1245D

For higher-acreage, conventional-speed tillage operations behind a field cultivator or disk, the double-basket model 1245 or model 1245D with the combination of a front basket and rear rolling cleated drum is ideal for maximum soil penetration, smoothing and leveling. Available in working widths from 63' to 12'.



1. 12 1/2"-diameter double baskets or lead basket with 13" rear cleated drums
2. Full-width 1 5/8"-diameter center shaft
3. 8 high-carbon steel blades in two thicknesses: 1/4" thick for looser soils; 3/8" thick for rockier conditions
4. 1 13/16" blade depth
5. Extendable 5" x 5" tongue
6. Optional pin adjustment for the roller frame lets you tailor your tillage for either greater tillage action or greater firming action for your choice of leveling aggressiveness

MODEL OVERVIEWS



tapered flanged, 4-bolt
lip seal and a square bore
resist tremendous side-load stresses
during high-acreage operation.

MODEL 1645 AND 1645D

For higher-speed and higher-acreage soil finishing behind vertical tillage tools, field cultivators and disks, the double-basket 1645 or the model 1645D combination basket/drum design provide the best solution. Available in working widths from 59' to 26'.



1. 16"-diameter double baskets or lead basket with rear cleated drum
2. Full-width 2 3/8"-diameter steel center shaft
3. 10 high-carbon steel 3/8"-thick blades
4. 1 3/16" blade depth
5. Extendable 5" x 5" tongue
6. Free-floating rollers allow the implement to follow the ground contours for optimum tillage leveling





DOUBLE BASKET

MODELS 1245 AND 1645

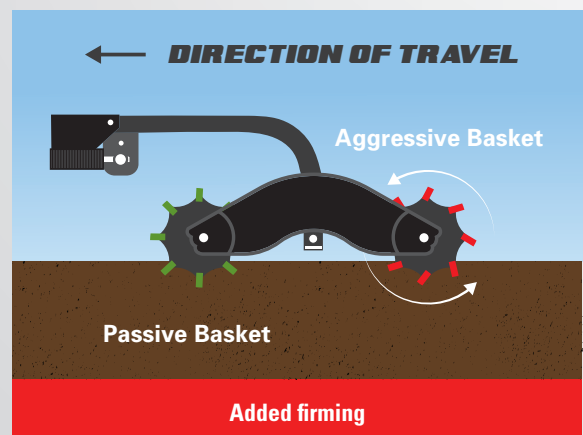
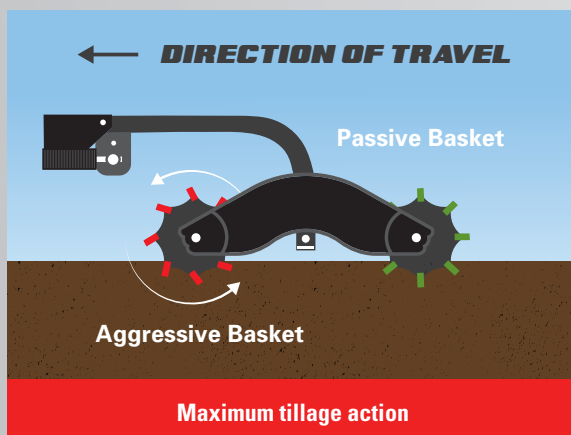
When you need maximum soil conditioning behind your field cultivator or high-speed tillage tool, look to the double-basket models 1245 or 1645. The lead aggressive basket cuts into the soil to further break down soil clods. The larger clods are propelled into the rear basket for further conditioning. The result is finely textured soil in the first 1–2" for an excellent seedbed and a rough-textured surface that resists crusting.

EXCLUSIVE BASKET DESIGN

- The aggressive lead roller on all Rolling Harrow soil conditioner models features spiraled pitched blades for maximum soil penetration and shattering, soil conditioning, residue and chemical mixing
- The passive trailing roller features spiraled, straight blades that smooth and level the surface for quicker, more uniform germination and emergence
- Robotically welded for the greatest manufacturing consistency and enhanced longevity
- Single-piece, high-carbon steel serrated blades for ideal tillage action
- Round center shaft for full-width basket support
- Reversible double-basket assembly for extra firming action in lighter soils
- All baskets feature notched endplates and reinforcing disks for added soil penetration and durability



Arched frame design



BASKET/DRUM DESIGN

MODELS 1245D AND 1645D

For more leveling action in your fields, the 1245D and 1645D meet your needs. They combine the exclusive aggressive Rolling Harrow basket design with a rear drum for a well-conditioned seedbed with added leveling. The rear drum pushes stones into the soil and reduces air pockets for enhanced seed to soil contact, leaving a level finish.

- All-welded construction with staggered 1-1/2" tall cleats creates channels in the soil for increased water absorption and reduced runoff and helps drive the drum through the field
- Reversible scraper blades for keeping drum clean during operation
- Automatic hydraulic transport lock maintains drum ground clearance position while in transport on models with 15' bases and larger
- The trailing cleated rolling drum pushes down rocks and enhances soil firming in lighter soils
- Model 1245D drums provide 37 lb./ft of force and model 1645D 44 lb./ft. of pressure



Basket/Drum combo



Drum scrapers





FOLDING DESIGNS

VERTICAL, CROSS, STACK OR FLAT FOLDING

- Rolling Harrow soil conditioners are available, depending on working size, in flat-fold, stack-fold, cross-fold and vertical-fold models
- Tongue length is adjustable from 10'2" to 19'2" on models with 12' bases, and 12'10" to 21'10" for models with 15' bases, for additional turning clearance
- Dual transport wheels provide exceptional stability during transport
- Wing gauge wheels are standard on cross-fold and vertical-fold models and optional on other models with 7' to 11' wings
- Models with 47' to 63' widths can be equipped with available castering gauge wheels for easier in-field turning
- All models are equipped with a standard lighting package, which includes flashing amber and red taillights that meet all state standards for lighting for transport safety. An SMV emblem and reflective tape are also standard



Stack folding



Cross folding



Vertical folding



OPTIONS

OPTIONAL LEVELING BARS

The optional leveling bar for models 1245 and 1245D knocks down ridges, leaving an even surface for the most effective conditioning possible. The bar features a tool-free, spring-pressure adjustment for fine-tuning aggressiveness, or it can be pinned up for high-residue fields. They can be factory installed, or easily added afterwards.



Choices of leveling bars include:

- Spike-tooth with forged 3/4" x 11" diamond-shaped teeth for heavier soils with minimal residue
- Diagonal and curved round-tooth with heat-treated 3/4" x 12" teeth for heavier soils and heavier residue
- Coil-tine with 3/8" x 17"-long spring tines for fields with lighter soils and heavy residue



- Optional soil scraper kit for transport wheels for cleaner, more efficient operation





COVER CROP SEEDER



Field planted with Rolling Harrow soil conditioner equipped with cover crop seeder.

The tillage tool that has been preparing the best one-pass seedbed for nearly 40 years can plant your cover crops quickly and effectively with the cover crop seeder option for high-speed planting with optimal seed-to-soil contact for a consistent stand.

COVER CROP SEEDER



Even distribution for optimal seed coverage.

- Features 40.5 ft³ capacity (32.5 bu.)
- Available with new Rolling Harrow 1245 and 1245D models from 18' to 37' with stack- or flat-folding design, and can easily be mounted to most previous models in those sizes
- Reliable air delivery with tapered seed deflectors for greater seeding accuracy
- Seeding rate controlled by tractor speed and electric-over-hydraulic meter control
- Roller-style, chevron meter design creates continuous seed flow for most any cover crop for an even stand
- Slide gates provide easy, manual row shut-off of individual row units
- Easy cleanout with removable seed meters
- Can be used by itself, or in combination with lead tillage tool, for the ideal cover crop seedbed
- Quickly monitor fan pressure, seed level and seed meter function with unit-mounted indicator lights
- Standard on/off operation plumbed with the hydraulic raise/lower of the machine or with cab-mounted foot switch
- Ladder and platform for easy filling
- Side-mounted sight windows for quickly monitoring seed level
- Weather-tight roll tarp with ground-level operation keeps the contents dry and debris free
- Hydraulic drive metering with flow requirements of 22 gpm at 2,200 psi with case drain necessary



Seed deflector



Indicator lights



HITCH OPTIONS

Rolling Harrow soil conditioner tongue length is important for proper turning when hitched behind your tillage tool. A shortened tongue length for transport is important for enhanced transport safety and navigating tight roadway turns.

You get both with the Rolling Harrow soil conditioner's optional hydraulically retractable tongue with complete and convenient in-cab control.



Hydraulically retractable tongue

Two locking pins are hydraulically actuated, allowing the operator to extend the tongue length by driving the tractor forward or shortening the tongue by backing up. The pins automatically engage at the desired position to lock the hitch in position. Internally mounted bearings on all four tongue sides ensure smooth, effortless extension and retraction. Optional electric-over-hydraulic operation switch saves a tractor remote for other uses.

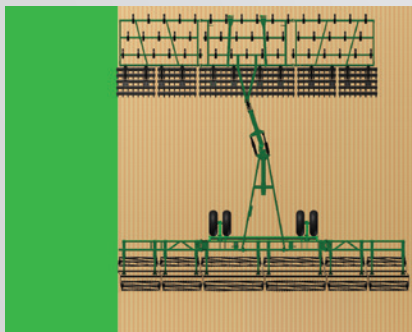
The gooseneck hitch option means even tighter turns at field ends. The hitch raises the tongue height by 2' to clear the lead implement when turning and also lengthens the tongue by 2'.



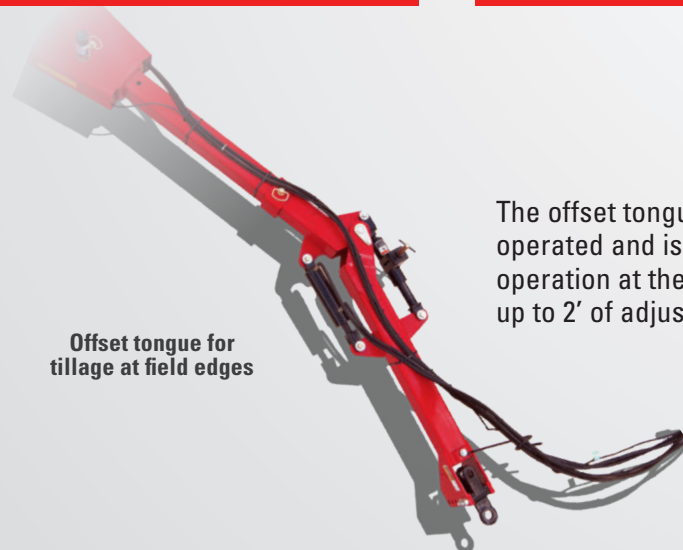
Gooseneck hitch



Gooseneck hitch



Hydraulic-operated offset tongue



Offset tongue for tillage at field edges

The offset tongue is hydraulically operated and is ideal for tillage operation at the field's edge with up to 2' of adjustment.

SPECIFICATIONS

Rolling Harrow® Models 1245 and 1245D

Working Width	Fold Type	Trans. Width	Trans. Height*	Min Length	Max Length	Width				1245		1245D	
						Base	Wing Total	Mid Wing	End Wing	Tire Size	Approx. Weight w/ Harrow	Tire Size	Approx. Weight w/ Harrow
63'	Vertical 5-Sec.	16' 6"	15' 10"	32' 11"	41' 1"	15'	24'	13'	11'	11L x 15	13,042 lbs.	11L x 15	14,850 lbs.
61'	Vertical 5-Sec.	16' 6"	15' 10"	32' 11"	41' 1"	15'	23'	13'	10'	11L x 15	12,624 lbs.	11L x 15	14,370 lbs.
59'	Vertical 5-Sec.	16' 6"	14' 11"	32' 11"	41' 1"	15'	22'	12'	10'	11L x 15	12,156 lbs.	11L x 15	13,862 lbs.
57'	Vertical 5-Sec.	16' 6"	14' 11"	32' 11"	41' 1"	15'	21'	12'	9'	11L x 15	11,768 lbs.	11L x 15	13,415 lbs.
55'	Vertical 5-Sec.	16' 6"	13' 11"	32' 11"	41' 1"	15'	20'	11'	9'	11L x 15	11,385 lbs.	11L x 15	12,970 lbs.
53'	Vertical 5-Sec.	16' 6"	13' 11"	32' 11"	41' 1"	15'	19'	11'	8'	11L x 15	10,972 lbs.	11L x 15	12,492 lbs.
51'	Vertical 5-Sec.	16' 6"	13' 11"	32' 11"	41' 1"	15'	18'	11'	7'	11L x 15	10,864 lbs.	11L x 15	12,340 lbs.
49'	Vertical 5-Sec.	16' 6"	13' 11"	32' 11"	41' 1"	15'	17'	11'	6'	11L x 15	10,146 lbs.	11L x 15	11,564 lbs.
47'	Vertical 5-Sec.	16' 6"	13' 11"	32' 11"	41' 1"	15'	16'	11'	5'	11L x 15	9,968 lbs.	11L x 15	11,325 lbs.
45'	Cross	16'	13' 4"	24' 2"	32' 4"	15'	15'	-	15'	9.5L x 15	8,880 lbs.	9.5L x 15	10,176 lbs.
43'	Cross	16'	12' 10"	24' 2"	32' 4"	15'	14'	-	14'	9.5L x 15	8,597 lbs.	9.5L x 15	9,830 lbs.
41'	Cross	16'	12' 6"	24' 2"	32' 4"	15'	13'	-	13'	9.5L x 15	8,314 lbs.	9.5L x 15	9,485 lbs.
40'	Cross	13' 6"	14'	23' 2"	31' 2"	12'	14'	-	14'	9.5L x 15	7,850 lbs.	9.5L x 15	8,990 lbs.
39'	Cross	16'	12'	24' 2"	32' 4"	15'	12'	-	12'	9.5L x 15	7,806 lbs.	9.5L x 15	8,936 lbs.
38'	Cross	13' 6"	13' 7"	23' 2"	31' 2"	12'	13'	-	13'	9.5L x 15	7,452 lbs.	9.5L x 15	8,530 lbs.
37'	Stack	16' 5"	11'	19' 5"	30' 5"	15'	11'	-	11'	9.5L x 15	5,810 lbs.	9.5L x 15	6,880 lbs.
36'	Cross	13' 6"	13' 1"	23' 2"	31' 2"	12'	12'	-	12'	9.5L x 15	7,444 lbs.	9.5L x 15	8,480 lbs.
35'	Stack	16' 2"	9' 9"	19' 5"	30' 5"	15'	10'	-	10'	9.5L x 15	5,305 lbs.	9.5L x 15	6,313 lbs.
34'	Cross	13' 6"	12' 7"	23' 2"	31' 2"	12'	11'	-	11'	9.5L x 15	6,671 lbs.	9.5L x 15	7,648 lbs.
33'	Stack	16'	8' 9"	19' 5"	30' 5"	15'	9'	-	9'	9.5L x 15	5,155 lbs.	9.5L x 15	6,100 lbs.
32'	Cross	13' 6"	12' 1"	23' 2"	31' 2"	12'	10'	-	10'	9.5L x 15	6,280 lbs.	9.5L x 15	7,195 lbs.
31'	Stack	15' 11"	8' 1"	19' 5"	30' 5"	15'	8'	-	8'	9.5L x 15	4,935 lbs.	9.5L x 15	5,818 lbs.
30'	Stack	13' 5"	10' 6"	19' 5"	30' 5"	12'	9'	-	9'	9.5L x 15	4,790 lbs.	9.5L x 15	5,655 lbs.
29'	Flat	15' 5"	5' 11"	19' 1"	30' 1"	15'	7'	-	7'	9.5L x 15	4,730 lbs.	9.5L x 15	5,568 lbs.
28'	Stack	13' 5"	9' 6"	19' 5"	30' 5"	12'	8'	-	8'	9.5L x 15	4,425 lbs.	9.5L x 15	5,225 lbs.
27'	Flat	15' 5"	5' 11"	19' 1"	30' 1"	15'	6'	-	6'	9.5L x 15	4,575 lbs.	9.5L x 15	5,356 lbs.
26'	Stack	13' 2"	8' 6"	19' 5"	30' 5"	12'	7'	-	7'	9.5L x 15	4,280 lbs.	9.5L x 15	5,035 lbs.
25'	Flat	15' 5"	5' 11"	19' 1"	30' 1"	15'	5'	-	5'	9.5L x 15	4,065 lbs.	9.5L x 15	4,785 lbs.
24'	Flat	12' 5"	5' 11"	19' 1"	30' 1"	12'	6'	-	6'	9.5L x 15	4,085 lbs.	9.5L x 15	4,783 lbs.
23'	Flat	15' 5"	5' 11"	19' 1"	30' 1"	15'	4'	-	4'	9.5L x 15	3,930 lbs.	9.5L x 15	4,588 lbs.
22'	Flat	12' 5"	5' 11"	19' 1"	30' 1"	12'	5'	-	5'	9.5L x 15	3,580 lbs.	9.5L x 15	4,217 lbs.
21'	Flat	15' 5"	5' 11"	19' 1"	30' 1"	15'	3'	-	3'	9.5L x 15	3,780 lbs.	9.5L x 15	4,395 lbs.
20'	Flat	12' 5"	5' 11"	19' 1"	30' 1"	12'	4'	-	4'	9.5L x 15	3,445 lbs.	9.5L x 15	4,020 lbs.
18'	Flat	12' 5"	5' 11"	19' 1"	30' 1"	12'	3'	-	3'	9.5L x 15	3,295 lbs.	9.5L x 15	3,825 lbs.
15'	Rigid	15' 5"	-	19' 1"	30' 1"	15'	-	-	-	9.5L x 15	2,750 lbs.	9.5L x 15	3,185 lbs.
12'	Rigid	12' 5"	-	19' 1"	30' 1"	12'	-	-	-	9.5L x 15	2,290 lbs.	9.5L x 15	2,640 lbs.

* With leveled tongue

SPECIFICATIONS

Rolling Harrow® Models 1645 and 1645D

Working Width	Fold Type	Trans. Width	Trans. Height*	Min Length	Max Length	Base Width	Wing Width	Outlets Req'd	Model 1645			Model 1645D		
									Tire Size	Approx weight	Wing Lift Wheels	Tire size	Approx Weight	Wing Lift Wheels
59'	5-Sec.	16' 6"	14' 4"	32' 1"	41' 1"	15'	22'	Dual	11L x 15	14,300 lbs.	Std.	11L x 15	15,200 lbs.	Std.
57'	5-Sec.	16' 6"	14' 4"	32' 1"	41' 1"	15'	21'	Dual	11L x 15	13,850 lbs.	Std.	11L x 15	12,750 lbs.	Std.
55'	5-Sec.	16' 6"	14' 4"	32' 1"	41' 1"	15'	20'	Dual	11L x 15	13,400 lbs.	Std.	11L x 15	14,300 lbs.	Std.
53'	5-Sec.	16' 6"	14' 4"	32' 1"	41' 1"	15'	19'	Dual	11L x 15	12,900 lbs.	Std.	11L x 15	13,800 lbs.	Std.
51'	5-Sec.	16' 6"	14' 4"	32' 11"	41' 1"	15'	18'	Dual	11L x 15	12,500 lbs.	Std.	11L x 15	13,500 lbs.	Std.
49'	5-Sec.	16' 6"	14' 4"	32' 11"	41' 1"	15'	17'	Dual	11L x 15	11,800 lbs.	Std.	11L x 15	12,600 lbs.	Std.
47'	5-Sec.	16' 6"	14' 4"	32' 11"	41' 1"	15'	16'	Dual	11L x 15	11,500 lbs.	Std.	11L x 15	12,300 lbs.	Std.
45'	Cross	16'	14' 3"	24' 2"	32' 4"	15'	15'	Single	9.5L x 15	10,450 lbs.	Std.	9.5L x 15	11,610 lbs.	Std.
43'	Cross	16'	13' 8"	24' 2"	32' 4"	15'	14'	Single	9.5L x 15	10,115 lbs.	Std.	9.5L x 15	11,240 lbs.	Std.
41'	Cross	16'	13' 4"	24' 2"	32' 4"	15'	13'	Single	9.5L x 15	9,785 lbs.	Std.	9.5L x 15	10,870 lbs.	Std.
40'	Cross	14' 5"	14' 3"	23' 2"	33' 10"	12'	14'	Single	9.5L x 15	9,130 lbs.	Std.	9.5L x 15	10,060 lbs.	Std.
39'	Cross	16'	12'	24' 2"	32' 4"	15'	12'	Single	9.5L x 15	9,185 lbs.	Std.	9.5L x 15	9,995 lbs.	Std.
38'	Cross	14' 5"	13' 6"	23' 2"	33' 10"	12'	13'	Single	9.5L x 15	8,870 lbs.	Std.	9.5L x 15	9,775 lbs.	Std.
36'	Cross	14' 5"	13' 6"	23' 2"	33' 10"	12'	12'	Single	9.5L x 15	8,615 lbs.	Std.	9.5L x 15	9,485 lbs.	Std.
34'	Cross	14' 5"	13' 6"	23' 2"	33' 6"	12'	11'	Single	9.5L x 15	8,470 lbs.	Std.	9.5L x 15	9,305 lbs.	Std.
32'	Cross	14' 5"	13' 6"	23' 2"	32' 11"	12'	10'	Single	9.5L x 15	8,325 lbs.	Opt.	9.5L x 15	9,130 lbs.	Std.
30'	Cross	14' 5"	13' 4"	23' 2"	32' 5"	12'	9'	Single	9.5L x 15	8,085 lbs.	Opt.	9.5L x 15	9,040 lbs.	Std.
28'	Cross	14' 5"	11' 8"	23' 2"	32'	12'	8'	Single	9.5L x 15	7,915 lbs.	Opt.	9.5L x 15	8,860 lbs.	Std.
26'	Cross	14' 5"	11' 4"	23' 2"	31' 8"	12'	7'	Single	9.5L x 15	7,780 lbs.	Opt.	9.5L x 15	8,450 lbs.	Std.

* With leveled tongue

To learn more about the Rolling Harrow soil conditioner and making your seedbed as good as it gets, visit your nearest Unverferth dealer, or umequip.com for details.

Due to continuing improvements in the design and manufacture of Unverferth products, all specifications contained herein are subject to change without notice. For relevant patent marking, please visit unverferth.com/patents.

Unverferth
Manufacturing Company, Inc.

© 2020 Unverferth Manufacturing Co., Inc.
Printed in U.S.A.

P.O. Box 357 | Kalida, OH 45853 | unverferth.com | 419.532.3121

®™ Trademarks, registered or applied for, of Unverferth Manufacturing Co., Inc., Kalida, OH

Additional facilities in California, Georgia, Iowa, Nebraska, North Dakota, Oregon, Texas, Ontario and Saskatchewan, Canada



RHALL0251010M01