

# ATHENS

## MODEL 65



*The Model 65 is ideal for wildlife applications and management. This lift-type tandem disc harrow is available in 8' 0", 8' 4", and 9' 6" widths making it the perfect choice for plantations and ranches.*



" WE PLOW THE EARTH "



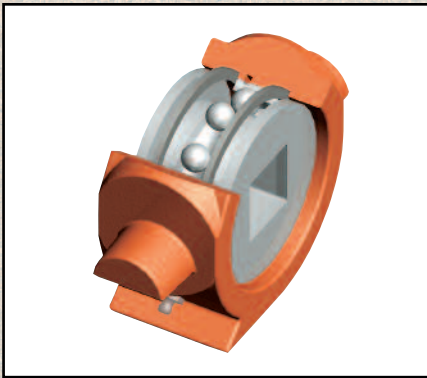


## STANDARD EQUIPMENT

- Disc Blades, 22" or 24" Diameter
- Relube Quadraseal Ball Bearings
- Rigid Bearing Hangers with Wear Plates
- 1.25" Square Cold Rolled Axle
- Spacing, 9" or 9" Front & 7.5" Rear
- Adjustable Angle of Cut: 15°, 18° or 21°
- Gang Wrench

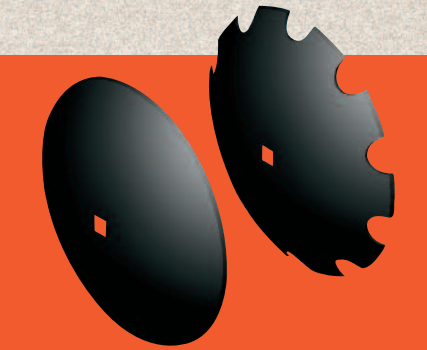
## OPTIONAL EQUIPMENT

- Spring Bearing Hangers with Wear Plates
- Scrapers
- Cover Discs
- Balk Buster



### Quadraseal Ball Bearings

Strong relube QUADRASEAL ball bearings on the Model 65 mean long life and less downtime.



### DISC BLADES

Available in 22 and 24 inch sizes. Athens Plow offers tailored solutions to meet your disking needs.

**Smooth blades** are best utilized in normal field conditions. They are more economical, wear longer, weigh more than cutout blades, and cut crop residue evenly.

**Cutout blades** are more aggressive and trap residue better than smooth blades.

## MODEL 65 SPECIFICATIONS

WIDTH OF CUT	NUMBER OF DISCS	DISC SPACING		NUMBER OF BEARINGS	*APPROX. DBHP	APPROX. WEIGHT (lbs.)
		FRONT	REAR			
8' 0"	20	9"	9"	8	70	1,700
8' 4"	22	9"	7.5"	8	75	1,800
9' 6"	24	9"	9"	8	85	2,000
	26	9"	7.5"			

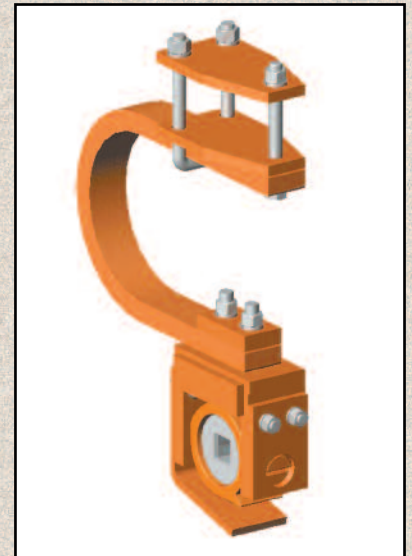
\*Approximate Draw Bar Horse Power is only a guide. Extremely hard, soft, hilly or boggy conditions will change these figures.



**Versatility: The Hitch** on the Model 65 is designed to adapt to a Category II Free Link or a Category II Quick Hitch.



**The Rigid Bearing Hanger** features a **Wear Plate** that bolts onto the front-side of the Bearing Hanger adding extra protection to the front and bottom of the Bearing Housing.



**The Spring Bearing Hanger** provides maximum strength without sacrificing flexibility. It also features a **Wear Plate** which protects the front and bottom of the Bearing Housing.

Athens Plow Co., Inc. guarantees each piece of equipment against defective materials and workmanship for a period of one year from the date of delivery to the purchaser unless otherwise specified. Athens Plow Co., Inc. reserves the right to make changes and/or improvements in design and construction of parts or machines without notice or obligation.