

N SERIES

115 - 201 HP

VALTRA



**MACHINE
OF THE YEAR 2016**



**YOUR
WORKING
MACHINE**

SMART IN SIZE. PERFECT IN PERFORMANCE.

Your land is your life.
Your farm is your foundation.
Your crop is your career.
Your tractor is the tool of your trade.

That's why it's a Valtra.
Like the trustworthy tools of a craftsman, your Valtra is what you need to get the job done. Every day. Every time. In every working environment.

At Valtra, we have always chosen the path less walked – because where we come from, that's what the paths are like. We don't hesitate to walk the extra mile for you. You don't compromise, so neither do we.

Get the job done. Get a Valtra. Your working machine.



YOUR

Big where it matters..... 4
Reliable, easy to use, low cost of ownership. ..6

WORKING

Highlights..... 8
New cab 10
SmartTouch armrest..... 12
Versatile workhorse 14

MACHINE

Fuel saving technology..... 16
Engine..... 18
Transmission 20
Unlimited..... 22
Options 24
Precision Farming..... 26
Services 28
Technical data..... 32

NO CHALLENGE TOO BIG. NO TASK TOO SMALL.

The engine, transmission, chassis and cab are all made in Finland, with no compromises. Every year we build 23,000 Valtra tractors for customers in 75 countries. This makes us the leading tractor manufacturer in Scandinavia and the fifth largest western tractor brand in the world. We have been in Brazil since 1960, where we are the market leader in high horsepower tractors.





Where we come from, we know what it's like to work day and night, summer and winter. We know about balancing jobs and requirements, without compromising on any of them. We also know our customers. We don't talk much, but we listen. You told us that there are three big things you look at when you choose a Valtra. It has to be reliable, around the year and from one year to the next. It has to be easy to use when you are working hard. And it has to provide the lowest total operating costs. That's how we built the fourth generation Valtra N Series. It has many of the features as its big brother, the T Series, but in a very compact

form. In fact the 185 hp engine makes the new N Series the most powerful 4-cylinder tractor there is, with the best power/weight ratio in its class. This tractor is light and agile, but it puts power on the ground and has plenty of power for PTO.

The 4-cylinder N Series is the workhorse of the Valtra range. With every new model, we make various improvements, but one thing remains the same. This is a reliable tractor that will work hard for you, year after year.

PLANT YOUR MONEY WISELY.

You work hard for your money and want good value when you spend it. The N Series tractor makes every penny count. Every day, every season, the N Series is your working machine.



Reliability, year after year

We know that if we want to get the job done right, we'd better do it ourselves. That's why we make the major components in-house. We've designed and engineered the intelligent chassis, robust transmission and spacious cab ourselves. AGCO Power, the "Sisu", has been the Valtra engine for more than 60 years. It is an engine that sets the standard for reliability.

Ease of use for any job

The N Series provides power for pulling a plough and agility for moving hay bales. It gives excellent visibility for precision work and versatility with PTO for power-hungry implements. With the N Series, you don't have to work harder, because you are working smarter. The transmission operation, with a new drive lever could not be easier. The tractor is compact, but inside the cab you have plenty of space and comfort. Daily maintenance is simple: checking the oil and

cleaning the filters take almost no time at all. And finally, you get the best fit for your farm, with the right size and the options you need, factory installed and covered by warranty.

Low total cost of ownership

Total cost of ownership is about the big picture and the small details. The big thing is to have a hard-working machine that is built for the task at hand. But we've gone further with some major innovations. They consist of several features that lighten the load on

your wallet. The 600 hour service interval cuts maintenance costs and the SCR Only AGCO Power engines give you the best overall liquid economy. Select Premium care or a service contract that matches your monthly costs to your annual running hours. AGCO Finance helps you to find an optimal solution for payment and use. At the end of the road, choosing genuine Valtra parts and service, guarantees the highest resale value for your tractor.



WITH THE RIGHT TOOL FOR THE JOB, IT TAKES LESS WORK TO DO MORE.

Get more done with less effort, with the right tool for your job. We build your tractor to meet your requirements, creating a working machine as versatile as you are. Come for a test drive!



1. Skyview cab with 365 Day visibility – nearly 7 m² of window surface
2. Pneumatic AutoComfort cab suspension
3. Hydraulic front axle suspension
4. 270° windscreen wiper and heated front and rear windows
5. Max total weight 11 t
6. Turning radius 4.5 m
7. Integrated 47 kN front lift and 78 kN rear lift
8. Factory installed front loader with integrated casted subframe
9. The most comfortable and quiet (70dB) cab with 1 or 2 doors
10. Best ground clearance on the market (55 cm)
11. Electric TwinTrac reverse driving and 180° swivelling seat
12. Safety cameras
13. Efficient LED working lights
14. The most powerful 4 cylinder engine with max 185 hp and 730 Nm torque
15. Valtra Power Management
16. EcoPower fuel saving option
17. Fuel efficient Stage 4 engine with SCR Only
18. 5 speed powershift with Hitech, Active and Versu, or Direct CVT
19. Powershift Revolution
20. Low idling speed 700 rpm
21. Load sensing hydraulics with up to 200 l pump capacity
22. 600 hour service interval
23. Integrated standard or pivoting front linkage
24. Fuel tank up to 315l capacity
25. Electric 3 speed PTO with Sigma Power and ground speed PTO
26. Roof air intake for engine
27. ASR (Automatic slip regulator)



13

25

27



COMPACT OUTSIDE, SPACIOUS INSIDE.

Compact on the outside but spacious inside. Climb into the driver's seat and relax. When it comes to comfort and safety, we make no compromises.

Quality you can see but not hear

The unique convex shape of the cab gives you more space where you need it: at shoulder and elbow height. The windows provide almost 7 m² of visibility. The cab is narrow in the front to give space for the exhaust pipe and the high air intake. It's built for reverse driving with TwinTrac, with a 180° swiveling seat and plenty of legroom in the rear. As always with a Valtra tractor, the N series cab is a quiet workplace. Thanks to the solid, well-fitting doors (one or two), excellent insulation, and fewer holes for piping, the noise level in the cab is approximately 70 dB. Even in rugged working conditions there is no extra noise inside the cab.

You work better when you see better

The Valtra cab gives you the best visibility in all directions with the Valtra 365 Day visibility concept: day or night, summer or winter, in reverse driving or doing front loader work. The new Skyview cab option gives you the ultimate visibility for reverse driving and the roof window provides great visibility for front loader work. The narrow pillars and exhaust pipe enable you to see more. The 270° windshield wiper keeps the heated front windscreen clear in any weather. Premium LED working lights provide visibility in all directions. With black panel mode you can dim the interior lighting to maximize visibility outside. Two safety cameras give you a clear view of the hitch or implement.



Don't work harder. Work smarter.

Everything you need is at your fingertips with the new 5-speed powershift or Direct CVT. You have a drive lever for driving and a joystick for controlling the hydraulics. You have four seat options – from mechanical suspension to the Valtra Evolution seat with air-conditioning and pneumatic suspension. Two cab suspensions are available: the luxury pneumatic AutoComfort and a new mechanical suspension system. Finally, it's going to be a long day, so there's a coolbox to keep your lunch fresh.

Technology in the background. Ease of use up front.

It's not about technology. It's about making work as easy and efficient as possible. Automatic features are at your fingertips when you need them – push the ECO button and engage U-Pilot or transmission automatics, to make the tractor handle itself. With AutoGuide you drive with cm accuracy. With SmartTouch 9" terminal you control automatic steering and other technology options. They are easy to use and ready to use when the tractor arrives at your farm, all covered by the same service and warranty.

COMMAND YOUR N SERIES

Valtra SmartTouch has raised usability to the new level. It's more intuitive than your SmartPhone. Settings are easily accessible within only two taps or swipes and all technology is integrated in to the new easy-to-use format: Guidance, ISOBUS, Telemetry, AgControl and TaskDoc.



Easy to navigate menu structure.



Logical to set up settings with swipe gestures. All settings are automatically stored in memory.



Intuitive way to set up settings with large controls and easy to understand functions.



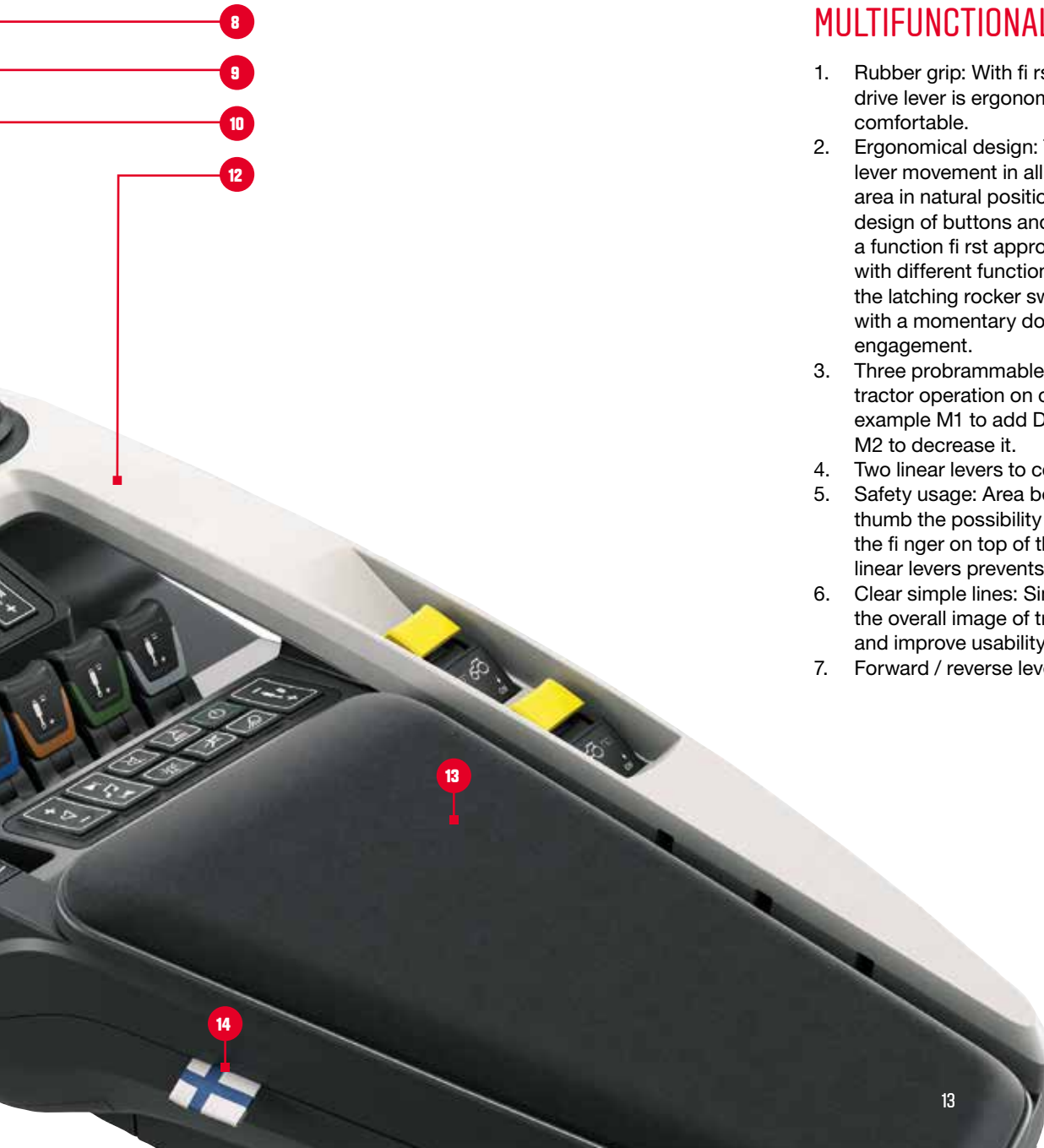
From any control you can control any hydraulic service including hydraulic valves (front and rear), linkages (front and rear) or front loader



Easy configuration of worklights from the terminal. Worklights on/off switch in the armrest with beacon on/off switch.



Profiles for operators and implements which can be easily changed from any screen menu. All the setting changes will be saved in the selected profile



MULTIFUNCTIONAL LEVER

1. Rubber grip: With first-class materials the drive lever is ergonomic, easy to use and comfortable.
2. Ergonomical design: The design allows for easy lever movement in all four directions. Button area in natural position for your thumb. The design of buttons and switches was done with a functional approach. Therefore buttons with different functions look different. Example: the latching rocker switch for the rear linkage with a momentary down function for fast soil engagement.
3. Three programmable memory buttons for any tractor operation (U-pilot). For example M1 to add Driving speed, cruise speed, M2 to decrease it.
4. Two linear levers to control hydraulics.
5. Safety usage: Area between buttons gives your thumb the possibility to rest without keeping the finger on top of the buttons. Humps around linear levers prevent error usage.
6. Clear simple lines: Simple and clear lines add to the overall image of tranquility and sturdiness, and improve usability.
7. Forward / reverse lever at the drive lever.

SCREEN

8. No additional screens needed – Auto-Guide and safety camera displays are integrated to the SmartTouch screen. No need for additional monitors to block your visibility.

JOYSTICK

9. Ergonomically positioned hydraulic joystick now includes 3rd control for hydraulics on top.

BUTTON & REAR LINKAGE AREA

10. Buttons: Concave and convex shape helps find frequently used buttons easily and quickly.
11. Rear linkage - The easy-to-use limiter enables even the smallest adjustments of the rear linkage.

DESIGN

12. Functional structure of the armrest provides good grip on rough terrain. All functions are easy to access due to logical layout and the armrest allows good support for the hand, reducing tensions and stress. Location of PTO switches minimizes unintentional usage.
13. Upholstery: Alcantara upholstery for less sweating. Storage space under the cover.
14. Designed in Finland.

SPECIALIZE IN ANYTHING. COMPROMISE IN NOTHING.



The workhorse for mixed farming

The new N Series is the most powerful 4-cylinder tractor in the industry, with a power boost providing up to 185 hp and 730 Nm torque. With up to 200l/min hydraulics you have enough power for your implements, with up to 78 kN lift capacity in the rear and an 890 mm lifting range. With its optimal wheel base and the perfect 40%–60% weight distribution you get a good grip on the ground and good balance for front loader work. You can also select telemetry and guidance options (up to cm accuracy) directly from the factory.

Great in grassland

This tractor has impressive agility in tight corners, with just a 4.5 m turning radius – even with a front loader and front linkage. You can enhance the agility further with Valtra's adjustable QuickSteer. There are plenty of options, such as an integrated front loader with a hydraulic assistant, a Skyview cab for excellent visibility, heavy duty axles, Sigma Power, up to 7 valves in the rear and 4 valves in front, 40/50 km/h options, and

trailer couplings that work like a precision watch. Front PTO and rear 3 speed PTO with a ground speed option provide unmatched power for your implements.

Contracting, multitasking, and more

There are 24 hours in a day, and a different job for each one. You can tailor the Valtra N Series exactly for your requirements, be it contracting, forestry, or municipal work. The Valtra Direct CVT transmission is at its best in multitasking and road transport, and gives precision for front loader work. Valtra cabin and front axle suspension offer you more comfort than any other brand. For tough conditions you can equip your working machine with a 165 liter steel tank, bottom protection and 55 cm ground clearance, designed for demanding tasks such as forestry. Valtra's unique TwinTrac reverse driving will make your working days more efficient and economical. And no matter what work you are doing, in Eco mode (in the N114e and N154e) you can reduce your fuel consumption by an additional 10%.

The N Series offers unmatched versatility, whether you are doing mixed farming, dairy farming, municipal work, or contracting. Just select the horsepower, transmission, hydraulics, and optional features that are ideal for you. AGCO Finance offers unmatched service, with payment plans matching your exact needs.



SIZE DOESN'T MATTER. PERFORMANCE DOES.

The N series tractor has the most powerful and responsive 4 cylinder engine on the market. The 4.9 liter engine provides from 115 hp up to 185 hp and up to 730 Nm of torque. AGCO Power has been the heart of every Valtra tractor for as long as we have been building tractors. Your next working machine has more than 60 years behind it and more than 10,000 hours ahead of it.



When you need an extra boost

Sigma Power delivers extra power for PTO work. It is especially useful when you are working with implements that require a lot of PTO power, such as chippers and power harrows. In heavy PTO use, the engine will automatically produce up to 10 hp more power.

The right choice, right from the start

We decided back in 2008 to rely on one technology – SCR Only. Today we are seeing a big difference compared to many of our competitors. SCR Only is a service-free system, with no clogging components or wearable parts. DOC and SCR catalytic converters clean the exhaust gas without regenerating or particle filters. Valtra has unmatched reliability in an easy-to-maintain package – this will lower your total cost of ownership for your tractor and keep you working day in, day out.

Slow down. Your machine will live longer

Valtra offers two EcoPower models that let you select the engine setting to lower fuel. Engine torque increases while the top revs and average piston speed are reduced by 20 percent. This not only reduces engine noise and vibration; it also means fuel savings of up to 10 percent! The reduced revs and piston speed reduce engine wear and help your tractor live longer.



EVERY LITRE YOU SAVE IS MONEY IN THE BANK.



You get exactly the power you need, when and where you need it. There is plenty of power for pulling and PTO, but it is only in use when you need it. Here are just a few examples of the Valtra power management solutions.

SAVING YOUR MONEY

- **Automatic slip regulator (ASR):** By optimizing the wheel slip and putting power effectively to the ground, the program works for safe and efficient traction.
- **Valtra Power Management:** The N174 with electronically controlled power management gives you an additional 10 hp for PTO and transport tasks when you need it. When using engine speed memory, the tractor automatically recalls the selected PTO speed.
- **High precision Common Rail injection:** The new up to 2000 bar system offers finer fuel spray and perfectly timed fuel injects that increase fuel efficiency.
- **Efficient turbo technology:** A single turbocharger with an electronically controlled bypass valve offers faster engine response, better low-rev torque and top notch reliability.
- **EcoPower mode:** Up to 10% savings in fuel consumption and a reduction in engine wear can be achieved with the fuel-consumption friendly N114 eco and N154 eco models.
- **EcoSpeed:** As the maximum speed of 40 km/h is achieved in EcoSpeed tractors at a low engine speed of just 1600 rpm, and as lots of driving is done at this speed, considerable advantages are created.
- **Low idling speed:** The 700 RPM idling speed compared to the competitors' 850 RPMs helps you save fuel and reduce noise while parked or attaching implements.
- **Cooling system:** The clever cooling package, roof air intake, electronic visco fan control and optimized heat removal all add up to lower fuel consumption. Every detail is right sized to ensure optimal performance in a compact tractor.



VALTRA POWER SOLUTION

Let us help you do more. Valtra Power Solution is a comprehensive package of pioneering solutions enabling decreased fuel consumption, reduced emissions and optimized driveline efficiency. On the engine side, AGCO Power has been able to cut Nox (Nitrogen Oxide) and PM (Particulate Matter) emissions by 80% compared to 1996 levels. Valtra is committed to continuous development in offering pioneering fuel and emission reducing solutions.



Less slip, more grip
The revolutionary new Automatic slip regulator automatically manages wheel slipping to improve the pulling grip while significantly improving fuel economy. This feature completes the 4WD and Differential lock automatics and the traditional AutoControl power slip control in Versu and Direct models.

SAVING YOUR TRACTOR

- **Powershift revolution:** Next generation transmission and engine management software always provide the most optimal torque for your work. The intelligent automatics make sure that you always have the power you need in the right gear to save fuel. With CVT and Powershift, it's easier than driving an automatic transmission car. Focus on your work while enjoying the best driving experience in the industry.
- **SCR Only:** A service-free solution that gives the best overall liquid economy, without Exhaust Gas Recirculation or any clogging components. Neither expensive Diesel Particulate Filters, nor Variable Geometry Turbos are needed.



UNBEATABLE RANGE OF CHOICE

Valtra N series offers more choices than anyone else – with the help of our experienced salesman your working machine can be tailored to match your exact needs. Valtra offers six power levels and five transmission and hydraulic combinations: Hitech, HiTech with HiTrol, Active, Versu and Direct. Your Valtra N Series HiTech and Active models can be equipped with a standard user interface or with the practical and convenient Valtra ARM.

HITECH

- 5PS, with open centre 73/90 litre hydraulics
- Mechanical hydraulic controls

HiTech is also available with a turbine clutch option, providing extra convenience and precision for front loader and municipality applications

ACTIVE

- 5PS, with load sensing hydraulics
- Mechanical hydraulic controls

Valtra Active is a revolutionary powershift technology with load sensing hydraulics at up to 200 l/minute, a hydraulic assistant and separate hydraulic and transmission oils.

In HiTech and Active the transmission control is robotized, so there are no mechanical gear levers. These tractors can be equipped with easy-to-use basic controls or with a control armrest that lets you operate all speeds with the small gear lever and the cruise control.

VERSU

- 5PS, with load sensing hydraulics
- Electrical hydraulic controls
- Valtra SmartTouch Arm with display
- Easy transmission and hydraulic settings

Valtra Versu is the king of the new generation powershift transmissions, with electronic hydraulic control, a hydraulic assistant, 115, 160 or 200 litre output, and separate hydraulic and transmission oils. It operates with the drive lever in automatic or manual mode. By choosing a Versu transmission, you get the ease of powershift and the flexibility of CVT in one package



DIRECT CVT

- CVT with load sensing hydraulics
- Electrical hydraulic controls
- Valtra SmartTouch Arm with display

This is the flagship of the range. The drive lever control allows you to adjust the acceleration and deceleration with your right hand only. The versatile velocity setups have been further developed. We even offer a manual transmission control, which is needed for some special crops.

Join the Powershift Revolution

Valtra Powershift is the smoothest transmission on four wheels. Take your foot off the clutch and you are automatically in control – with Valtra you can drive your powershift tractor like a CVT. In automatic modes you shift automatically based on your acceleration and torque requirements – and you always get the best fuel economy.

The 5 step Powershift transmission has four ranges and is available in HiTech, Active and Versu. With two optional creeper

ranges, you have 30 speeds in both directions. The new gear lever (HiTech, Active) or SmartTouch lever in Versu makes shifting precise and effortless. These models also have the Hill-hold feature, so you can get a smooth start with just the accelerator pedal, even uphill.

Valtra Active and Versu models have a revolutionary, patented hydraulic assistant, giving you more hydraulic output automatically, either stationary or when driving, with no effect on driving speed. No other powershift can do it!



WHY SETTLE FOR THE BEST WHEN YOU CAN HAVE MORE?

The Valtra Unlimited service creates unlimited possibilities. Get a unique exterior package with a special paint color, or choose the interior features such as leather and chrome. Select business applications, like a bottom grader, or special military features. Everything is installed at the factory and covered by the factory warranty.

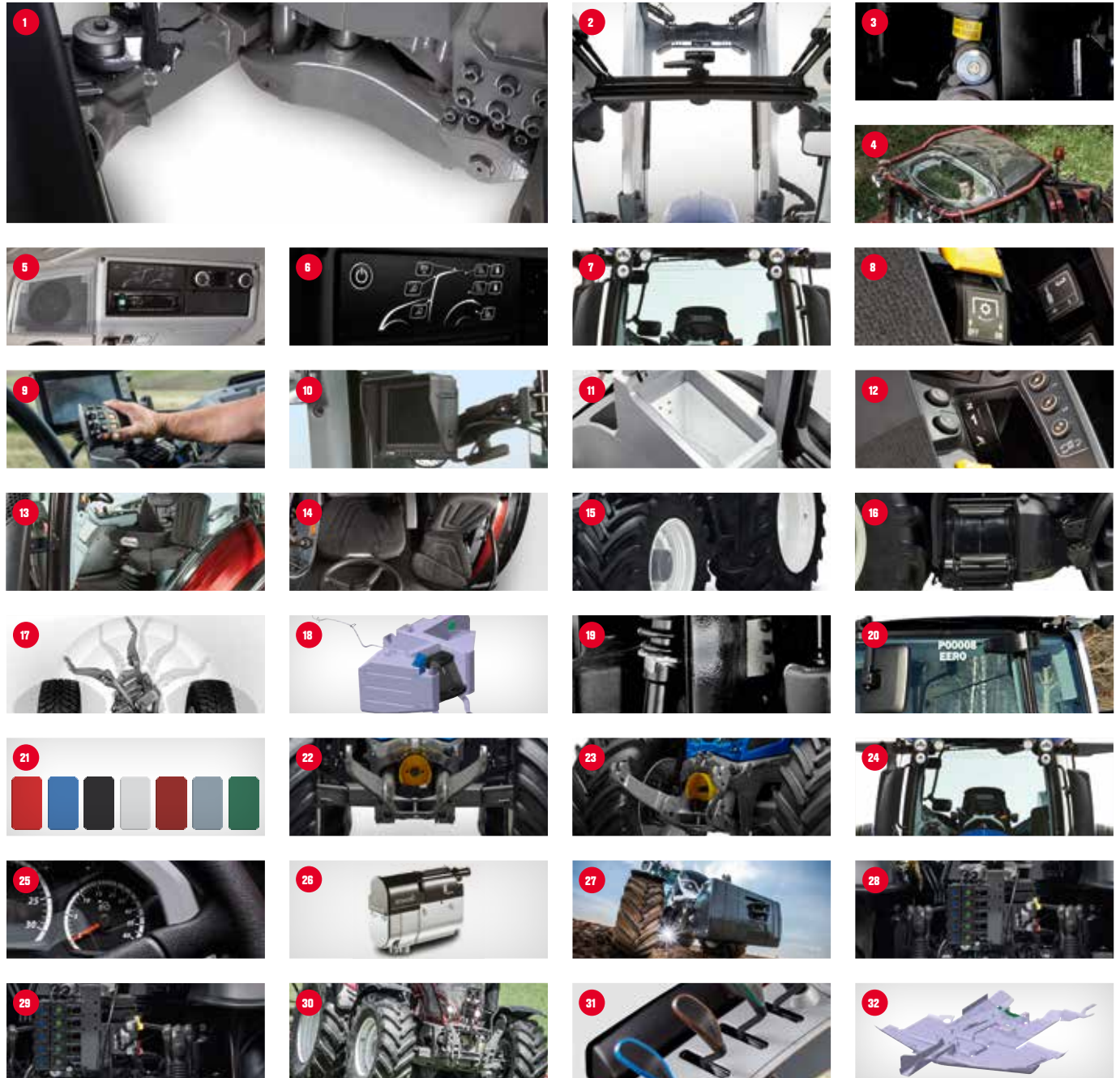
The sky's no limit!

N Series / 115 - 201 hp



EVERY FARMER IS DIFFERENT. SO IS EVERY N SERIES TRACTOR.

Valtra is famous for the A la Carte system. Tailor your tractor using the electronic ordering tool together with your dealer. This is how we ensure that you will get the working machine that matches your needs exactly.



1. **Hydraulic front axle suspension** / With 100 mm travel, superb oscillation and a 7,5 ton load capacity, the hydro pneumatic suspension offers excellent ride comfort for all tasks.
2. **Roof window** / The largest roof window in the market place gives clear visibility in front loader work. The window can be opened. Manual sun protection as standard. FOPS approved.
3. **AutoComfort** / Auto-levelling pneumatic cab suspension maximizes operating comfort by adapting the suspension according to the working environment.
4. **Skyview roof** / The new Skyview roof lets in as much sky as you like. It provides the best visibility in reverse direction. Comes as a standard with window wiper.
5. **Premium audio system** / The next generation 150 watt (25W+25W+100W) audio system offers superior sound, thanks to two high-quality integrated two way roof speakers especially customized for Valtra, a Bluetooth player, active subwoofer and amplifier.
6. **Premium working lights** / LED working lights turn the night into day. The package includes 2 front, 4 rear and 2+2 mid mounted LED working lights.
7. **Heated windshield** / The invisible heating wires effectively remove fog and frost from the windshield. This feature makes sure you have great visibility in winter and in summer.
8. **Sigma Power** / More power for PTO work
9. **TwinTrac** / Work in both driving directions efficiently – unique, only with Valtra. TwinTrac allows the operator to perform a wide range of applications more effectively. In addition, mowing in reverse puts significantly less strain on the operator's body and mind.
10. **Safety camera (1-2)** / For a good view of the hitch or implement or both. Two cameras are included. One fixed to the rear side cabin, another (unattached) with a 10 meter cable for you to install to an implement or somewhere else in the tractor. A display is also included.
11. **Cool box** / An integrated electric coolbox with a capacity of 8,4 litres making a 1,5 litre bottle fit easily. Located on the left side of the operator.
12. **U-Pilot** / Headland management program that can be recorded or manually edited. It allows the operator to concentrate on the implement and its operations instead of controlling the functions.
13. **Evolution seat** / Superior seating comfort with pneumatic suspension. The automatic level adjustment, adjustable damping, cooling and heating make sure that you feel comfortable even on the longest working days.
14. **Passenger seat** / Plenty of room for a co-driver. The passenger seat can be tilted down and used as a table.
15. **Tyre options** / A wide selection of tyres for different tasks and applications.
16. **Toolbox** / Keep you tools in a safe place. Space for a toolbox is located in the water sealed technical compartment under the right side steps
17. **Pivoting front linkage** / Valtra LH Link allows the front linkage to turn in the desired amount with the front wheels, making it easy to mow or sweep around corners without missing anything. The pivoting of the front linkage can be controlled either manually or automatically – for mowing tasks the automatic option is superior.
18. **Steel tank** / The factory-fitted tank has a capacity of 165 litres. It offers improved ground clearance, making the underside of the tractor flat. The tank is made of durable, high-quality sheet metal which protects the tractor against knocks on uneven terrain.
19. **Mechanical cab suspension** / The mechanical suspension enhances operating comfort. The suspension can be adjusted to match the weight in the cab.
20. **Customer name** / Your name decal on both sides of the cab.
21. **7 Standard colours** / Red, blue metallic, black metallic, white metallic, red metallic, silver metallic, green metallic.
22. **Front PTO** / Integrated front power take off with a 1000 rpm counter clockwise rotation.
23. **Front lift** / 4.7-tonne lift capacity
24. **270° wiper** / Good visibility 365 days a year. The 270° windshield wiper offers maximum visibility in difficult conditions. In heavy rain it wipes a narrower area to increase speed.
25. **50 km/h** / Up to 53 km/h with lower engine revs. In model N174, the HighSpeed version brings you close to 60 km/.
26. **Engine heater / Diesel heater** / The fuel operated engine heater ensures a warm cab even in the coldest morning. The heater can be operated with a mobile phone.
27. **Weights** / Front, rear, rim and ballast
28. **Valve packs** / Rear 6/4 and front 4
29. **Power Beyond**
30. **Front hydraulics**
31. **Hydraulic pump** / 73/90/115/160/200 l/min. A wide selection of high capacity hydraulic pumps guarantees that you'll get the right output for your work.
32. **Bottom protection** / For forest and arable work the 6mm bottom protection makes sure the tractor is protected. With the bottom protection, the excellent ground clearance remains unchanged.

OUR TECHNOLOGY, YOUR PRODUCTIVITY.

The N Series makes it easy to use the latest AGCO solutions to improve productivity and profitability. As part of its Fuse strategy, AGCO actively develops precision farming technologies. Fuse is an open strategy that can be applied to the machinery, products and applications of many manufacturers. This allows you to manage data from all the machinery and equipment on your farm as part of a single system. Fuse also makes the N Series compatible with future technologies.



DRIVE SMART WITH FUSE CONNECTED SERVICES

New Valtra Smart takes your driving style and cost-effectiveness to a new level. You can study your machine statistics and task-specific cost structures, but most importantly you get guidelines so you can optimize driving and get the most efficient work done with your tractor. We can help you to analyze your tractor data online and drive more economically.

Valtra Smart provides you with the best service support on the market. This tool is available in MyValtra. It will also help you select the optimal combination of horsepower, transmission and hydraulics for your work.

PRECISE AUTOMATIC STEERING

Auto-Guide is AGCO's automatic steering system. This advanced system is fully integrated into SmartTouch user interface with no need of separate terminals. It helps save time, fuel and material while reducing variations in performance among drivers. N series HiTech and Active can be completed with the well established Auto-Guide 3000 system.

FOR YOUR ENTIRE FARM AND ALL YOUR MACHINERY

A telemetry system is an essential part of AGCO's Fuse strategy. You can access key data about all the machinery on your farm, including engine data, location and operating hours, almost in real time, on your computer and smart phone.



GLOBAL NETWORK, LOCAL SERVICE.

It is very important for us to keep your tractor reliable and in good working condition year after year. As part of AGCO, the world's largest agricultural machinery manufacturer, we can offer services that help you manage the entire production chain and maximize your productivity.



YOUR OWN VALTRA DEALER

Your Valtra dealer represents the best tractor and implement expertise in your area. He understands the technical aspects of your tractor and the challenges you face. You can always turn to your dealer and receive the best service, whether you are interested in equipment, maintenance, spare parts, selling your old tractor or ordering a new one. Each Valtra dealer is an independent entrepreneur just like you who works continuously to develop both his own operations and yours. AGCO audits its dealer representatives each year to ensure that you get the best possible service.

VALTRA PREMIUMCARE

Valtra PremiumCare allows you to anticipate flexibly the maintenance costs of your investment so that you can better manage your costs. Regular maintenance and a full service history help maximize the resale value of your tractor. Valtra PremiumCare also lets you minimize lifecycle costs. With Valtra PremiumCare you can standardize your maintenance costs all the way up to 10,000 operating hours. In addition, Valtra PremiumCare includes a five-year or 6000-hour extended factory warranty. Valtra PremiumCare is available with all Valtra models.

EVERYTHING YOU NEED – ALWAYS AVAILABLE

Valtra's comprehensive spare parts service supplies the parts you need as fast as by the next morning. This helps you keep your tractor productive during the busy ploughing and harvesting seasons. The AGCO Parts label ensures that you are getting original Valtra spare parts that have been thoroughly inspected and tested.

PROFESSIONAL MAINTENANCE SERVICES

As a Valtra owner you have access to the Valtra service network. Our skilled technicians are experts in all Valtra tractor models, including the newest technologies and the latest features. Even if you do not opt for Valtra PremiumCare, regular service by Valtra-approved technicians ensures that your tractor will continue to perform well, season after season. In addition, the resale value of your tractor will remain high.

N Series / 115 - 201 hp

Ets GUERARD

VALTRA
Service

Ets GUERARD
11 Boulevard industriel
76270 Neufchâtel-en-Bray
Tél. 02 32 97 43 90

RENAULT

Traffic

BM-413-PG 76

TAILORING YOUR FINANCE NEED WITH AGCO FINANCE.

AGCO Finance is a fast and safe option for financing the purchase of your tractor. Financing is tailored individually, based on your cash flow and operations – tell us how much you can afford to pay on a monthly basis and we will tailor a flexible payment schedule according to your needs, taking seasonal variations into consideration. AGCO Finance also offers other financing services such as leasing, rental and insurance. Services vary between countries, so please check your nearest dealer for the available offering.



MY VALTRA

When you purchase a Valtra tractor, you become part of a global online community that we call MyValtra. Ask for advice, share experiences of working life, send photos and videos, and connect with other Valtra owners in over 50 countries.

www.myvaltra.com

VALTRA TEAM

Valtra Team is our customer magazine, published twice a year. Each issue contains useful information about the latest innovations and the most efficient working methods. You can also access the magazine's archives online and read articles dating back to 2000.

AGCO ACADEMY

Tractors and related technologies, especially precision farming technologies, are developing at a rapid pace. The Valtra Academy continuously trains Valtra dealers and service technicians. You will always receive first-class and up-to-date expertise from your Valtra dealer and service technicians.

VALTRA COLLECTION

The Valtra Collection offers high-quality clothing and accessories for work and leisure. The materials and details are carefully selected. For example, the latest collection of work clothing features light yet extremely durable materials. Style is always in season, as the clothing reflects Valtra's modern design language.

KEY ACCOUNT PROGRAMME

Some of the world's most successful professional farmers are feeding the world with AGCO equipment. Join us, and add your name to a growing group of dedicated, forward-thinking and profitable farmers. With your help, we can change the face of farming. Together, we can meet the challenges ahead and increase productivity in a sustainable, profitable way.

AGCO - LEADING THE WAY - FEARLESSLY

We are one of the world's most influential producers of farm machinery – a leader in product development, a leader in technology and a leader in customer service.

AGCO is the world's largest manufacturer focused purely on agriculture. Our high-tech solutions and vast experience of global agriculture mean AGCO is uniquely placed to increase your farm's productivity.

AGCO meets individual farming needs. From the most demanding challenges to everyday tasks, our multiple brands and customer-focused services enable us to give you exactly what you need, when you need it.

AGCO's global presence ensures that professional farmers worldwide have the tools they need to maximise their crop yield and meet growing demands.



ABOUT AGCO

AGCO (NYSE: AGCO) is a global leader in the design, manufacture and distribution of agricultural machinery. AGCO supports more productive farming through a full line of tractors, combines, hay tools, sprayers, forage equipment, grain storage and protein production systems, seeding and tillage implements and replacement parts. AGCO products are sold through five core machinery brands, Challenger®, Fendt®, GSI®, Massey Ferguson® and Valtra® and are distributed globally through approximately 3,100 independent dealers and distributors in more than 140 countries worldwide. Founded in 1990, AGCO is headquartered in Duluth, GA, USA. In 2014, AGCO had net sales of \$9.7 billion. For more information, visit <http://www.AGCOcorp.com>.

TECHNICAL SPECIFICATIONS

TRACTOR MODEL	N104	N114E	N124	N134	N154E	N174
DIMENSIONS						
with tyres	460/85R38		520/85R38			
Wheel base [mm]			2665			
Lenght [mm]			4656			
Height low cab position [mm]	2850	2900			--	
Height suspended/high cab position[m]	2910			2960		
Height SKYVIEW cab [mm, any position]			+ 64			
Turning radius [m]			4.5			
Fuel capacity STD [l]			235			
Fuel capacity [l] large tank/forest tank			315/160			
AdBlue capacity STD / forest tank [l]			45 (25)			
Ground clearance MID [mm]	505			550		
Weight (front axle suspension, full tanks) [kg]*	5350	6100			6300*	
Weight distribution F/R [ca. %]			40/60			
Max front axle weight [kg]			4000**			5000
Max rear axle weight [kg]	6000			8000		
Gross vehicle weight [kg]	8000	10000			11000	

* Hitech (Active, Versu, Direct: 6500)

** with suspension or HD axle 5000

TRACTOR MODEL	N104	N114E		N124	N134	N154E		N174
ENGINE	std mode		eco mode		std mode		eco mode	
Engine, Agco Power			44 AWF				49 AWF	
No of cylinders /Capacity [l]			4/4.4				4/4.9	
Emission control	Tier 4 Final / Stage 4 - "SCR only" system with DOC and SCR Catalysts							
Standard Max Power, [kW]	77	85	85	92	99	114	114	121
Standard Max Power, [hp]	105	115	115	125	135	155	155	165
Boost Max Power, [kW]	85	92	92	99	107	121	121	136
Boost Max Power, [hp]	115	125	125	135	145	165	165	201
at engine speed [r/min]	1900	1900	1750	1900	2100	2100	1900	2100
Nominal engine speed [r/min]	2100	2100	1900	2100	2100	2100	1900	2100
Standard Max Torque, [Nm]	470	500	540	550	570	610	660	680
Boost Max Torque, [Nm]	510	540	570	580	620	660	700	800
at engine revs	1500	1500	1250	1500	1500	1500	1250	1500
TRANSMISSION OPTIONS								
HiTech	X	X	X	X	X	X	X	X
HitTech with HiTrol turbine clutch	X	X	X	X		--		
Active			--		X	X	X	X
Versu			--		X	X	X	X
Direct			--		X	X	X	X
POWER LIFT								
Lift capacity rear, max [kN]	63	63(78 opt)				78		
Lifting range, max [mm]				862				
Optional front lift capacity [kN]				47				
Turning radius (600/65R28, track 1960mm) [m]				4.5				

TRANSMISSION	HITECH	HITECH & HITROL	ACTIVE	VERSU	DIRECT
ENGINE					
5 step Powershift	X	X	X	X	--
Creeper	Option	Option	Standard	Standard	--
CVT			--		X
Speed range			0.6-43		0-43
Alternative speed range 0.7-53 0-53			0.7-53*)		0-53*)
Group gear (work areas)			A,B,C,D		
Ranges automated			C-D		
Number of speeds with creeper			30+30R		CVT
Number of creeper gears			10+10R		CVT
Brakes			multi-disc/plates oil cooled wet brakes with hydraulic boost		
Type of main clutch			wet multi-disc		
Front axle suspension type			hydropneumatic		
HYDRAULICS					
Hydraulic system	open centre		load sensing		
Pump capacity	73(90)		115 (160)/(200)		
Oil available for implement	40		47		
Mechanical valves rear	up to 4		--		
Power Beyond	--		option		
Electronic valves rear	--		up to 5		
ON/OFF valve rear	--		option		1 std, (2 option)
Electronic valves front			2, 3 or 4		
POWER TAKE OFF					
540 / 1000			Standard		
540/540E/1000			Option		
540E/1000/1000E			Option		
Ground speed PTO			Option		
Front PTO 1000 Option			Option		

* Model N104 only 0.6-43, on model N174 also high speed option upto 57 km/h

CAB	STD	SKYVIEW
Operator's seat swivel angle 180°		Standard
Co-drivers seat with safety belt		Option
Noise level [dB] 70		Standard
No of doors		1 or 2
No of windows	4 or 5	5 or 6
Roof window front	Option	--
Roof window rear		Standard
Window area with roof window [m ²]	6.22	6,53
Windscreen wiper work angle	STD 180°, Optional 270°	
Controls	Standard or Armrest (HiTech, Active) and SmartTouch in Versu and Direct	
Air conditioning and heater in the roof	Option	Standard
Extra heater for footwell	Option	Option
Automatic climate control with 2 heaters	Option	--
Cool Box		Option
Mechanical cab suspension		Option
AutoComfort semi-active air suspension		Option
TwinTrack reverse drive		Option
QuickSteer		Option
AutoGuide (Sub-metre or cm accuracy)	Option	--
2 Safety cameras		Option

**VALTRA N SERIES:
SMART IN SIZE.
PERFECT IN PERFORMANCE.**

VALTRA



Valtra Inc.
Valmetinkatu 2
FI-44200 Suolahti

Valtra® is a worldwide brand of AGCO.

Tel. +358 (0)2045 501
Fax +358 (0)2045 50608

www.valtra.com
www.myvaltra.com
www.facebook.com/ValtraGlobal
www.youtube.com/valtravideos

**YOUR
WORKING
MACHINE**

The tractors that appear in this brochure may be equipped with special options. Changes possible - all rights reserved.