



# 2022 MOWERS







## Q3<sup>®</sup> CUTTER BAR: QUALITY TO COUNT ON

Vermeer offers two different types of cutter bars on hay mowers: standard and Q3<sup>®</sup> cutter bars. Both come with a Quick-Clip<sup>®</sup> blade retention system and a 3-year warranty; however, there are differences worth noting.

The Q3 cutter bar, available on Vermeer mower conditioners and select trailed mowers, provides high hay cutting performance in the field with low horsepower requirements. But what features set the Q3 cutter bar apart?

INCLUDES Q3 CUTTER BAR	TYPE OF MOWER
MC2800	Mower conditioner
MC3300	Mower conditioner
MC3700	Mower conditioner
TM1210	Trailed mower
TM1410	Trailed mower

## THE 3 QS BEHIND THE Q3 CUTTER BAR:

# Q3

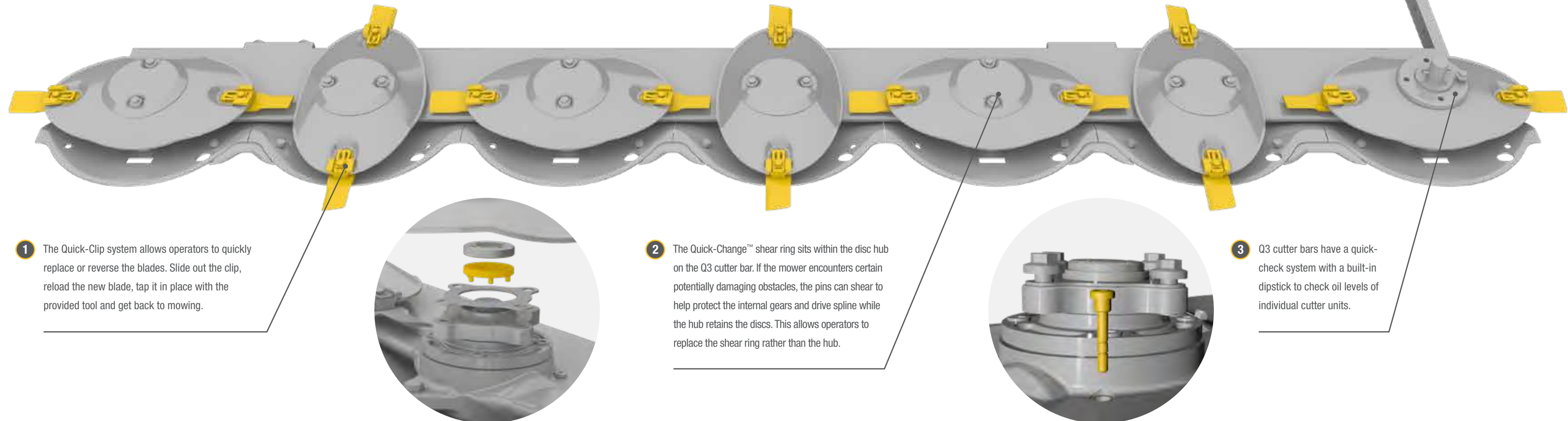
**Quick-Clip<sup>®</sup> blade retention system\***

**Quick-Change<sup>™</sup> shear ring**

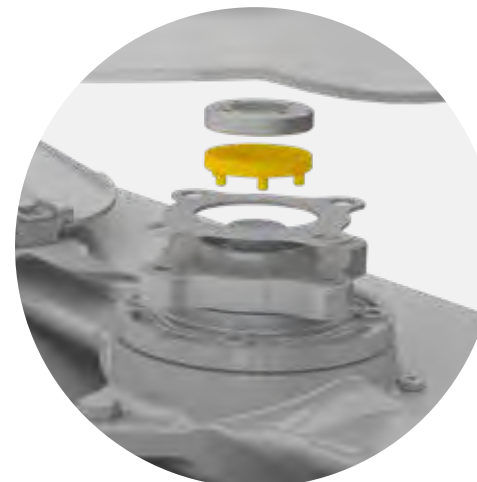
**Quick-check oil**

## TABLE OF CONTENTS:

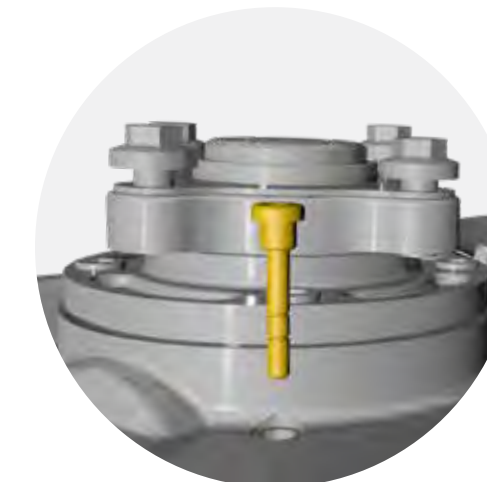
TM1210 and TM1410 trailed mowers	pg. 4 - 5
TM1200 trailed mower	pg. 6
TM850 trailed mower	pg. 7
TM610, TM710 and TM810 trailed mowers	pg. 8 - 9
M5050, M6050, M7050 and M8050 disc mowers	pg. 10 - 11
MC2800, MC3300 and MC3700 mower conditioners	pg. 12 - 13
Product specifications	pg. 14 - 19



**1** The Quick-Clip system allows operators to quickly replace or reverse the blades. Slide out the clip, reload the new blade, tap it in place with the provided tool and get back to mowing.



**2** The Quick-Change<sup>™</sup> shear ring sits within the disc hub on the Q3 cutter bar. If the mower encounters certain potentially damaging obstacles, the pins can shear to help protect the internal gears and drive spline while the hub retains the discs. This allows operators to replace the shear ring rather than the hub.



**3** Q3 cutter bars have a quick-check system with a built-in dipstick to check oil levels of individual cutter units.





# TM1210 AND TM1410 TRAILED MOWERS

Vermeer TM1210 and TM1410 trailed mowers are ideal for those who want to cut more hay in less time with convenient features that can help take the stress out of operating, transporting and maintaining a large trailed mower.

1 Optional large flotation tires are available on both the TM1210 and TM1410. Flotation tires can help limit compaction in the field and allow operators to mow in wetter-than-normal conditions.

2 The TM1210 and TM1410 come with a split Q3® cutter bar. The two independent cutter bar units work with the suspension system, allowing the mower to follow uneven ground contour. Each cutter bar can flex independently to pivot up and over hidden obstacles.

3 These machines offer big-time productivity, big-time convenience and a narrow 9.1-ft (2.7-m) transport width with standard tires or 9.8-ft (3-m) transport width with optional flotation tires.

4 The TM1210 offers cutting widths of up to 17.7 ft (5.4 m), and the TM1410 offers cutting widths of up to 20.8 ft (6.3 m).

5 A nitrogen-charged accumulator suspension system makes it efficient to adjust for various crops and conditions, and provides ground-following cutter bar balance and a consistent pitch. The system allows operators to charge to an established setting every time.

6 A patented 2-point Quick Hitch hookup is designed to allow one person to hook up the mower. It also provides high ground clearance to help avoid obstructions while in the field.



This image is for illustration purposes only. Curtains and shielding have been removed. Never operate equipment without the appropriate shielding in place.



**3-YEAR**  
CUTTER BAR WARRANTY

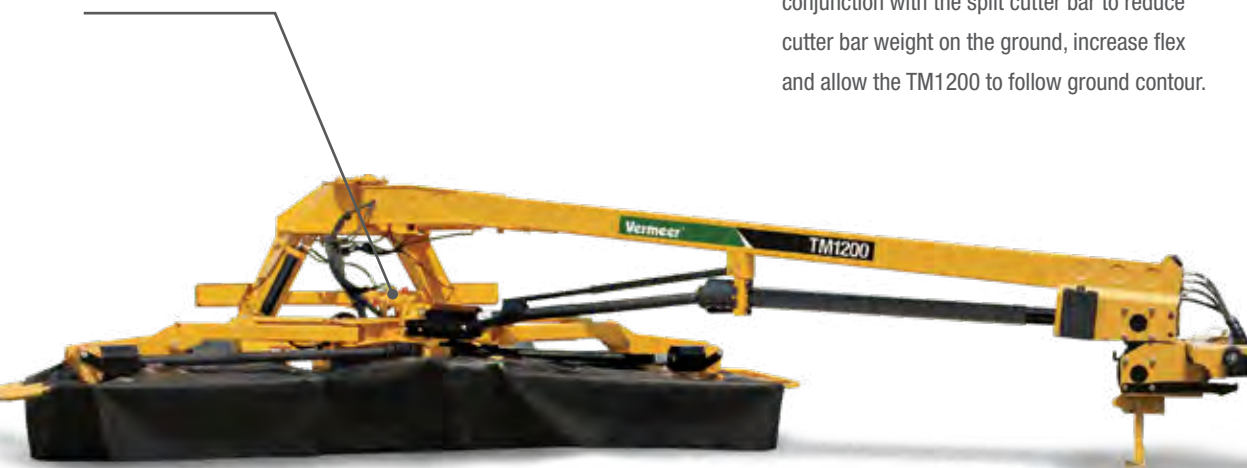


## TM1200 TRAILED MOWER

The TM1200 trailed mower delivers the convenience and simplicity of a trailed mower while offering a cutting width of 15.5 ft (4.7 m) with a minimal horsepower requirement of 85 hp (63 kW).

- 1 The hydraulic cutter-bar-pitch control sets the cutting height to minimize streaking and allows operators to adjust for different crops and conditions — no tools required.

- 2 The hydraulic suspension system works in conjunction with the split cutter bar to reduce cutter bar weight on the ground, increase flex and allow the TM1200 to follow ground contour.



- 3 The TM1200 quickly folds down to 8.5 ft (2.6 m) to efficiently maneuver through gates when traveling from field to field, while the 2-point hookup accommodates both category II and III N hitches.



This image is for illustration purposes only. Curtains and shielding have been removed. Never operate equipment without the appropriate shielding in place.



## TM850 TRAILED MOWER

The TM850 trailed mower has a cutting width of 10.5 ft (2.3 m) and is considered a heavyweight in its class. This one's built to handle a regular diet of high-volume material while needing a tractor with a low horsepower requirement of 60 hp (44.7 kW).

- 1 The unique, patented self-aligning driveline provides smooth operating in all tongue positions and enables the TM850 to maneuver around obstacles in the field.



- 2 The flotation and a nitrogen-charged hydraulic suspension system maximize flex and allow the TM850 to efficiently follow the ground contour — even pivot up and over hidden obstacles while maintaining control. No tools are required for setting suspension or adjusting pitch control.



This image is for illustration purposes only. Curtains and shielding have been removed. Never operate equipment without the appropriate shielding in place.

**3-YEAR**  
CUTTER BAR WARRANTY





**3-YEAR**  
CUTTER BAR WARRANTY

**Quick-Clip**  
BLADE RETENTION SYSTEM

## TM610, TM710 AND TM810 TRAILED MOWERS

TM610, TM710 and TM810 trailed mowers offer simplicity. The hookup procedure is straightforward — toolless adjustments allow operators to set the suspension between fields, and the Quick-Clip® blade retention system lives up to its name. Horsepower requirements of 50 hp (37.3 kW) for the TM610, for example, are an average of 20% lower than comparable 3-point disc mowers.

SPECIFICATION	CUTTING WIDTH
TM610 trailed mower	8.1 ft (2.5 m)
TM710 trailed mower	9.2 ft (2.8 m)
TM810 trailed mower	10.5 ft (3.2 m)



**1** An exclusive rubber torsion suspension design absorbs shock loads and high impacts by reducing cutter bar weight on the ground, allowing it to float and swing up and over field obstacles.

**2** The swath width is 80% of the cutter bar width for quick and even dry down, depending on crop type and conditions.

**4** A side-pull rotary disc mower design with hydraulic swing cylinder makes transport convenient from field to field.

**5** Free motion hub provides convenient PTO attachment.

**3** Sleek, low-profile cutter units and wide skid shoes provide a clean, close cut. Thick, .2-in (5-mm) heat-treated blades help provide shatter resistance and long life. Segmented, hex-shaped driveshafts can help with ease of maintenance.

A friction-style clutch is placed close to the very thing it's designed to protect — the cutter bar.







# M5050, M6050, M7050 AND M8050 DISC MOWERS

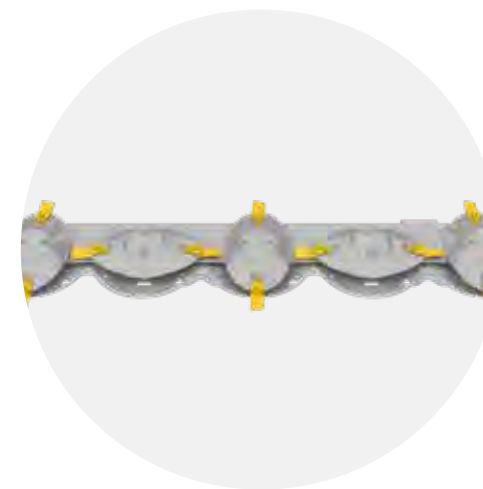
Some say disc mowers are all the same, but it's the little things that make the difference and help eliminate major pain points. Built in Pella, Iowa, M5050, M6050, M7050 and M8050 disc mowers feature a Quick Hitch hookup. This one-person job only takes a few steps — then off to the field you go.

SPECIFICATION	PTO	CUTTING WIDTH
M5050 disc mower	45 hp (33.6 kW)	6.8 ft (2.1 m)
M6050 disc mower	60 hp (44.7 kW)	7.8 ft (2.4 m)
M7050 disc mower	70 hp (52 kW)	9.2 ft (2.8 m)
M8050 disc mower	80 hp (60 kW)	10.5 ft (3.2 m)

**1** Hooking up a 3-point disc mower isn't the tedious chore it used to be. The Quick Hitch hookup is a one-person hookup: Back up the tractor, hook up the disc mower with a Quick Hitch and you're ready to go.

**2** The cutter bar is the backbone of 50-series disc mowers. A tapered, low-profile cutter bar delivers a close, clean cut, which minimizes streaking and helps improve performance across a variety of crops.

Self-contained cutter units come prepared with their own set of gears, bearings and lubricant to help extend operating life. Even at increased working angles, grease continues to lubricate the gears and won't flow to the other side of the bar. Plus, it's backed by the Vermeer 3-year cutter bar warranty.



**3** Maintenance is made convenient with the Quick-Clip® blade retention system, which lets operators change and turn blades in seconds.







# MC2800, MC3300 AND MC3700 MOWER CONDITIONERS

Equipped with the Q3® cutter bar, Vermeer MC2800, MC3300 and MC3700 mower conditioners provide optimum performance with reduced horsepower requirements. With the modular disc design and unique cutter bar accessibility, maintenance and repair on these mower conditioners are user friendly.

SPECIFICATION	CUTTING WIDTH
MC2800 mower conditioner	9.1 ft (2.8 m)
MC3300 mower conditioner	10.5 ft (3.3 m)
MC3700 mower conditioner	12 ft (3.7 m)

1 With two conditioner options, operators can decide what best fits your crop. Steel roller conditioners feature an aggressive profile that can break down tough crops but be adjusted for gentler conditioning of alfalfa crops. Two rubber rollers intermesh to crimp stems, producing well-conditioned forage.



2 The modular, shaft-driven Q3 cutter bar helps maximize productivity by making the mower fuel efficient with minimal gear-to-gear interface, ultimately requiring less horsepower than gear-bed-style cutter bars. Key features include the Quick-Clip® blade retention system, which allows operators to change blades in matter of seconds, and the Quick-Change™ shear ring, which allows operators to replace the ring rather than the hub when encountering a damaging obstacle.

3 The drawbar swivel hitch has the same maneuverability as the 2-point swivel hitch and the flexibility of 540-rpm or 1,000-rpm PTO input. With its balanced pivoting drawbar connection and a hitch-pin drop mechanism, hitching up can be a hassle-free, one-person job. The drawbar swivel hitch remains on the mower itself — no bolt-on drawbar attachments mean no more lost attachments and no more switching attachments every time operators need to pull a different implement.



4 The nitrogen-charged accumulator suspension system provides consistent weight on the cutter bar throughout the full range of motion, helping reduce ground contact and provide a clean cut. For varying field conditions, suspension adjustments can be made quickly and without the tools, reducing stress on the header and framework.

SPECIFICATION	TM1210 TRAILED MOWER	TM1410 TRAILED MOWER
<b>DIMENSIONS AND WEIGHTS</b>		
Transport height	76 in (193 cm)	76 in (193 cm)
Transport width — standard	9.1 ft (2.8 m)	9.1 ft (2.8 m)
Transport width with flotation tires	9.8 ft (3 m)	9.8 ft (3 m)
Transport length	25.2 ft (7.7 m)	25.2 ft (7.7 m)
Cutting width	17.7 ft (5.4 m)	20.8 ft (6.3 m)
Swath width	15 ft (4.6 m)	17.5 ft (5.3 m)
Working height	76 in (193 cm)	76 in (193 cm)
Working width	23.9 ft (7.3 m)	27.1 ft (8.3 m)
Working length	19.8 ft (6 m)	19.8 ft (6 m)
Total weight	7,180 lb (3,257 kg)	7,580 lb (3,438 kg)
Tongue weight	1,820 lb (825.5 kg)	1,875 lb (850 kg)
Suspension	Hydraulic	Hydraulic
Torque protection	Driveline: friction disc clutch	Driveline: friction disc clutch
Tires	Standard: 31 x 13.5-15 Optional: 480/45 x 7 flotation tire	Standard: 31 x 13.5-15 Optional: 480/45 x 17 flotation tire
<b>TRACTOR REQUIREMENTS</b>		
Tongue/hitch	2-point Quick Hitch with swivel gearbox, category II or III N	2-point Quick Hitch with swivel gearbox, category II or III N
Drive PTO	540 rpm or 1,000 rpm	1,000 rpm
PTO horsepower recommended	95 hp (71 kW)	105 hp (78 kW)
Hydraulic type	3 double acting (2 double acting with optional kit)	3 double acting (2 double acting with optional kit)
Hydraulic pressure	1,850 psi (127.6 bar)	1,850 psi (127.6 bar)
Hydraulic flow rate	6 gpm (22.7 L/min)	6 gpm (22.7 L/min)
<b>CUTTER BAR</b>		
Cutter bar type	Q3® cutter bar	Q3® cutter bar
Cut height	1 in - 3 in (2.5 cm - 7.6 cm)	1 in - 3 in (2.5 cm - 7.6 cm)
Number of discs	12	14
Disc diameter	23 in (58.4 cm)	23 in (58.4 cm)
Disc speed	2,690 rpm	2,690 rpm
Number of blades	24	28
Angle adjustment	Hydraulic pitch control	Hydraulic pitch control
Quick-Clip® blade retention system	Standard	Standard
Quick-Change™ shear ring	Standard	Standard
Curtain material	1,400-g/m <sup>2</sup> polyester woven material with flexible PVC covering	1,400-g/m <sup>2</sup> polyester woven material with flexible PVC covering
3-year limited cutter bar warranty	Standard	Standard
<b>FEATURES</b>		
Optional swath formation	Optional swathwheel	Optional swathwheel
Skid shoes	Standard modular independent skid shoes; optional topping wear skids	Standard modular independent skid shoes; optional topping wear skids
Highway lights	Standard	Standard

SPECIFICATION	TM1200 TRAILED MOWER	TM850 TRAILED MOWER
<b>DIMENSIONS AND WEIGHTS</b>		
Transport height	78 in (198.1 cm)	61 in (154.9 cm)
Transport width — standard	8.5 ft (2.6 m)	10.1 ft (3.1 m)
Transport width with flotation tires	NA	NA
Transport length	22 ft (6.7 m)	13.8 ft (4.2 m)
Cutting width	15.5 ft (4.7 m)	10.5 ft (3.2 m)
Swath width	14 ft (4.3 m)	9 ft (2.7 m)
Working height	78 in (198.1 cm)	61 in (154.9 cm)
Working width	22 ft (6.7 m)	15.8 ft (4.8 m)
Working length	18 ft (5.5 m)	13.3 ft (4 m)
Total weight	6,250 lb (2,835 kg)	2,420 lb (1,097.7 kg)
Tongue weight	1,580 lb (716.7 kg)	700 lb (317.5 kg)
Suspension	Hydraulic	Hydraulic
Torque protection	Driveline: friction disc clutch	Driveline: friction disc clutch
Tires	31 x 13.5-15	11L-15
<b>TRACTOR REQUIREMENTS</b>		
Tongue/hitch	2-point hitch with swivel gearbox, category II or III N	Drawbar
Drive PTO	540 rpm or 1,000 rpm	540 rpm
PTO horsepower recommended	85 hp (63 kW)	60 hp (44.7 kW)
Hydraulic type	2 double acting	2 double acting
Hydraulic pressure	1,500 psi (103.4 bar)	2,000 psi (137.9 bar)
Hydraulic flow rate	6 gpm (22.7 L/min)	6 gpm (22.7 L/min)
<b>CUTTER BAR</b>		
Cutter bar type	Standard	Standard
Cut height	1.3 in - 3 in (3.2 cm - 7.6 cm)	1.3 in - 3 in (3.2 cm - 7.6 cm)
Number of discs	12	8
Disc diameter	19.7 in (50 cm)	19.7 in (50 cm)
Disc speed	2,950 rpm	2,965 rpm
Number of blades	24	16
Angle adjustment	Hydraulic pitch control	Hydraulic pitch control
Quick-Clip® blade retention system	Standard	Standard
Curtain material	1,400-g/m <sup>2</sup> polyester woven material with flexible PVC covering	1,400-g/m <sup>2</sup> polyester woven material with flexible PVC covering
3-year limited cutter bar warranty	Standard	Standard
<b>FEATURES</b>		
Optional swath formation	Optional swathwheel	Optional swathwheel
Skid shoes	Standard modular independent skid shoes; optional topping wear skids	Standard modular independent skid shoes; optional topping wear skids
Highway lights	Standard	Standard



SPECIFICATION	TM610 TRAILED MOWER	TM710 TRAILED MOWER	TM810 TRAILED MOWER
<b>DIMENSIONS AND WEIGHTS</b>			
Transport height	46 in (116.8 cm)	46 in (116.8 cm)	46 in (116.8 cm)
Transport width — standard	8.3 ft (2.5 m)	9.4 ft (2.9 m)	10.8 ft (3.3 m)
Transport length	15.3 ft (4.7 m)	15.3 ft (4.7 m)	15.3 ft (4.7 m)
Cutting width	8.1 ft (2.5 m)	9.2 ft (2.8 m)	10.5 ft (3.2 m)
Swath width	5.2 ft (1.6 m)	6.3 ft (1.9 m)	7.2 ft (2.2 m)
Working height	46 in (116.8 cm)	46 in (116.8 cm)	46 in (116.8 cm)
Working width	12.4 ft (3.8 m)	13.6 ft (4.1 m)	14.9 ft (4.5 m)
Working length	14.3 ft (4.3 m)	14.3 ft (4.3 m)	14.3 ft (4.3 m)
Total weight	2,100 lb (952.5 kg)	2,200 lb (997.9 kg)	2,300 lb (1,043.3 kg)
Tongue weight	600 lb (272.2 kg)	630 lb (285.8 kg)	660 lb (299.4 kg)
Suspension	Rubber torsion	Rubber torsion	Rubber torsion
Torque protection	Driveline: friction disc clutch	Driveline: friction disc clutch	Driveline: friction disc clutch
Tires	27 x 9.5-15	27 x 9.5-15	27 x 9.5-15
<b>TRACTOR REQUIREMENTS</b>			
Tongue/hitch	Drawbar	Drawbar	Drawbar
Drive PTO	540 rpm	540 rpm	540 rpm
PTO horsepower recommended	50 hp (37.3 kW)	55 hp (41 kW)	60 hp (44.7 kW)
Hydraulic type	2 double acting (1 double acting with optional kit)	2 double acting (1 double acting with optional kit)	2 double acting (1 double acting with optional kit)
Hydraulic pressure	1,250 psi (86.2 bar)	1,250 psi (86.2 bar)	1,250 psi (86.2 bar)
Hydraulic flow rate	6 gpm (22.7 L/min)	6 gpm (22.7 L/min)	6 gpm (22.7 L/min)
<b>CUTTER BAR</b>			
Cutter bar type	Standard	Standard	Standard
Cut height	1.3 in - 3 in (3.2 cm - 7.6 cm)	1.3 in - 3 in (3.2 cm - 7.6 cm)	1.3 in - 3 in (3.2 cm - 7.6 cm)
Number of discs	6	7	8
Disc diameter	19.7 in (50 cm)	19.7 in (50 cm)	19.7 in (50 cm)
Disc speed	2,797 rpm	2,797 rpm	2,797 rpm
Number of blades	12	14	16
Angle adjustment	Manual turnbuckle	Manual turnbuckle	Manual turnbuckle
Quick-Clip® blade retention system	Standard	Standard	Standard
Curtain material	1-ply 1/8-in rubber	1-ply 1/8-in rubber	1-ply 1/8-in rubber
3-year limited cutter bar warranty	Standard	Standard	Standard
<b>FEATURES</b>			
Optional swath formation	Optional swathboard	Optional swathboard	Optional swathboard
Skid shoes	Standard modular independent skid shoes; optional topping wear skids	Standard modular independent skid shoes; optional topping wear skids	Standard modular independent skid shoes; optional topping wear skids

SPECIFICATION	M5050 DISC MOWER	M6050 DISC MOWER	M7050 DISC MOWER	M8050 DISC MOWER
<b>DIMENSIONS AND WEIGHTS</b>				
Transport width — standard	7.8 ft (2.4 m)	7.8 ft (2.4 m)	7.8 ft (2.4 m)	7.8 ft (2.4 m)
Transport length	6.5 ft (2 m)	6.5 ft (2 m)	6.5 ft (2 m)	6.5 ft (2 m)
Transport height	9.5 ft (2.9 m)	10.5 ft (3.2 m)	11.9 ft (3.6 m)	13 ft (4 m)
Cutting width	6.8 ft (2.1 m)	7.8 ft (2.4 m)	9.2 ft (2.8 m)	10.5 ft (3.2 m)
Swath width	4.6 ft (1.4 m)	6.3 ft (1.9 m)	7.1 ft (2.2 m)	8.8 ft (2.7 m)
Working width	7.9 ft (2.4 m)	9 ft (2.7 m)	10.4 ft (3.2 m)	11.5 ft (3.5 m)
Working length	6.5 ft (2 m)	6.5 ft (2 m)	6.5 ft (2 m)	6.5 ft (2 m)
Total weight	1,135 lb (514.8 kg)	1,215 lb (551 kg)	1,291 lb (585.6 kg)	1,380 lb (626 kg)
Torque protection	Driveline: V-belt	Driveline: V-belt	Driveline: V-belt	Driveline: V-belt
<b>TRACTOR REQUIREMENTS</b>				
Tongue/hitch	3-point Quick Hitch, category II	3-point Quick Hitch, category II	3-point Quick Hitch, category II	3-point Quick Hitch, category II
Drive PTO	540 rpm	540 rpm	540 rpm	540 rpm
PTO horsepower recommended	45 hp (33.6 kW)	60 hp (44.7 kW)	70 hp (52.2 kW)	80 hp (59.7 kW)
Hydraulic type	1 auxiliary remote, single acting	1 auxiliary remote, single acting	1 auxiliary remote, single acting	1 auxiliary remote, single acting
Hydraulic pressure	1,700 psi (117.2 bar)	1,700 psi (117.2 bar)	1,700 psi (117.2 bar)	1,700 psi (117.2 bar)
Hydraulic flow rate	6 gpm (22.7 L/min)	6 gpm (22.7 L/min)	6 gpm (22.7 L/min)	6 gpm (22.7 L/min)
<b>CUTTER BAR</b>				
Cutter bar type	Standard	Standard	Standard	Standard
Cut height	1 in - 3.9 in (2.5 cm - 9.9 cm)	1 in - 3.9 in (2.5 cm - 9.9 cm)	1.3 in - 3.9 in (3.2 cm - 9.9 cm)	1.3 in - 3.9 in (3.2 cm - 9.9 cm)
Number of discs	5	6	7	8
Disc diameter	19.7 in (50 cm)	19.7 in (50 cm)	19.7 in (50 cm)	19.7 in (50 cm)
Disc speed	2,850 rpm	2,850 rpm	2,850 rpm	2,850 rpm
Number of blades	10	12	14	16
Angle adjustment	Top link on 3-point	Top link on 3-point	Top link on 3-point	Top link on 3-point
Quick-Clip® blade retention system	Standard	Standard	Standard	Standard
Curtain material	1,400-g/m <sup>2</sup> polyester woven material with flexible PVC covering	1,400-g/m <sup>2</sup> polyester woven material with flexible PVC covering	1,400-g/m <sup>2</sup> polyester woven material with flexible PVC covering	1,400-g/m <sup>2</sup> polyester woven material with flexible PVC covering
3-year limited cutter bar warranty	Standard	Standard	Standard	Standard
<b>FEATURES</b>				
Optional swath formation	Optional crop divider	Optional crop divider	Optional crop divider	Optional crop divider
Skid shoes	Optional topping skid shoes; optional wear skids	Optional topping skid shoes; optional wear skids	Optional topping skid shoes; optional wear skids	Optional topping skid shoes; optional wear skids



SPECIFICATION	MC2800 MOWER CONDITIONER	MC3300 MOWER CONDITIONER	MC3700 MOWER CONDITIONER
<b>DIMENSIONS AND WEIGHTS</b>			
Transport height	73 in (185.4 cm)	73 in (185.4 cm)	73 in (185.4 cm)
Transport width — ends up	8.6 ft (2.6 m)	9.8 ft (3 m)	11.6 ft (3.5 m)
Transport width — ends down	11.4 ft (3.5 m)	12.8 ft (3.9 m)	14.1 ft (4.3 m)
Transport length	18.1 ft (5.5 m)	19.8 ft (6 m)	27.5 ft (8.4 m)
Cutting width	9.1 ft (2.8 m)	10.5 ft (3.3 m)	12 ft (3.7 m)
Total weight — roller conditioner	4,150 lb (1,882.4 kg)	4,675 lb (2,120.5 kg)	5,300 lb (2,404 kg)
Total weight — tine conditioner	3,950 lb (1,791.7 kg)	4,200 lb (1,905.1 kg)	5,000 lb (2,268 kg)
Suspension	Hydraulic nitrogen-charged accumulator suspension system	Hydraulic nitrogen-charged accumulator suspension system	Hydraulic nitrogen-charged accumulator suspension system
Torque protection	Friction over-running clutch	Friction over-running clutch	Friction over-running clutch
Tires	11L-15	12.5-15	31 x 13.5-15
<b>TRACTOR REQUIREMENTS</b>			
Tongue/hitch	Drawbar	Standard drawbar, optional drawbar with swivel gearbox, or 2-point hitch with swivel gearbox, category II or III N	Drawbar with swivel gearbox, or 2-point hitch with swivel gearbox, category II or III N
Drive PTO	540 rpm	540 rpm	1,000 rpm
PTO horsepower recommended	65 hp (48.5 kW)	75 hp (56 kW)	90 hp (67 kW)
Hydraulic type	2 double acting	2 double acting	2 double acting
Hydraulic pressure	1,900 psi (131 bar)	1,900 psi (131 bar)	1,900 psi (131 bar)
Hydraulic flow rate	6 gpm (22.7 L/min)	6 gpm (22.7 L/min)	6 gpm (22.7 L/min)
<b>CUTTER BAR</b>			
Cutter bar type	Q3® cutter bar	Q3® cutter bar	Q3® cutter bar
Cut height	1 in - 8 in (2.5 cm - 20.3 cm)	1 in - 8 in (2.5 cm - 20.3 cm)	1 in - 8 in (2.5 cm - 20.3 cm)
Number of discs	6	7	8
Disc diameter	23.1 in (58.7 cm)	23.1 in (58.7 cm)	23.1 in (58.7 cm)
Disc speed	2,700 rpm	2,700 rpm	2,700 rpm
Number of blades	12	14	16
Angle adjustment	Hydraulic pitch control	Hydraulic pitch control	Hydraulic pitch control
Quick-Clip® blade retention system	Standard	Standard	Standard
Quick-Change™ shear ring	Standard	Standard	Standard
Curtain material	1,400-g/m <sup>2</sup> polyester woven material with flexible PVC covering	1,400-g/m <sup>2</sup> polyester woven material with flexible PVC covering	1,400-g/m <sup>2</sup> polyester woven material with flexible PVC covering
3-year limited cutter bar warranty	Standard	Standard	Standard

SPECIFICATION	MC2800 MOWER CONDITIONER	MC3300 MOWER CONDITIONER	MC3700 MOWER CONDITIONER
<b>FEATURES</b>			
Optional swath formation	Standard crop forming shields	Standard crop forming shields	Standard crop forming shields
Skid shoes	Optional wear skids	Optional wear skids	Optional wear skids
Highway lights	Standard	Standard	Standard
<b>ROLLER CONDITIONER</b>			
Type	Intermeshing steel rollers or rubber rollers	Intermeshing steel rollers or rubber rollers	Intermeshing steel rollers or rubber rollers
Conditioner drive	(4) 5V belts	(4) 5V belts	(4) 5V belts
Conditioner width	86 in (218.4 cm)	102 in (259.1 cm)	118 in (299.7 cm)
Roller diameter	9.3 in (23.6 cm)	9.3 in (23.6 cm)	9.3 in (23.6 cm)
Roller speed	740 rpm	740 rpm	740 rpm
Windrow width minimum	36 in (91.4 cm)	40 in (101.6 cm)	48 in (121.9 cm)
Windrow width maximum	82 in (208.3 cm)	95 in (241.3 cm)	108 in (274.4 cm)
Platform (for tall crops)	Standard	Standard	Standard
Topping high cut kit	Standard	Standard	Standard
<b>TINE CONDITIONER</b>			
Type	V-tine	V-tine	V-tine
Conditioner drive	(4) 5V belts	(4) 5V belts	(4) 5V belts
Conditioner width	86 in (218.4 cm)	102 in (259.1 cm)	118 in (299.7 cm)
Working diameter	22 in (55.9 cm)	22 in (55.9 cm)	22 in (55.9 cm)
Tine speed low	800 rpm	800 rpm	800 rpm
Tine speed high	1,000 rpm	1,000 rpm	1,000 rpm
Windrow width minimum	36 in (91.4 cm)	40 in (101.6 cm)	48 in (121.9 cm)
Windrow width maximum	88 in (223.5 cm)	110 in (279.4 cm)	110 in (279.4 cm)
Topping high cut kit	Standard	Standard	Standard



**Vermeer Corporation**  
**1410 Vermeer Road East**  
**Pella, Iowa 50219**  
**800-370-3659 • [vermeer.com](http://vermeer.com)**

Vermeer Corporation reserves the right to make changes in engineering, design and specifications; add improvements; or discontinue manufacturing at any time without notice or obligation.

Equipment and depictions shown are for illustrative purposes only and may display optional accessories or components specific to their global region. Please contact your local Vermeer dealer for more information on machine specifications.

Specifications, descriptions and illustrative material herein are as accurate as known at time of publication, but are subject to change without notice. Availability of some models and equipment builds varies according to the country in which the equipment is used.

Vermeer, the Vermeer logo, Quick-Clip, Quick-Change and Q3 are trademarks of Vermeer Manufacturing Company in the U.S. and/or other countries.

© 2021 Vermeer Corporation. All Rights Reserved.

LF 21-01037 08/21 ML (23K) / PN#510505090

**Vermeer**



**2022 MOWERS**