



AutoSelect
3000 SA/3000/5000

... and the route is set

GEA Milking & Cooling | WestfaliaSurge



... and the route is set



With AutoSelect you set the route for your animals!

Careful treatment and inspection of the animals is a basic requirement for a healthy and productive herd. With the segregation gates from GEA Farm Technologies, manually searching for and constantly segregating your herd is a thing of the past! GEA Farm Technologies offers different systems for automatically separating individual animals or groups of animals efficiently, quickly and reliably.

But how can an effective segregation system work without a lot of expense?

No matter which system you choose, the AutoSelect 3000/3000 SA and 5000 segregation gates will save you a lot of valuable working time.

Positioned at the exit of the milking parlour, your animals individually pass through the segregation area. Depending on the intended treatment, the animals will be quickly and reliably separated from the herd. The system functions simply by using electronic animal identification, either in conjunction with the Dairy-Management System 21 or as a "stand alone" system. With a data connection, all that is needed are a few really simple entries on the milking parlour terminal or the office computer.

AutoSelect 3000 SA (Stand Alone) the first step towards automation

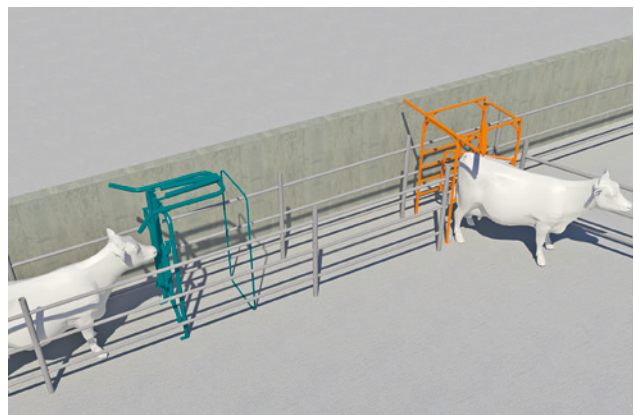
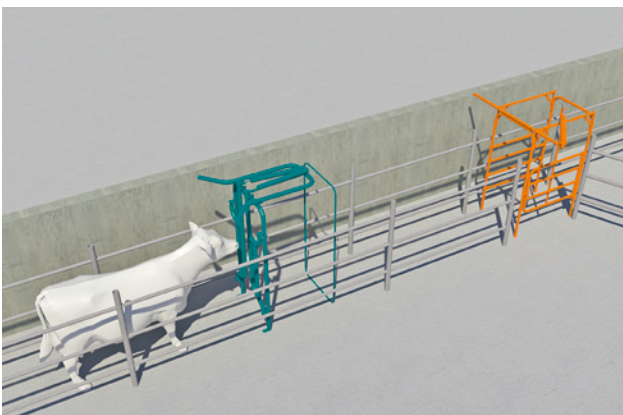
AutoSelect 3000 SA is particularly suitable for quick, reliable and easy segregation of individual animals. During milking, a responder is fastened to the rear ankle of the animal to be segregated with Velcro. As soon as that animal enters the segregation area it is identified by the responder and assigned to the corresponding segregation area. Even and uneven numbers determine which segregation path will be set. After treatment the responder is simply removed.

With AutoSelect 3000 – connected to DairyManagementSystem21 – the animals have a responder permanently fitted. Segregation is controlled centrally via DairyPlan C21, and segregation tasks can be set according to the intended treatment. So segregation can run completely automatically



The animal is identified just after the entry gate. The entry gate immediately closes behind the animal.
Effect: The segregation area is shut off from following animals. Light beams in this area check the segregation paths.
Result: Maximum segregation accuracy!

The segregation gate only opens for the animal to be segregated when the light beams indicate that the previous animal has left the segregation area.
Effect: The segregation process is optimally coordinated.
Result: Maximum working efficiency.



AutoSelect 5000

... enables a wide variety of customised segregation solutions, for group and individual segregation in DairyManagementSystem 21 (up to 5 segregation gates; max. four separation areas).



The first identification antenna identifies the animal, causing the segregation gate to open to the designated segregation area. This remains open until an animal is identified that is to be diverted to a different area.

Effect: No unnecessary interruptions to cow traffic.

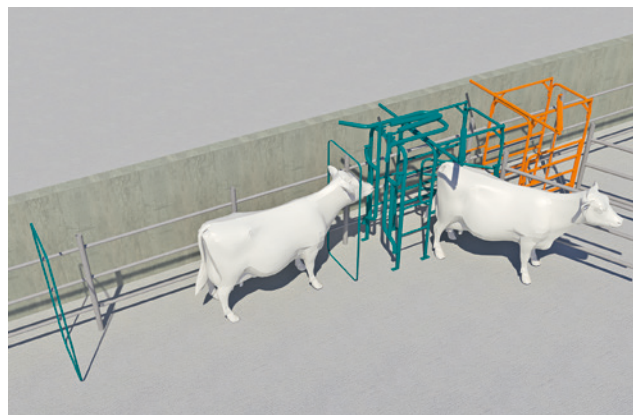
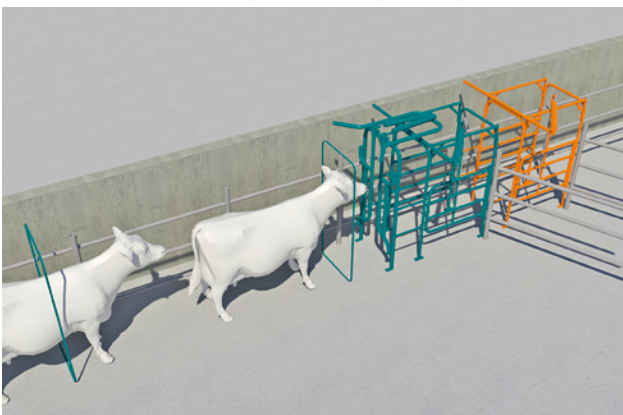
Result: Stress-free cow flow through the segregation area. The following animal is to be segregated to a different area.

Effect: The entry gate closes behind the preceding animal

Result: Segregation errors are avoided ensuring a high level of working efficiency. Once the light beams report that the first animal has left the segregation area the segregation gates are reset and the entry gate opens

Effect: the animal is sorted into the new allocated area.

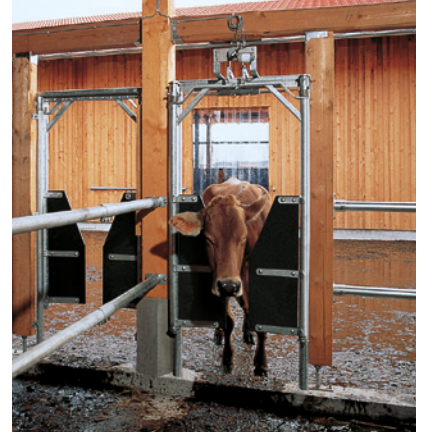
Result: calm but swift and accurate selection that is particularly suited to group segregation.



FeedSelect – the door to feeding



Unlike automated animal segregation, with FeedSelect the dairy herd is divided into yield groups and are fed selectively in the barn. Permission to enter the TMR areas is connected with segregation characteristics. The gate only opens when the animal is identified by the responder/ res-counter and has been given entry authorisation in DairyPlan C21.



AutoSelect 3000 SA – the guidance system without data connection to DairyManagementSystem 21

- a reliable, semi-automated individual animal segregation system
- easy to use with segregation logic set by the individual application of responders
- up to 3 segregation channels possible for simultaneous segregation for different treatment purposes
- high level of segregation reliability
- can be integrated into DairyManagementSystem 21 later without any major conversion work

AutoSelect 3000 – the guidance system with data connection to DairyManagementSystem 21

- a reliable, fully automated individual animal segregation system
- controlled via DairyPlan C21 (segregation specifications can be entered regardless of milking time or milking parlour)
- up to 3 segregation channels possible, for simultaneous segregation for different treatment purposes
- segregation conditions (e.g. high level of activity, etc.) can be programmed in DairyPlan C21
- high level of automation and therefore minimal herd management organisation work

AutoSelect 5000 – the guidance system with data connection to DairyManagementSystem 21

- a reliable, fully automated individual and group segregation system
- up to 5 segregation paths possible for simultaneous segregation for different treatment purposes
- controlled via DairyPlan C21
- upstream identification (before the segregation area)
- up to two segregation channels can be arranged one after the other (flexible for many structural solutions)
- high level of segregation reliability
- flexible for different structural solutions (old buildings, etc.)
- Taxatron scales can be integrated



We live our values.

Excellence • Passion • Integrity • Responsibility • GEA-versity

GEA Group is a global engineering company with multi-billion euro sales and operations in more than 50 countries. Founded in 1881, the company is one of the largest providers of innovative equipment and process technology. GEA Group is listed in the STOXX® Europe 600 index.

GEA Farm Technologies GmbH

Siemensstraße 25 - 27, D-59199 Bönen
Tel. +49 (0) 23 83 93 7-0, Fax +49 (0) 23 83 93 8-0
www.gea.com | www.gea-farmtechnologies.com