



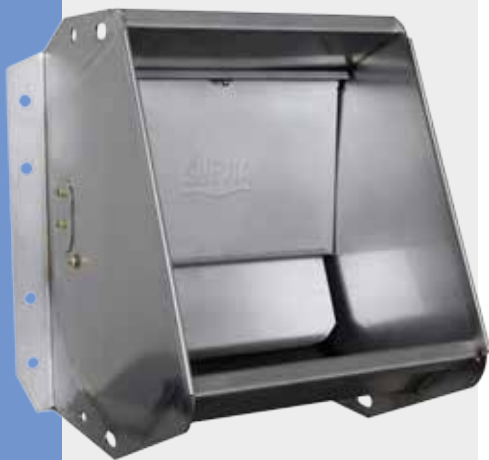
## TROUGHS AND DRINKERS FOR FREE STALLS



### INSIDER TIP!

#### Always fresh and clean water for the animals!

Due to water flow and special design of the bowl: feed rests are flushed by the running water and drunk by the animals at the same time.



### SUEVIA Valve Trough Drinkers

- Ideal for cattle and dairy cows in free stalls – **space-saving, self-cleaning design!**
- Completely made of **stainless steel**
- Water flow of up to **30 l/min** permits a continual and efficient watering of the animals
- Valve operation via broad and smoothly running valve flap
- Weight-loaded valve, suited for high and low water pressure
- Connection to a water circuit with connection set for  $\frac{3}{4}$ " water circuits and in combination with a SUEVIA heating unit
- **Always fresh and clean water for your animals:** due to water flow and special design of the bowl: feed rests are flushed by the running water and drunk by the animals at the same time
- Bowl covered towards the upper lip to prevent dirt entry
- Suited for wall or pipe mounting

#### ACCESSORIES:

- **Protection bar, hot-galvanized**, for Mod. 480, 500, 600 (Ref. 131.1391)
- NEW!** • **Protection bar, hot-galvanized**, for Mod. 520, 620 (Ref. 131.1393)
- **Fixation 90°, hot-galvanized**, for Mod. 480, 500, 600 (Ref. 131.1050)
- **Protection bar, hot-galvanized**, for Mod. 480, 500, 600, if installed with fixation 90° (Ref. 131.1394)

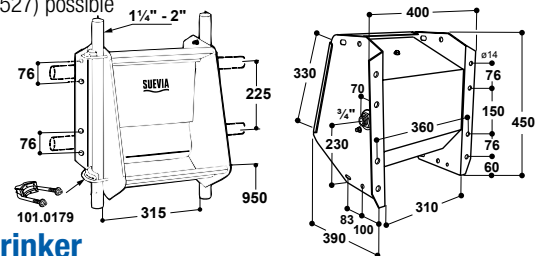
#### RECOMMENDED FOR:

Dairy cows, cattle

### Valve Trough Drinker Model 500

Order Ref. 130.0500

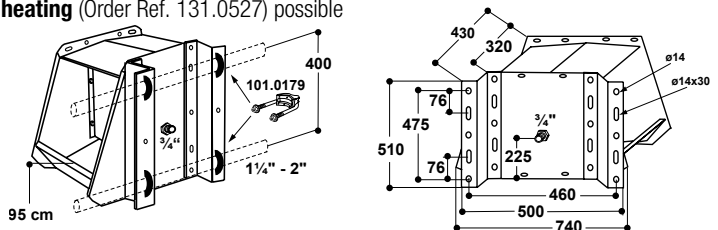
- Trough with **one** drinking place suited for **15 – 20 animals**
- $\frac{3}{4}$ " **male connection from right or left side** is possible by changing the valve from right to left or vice versa
- Subsequent installation of one **heating element** (Order Ref. 131.0523) and of a **valve heating** (Order Ref. 131.0527) possible



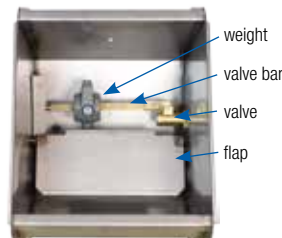
### Double Valve Trough Drinker Model 520

Order Ref. 130.0520

- Trough drinker with **two facing drinking places** for **30 – 40 animals**
- No fights for an individual place as alongside longer troughs, enabling **two animals to drink simultaneously**
- $\frac{3}{4}$ " lateral male connection
- Supports for lateral wall mounting inclusive
- Subsequent installation of **1 or 2 heating elements** (Order Ref. 131.0524) and of a **valve heating** (Order Ref. 131.0527) possible



Mod. 500



Mod. 500 or 520



Mod. 520



## TROUGHS AND DRINKERS FOR FREE STALLS

### Options for Frost Protection

#### Frost protection by Heating Element

If frost protection in case of Model 500/520 is desired, a **heating element** (24 V, 80 W) is fixed under the trough. In order to ensure a frost-free feed pipe, a **frost protection heating cable** 24 V, 20 W, 2 m (Order Ref. 101.0861), or a 24 V, 30 W, 3 m (Order Ref. 101.1863) is wrapped around the feed pipe and connected to the heating element in parallel to the power supply cable, coming from the transformer. The heating cable and the water line have to be insulated, however, additionally and protected against biting. For power supply a SUEVIA **Transformer** 230/24 V is necessary (for correct choice of transformer see page 25). For automatic switch on/off of transformer a **thermostat** (Order Ref. 101.0389) can be additionally installed (see page 25).

#### Correct choice of Heating Element:

- **For Model 500:** Heating element Model. 523 (Order Ref. 131.0523), 24 V, 80 W, to maintain the water frost-protected in the trough
- **For Model 520:** Heating element Model 524 (Order Ref. 131.0524), 24 V, 80 W: installation of one or two heating elements is possible to maintain the water frost-protected in the double trough

#### Increased frost protection down to -35°C (suited for both troughs)

Valve Heating Model 527 (24 V, 7 W, Order Ref. 131.0527) can be supplied on demand for subsequent installation.

#### Connection to a feed pipe

To ensure a frost-free feed pipe, a **frost protection heating cable** 24 V, 20 W, 2 m (Order Ref. 101.0861), or a 24 V, 30 W, 3 m (Order Ref. 101.1863) has to be used. The heating cable should be wrapped around the feed pipe and connected to the heating element of the drinker in parallel to the power supply cable, coming from the transformer. If this heating cable is installed on plastic pipes, make sure that this water pipe is suited for warm and cold water. For better heat distribution the water pipe has to be wrapped first with an aluminium adhesive tape (Order Ref. 101.1099).

#### Integration into a water circuit line

- In combination with a SUEVIA **connection set for ¾" water circuits** (Order Ref. 103.1984, 103.3004) an easy integration of Model 500/520 into a water circuit is possible! For connection to a water circuit we recommend **heating units** (p. 28 – 31).
- In order to prevent water in the bowl from freezing, use additionally a heating element Model 523 or Model 524. Transformer necessary!
- **For extremely cold areas subsequent installation of a valve heating Model 527** (24 V, 7 W, Order Ref. 131.0527) is recommended for increased frost protection.

Order Ref.	Type	Packing Hints		
130.0500	Valve trough drinker Mod. 500	1 piece		
130.0520	Double valve trough drinker Mod. 520	1 piece		
131.1391	Protection bar, hot-galvanized, for Mod. 480, 500, 600	1 piece		
<b>NEW!</b> 131.1393	Protection bar, hot-galvanized, for Mod. 520, 620	1 piece		
131.1050	Fixation 90°, hot-galvanized, for Mod. 480, 500, 600	1 piece		
131.1394	Protection bar, hot-galvanized, for Mod. 480, 500, 600 if installed with fixation 90°	1 piece		
131.0523	Heating element Mod. 523, 24 V, 80 W	1 piece		
131.0524	Heating element Mod. 524, 24 V, 80 W	1 piece		
131.0527	Valve heating Mod. 527, 24 V, 7 W	1 piece/bag		
101.0380	Transformer 230/24 V, 100 W	1 piece/box		
101.0390	Transformer 230/24 V, 200 W	1 piece/box		
101.0392	Transformer 230/24 V, 400 W	1 piece/box		
101.0861	Frost protection heating cable, 24 V, 20 W, 2 m	1 piece		
101.1863	Frost protection heating cable, 24 V, 30 W, 3 m	1 piece		
101.1099	Aluminium adhesive tape, 50 mm wide, 50 m	50 m/roll		
101.0389	Thermostat	1 piece/box		
103.1984	Connection set for ¾" water circuits for Mod. 500, 600	1 piece/bag		
<b>NEW!</b> 103.3004	Connection set for ¾" water circuits for Mod. 520, 620	1 piece/bag		



131.0523

131.0524



131.0527  
Valve Heating  
installed in Model  
500



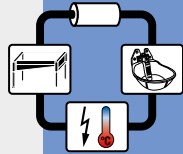
2 m: 101.0861  
3 m: 101.1863



103.3004  
for Mod. 520



103.1984  
for Mod. 500



131.1393  
Protection bar,  
hot-galvanized,  
for Mod. 520 and 620



131.1391  
Protection bar,  
hot-galvanized,  
for Mod. 480, 500, 600



131.1394  
Protection bar (for Mod. 480,  
500, 600, if installed with  
fixation 90°), hot-galvanized

131.1050  
Fixation 90°,  
hot-galvanized  
for Mod. 480,  
500, 600

