

SMWA + SMO skid steer

150-250 bar | 40-150 l/min

Professional greenspace maintenance on compact loaders

The compact mulchers SMWA skid steer and SMO skid steer mulch grass and brush up to 5 cm [2"] and 7 cm [2.8"] in diameter.

These machines are particularly suitable for the maintenance of greenspace. They efficiently cut and mulch grass and light brush. Typical applications are on construction sites, in parks, on roadsides and on farms.

Standard version and specifications

- > SMWA skid steer mulches grass and branches up to 5 cm [2"]Ø

- > SMO skid steer mulches wood grass and branches up to 7 cm [2.8"]Ø

- > Working speed 3-10 km/h

- > Chassis made of high tensile steel S420

- > SAE skid steer attachment interface, floating to follow the contours of the ground

- > Belt transmission

- > Adjustable rear hood M-FLAP with rubber protection

- > Front protection with metal flaps

- > Adjustable support roller

- > Triple helical rotor with flails

- > 2 rows of tempered counter cutters

Optional configuration and accessories


- > Rotor with Y-flails

- > Variable displacement motor with relief valve

- > Roller scraper

- > Universal attachment for wheel loader



 www.youtube.com/seppimulcher

Specifications · SMWA skid steer

Working width	155 cm [61"]	175 cm [69"]
Overall width	167 cm [66"]	187 cm [74"]
Depth	90 cm [35"]	90 cm [35"]
Height	95 cm [37"]	95 cm [37"]
Weight · base value w/o options	445 kg [980 lb]	496 kg [1.090 lb]
Belts	3	4
SMW flails standard	15	18
Flails Y DUO option	27	33

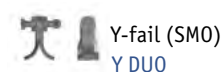
Specifications · SMO skid steer

Working width	200 cm [79"]
Overall width	215 cm [83"]
Depth	110 cm [43"]
Height	110 cm [43"]
Weight · base value w/o options	685 kg [1,510 lb]
Belts	5
SMO flails standard	21
Flails Y DUO option	39

Tools · SMWA skid steer



Tools · SMO skid steer





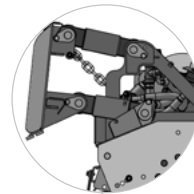
High-performance hydraulic drive

The transmission system of **SMWA skid steer** and **SMO skid steer** adapts to motors with hydraulic flow rates from 40 to 150 l/min. We are offering different variable displacement hydraulic motors with a relief valve. Your SEPPI M. dealer will help you choose the optimum motor for your application.

HYDRAULIC DRIVE	
Pressure	150-250 bar [2,175 - 3,625 psi]
Required hydraulic flow	40-150 l/min [10.6 - 39.6 gpm]
Required hydraulic hoses	3 (pressure, return, drainage)
Case drain pressure	max. 1.5 bar

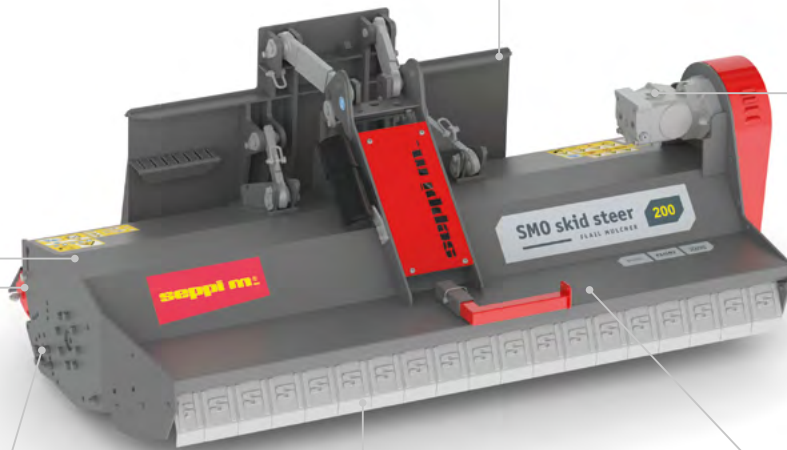


SMWA skid steer *



Floating attachment to follow the contours of the ground
FLOAT

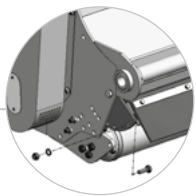
Chassis made of high tensile steel
S420



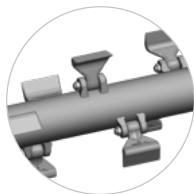
SMO skid steer *

Variable displacement piston motor (option)

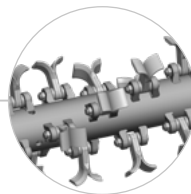
Adjustable hood to set the degree of mulching
M-FLAP



Reinforced bearing



Standard rotor with SMW/SMO flails



Optional rotor with Y flails



Tempered counter cutters for a perfect mulching result



* new color combination from 2021