

L9 flex

100-180 HP Ø max. 9 cm [3.5 inch]

Large load mulcher for professional use

The model **L9 flex** is a powerful and reliable ditch mulcher for large areas.

The particularly stable construction with the PENTALINK system allows the mulcher its high performance along riverbanks and roadsides.

Its new design renders it possible to clear wide ditches efficiently while it can also be tilted up or down while operating by means of a hydraulic system. This characteristic makes the mulcher perfect for all those sloping terrains described above.

The FLEX-SAFE anti-collision system guarantees the operator time to react.

The wide-diameter mulcher roller facilitates driving on uneven terrain. It is height-adjustable and able to define the cutting height.

Standard version and characteristics

- > Mulches grass and brush up to 9 cm [3.5"] Ø
- > Working speed 3-10 km/h
- > PENTALINK system
3 point linkage cat. 3
and 2 additional attachment points
- > FLEX-SAFE anti-collision system
- > 540 rpm gearbox
- > Belt transmission
- > Hydraulic side shift
- > Hydraulic inclination
- > Support roller under the base unit,
adjustable roller under the mulcher
- > Front protection with chains
- > Rear protection with rubber
- > Triple helical rotor with flails
- > 2 rows of tempered counter cutters

Optional configuration and accessories

- > PTO drive shaft
with double wide angle
- > 750 or 1000 rpm gearbox
- > Roller scraper
- > Hydraulic adjustable front hood
(not available for 275)
- > Additional front rubber flap

Required hydraulic fittings

2 double acting



www.youtube.com/seppimulcher

Specifications · L9 flex

		175 [69]	200 [79]	225 [89]	200 [79]	225 [89]
Working width	cm[inch]	175 [69]	200 [79]	225 [89]	200 [79]	225 [89]
Overall width	cm[inch]	225-415 [89-163]	225-440 [89-173]	225-465 [89-183]	225-490 [89-193]	225-515 [89-203]
Depth · transport	cm[inch]	140 [55]	140 [55]	140 [55]	140 [55]	140 [55]
Height	cm[inch]	110-245 [43-96]	110-270 [43-106]	110-295 [43-116]	110-320 [43-126]	110-345 [43-136]
Weight · base value	kg [lbs]	1.580 [3,480]	1.650 [3,640]	1.720 [3,790]	1.800 [3,970]	1.880 [4,140]
Belts	qty	5	5	5	5	5
Flails	qty	18	21	24	27	27
Tractor weight	kg	4.000 [8,800]	4.000 [8,800]	4.000 [8,800]	4.500 [9,900]	4.500 [9,900]
Nominal Power	HP	100-180	100-180	100-180	100-180	100-180

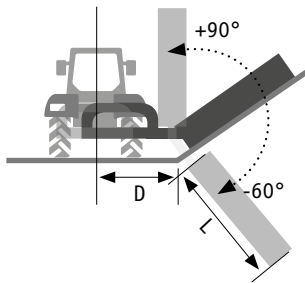
Tools
Flails



SMO

L9 flex · features

Strong and robust casing made of high-tensile steel, with replaceable wear plates.

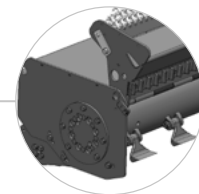


The boom can be angled 90 ° upwards and tilted 60° downwards

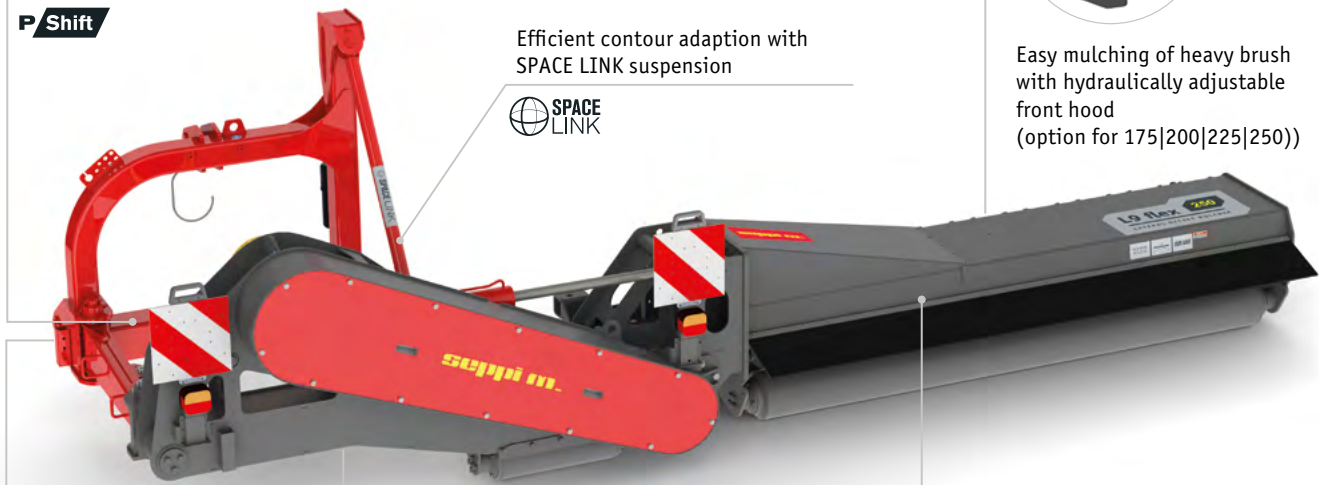
Working depth from the edge
 $L = \text{working width} + 20 \text{ cm [8 inch]}$
 Maximum reach with innovative parallelogram side shift
 $D = 124\text{-}231 \text{ cm [49-91 inch]}$

P/Shift

Efficient contour adaption with SPACE LINK suspension



Easy mulching of heavy brush with hydraulically adjustable front hood (option for 175|200|225|250)



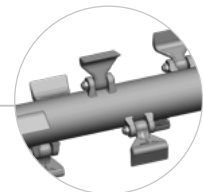
Safe and comfortable connection with PENTALINK stabilization system



Safety and prevention thanks to FLEX-SAFE anti-collision system



Tempered counter cutters for a perfect mulching result



Rotor with SMW/SMO flails
 Low power consumption at maximum throughput with HELIX ROTOR technology

