



DISC-O-VATOR®

Recognized as one of the most productive tillage tools in the industry, the Great Plains Disc-O-Vator can disk, cultivate, harrow, and incorporate herbicide – all in a single pass. The Disc-O-Vator's rugged frame is engineered to flex and hug

rolling terrain. This versatile, secondary tillage implement works well behind a fall chisel pass because the front discs chop residue and smooth the field before the sweeps run through the soil to reduce plugging.



DISC-O-VATOR MODELS

Disc-O-Vator®	Tillage Width	Transport Width	Transport Height	Engine H.P. Required	Weight
8315DVN	15' 9"	9' 10"	8' 6"	110+	6,650
8318DVN	17' 10"	9' 10"	9' 6"	130+	8,000
8321DVN	21' 7"	9' 10"	10' 9"	160+	9,200
8324DVN	23' 9"	9' 10"	12' 3"	170+	11,000
8321DV	20'	14'	9' 3"	145+	8,925
8324DV	23' 9"	14'	10' 9"	170+	10,200
8326DV	25' 3"	14'	12'	185+	11,050
8328DV	28'	14'	13' 3"	205+	11,890
8333DV	32'	16' 1"	14' 3"	230+	14,025
8537DV	36'	15'	12' 6"	260+	15,392
8544DV	42' 9"	15'	13' 3"	310+	18,320
8548DV	46' 6"	18' 3"	14' 9"	335+	19,968
8552DV	50' 9"	18' 3"	14' 9"	370+	21,632

See www.greatplainsag.com for complete specifications.
Specifications are subject to change without prior notification.
Images may not depict current or standard production models.

ADDITIONAL STANDARD FEATURES

- Heat-treated pull tongue for long life
- Single-point depth control
- Spring-loaded disc or coulters gangs
- True 4-rank, 5-row shank spacing w/ Max-Mix™ pattern
- 24½" of underframe clearance on all shank options
- 7" spacing w/ 2" overlap (9" sweeps)
- 8" blade spacing
- Walking tandems on centers (except narrow models)
- Load range "F" tires on center (designed for highway use)
- Standard inner section gauge wheels (5-section only)
- Heavy lift tubes w/ straddle axle walking tandems
- LED safety lighting

OPTIONS (see website for complete list of features & options)



3-BAR COIL TINE & REEL

4-BAR COIL TINE

3-ROW SPIKE & REEL

5-BAR HIGH-RESIDUE SPIKE

7-BAR SPIKE

3-Section Models

8315DVN, 8318DVN, 8321DVN, 8324DVN, 8321DV,
8324DV, 8326DV, 8328DV, 8333DV



5-Section Models

8537DV, 8544DV, 8548DV, 8552DV



FEATURES & BENEFITS

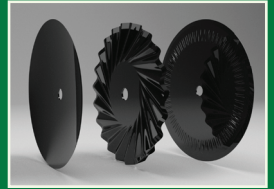
HYDRAULICALLY-ADJUSTABLE COULTERS

This feature allows you to change the depth of the coulters/discs independently of the shanks. It also enables you to adjust residue coverage levels on-the-go to meet government requirements on HEL ground.



CHOOSE YOUR DISC BLADES

Pick Turbo coulters (exclusive to Great Plains) or rippled coulters to size residue and run at faster ground speeds, or opt for 20" shallow-concavity discs to feather worked soil into ruts and wheel tracks.



CHOOSE YOUR SHANK & SWEEPS

Heavy-duty K-flex shank (left) has 185 lbs. of point trip force. Spring-loaded Magnum shank (right) has 205 lbs. of point trip force. Both shank styles are available in minimum draft or flat lower shanks. Sweep choices are either 9" regular or 9" hard-faced.



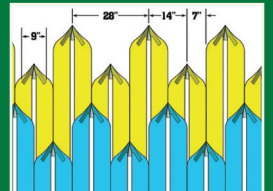
CONSTANT-LEVEL HITCH

Keeps implement level regardless of undulations in terrain.



NEW KNOCK-ON SWEEPS (Opt)

Quick-change system for installation and removal of sweeps. Once installed, change sweeps with a special tool and hammer.



MAX-MIX™ SHANK PATTERN

The Max-Mix shank design evenly spreads residue and incorporates fertilizer or manure for even distribution.