

High-Accuracy Fertilizer Spreaders



MDS .2 Series

www.KuhnNorthAmerica.com



Designed for a wide variety of crop operations, the MDS .2 Series offers many features and options to succeed in almost any application. A simple PTO drive and rugged low-maintenance gearbox operate twin spreading discs that offer working widths up to 80' (depending on the product applied) to finish large areas quickly and efficiently. Operators will appreciate the increased capacity of the available hopper extensions to work longer between refills, while the octagonal bottom reduces bridging and sticking for even cleanout. Redesigned metering outlet controls offer both electric and hydraulic options and the size of the outlet openings can be easily viewed from the tractor seat for improved operator comfort. Optional border control and banding attachments direct product to where it can provide the greatest return on investment – feeding the crop.



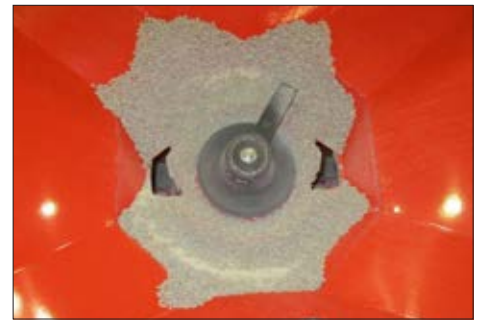
HYDRAULIC OUTLET CONTROL

Precision control of the metering outlets is essential to ensure that the right rate of fertilizer or seed is applied to the field. Each outlet is controlled by its own dual-acting hydraulic cylinder connected to the tractor's SCVs. The size of each outlet opening can easily be monitored on the indicators visible from the operator's seat.



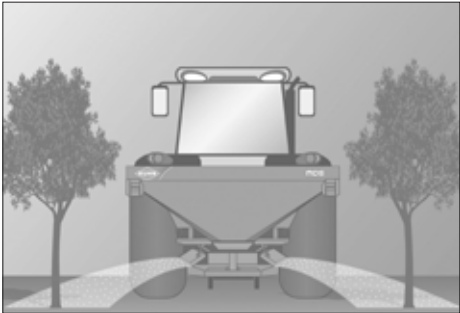
E-CLICK OUTLET CONTROL

For enhanced control, choose this electric metering outlet control option. One actuator for each outlet ensures reliability and precision, all controlled through the simple E-Click switch box. Just like the hydraulic version, convenient indicators for monitoring the outlets are visible from the operator's seat.



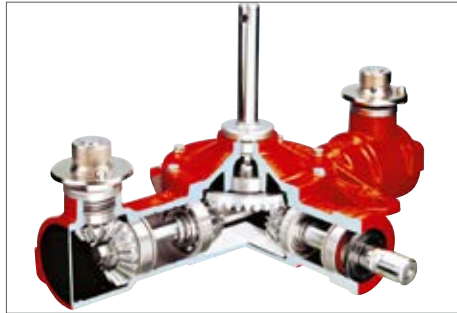
HOPPER BOTTOM DESIGN

Bridged material and incomplete hopper emptying are frustrating and reduce field efficiency. To ensure all of the product can get to the metering outlets, the new octagonal hopper bottom design funnels material toward the centrally located outlets for even distribution.



SPREADING ON TWO ROWS

The stainless steel banding option, for applications such as orchards and vineyards, features flaps that apply fertilizer on two rows of variable spacing that is 100% adjustable. This ensures that all nutrients are applied to the root area of the crop, saving valuable fertilizer. It can be quickly and easily adjusted without tools.



RELIABLE, LONG-LASTING DRIVE SYSTEM

Every MDS spreader utilizes a 540 RPM PTO drive connected to a reinforced oil-bath gearbox to drive the spreading discs and hopper agitator via a stainless steel shaft. This gearbox was designed for long life and minimal maintenance, with 10-year oil change intervals.



KUHN SPREADSET APP

The KUHN SpreadSet app will guide you through the settings to use for applying the right rate and creating a good spread pattern according to the fertilizer type, working width and speed. Available for both Android and iOS devices.

Technical Specifications

High-Accuracy Fertilizer Spreader

	MDS 8.2	MDS 14.2	MDS 18.2	MDS 20.2
Working Width	33'-80' (10-24 m) depending on disc selection and material			
Hopper Capacity	17.7 cu ft (500 L) basic; 28.3 cu ft (800 L) with optional extensions	28.3 cu ft (800 L) basic; 49.4 cu ft (1,400 L) with optional extensions	24.7 cu ft (700 L) basic; 63.6 cu ft (1,800 L) with optional extensions	31.8 cu ft (900 L) basic; 70.6 cu ft (2,000 L) with optional extensions
Maximum Hopper Payload	1,760 lbs (800 kg)	3,085 lbs (1,400 kg)	3,970 lbs (1,800 kg)	4,410 lbs (2,000 kg)
Filling Height	36.2" (92 cm)	41.0" (104 cm)	36.6" (93 cm)	39.8" (101 cm)
Total Hopper Width	42.5" (108 cm)	55.1" (140 cm)	74.8" (190 cm)	74.8" (190 cm)
Hopper Opening Width	38.6" (98 cm)	51.2" (130 cm)	70.1" (178 cm)	70.1" (178 cm)
Maximum Application Rate	550 lbs/min (250 kg/min)			
Application Rate Adjustment	Direct Flow Control (DFC) System			
Agitator Speed	180 RPM			
Half Width Shut-Off	Standard			
Hopper Grate	Standard			
Discs with Quick Removal System	Standard			
Hitch	Cat. 2			
PTO Speed	540 rpm			
Basic Machine Weight, approx.	419 lbs (190 kg)	463 lbs (210 kg)	463 lbs (210 kg)	507 lbs (230 kg)



KUHN NORTH AMERICA, INC.

Corporate Headquarters
1501 West Seventh Avenue - Brodhead, WI 53520

Information given in this document is only for informational purposes and is non-contractual. Our machines are in compliance with North American safety standards. In our literature, and for improved illustration of certain details, some safety devices may not be in operating position. When operating these machines, these devices must be operated in accordance with the requirements indicated in the operator's manuals and assembly manuals. We reserve the right to change any designs, specifications or materials listed without further notice. Machines and equipment in this document can be covered by at least one patent and/or registered design. Trademarks cited in this document may be registered in one or several countries.

Find us on

