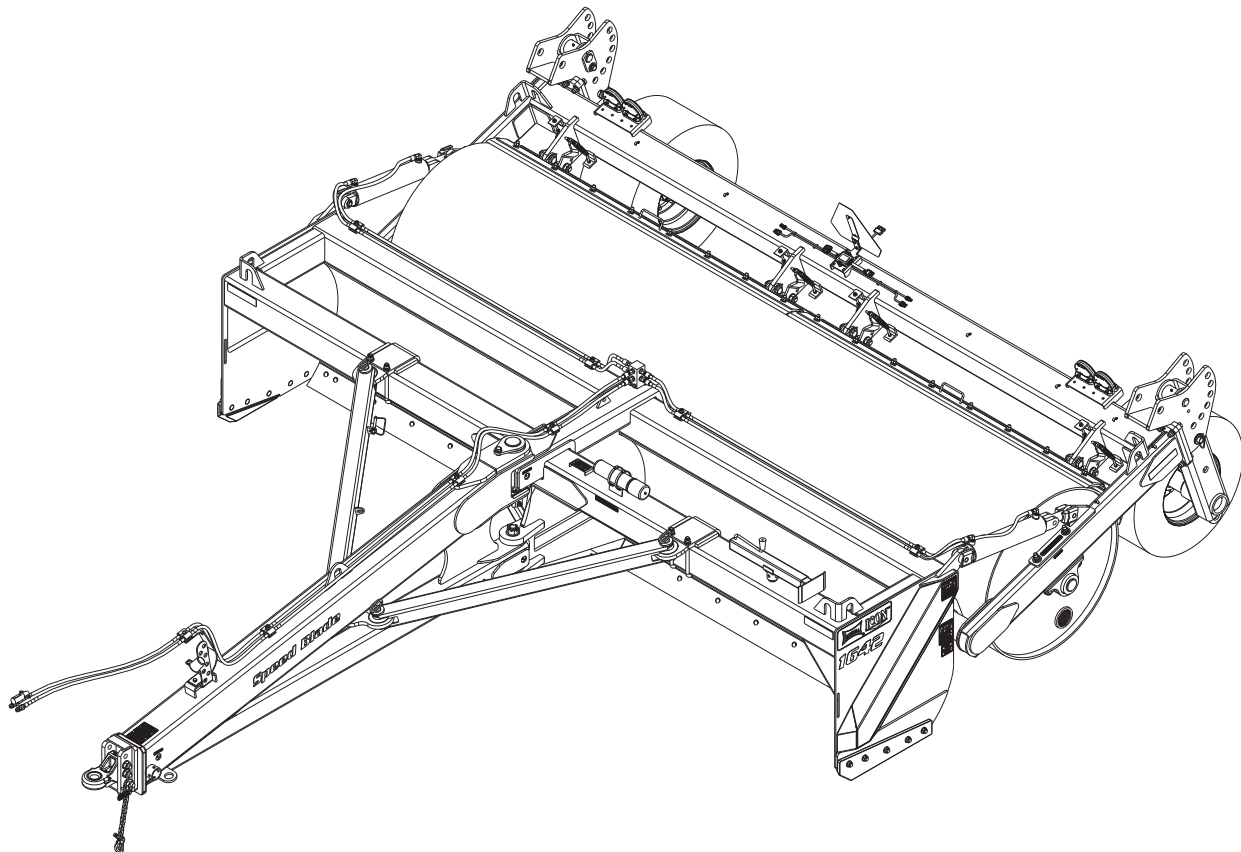




**Model 1242/1642
Speed Blade
Service/ Parts Manual**



LANDOLL COMPANY, LLC

1900 North Street

Marysville, Kansas 66508

(785) 562-5381

800-428-5655 ~ WWW.LANDOLL.COM

Manuals for the 1242-1642 Speed Blade

MANUAL NUMBER	MANUAL NAME
F-923	1242-1642 Service/Parts Manual

Table of Contents

1 Introduction

2 Safety Information

Introduction	2-1
Owner Assistance	2-1
Warranty Registration	2-1
Understanding Safety Statements	2-3
Safety Decals	2-4
Pinching or Crushing Danger	2-4
Moving Parts	2-4
Danger	2-4
Caution	2-4
Danger, High Pressure	2-4
Lubrication	2-4
Proper Notification	2-4
Storage Recommendations	2-4

3 Standard Specifications

Model Specification	3-1
General Torque Specifications (rev. 4/97)	3-3
Hydraulic Fitting Torque Specifications	3-4

4 Assembly and Lubrication

Assembly and Lubrication Check List	4-1
Lubrication Maintenance	4-1
Storage	4-1

5 Hookup & Operation

Speed Blade Hitch Swing	5-1
Hookup Tractor to Speed Blade	5-4
Hookup to the Remote	5-4
Learning to Operate the Speed Blade	5-4

6 Illustrated Parts List

General Assembly	6-1
Drum Assembly	6-3
MainFrame Assembly	6-5
Hitch Assembly	6-7
Hitch Assemblies	6-8
7,000 Lb. Sidewind Jack Assembly	6-11
Hydraulic Assembly	6-13
Hydraulic Cylinder, 4 X 18	6-15
Decal Locations & Arrangements	6-19
Transport Wheel Assembly (Option)	6-21
Hub/Spindle Assembly 191974 (Option)	6-23

7 Numerical Index

Introduction

The Landoll/Icon Speed Blade is a quality product designed to give years of trouble free performance. By following each section of this manual, your system will perform as designed for you and your operation

- CHAPTER 1** this section gives the layout of this manual.
- CHAPTER 2** this section has the safety information, The Warranty Registration form is included with the product documents. Fill it out and mail it within 15 days of purchase, instructs how to operate your equipment before using it, and describes adjustments needed. It also gives practical advice for the care and maintenance of your Landoll/Icon equipment. It also has the product warranty
- NOTE: IF THE EQUIPMENT IS IMPROPERLY ASSEMBLED OR MAINTAINED, THE WARRANTY IS VOID. IF YOU HAVE ANY QUESTIONS CONTACT:**
- LANDOLL COMPANY, LLC
1900 NORTH STREET
MARYSVILLE, KANSAS 66508
or phone:
(785) 562-5381 or
(800) 428-5655
or FAX:
(888) 527-3909**
- CHAPTER 3** gives product specifications. These specifications supply lengths and measures for your equipment. A Standard Bolt Torque Table is provided to give guidelines for bolt torques to be used when servicing this product. When these procedures are correctly followed, your equipment should provide you years of trouble-free operation and service.
- CHAPTER 4** gives assembly, lubrication, and storage information.
- CHAPTER 5** is the hookup and hitch swing operation of the Speed Blade.
- CHAPTER 6** is a illustrated parts list showing the various assemblies, subassemblies, and systems. Refer to this section when ordering Landoll replacement parts. Order parts from your Landoll dealer.
- COMMENTS** Address comments or questions regarding this publication to:
- LANDOLL COMPANY, LLC
1900 NORTH STREET
MARYSVILLE, KANSAS 66508
ATTENTION: PUBLICATIONS -DEPT. 55**

Safety Information

Introduction

This manual is compiled as a guide for owners and operators of the Pull Type Speed Blade. Read it carefully so as to be able to follow the suggestions made. Please take time to understand the proper maintenance schedule and SAFE operation of your equipment.

In the event that a new and inexperienced operator is placed in charge of running the equipment, they should read and understand, that part of the manual for proper maintenance and SAFE operation, and to be trained in regard by an experienced operator.

Owner Assistance

If customer service or repairs are needed, contact your Icon dealer. They have trained personnel, parts and service equipment specially designed for Icon products. Your machine's parts should only be replaced with Icon parts. Have the Serial Number and complete Model Number available when ordering parts from your Icon dealer (See Figure 2-1.)

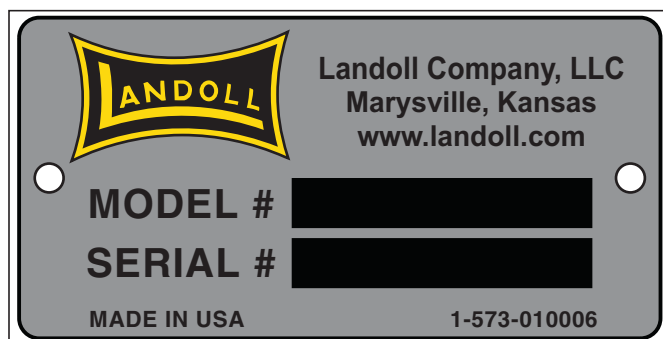


Figure 2-1: ID Plate

Warranty Registration

Be certain to register the grader, by Online registration at www.landoll.com within 10 days of purchase or lease, in order to be on file at Landoll and eligible for Warranty.

Take time to read and understand the Warranty for this product. That Warranty is printed in the Owner's Manual (See Figure 2-2), and a separate copy enclosed in the packet.

ICON/Landoll reserves the right to make changes and/or add improvements to its products at any time without obligation to previously manufactured equipment.

Please take time to complete the following information for your personal reference, should you need to contact your Dealer with questions or parts needs.

MODEL _____

SERIAL # _____

DATE OF PURCHASE _____

DEALER NAME _____

We at ICON/Landoll wish to thank you for purchasing our product. We have spent considerable time and effort to research, design, test and develop this machine and are confident it will serve you in the use for which it was designed.

LANDOLL COMPANY, LLC

Product Warranty

LANDOLL COMPANY, LLC 1600 W. 8th St. Beloit KS 67420
(referred to as LANDOLL in this document)

LANDOLL shall Warrant workmanship and materials on the **ICON Industrial Products** for a period of 270 calendar day from the date of original purchase, lease, or rental, from the original Dealer, and in accordance with the following terms and conditions.

Should any part or component fail within the Warranty period, and under normal use conditions, LANDOLL shall supply a new part or component for replacement through the original Dealer. Cost of normal ground freight, for that part or component to the Dealer, shall be paid by LANDOLL. Repair and replacement labor cost, from the original Dealer, shall be paid by LANDOLL at a rate negotiated by LANDOLL.

No further expense shall be paid by LANDOLL, including but not limited to, loss of time or income.

LANDOLL shall not provide Warranty on any part or component that has failed due to abuse, misuse, alteration, improper maintenance, or normal wear. Failure occurring while being pulled by a tractor in excess of engine horsepower, as described in the owners manual and/or posted on the machine, is considered abuse and misuse and shall not receive Warranty. Warranty applies only to normal, intermittent agricultural use, and not commercial or industrial use.

In regard to some components manufactured by other companies and sold by LANDOLL, including but not limited to tires, said Warranty shall be provided solely by that manufacturing company.

This Warranty applies to products sold in the United States and Canada, and is made expressly in place of all other warranties, expressed or implied.

Figure 2-2: Product Warranty

Understanding Safety Statements

You will find various types of safety information on the following pages and on the machine decals (signs) attached to the implement. This section explains their meaning.

NOTICE

Special notice - read and thoroughly understand.



CAUTION

Proceed with caution. Failure to heed caution may cause injury to person or damage product.



WARNING

Proceed with caution. Failure to heed warning will cause injury to person or damage product.



DANGER

Proceed with extreme caution. Failure to heed notice will cause injury or death to person and/or damage product.

NOTE

Means that failure to follow these instructions could cause damage to the equipment or cause it to operate improperly.

NOTE

Make sure you read and understand the information contained in this manual and on the machine signs (decals) before you attempt to operate or maintain this vehicle.

The safety statements contained in this manual relate to the operation of the Speed Blade.

NOTE

You should read and understand the information contained in this manual and on the machine decals before you attempt to operate or maintain this equipment.

- Examine safety decals and be sure you have the correct safety decals for the machine. Order replacement decals through your Icon dealer.
- Keep these signs clean so they can be observed readily. It is important to keep these decals cleaned more frequently than the machine. Wash with soap and water or a cleaning solution as required.
- Replace decals that become damaged or lost. Also, be sure that any new machine components installed during repair include decals which are assigned to them by the manufacturer.
- When applying decals to the machine, be sure to clean the surface to remove any dirt or residue. Where possible, sign placement should protect the sign from abrasion, damage, or obstruction from mud, dirt, oil etc.



DANGER

- **Keep Riders Off of Machinery**
- **Do not allow anyone to ride on tractor or machine. Riders could be struck by foreign objects or thrown from the machine.**
- **Never allow children to operate equipment.**
- **Keep bystanders away from machine during operation.**

Safety Decals

See page 6-17, **Decals** in parts section for decal locations.

NOTE

Replace all missing or damaged safety signs/decals.

Pinching or Crushing Danger

1. Moving parts that are operated by hydraulic pressure can cause serious injury or death.
2. Use extreme caution when working around any moving part.
3. Do not allow any person to be on or near the machine while it is in motion.

Moving Parts

1. Be aware of all moving parts of the machine.
2. Do not allow anyone to be near, or on the machine while operating any moving part.

Danger

1. Read and understand the operator's manual before using the machine.
2. Allow no person to operate the machine before reading the manual and being instructed on proper operation.

Caution

1. This machine is designed for off road use only.

Danger, High Pressure

1. High pressure fluid can cause serious damage to hands and eyes.
2. Carefully relieve pressure before attempting any
3. adjustments.
4. Tighten all fittings before applying pressure.

NOTE

*If fluid is sprayed into eyes or injected into skin, **see a doctor immediately!***

Lubrication

1. Lubrication information is placed near each zerk.
2. Proper maintenance should be followed to assure the working life of the machine. **See page 4-2**

Proper Notification

1. Contact the proper authorities before you dig.
2. When digging in a populated area, it is recommended that a call be made to area utilities to establish the local of any buried pipes, lines, or structures. When digging in open areas, research and know the local of any underground structures and objects.
3. Striking the blades or bits against buried objects can cause damage to the machine, and is considered as abuse to the unit.

Storage Recommendations

NOTE

If the machine is being stored or not in use for a long period of time, it is recommended that a coating of heavy grease be applied to the exposed chrome cylinder rods. This will help to protect the coating from moisture and rust during this time.

Standard Specifications

Model Specification

Specification		
	Model 1242	Model 1642
Working Width	12'	16'
Capacity	4.25 cubic yards	5.5 cubic yards
Bowl Height	42"	42"
Max Cutting Depth	6"	6"
Replaceable Cutting Edge	1/2" X 6" X 6'	1/2" X 6" X 8'
Clearance Under Blade (fully raised)	12"	12"
Length Overall w/o wheels	21'	21'
Width Overall	12' 6"	16' 6"
Height Overall	4'	4'
Folded Transport Width w/o wheels	10' 6"	10' 6"
Folded Transport Width w/ wheels	11' 6"	11' 6"
Empty Weight (drum not filled)	10,400 lbs	12,500 lbs
Wheel Kit Weight	1,250 lbs	1,250 lbs
Drum Capacity	775 gallons	1,000 gallons
Drum Dimensions	1/2" x 42" x 11' 7"	1/2" x 42" x 15' 7"
Drum Bearings	3" double tapered pillow block	3" double tapered pillow block
Cylinders	4" x 18" welded	4" x 18" welded
Hydraulic Hoses	3,000 psi rated	3,000 psi rated
Hitches	pintle style (standard) articulation ball (optional)	pintle style (standard) articulation ball (optional)
Grease Locations	7 total	7 total
Optional Wheel Kit	(2) 480/45R17 tires/wheels	(2) 480/45R17 tires/wheels

STANDARD SPECIFICATIONS

Tire Inflation			
Tire Size	Tire Manufacturer	Ply/Load Rating	Inflation Pressure (Psi) (Max.)
480/45R17	BKT	12,015LBS. @ 25MPH	78 psi

Recommended Torque Specification For Lug Bolts and Nuts	
Bolt Size	Torque (FT. LBS.)
5/8-18 (Heavy Duty Disc)	85 - 100 FT. LBS.

General Torque Specifications (rev. 4/97)

TORQUE SPECIFIED IN FOOT POUNDS - This chart provides tightening torques for general purpose applications when special torques are not specified on process or drawing. Assembly torques apply to plated nuts and cap-screws assembled without supplemental lubrication (as received condition). They do not apply if special graphite moly-disulfide or other extreme pressure lubricants are used. When fasteners are dry (solvent cleaned) add 33% to as received condition torque. Bolt head identification marks indicate grade and may vary from manufacturer to manufacturer. Thick nuts must be used on grade 8 cap-screws. Use value in [] if using prevailing torque nuts.

UNC SIZE	SAE Grade 2	SAE Grade 5	SAE Grade 8	UNF SIZE	SAE Grade 2	SAE Grade 5	SAE Grade 8
1/4-20	4 [5]	6 [7]	9 [11]	1/4-28	5 [6]	7 [9]	10 [12]
5/16-18	8 [10]	13 [13]	18 [22]	5/16-24	9 [11]	14 [17]	20 [25]
3/8-16	15 [19]	23 [29]	35 [42]	3/8-24	17 [21]	25 [31]	35 [44]
7/16-14	24 [30]	35 [43]	55 [62]	7/16-20	27 [34]	40 [50]	60 [75]
1/2-13	35 [43]	55 [62]	80 [100]	1/2-20	40 [50]	65 [81]	90 [112]
9/16-12	55 [62]	80 [100]	110 [137]	9/16-18	60 [75]	90 [112]	130 [162]
5/8-11	75 [94]	110 [137]	170 [212]	5/8-18	85 [106]	130 [162]	180 [225]
3/4-10	130 [162]	200 [250]	280 [350]	3/4-16	150 [188]	220 [275]	320 [400]
7/8-9	125 [156]	320 [400]	460 [575]	7/8-14	140 [175]	360 [450]	500 [625]
1-8	190 [237]	408 [506]	680 [850]	1-14	210 [263]	540 [675]	760 [950]
1-1/8-7	270 [337]	600 [750]	960 [1200]	1-1/8-12	300 [375]	660 [825]	1080 [1350]
1-1/4-7	380 [475]	840 [1050]	1426 [1782]	1-1/4-12	420 [525]	920 [1150]	1500 [1875]
1-3/8-6	490 [612]	1010 [1375]	1780 [2225]	1-3/8-12	560 [700]	1260 [1575]	2010 [2512]
1-1/2-6	650 [812]	1460 [1825]	2360 [2950]	1-1/2-12	730 [912]	1640 [2050]	2660 [3325]
1-3/4-5	736 [920]	1651 [2063]	2678 [3347]	1-3/4-12	920 [1150]	2063 [2579]	3347 [4183]

METRIC:
Coarse thread metric class 10.9 fasteners and class 10.0 nuts and through hardened flat washers, phosphate coated, Rockwell "C" 38-45. Use value in [] if using prevailing torque nuts.

Nominal thread diameter (mm)	Newton Meters (Standard Torque)	Foot Pounds (Standard Torque)	Nominal Thread Diameter (mm)	Newton Meters (Standard Torque)	Foot Pounds (Standard Torque)
6	10 [14]	7 [10]	20	385 [450]	290 [335]
7	16 [22]	12 [16]	24	670 [775]	500 [625]
8	23 [32]	17 [24]	27	980 [1105]	730 [825]
10	46 [60]	34 [47]	30	1330 [1470]	990 [1090]
12	80 [125]	60 [75]	33	1790 [1950]	1340 [1450]
14	125 [155]	90 [115]	36	2325 [2515]	1730 [1870]
16	200 [240]	150 [180]	39	3010 [3210]	2240 [2380]
18	275 [330]	205 [245]	-----	-----	-----

Table 3-1: General Torque Specifications

Hydraulic Fitting Torque Specifications

TORQUE IS SPECIFIED IN FOOT POUNDS- 37° JIC, ORS, & ORB (REV. 10/97)

This chart provides tightening torques for general purpose applications when special torques are not specified on process or drawing. Assembly torques apply to plated nuts and capscrews assembled without supplemental lubrication (as received condition). They do not apply if special graphite moly-disulfide or other extreme pressure lubricants are used. When fasteners are dry (solvent cleaned) add 33% to as received condition torque. Bolt head identification marks indicate grade and may vary from manufacturer to manufacturer. Thick nuts must be used on grade 8 capscrews. Use value in [] if using prevailing torque nuts.

Parker Brand Fittings			
Dash Size	37 Degree JIC	O-Ring (ORS)	O-Ring Boss (ORB)
-4	11-13	15-17	13-15
-5	14-16	-----	21-23
-6	20-22	34-36	25-29
-8	43-47	58-62	40-44
-10	55-65	100-110	58-62
-12	80-90	134-146	75-85
-16	115-125	202-218	109-121
-20	160-180	248-272	213-237
-24	185-215	303-327	238-262
-32	250-290	-----	310-340
Gates Brand Fittings			
Dash Size	37 Degree JIC	O-Ring (ORS)	O-Ring Boss (ORB)
-4	10-11	10-12	14-16
-5	13-15	-----	-----
-6	17-19	18-20	24-26
-8	34-38	32-40	37-44
-10	50-56	46-56	50-60
-12	70-78	65-80	75-83
-14	-----	65-80	-----
-16	94-104	92-105	111-125
-20	124-138	125-140	133-152
-24	156-173	150-180	156-184
-32	219-243	-----	-----
Aeroquip Brand Fittings			
Dash Size	37 Degree JIC	O-Ring (ORS)	O-Ring Boss (ORB)
-4	11-12	10-12	14-16
-5	15-16	-----	16-20
-6	18-20	18-20	24-26
-8	38-42	32-35	50-60
-10	57-62	46-50	75-80
-12	79-87	65-70	125-135
-14	-----	-----	160-180
-16	108-113	92-100	200-220
-20	127-133	125-140	210-280
-24	158-167	150-165	270-360
-32	245-258	-----	-----

Table 3-2: Hydraulic Fitting Torque Specifications

Assembly and Lubrication

Assembly and Lubrication Check List

1. Lubricate all moving components with high temp grease.
2. Fill hydraulic systems with Mobil 424 hydraulic oil using hydraulic pump, activate all moving parts and bleed air from the system. Hold 3000 psi. hydraulic pressure against all cylinders, fittings, and hoses.
3. Check hydraulic components for leaks.
4. Recheck that all retainers are installed.
5. Clean and touch up paint the machine.

Lubrication Maintenance

1. **Table 4-1** specifies the number and the period of lubrication points on the Speed Blade. Proper maintenance of your machine will, under normal operating conditions, help to keep it operating at or near its peak performance for an extended period of time. Proper maintenance is also a condition of keeping your warranty in good status (**See Figure 4-1.**)
2. When lubricating the Speed Blade, SAE multi-purpose EP grease, or EP grease with 3-5% molybdenum sulfide is recommended. Wipe soil from fittings before greasing. Replace any lost or broken fittings immediately.
3. Regular lubrication will extend service life, particularly in severe operating conditions.

Storage

1. The service life of the Speed Blade will be extended by proper off-season storage practices. Prior to storing the unit, complete the following procedures:
 - a. Completely clean the unit.
 - b. Inspect the machine for worn or defective parts. Replace as needed.
 - c. Repaint all areas where the original paint is worn off.
 - d. Grease all exposed metal surfaces.
 - e. Apply a light coating of oil or grease to exposed cylinder rods to prevent them from rusting.
 - f. Lubricate each point of the machine as stated in **“Lubrication Maintenance” on page 4-1.**
2. Store the unit in a shed or under a tarpaulin to protect it from the weather. The ground tools and tires should rest on boards, or some other object, to keep them out of the soil.

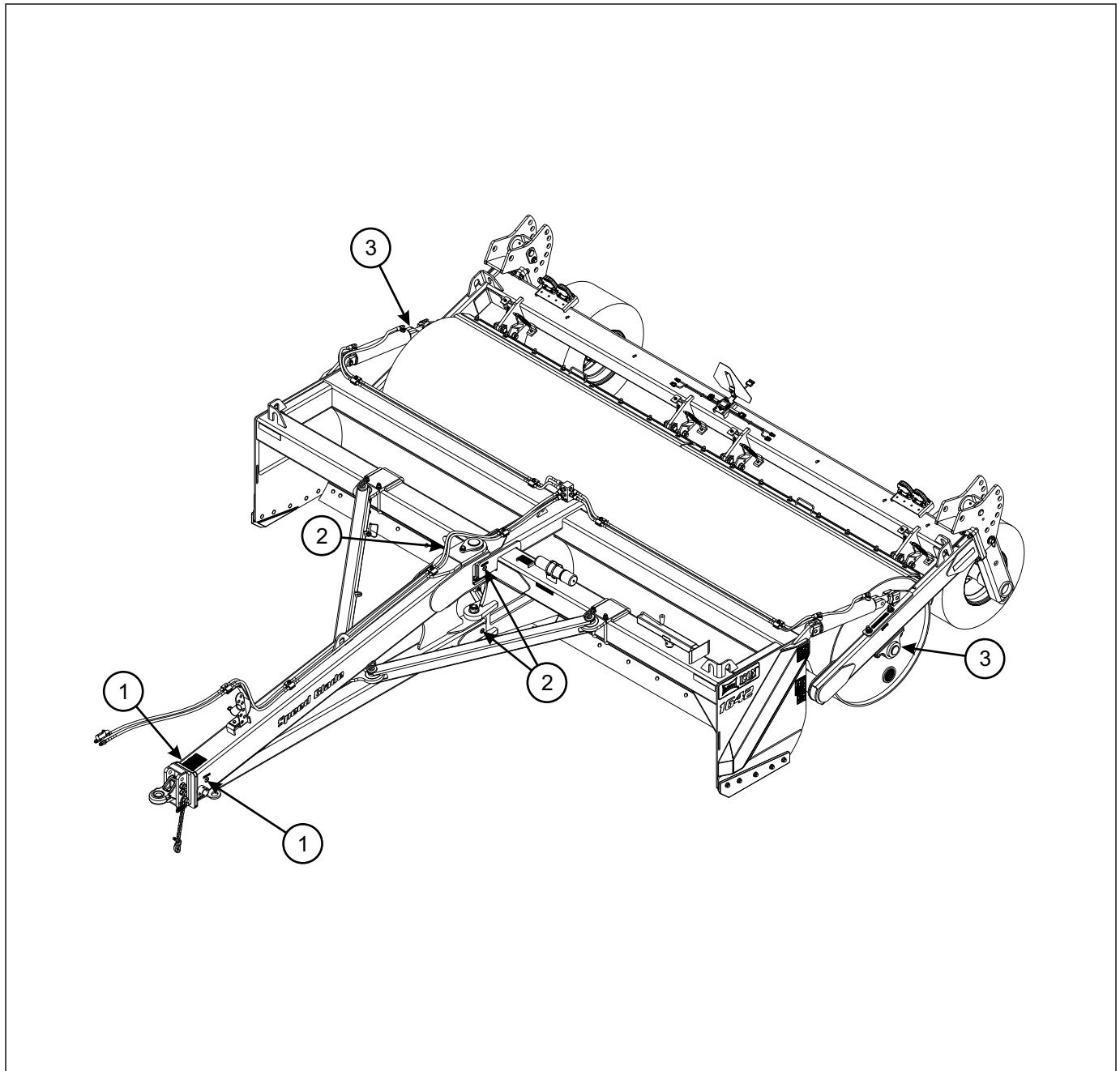


Figure 4-1: Lubrication Schedule

LUBRICATION TABLE			
ITEM	DESCRIPTION	NO. OF LUBE POINTS	INTERVAL
1	HITCH PIVOT	2	DAILY
2	HITCH TRANSPORT PINS	3	DAILY
3	DRUM BEARINGS	2	DAILY

Table 4-1: Lubrication Table

Page Intentionally Blank

Hookup & Operation

The Speed Blade utilizes one hydraulic valve on the tractor, allowing it to raise and lower the grader blade.

The Speed Blade has the ability to:

- Raise to a clearance from bit to ground of 12 inches while lowering to a negative cut (6" maximum).
- An optional transport wheel kit may be purchased to raise the drum off the ground for short transport moves across job site.

Speed Blade Hitch Swing

The speed blades hitch will easily swing left or right against front of mainframe for transporting to different job site.

- Remove rear hitch brace pins of both hitch braces.
- Swing both hitch braces to front of hitch and secure the hitch brace pins into front holes of hitch.
- Swing hitch to left or right and secure hitch to side plate with the spring clip pin located in hitch brace working position (**See Figure 5-2.**)
- When all pins are secured in positions shown (**See Figure 5-1.**)the speed blade may be transported.
- When the speed blade is unloaded off truck the hitch will need to be swung back to the operating position (**See Figure 5-2.**)
- Remove the spring clip pin from the side plate and secure spring clip pin back in working position plate on inside of either hitch brace.
- Swing hitch straight forward.
- Remove front hitch brace pins of both hitch braces and swing both hitch braces back around and secure hitch brace pins back to plates on main frame.
- Be sure all pins are secured in positions shown (**See Figure 5-2.**)
- The speed blade is now ready to hook up to tractor.

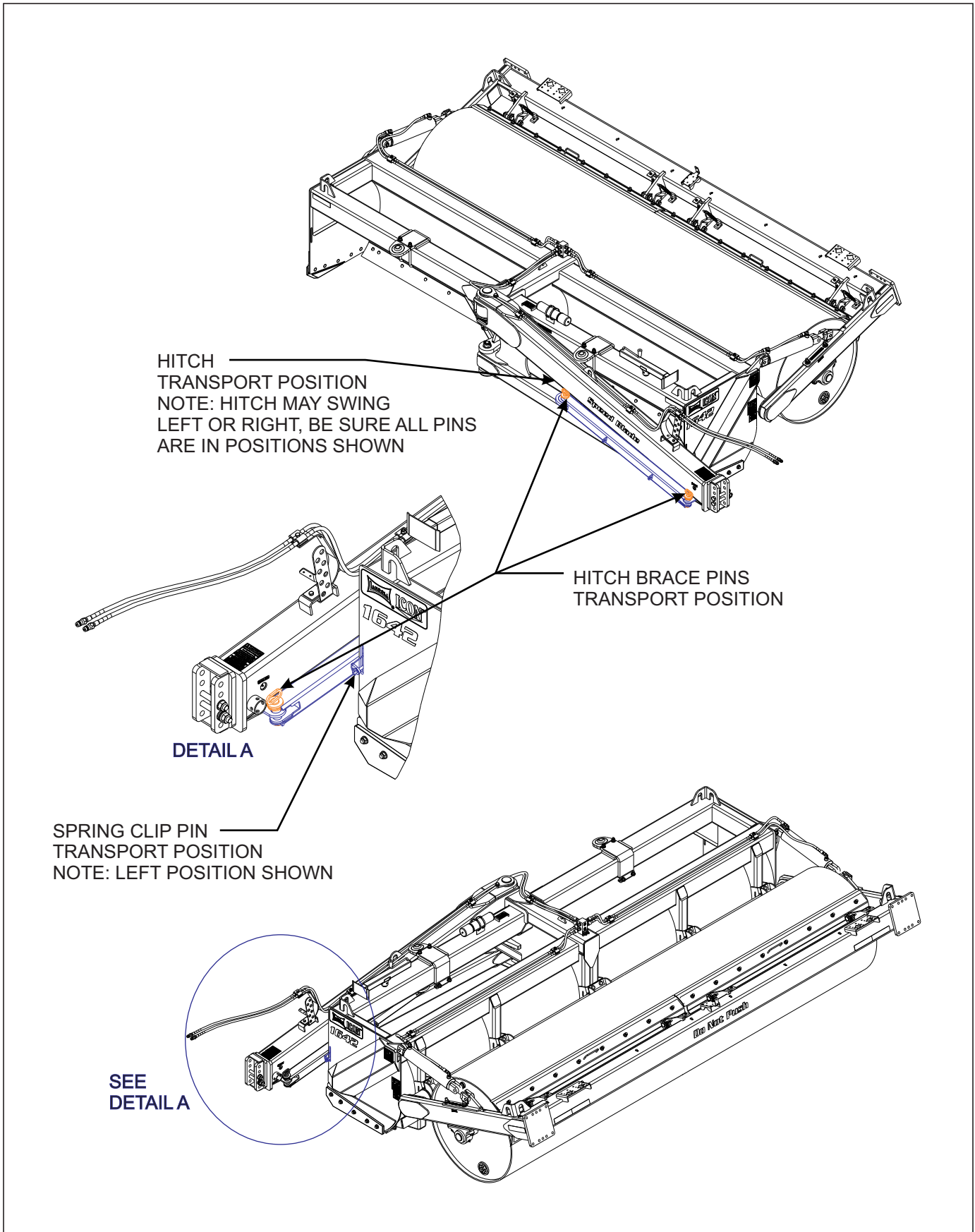


Figure 5-1: Hitch Swing (1 of 2)

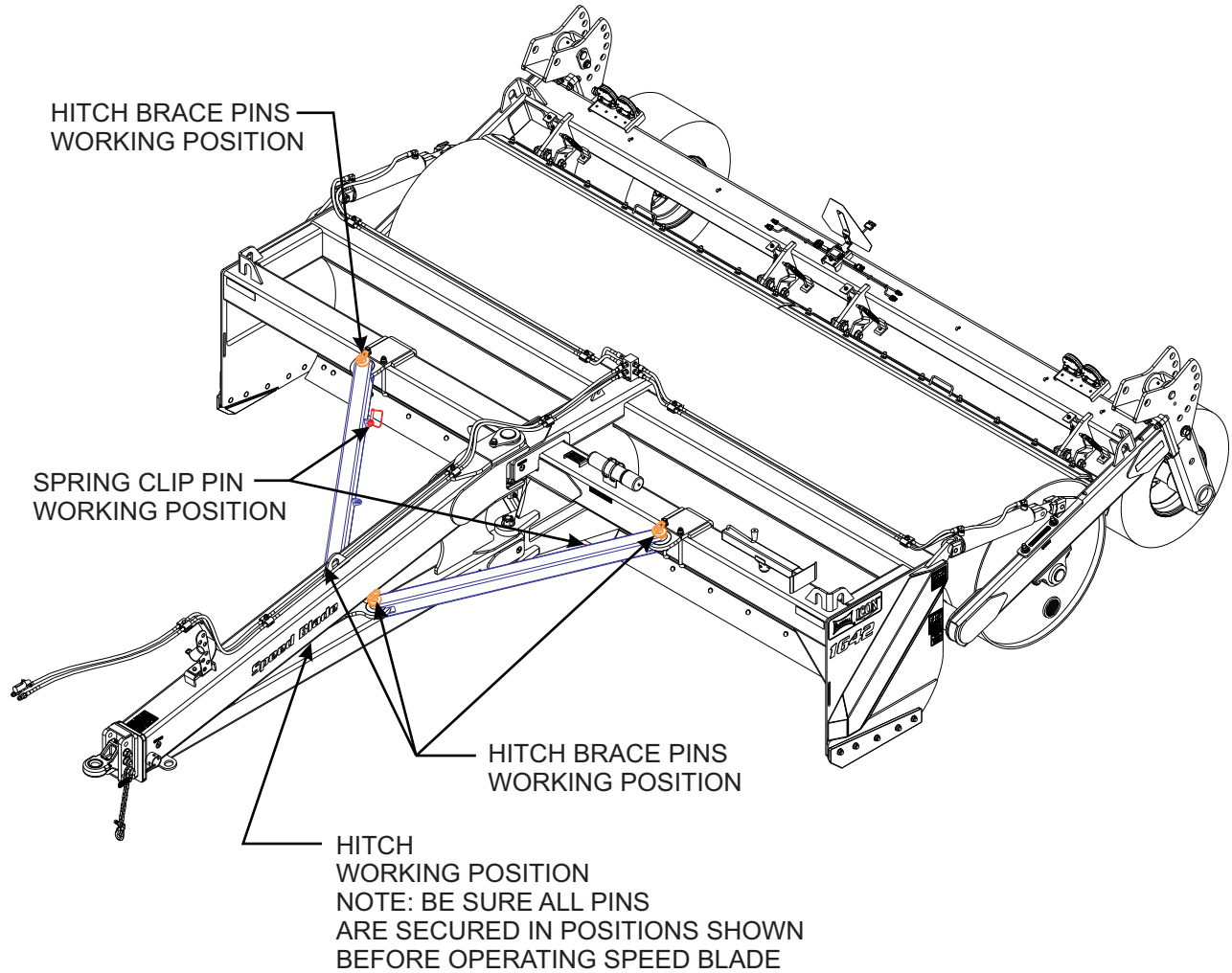


Figure 5-2: Hitch Swing (2 of 2)

Hookup Tractor to Speed Blade

Install hitch pin to secure to tractor. Attach safety chain to drawbar.

Hookup to the Remote

Hookup of the hydraulic hoses to the remote.



CAUTION

When digging in a populated area, it is recommended that a call be made to area utilities to establish the local of any buried pipes, lines, or structures. When digging in open area, research and know the local of any underground structures and objects.

Striking the blade and bit against surface or buried objects can cause damage to the grader and is considered as abuse to the machine.

NOTICE

Operator abuse will not be a warranty item.

Learning to Operate the Speed Blade

Be patient for the first few hours of learning to operate the Speed Blade. Time and experience will produce expert results. Any type of blade machine has the tendency to create a “washboard” effect if grading is done with too much speed. Slow down and do the job right. The second tendency of any blade machine is to side draft if the blade is cutting deep and enough power is applied. Practice centering the cut on the blade to balance the draft. Operating the Speed Blade at a higher speed may not get the job done quicker, and may provide less than quality results. It is also recommended that the weight box be filled prior to use. This will also aid in preventing side draft, and bounce.

Responsible operation and proper maintenance will provide many hours of expert results and a durable machine.



CAUTION

This machine is not intended for highway use, it should be used off road only.

If public roadway travel is necessary, be certain of regulations concerning width, lighting, and safety chain requirements.

Illustrated Parts List

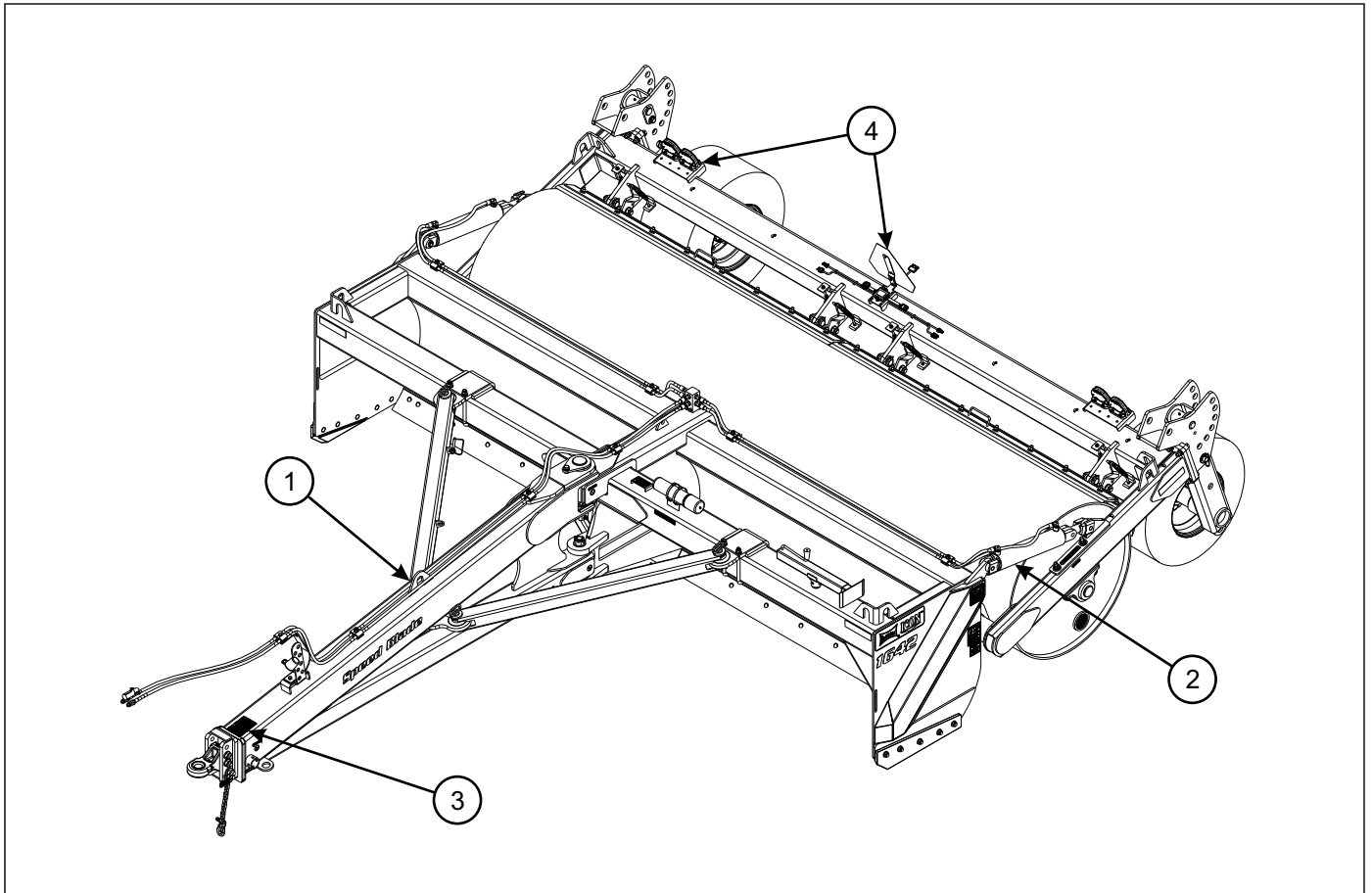


Figure 6-1: General Assembly

General Assembly

ITEM	PAGE NO.	DESCRIPTION	QTY.
1	6-1 - 6-11	SPEED BLADE ASSEMBLY	
2	6-12 - 6-15	HYDRAULIC ASSEMBLY	
3	6-17 - 6-19	DECALS	
4	6-20 - 6-21	TRANSPORT WHEEL & LIGHT KIT (OPTION)	

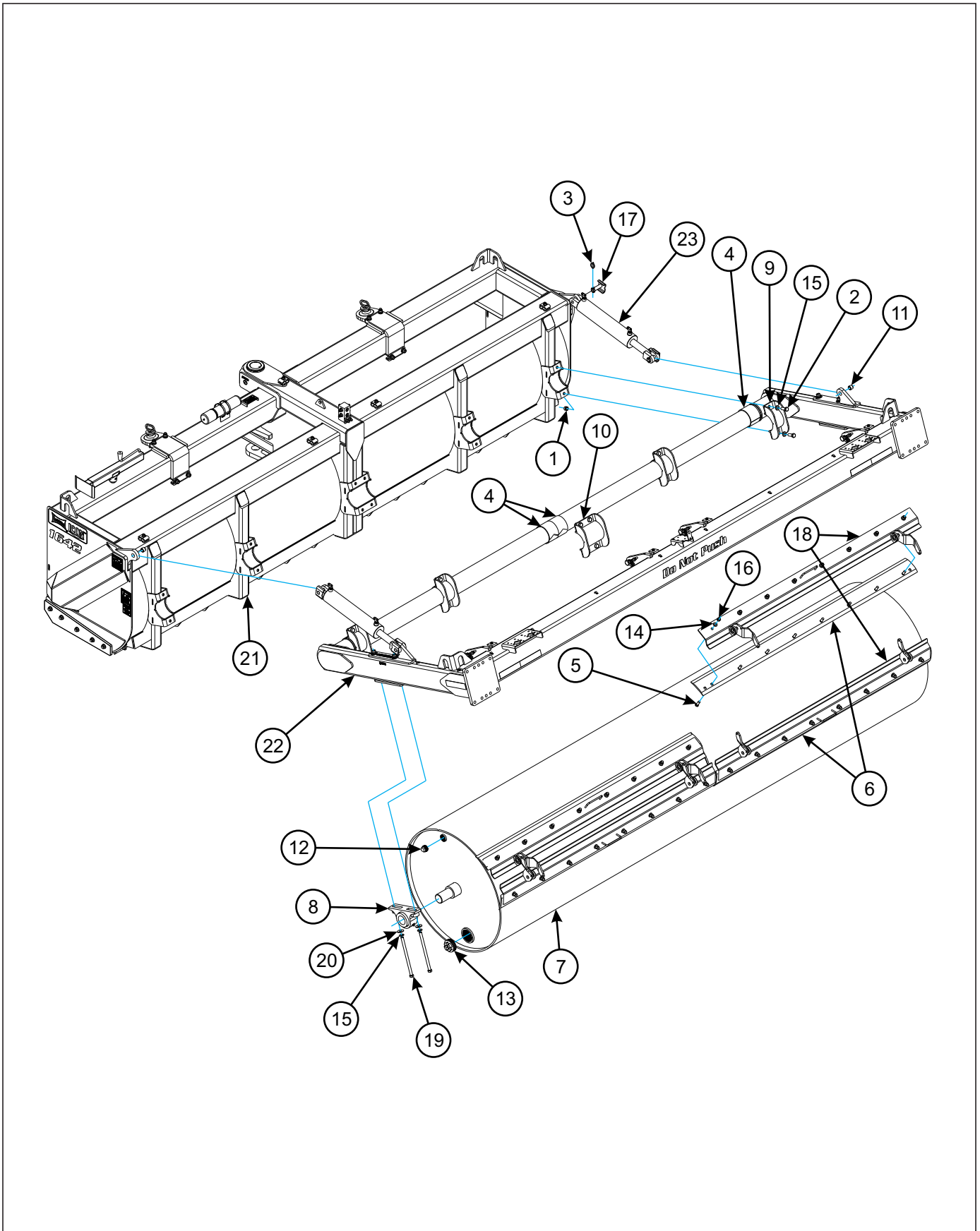


Figure 6-2: Drum Assembly

Drum Assembly

ITEM	PART NO.	DESCRIPTION	QTY.	
		1242 DRUM ASSEMBLY	*	
		1642 DRUM ASSEMBLY	*	
1	1-512-010005-15	NUT,HEX,SLFLKG GRB 3/4-10	8	12
2	1-654-010032-05	SCREW HEX CAP 3/4-10X2 GR8	8	12
3	134912	PIN, LYNCH 1/4 X 1-1/4	4	4
4	140519	BEARING, UHMW 4IN	4	6
5	172791	BOLT PLOW 5/8-11X2 GR 8	24	32
6	209419	SCRAPER BLADE, 6' DRUM	4	--
	180206	SCRAPER BLADE	--	4
7	209414	WLDMT, SMOOTH DRUM, 1242	1	--
	192291	WLDMT, SMOOTH DRUM, 1642	--	1
8	197508	BEARING 3" TAPERED PILLOW BLK	2	2
9	197541	WLDMT, BEARING CAP 4"	2	4
10	197542	WLDMT, BEARING CAP 8"	1	1
11	2-150-010008	BUSHING 1-1/4ODX1IDX1 STEEL	4	4
12	5000542	FTG-PLUG, PIPE 1-1/2" SQ	1	1
13	5000582	FTG - PLUG PIPE - 4" BARHEAD	1	1
14	622-3511-007	WASHER, FLAT 5/8 MIL-CARB SAE	24	32
15	622-3511-008	WASHER, FLAT 3/4 MIL-CARB SAE	12	16
16	63D10ER	NUT HEX 5/8-11 UNC GR8	24	32
17	GRA1600	PIN,CYLINDER - 1"	4	4
18	209418	WLDMT, DRUM SCRAPER MNT	4	--
	PTE0148	1200033 SMOOTH PACKER BLD WLD	--	4
19	197551	SCREW HX CP,3/4-10X13 GR8 ZP	4	4
20	1-861-010032-21	WASHER, FLAT 3/4 W ZP/CD	8	8
21	209412	WLDMT, MAINFRAME, 1242	1	--
	192288	WLDMT, MAINFRAME, 1642	--	1
22	209413	WLDMT, DRUM FRAME 1242	1	--
	192290	WLDMT, DRUM FRAME 1642	--	1
23	197507	CYLINDER, HYD CLEVIS 4 X 18 (SEE PAGE 6-15)	2	2

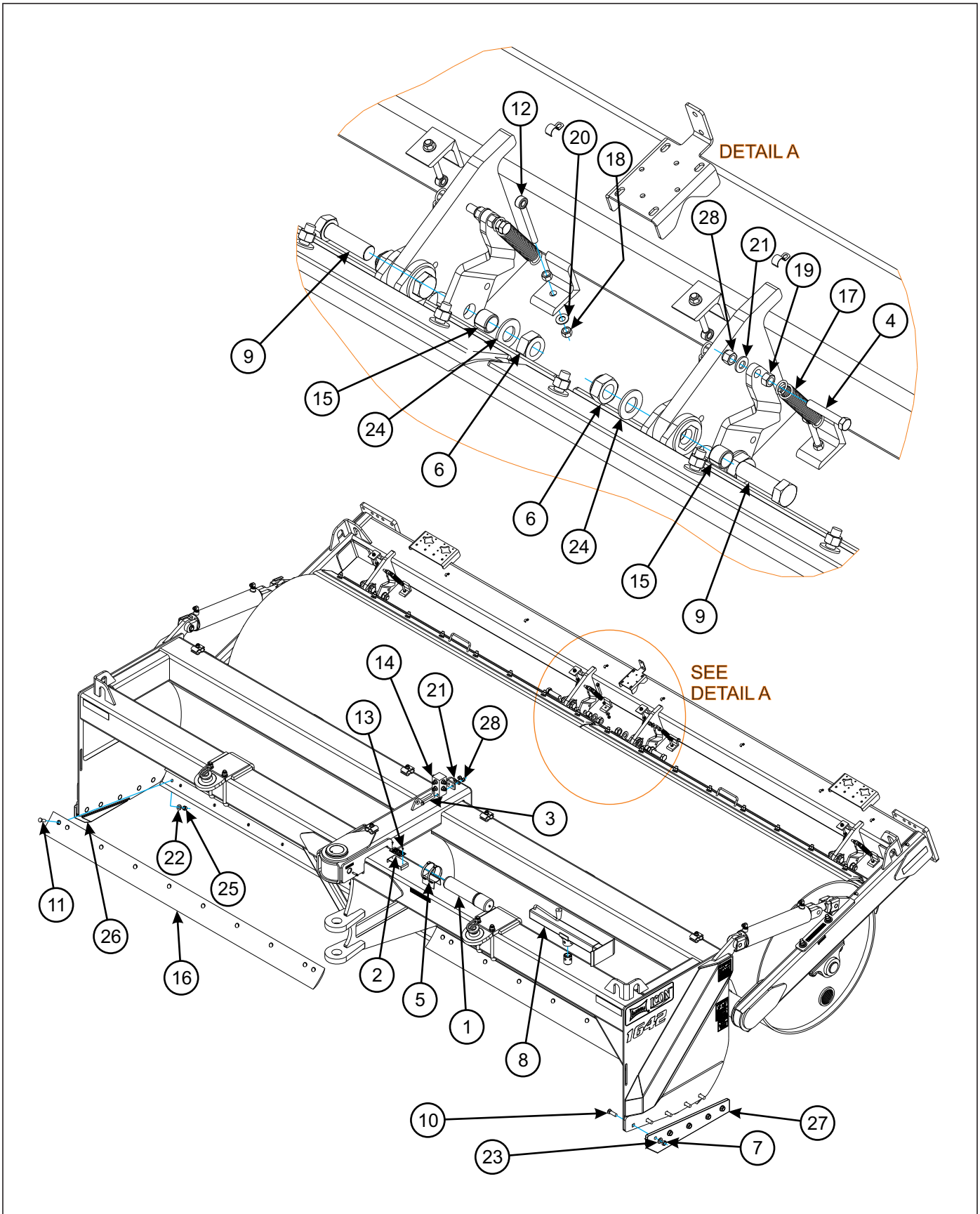


Figure 6-3: MainFrame Assembly

MainFrame Assembly

ITEM	PART NO.	DESCRIPTION	QTY.	
		1242 MAINFRAME ASSEMBLY	*	
		1642 MAINFRAME ASSEMBLY	*	
1	1-116-010019	BOX, MANUAL STORAGE	1	1
2	1-573-010006	PLACARD, NAME	1	1
3	1-654-010055-13	SCREW,HEX CAP,1/2-13UNCX4 GR5	2	2
4	1-654-010153-09	SCREW,HX 1/2-13UNCX3 FL THD	8	8
5	105-0093	HOSE CLAMP 4-1/2 IDEAL #5264	2	2
6	118652	NUT HX SLFLKG W/NYL 1-8 ZP	8	8
7	1404027	NUT JAM HEX HD 3/4-10 GR 8	10	10
8	140647	JACK, SIDE WIND 7000/8000 LB (SEE PAGE 6-11)	1	1
9	172579	SCREW HEX CAP 1-8UNCX3.5 GR8	8	8
10	172788	BOLT PLOW 3/4-10X2-1/2 GR8	10	10
11	172791	BOLT PLOW 5/8-11X2 GR 8	16	20
12	172932	ROD END EYE BOLT 3/8X3-3/4	8	8
13	184138	RIVET, BLIND .187 X 3/16 GRIP	2	2
14	2-474-010022	MANIFOLD ASSY,HYDR 8 HOSE	1	1
15	2-150-010008	BUSHING 1-1/4ODX1IDX1 STEEL	8	8
16	4000125	CUTTING EDGE - 6'DBC245600	2	--
	4000127	CUTTING EDGE - 8' GRADER BLADE	--	2
17	4001504	SPRING, 6" OAL 31/32 OD	8	8
18	61D6ER	NUT HEX HD 3/8-16UNC GR5 ZP	16	16
19	61D8ER	NUT HEX HD 1/2-13UNC GR5 ZP	8	8
20	622-3511-003	WASHER, FLAT 3/8 MIL-CARB SAE	8	8
21	622-3511-005	WASHER, FLAT 1/2 MIL-CARB SAE	15	15
22	622-3511-007	WASHER, FLAT 5/8 MIL-CARB SAE	16	20
23	622-3511-008	WASHER, FLAT 3/4 MIL-CARB SAE	10	10
24	622-3511-010	WASHER, FLAT 1" MIL-CARB SAE	8	8
25	63D10ER	NUT HEX 5/8-11 UNC GR8	16	20
26	ICO0206R	19C 18D RIGHT SIDE CUTTING EDG	1	1
27	ICO0206L	19C 18D LEFT SIDE CUTTING EDGE	1	1
28	W915665-4	NUT, 1/2-13 NYLOCK GR 5 ZP	15	15

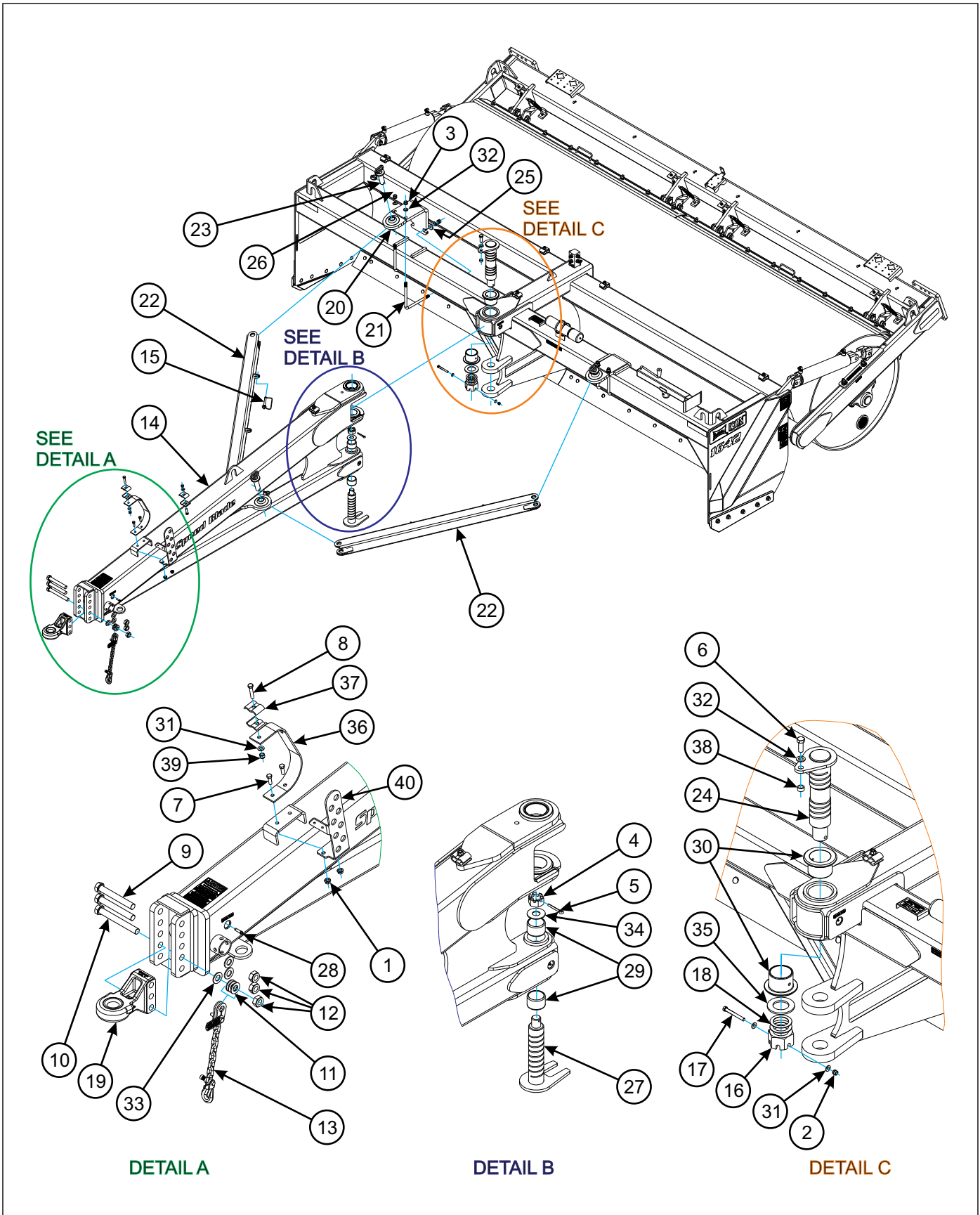


Figure 6-4: Hitch Assembly

Hitch Assembly

ITEM	PART NO.	DESCRIPTION	QTY.
1	1-510-010003-09	NUT,1/2-13 FLANGE HD,SERRATED	2
2	1-512-010005-09	NUT,HEX,SLFLKG, 1/2-13 GRB	1
3	1-512-010005-15	NUT,HEX,SLFLKG GRB 3/4-10	8
4	1-516-010001-27	NUT,HX SLOT 1-1/2-6 ZP	1
5	1-557-010362-87	PIN, COTTER 3/8X2-1/2	1
6	1-654-010032-05	SCREW HEX CAP 3/4-10X2 GR8	1
7	1-654-010055-03	SCREW,HEX CAP,1/2-13UNCX1-1/2	2
8	1-654-010055-07	SCREW HX CP 1/2-13UNCX2-1/2	1
9	1-654-010125-20	SCREW,1-8UNCX7-1/2 HX CP GR8	2
10	1-654-010125-22	SCREW HX CP 1-8UNCX8-1/2G8ZP	1
11	1-861-010032-24	WASHER FL 1IN NARROW ZP	3
12	118652	NUT HX SLFLKG W/NYL 1-8 ZP	3
13	141434	SAFETY CHAIN 21,000LB	1
14	192289	WLDMT, HITCH, 1642	1
15	155971	PIN, HARROW ADJ	2
16	172892	NUT HX SLOT 2-1/2-4 ZP	1
17	179259	SCREW,HX CAP,1/2-13X4-1/2GR8	1
18	184125	WASHER, GANG SHAFT	2
19	189451	HITCH, BALL CAT IV 3-HOLE (SEE PAGE 6-8)	1
20	197518	MOUNT WLDMT HITCH BRACE	2
21	197520	L-BOLT, 3/4 X 10-3/4 X 10-3/4	4
22	197521	WLDMT, HITCH BRACE	2
23	197525	PIN, HITCH BRACE, 1-1/2"	4
24	197530	PIN, HITCH HINGE, 3-1/2"	1
25	197557	PLATE, HITCH BRACE	2
26	2-557-010417	PIN, LYNCH CAT III	4
27	202254	PIN WLDMT HITCH HINGE 2-1/2"	1
28	4000777	ZERK,1/8 STR 1-3/4 LONG H1669	5
29	4000902	BUSHING, 300251200	2
30	4001271	BUSHING 4 OD-3.5 ID SM.FLANGED	2
31	622-3511-005	WASHER, FLAT 1/2 MIL-CARB SAE	12
32	622-3511-008	WASHER, FLAT 3/4 MIL-CARB SAE	9
33	622-3511-010	WASHER, FLAT 1" MIL-CARB SAE	3
34	622-3511-014	WASHER FLAT 1-1/2 MIL-CARB SAE	1
35	622-3511-018	WASHER FLAT 2-1/2 MIL-CARB SAE	1
36	ICO0004	HOSE STAND 1/4x2.5x24	1
37	IICO0224	19C 18D #2 SIDE PIPE CLAMP	16
38	ICO1118	PIN SPACER, ϕ .780" X 9/16"	1
39	W915665-4	NUT, 1/2-13 NYLOCK GR 5 ZP	10
40	202230	PLATE, HYD HOSE HOLDER	1

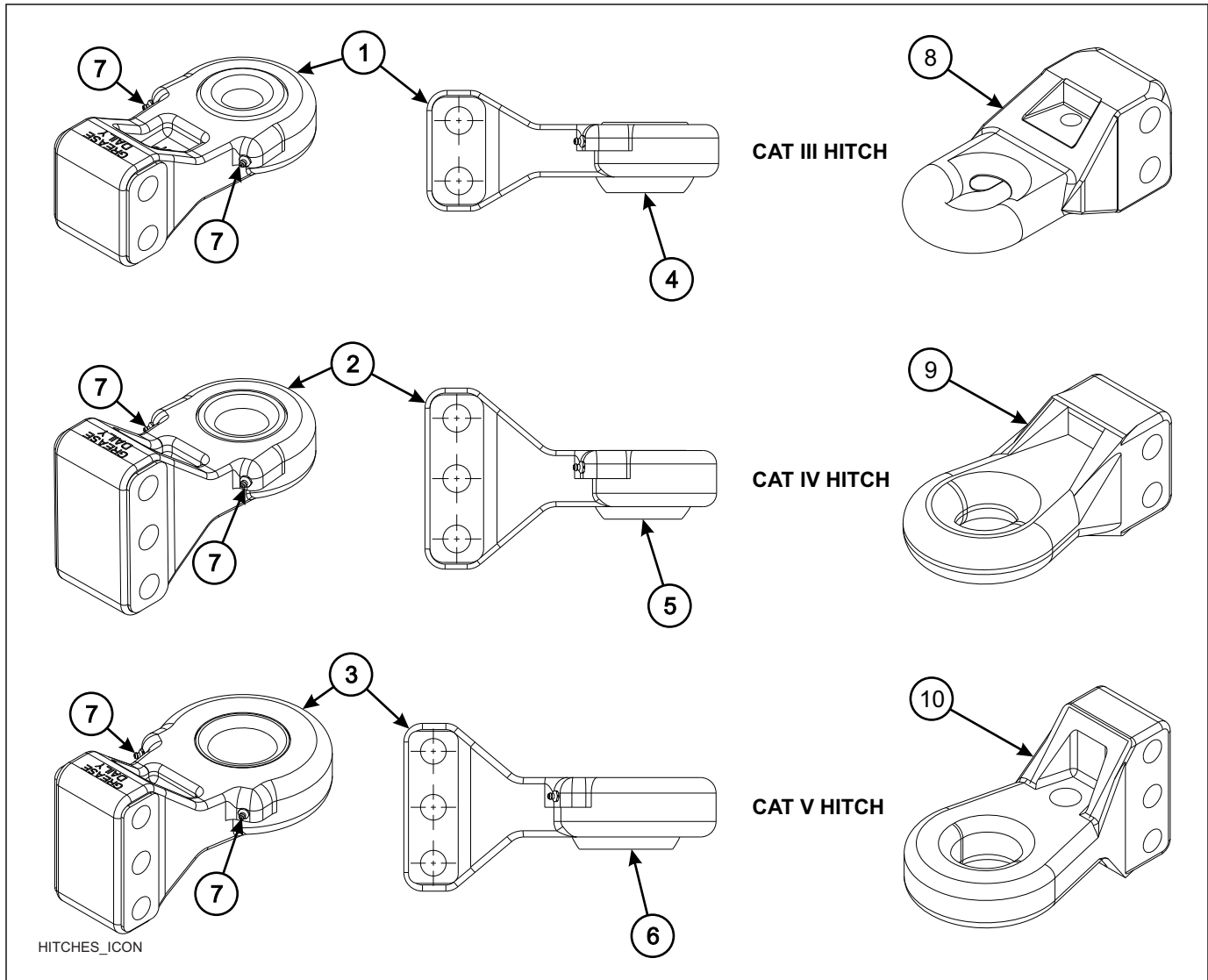


Figure 6-5: Hitch Assemblies

Hitch Assemblies

ITEM	PAGE NO.	DESCRIPTION	QTY.
1	177030	HITCH, BALL CAT III	1
2	189451	HITCH, BALL CAT IV, 3-HOLE	1
3	177032	HITCH, BALL V	1
4	189453	BUSHING, SPHERICAL, 1-1/2" ID (Standard)	1
	189454	BUSHING, SPHERICAL 2 ID	1
5	189454	BUSHING, SPHERICAL, 2" ID (Standard)	1
	189453	BUSHING, SPHERICAL 1-1/2 ID	1
6	189468	BUSHING, SPHERICAL, 2-3/4" ID (Standard)	1
	189467	BUSHING, SPHERICAL 2 ID	1
7	1-298-010001-01	ZERK	1
8	206989	HITCH ASSY CAT III PINTLE ICON	1
9	206990	HITCH ASSY CAT IV PINTLE ICON	1
10	206991	HITCH ASSY CAT V PINTLE ICON	1

Page Intentionally Blank

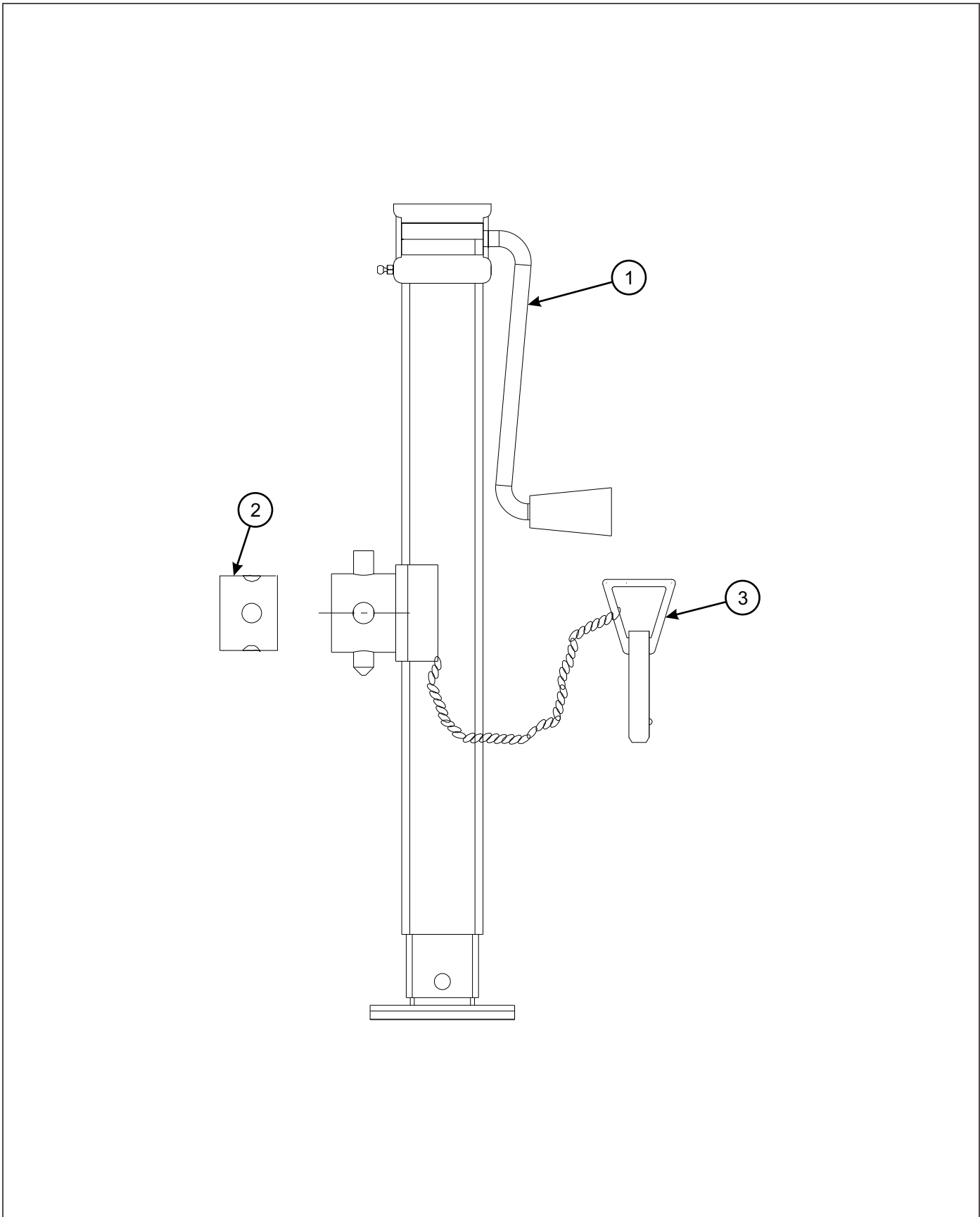


Figure 6-6: 7,000 Lb. Sidewind Jack Assembly

7,000 Lb. Sidewind Jack Assembly

ITEM	PART NO.	DESCRIPTION	QTY.
	140647	JACK, SIDE WIND 7000/8000 LB	
1	500171	HANDLE FOR JACK	1
2	142194	5/8" PIN	1
3	141250	TUBE, RD, JACK MOUNT (WELD ONLY)	1

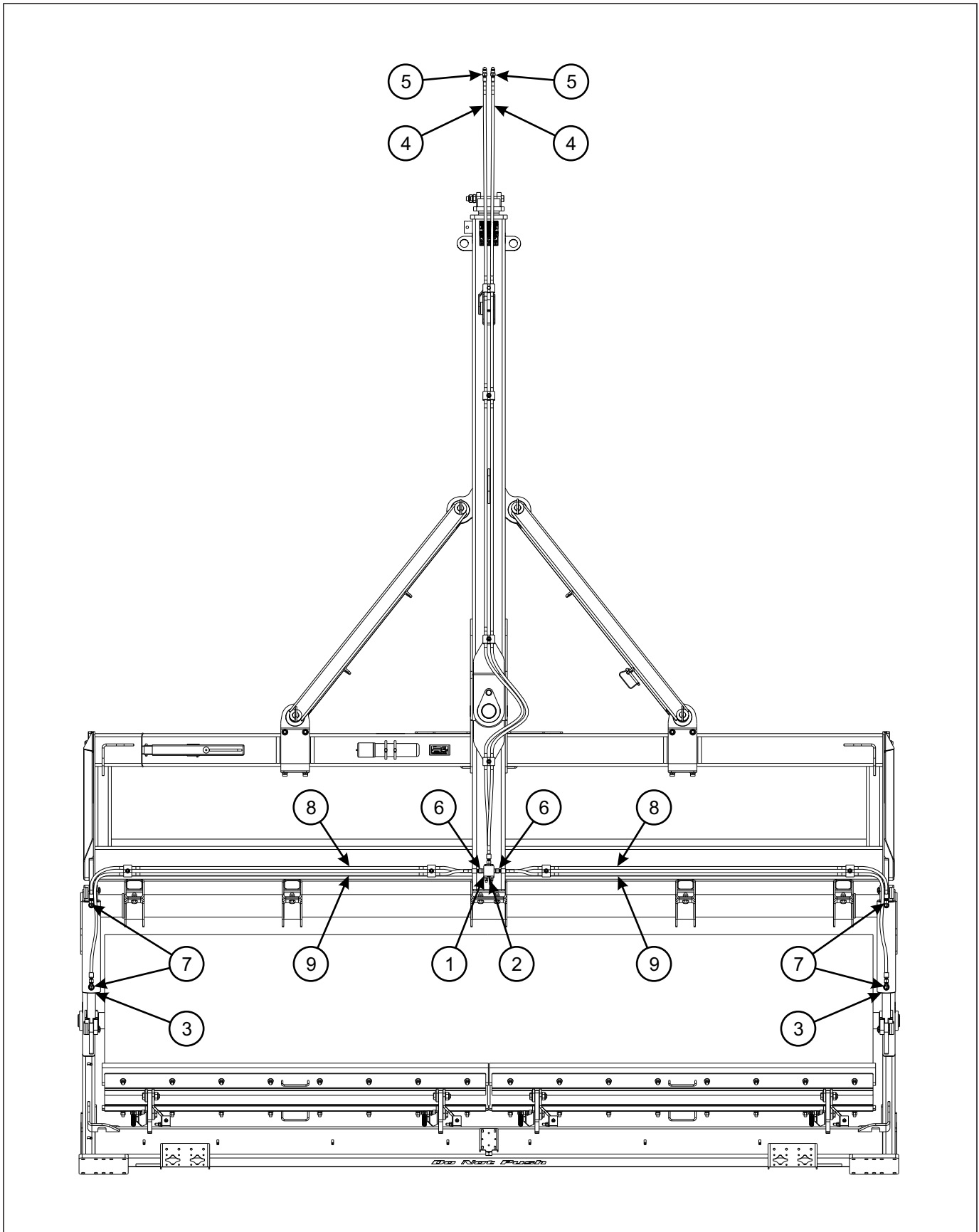


Figure 6-7: Hydraulic Assembly

Hydraulic Assembly

ITEM	PART NO.	DESCRIPTION	QTY.	
	209416	KIT, 1242 HYD HOSE	*	
	197549	KIT, 1642 HYD HOSE		*
	197548	KIT, 1642 HYD FITTINGS		*
1	2-474-010022	MANIFOLD ASSY, HYDR 8 HOSE	1	1
2	121029	PLUG #8 SAE M O-R BOSS HX SKT	2	2
3	197507	CYLINDER, HYD CLEVIS 4 X 18 (SEE PAGE 6-15)	2	2
4	194696	HOSE ASSY, 3/8X222 #8JICX#8OR	2	2
5	141828	COUPLER,MALE 3/4-16 O-RING	2	2
6	202702-8-8S	ADAPTER #8 O-RING TO #8 TUBE	6	6
7	2062-8-8S	ADAPTER, 90, #8 O-RING-TUBE	4	4
8	71508987	HOSE ASSY 3/8X86",#8 JIC SWVL	2	--
	117916	HOSE ASSY 3/8X110",#8 JIC SWVL	--	2
9	1413183	HOSE ASSY 3/8X103.25" #8JIC SWV	2	--
	137599	HOSE ASSY 3/8X126.25" #8JIC SWV	--	2

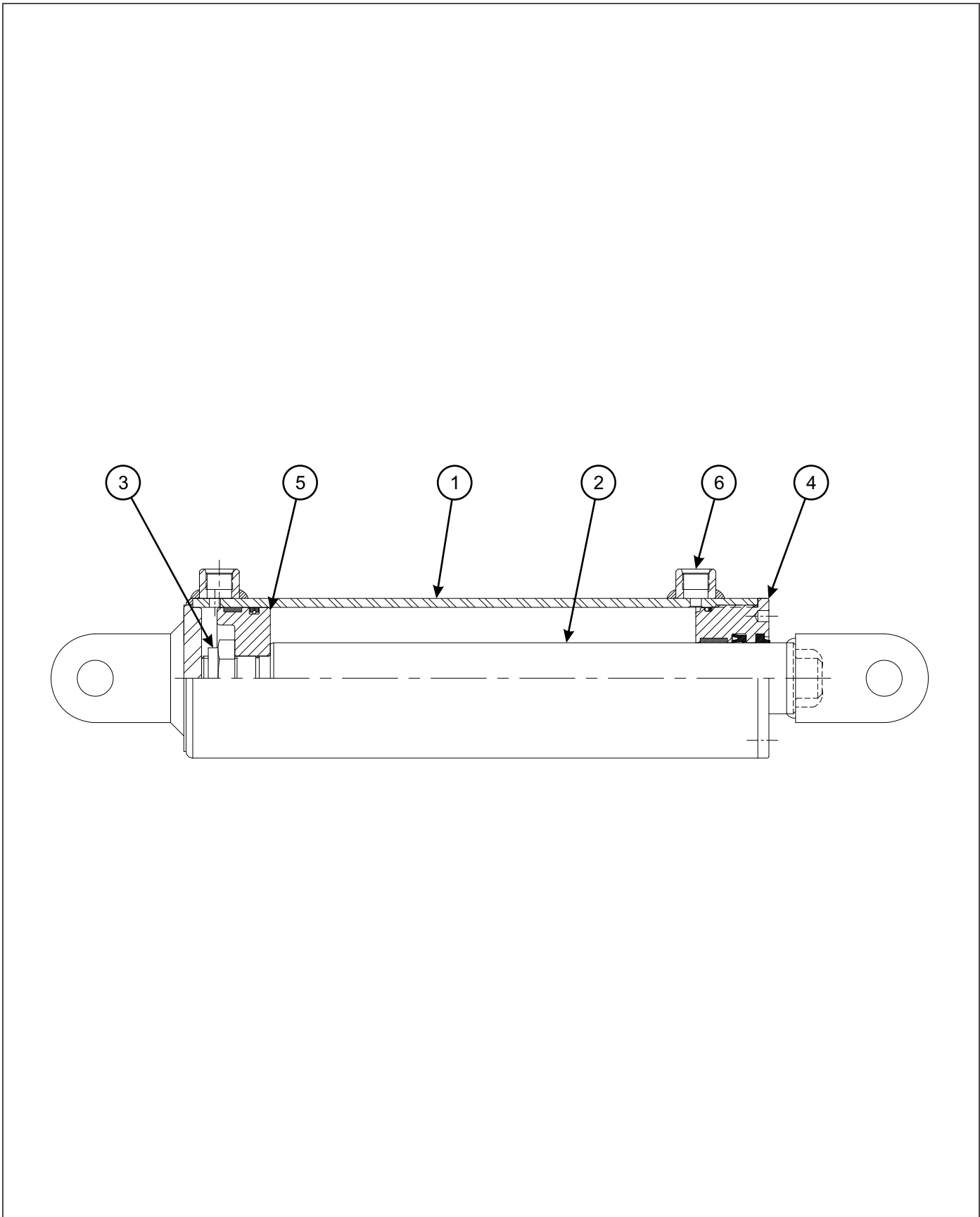


Figure 6-8: Hydraulic Cylinder, 4 x 18

Hydraulic Cylinder, 4 X 18

ITEM	PART NO.	DESCRIPTION	QTY.
	197507	HYDRAULIC CYLINDER, 4 X 18	
1	-----	CASE WELDMENT	1
2	-----	ROD	1
3	-----	NUT, LOCK THICK CLR 1-1/4-12 UNF	1
4	180904	HEAD	1
5	-----	PISTON	1
6	-----	PLUG, PLASTIC #8 SAE SHIPPING	2
	180905	SEAL KIT	1

Page Intentionally Blank

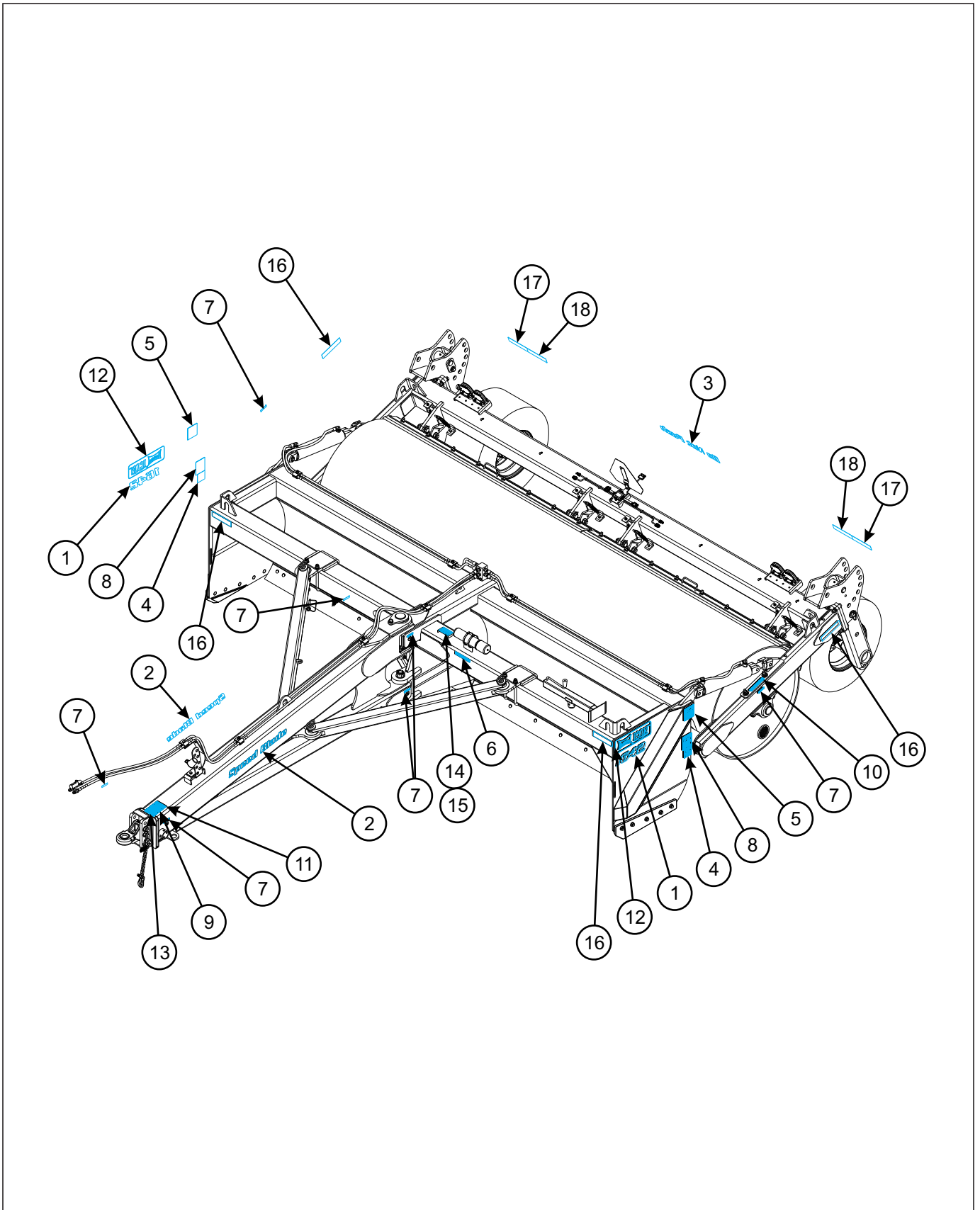


Figure 6-9: Decal Locations (1 of 2)

1242
1642

①

Speed Blade

②

Do Not Push

③



④



⑤



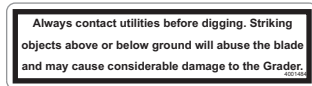
⑥

Grease Daily
4000938

⑦



⑧



⑨



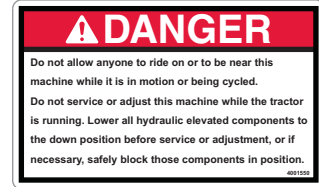
⑩



⑪



⑫



⑬



⑭



⑮



⑯

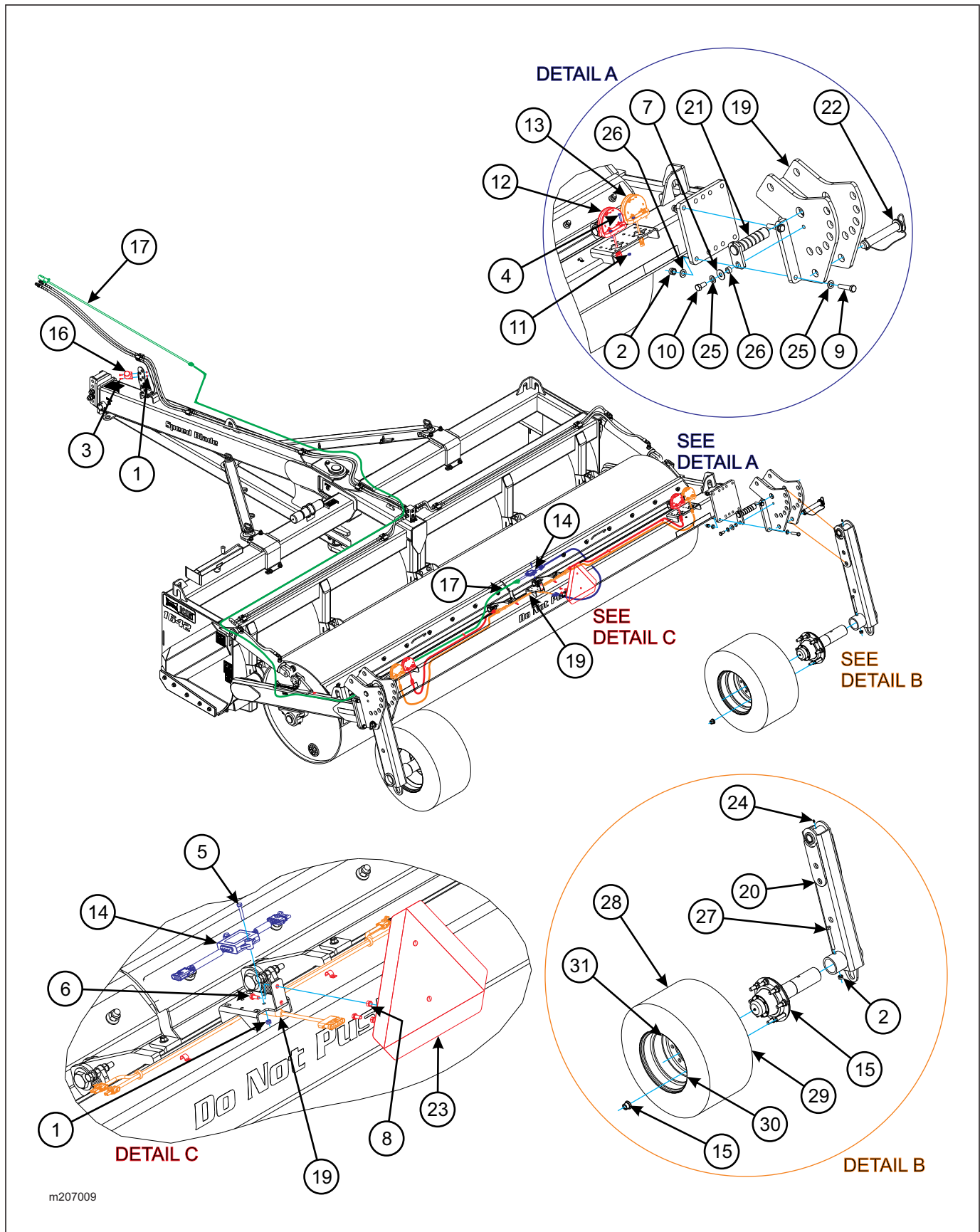


⑰

Figure 6-10: Decal Arrangements (2 of 2)

Decal Locations & Arrangements

ITEM	PART NO.	DESCRIPTION	QTY.
	209417	KIT, 1242 DECAL	
	197550	KIT, 1642 DECAL	
1	197552	DECAL 1242 MODEL	2
	209431	DECAL 1642 MODEL	2
2	197553	DECAL, SPEED BLADE	2
3	197554	DECAL, DO NOT PUSH	1
4	4000372	DECAL WARN MOVING PARTS 3-1/2	2
5	4000931	DECAL "WARNING" HIGH PRESSURE	2
6	4000935	DECAL "SAFETY/OPERATIONS/PARTS	1
7	4000938	DECAL "GREASE DAILY"	7
8	4000940	DECAL "DANGER" PINCHING/CRUSHI	2
9	4001484	DECAL "ALWAYS CONTACT UTILITIE	1
10	4001500	DECAL, FILL WT. BOX WITH SAND	1
11	4001516	DECAL-OFF ROAD ONLY	1
12	4001522	DECAL, LANDOLL/ICON, 5-1/2X17	2
13	4001550	DECAL, DANGER NO RIDING	1
14	1-573-010006	PLACARD, NAME	1
15	184138	RIVET, BLIND.187 X 3/16 GRIP	2
16	528934	REFLECTOR - YELLOW	4
17	528933	REFLECTOR - RED	2
18	528938	STRIPE, ORANGE	2



m207009

Figure 6-11: Transport Wheel Assembly (Option)

Transport Wheel Assembly (Option)

ITEM	PART NO.	DESCRIPTION	QTY.
	207009	KIT, 1642 WHEEL, MANUAL	
1	1-512-010005-01	NUT,HEX,SLFLKG GRB 1/4-20	4
2	1-512-010005-15	NUT,HEX,SLFLKG GRB 3/4-10	10
3	1-654-010047-06	SCREW,HX CP 1/4-20UNCX1 GR5	2
4	1-654-010047-07	SCREW,HX CP 1/4-20UNCX1-1/4G5	16
5	1-654-010047-08	SCREW HX CP,1/4-20UNCX1-1/2G5	2
6	1-654-010049-03	SCREW HX CP 5/16-18UNCX3/4GR5	2
7	1-861-010032-21	WASHER, FLAT 3/4 W ZP/CD	2
8	104032	NUT,HX SLF-LKG W/MYL 5/16-18	2
9	105408	SCREW HXCP,3/4-10X3-1/2 GR8	8
10	108705	SCREW,HEXCAP,3/4-10X1-1/2 GR8	2
11	142779	NUT,FLANG SERRATED 1/4-20	16
12	174435	LAMP, AG RED SINGLE LED	2
13	174436	LAMP, AG AMBER SINGLE LED	2
14	174437	MODULE, AG FLASHER CONTROL	1
15	191974	HUB/SPINDLE ASSY, 4" W/ZERK (SEE PAGE 6-23)	2
16	2-368-010287	HARNESS, STOR-A-WAY	1
17	200345	FRONT HARNESS,WRN LIGHTS, 50'	1
18	200347	REAR HARNESS, WARN LIGHT, 6'	1
19	207010	WLDMT, 1642 WHEEL MNT BRKT	2
20	207011	WLDMT, 1642 WHEEL MNT	2
21	207021	PIN, WHEEL HINGE, \varnothing 2"	2
22	207023	HITCH PIN, \varnothing 1-1/2 X 8, W/CHAIN	2
23	2P151	SMV W/BACKET	1
24	5000	ZERK FITTING 1/8NPT	2
25	622-3511-008	WASHER, FLAT 3/4 MIL-CARB SAE	16
26	ICO1118	PIN SPACER, \varnothing .780" X 9/16"	2
27	W908409-4	SCR 3/4-10X6 HEX HD CAP	2
28	209447	TIRE & WHEEL ASSY, 480/45R17 (INCLUDES ITEMS 29-31)	2
29	204386	TIRE, BKT VF 480/45R17	2
30	209448	WHEEL, 17X16, 8 BOLT	2
31	TR575	VALVE STEM TUBELESS TIRE	2

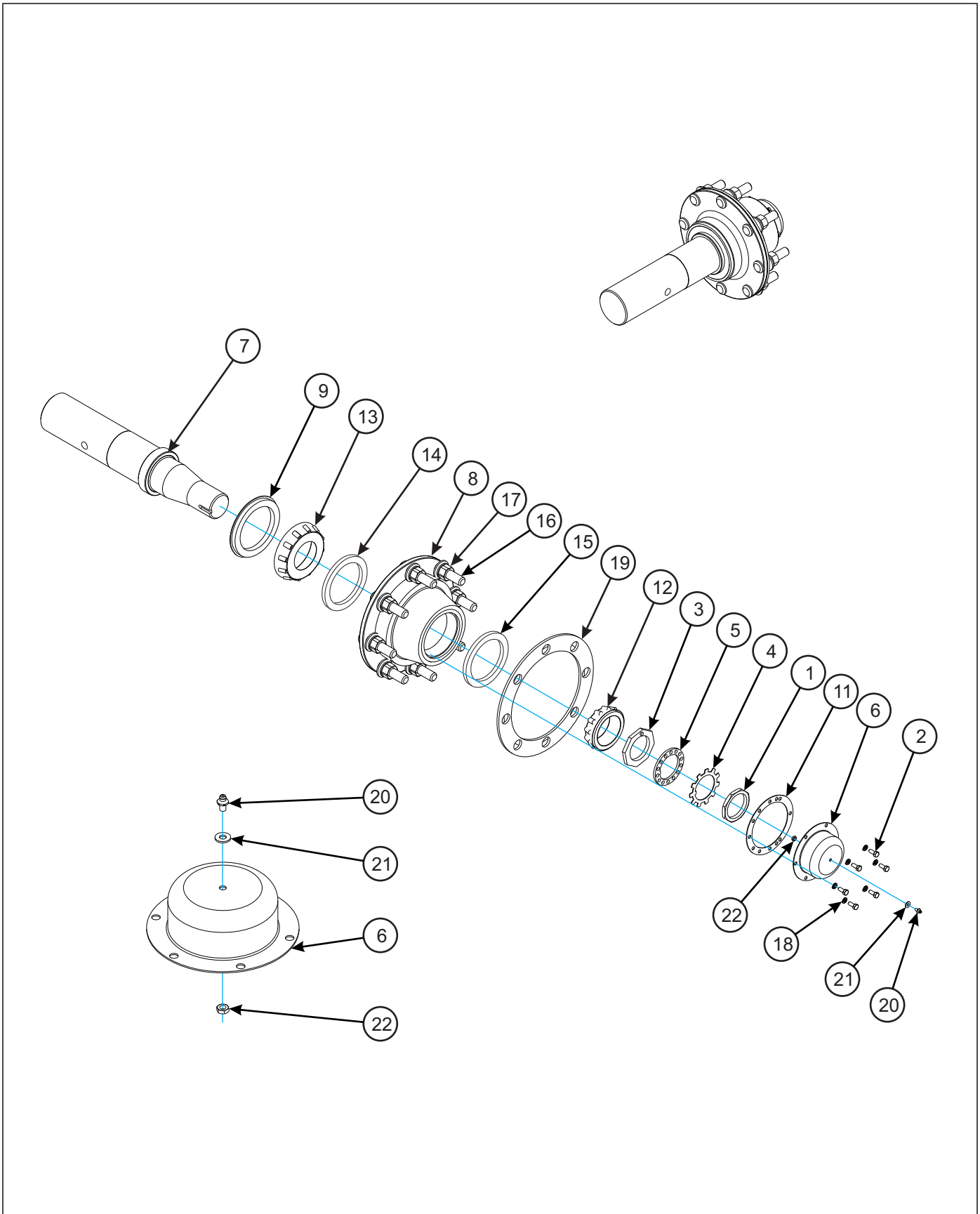


Figure 6-12: Hub/Spindle Assembly 191974 (Option)

Hub/Spindle Assembly 191974 (Option)

ITEM	PART NO.	DESCRIPTION	QTY.
	191974	HUB/SPINDLE ASSY, 4" W/ZERK	
1	006-115-00	NUT, OUTER SPINDLE	1
2	1-654-010049-03	SCREW, HEX HEAD CAP 5/16-18 X 3/4 GR5	6
3	103103-002	INNER SPINDLE NUT	1
4	105106	STAR LOCKWASHER	1
5	105107	LOCK WASHER	1
6	191976	HUBCAP W/ 1/4 HOLE	1
7	167649	SPINDLE AND SLEEVE ASSEMBLY, 4 X 22-1/4	1
8	164557	HUB W/CUPS, 8 BOLT (INCL. ITEMS 14-17)	1
9	184769	SEAL, PURGABLE 6 OD X 4-4/8 ID	1
11	3067	GASKET, HUB	1
12	HM212049	OUTER BEARING A19S	1
13	HM218248	INNER BEARING	1
14	HM218210	INNER BEARING CUP	1
15	HM212011	OUTER BEARING CUP	1
16	101162	STUD BOLT (8 BOLT)	8
17	179933	LUG NUT (8 BOLT)	8
18	1-861-010034-10	WASHER, SPLIT LOCK 5/16	6
19	167586	SPACER, WHEEL	1
20	5013*	ZERK, FITTING 1/4-28SAEX11/16	1
21	1-861-010032-06	WASHER, FLAT 1/4 N ZP/CD	1
22	1404013	NUT JAM HEX HD GR 5 1/4-28	1

Numerical Index

Numerics

006-115-00	6-23	1-512-010005-15	6-3, 6-7, 6-21
101162	6-23	1-516-010001-27	6-7
103103-002	6-23	1-557-010362-87	6-7
104032	6-21	155971	6-7
105-0093	6-5	1-573-010006	6-5, 6-19
105106	6-23	164557	6-23
105107	6-23	1-654-010032-05	6-3, 6-7
105408	6-21	1-654-010047-06	6-21
108705	6-21	1-654-010047-07	6-21
1-116-010019	6-5	1-654-010047-08	6-21
117916	6-13	1-654-010049-03	6-21, 6-23
118652	6-5, 6-7	1-654-010055-03	6-7
121029	6-13	1-654-010055-07	6-7
134912	6-3	1-654-010055-13	6-5
137599	6-13	1-654-010125-20	6-7
1404013	6-23	1-654-010125-22	6-7
1404027	6-5	1-654-010153-09	6-5
140519	6-3	167586	6-23
140647	6-5, 6-11	167649	6-23
141250	6-11	172579	6-5
1413183	6-13	172788	6-5
141434	6-7	172791	6-3, 6-5
141828	6-13	172892	6-7
142194	6-11	172932	6-5
142779	6-21	174435	6-21
1-510-010003-09	6-7	174436	6-21
1-512-010005-01	6-21	174437	6-21
1-512-010005-09	6-7	179259	6-7
		179933	6-23

NUMERICAL INDEX

180206	6-3	202254	6-7
180904	6-15	202702-8-8S	6-13
180905	6-15	204386	6-21
184125	6-7	2062-8-8S	6-13
184138	6-5, 6-19	207009	6-21
184769	6-23	207010	6-21
1-861-010032-06	6-23	207011	6-21
1-861-010032-21	6-3, 6-21	207021	6-21
1-861-010032-24	6-7	207023	6-21
1-861-010034-10	6-23	209412	6-3
189451	6-7	209413	6-3
191974	6-21, 6-23	209414	6-3
191976	6-23	209416	6-13
192288	6-3	209417	6-19
192289	6-7	209418	6-3
192290	6-3	209419	6-3
192291	6-3	209431	6-19
194696	6-13	209447	6-21
197507	6-3, 6-13, 6-15	209448	6-21
197508	6-3	2-150-010008	6-3, 6-5
197518	6-7	2-368-010287	6-21
197520	6-7	2-474-010022	6-5, 6-13
197521	6-7	2-557-010417	6-7
197525	6-7	2P151	6-21
197530	6-7	3067	6-23
197541	6-3	4000125	6-5
197542	6-3	4000127	6-5
197548	6-13	4000372	6-19
197549	6-13	4000777	6-7
197550	6-19	4000902	6-7
197551	6-3	4000931	6-19
197552	6-19	4000935	6-19
197553	6-19	4000938	6-19
197554	6-19	4000940	6-19
197557	6-7	4001271	6-7
200345	6-21	4001484	6-19
200347	6-21	4001500	6-19
202230	6-7	4001504	6-5

4001516	6-19
4001522	6-19
4001550	6-19
5000	6-21
5000542	6-3
5000582	6-3
500171	6-11
5013	6-23
528933	6-19
528934	6-19
528938	6-19
61D6ER	6-5
61D8ER	6-5
622-3511-003	6-5
622-3511-005	6-5, 6-7
622-3511-007	6-3, 6-5
622-3511-008	6-3, 6-5, 6-7, 6-21
622-3511-010	6-5, 6-7
622-3511-014	6-7
622-3511-018	6-7
63D10ER	6-3, 6-5
71508987	6-13

G

GRA1600	6-3
---------	-----

H

HM212011	6-23
HM212049	6-23
HM218210	6-23
HM218248	6-23

I

I	6-7
ICO0004	6-7

ICO0206L	6-5
ICO0206R	6-5
ICO1118	6-7, 6-21

P

PTE0148	6-3
---------	-----

T

TR575	6-21
-------	------

W

W908409-4	6-21
W915665-4	6-5, 6-7

Document Control Revision Log:

Date	Form #	Improvement(s): Description and Comments
04/01/2017	F-923	Initial Release
04/19/2017	F-923-0417	New Manual
11/16/2018	F-923-1117	Updated Manual



Intertek

Equipment from Landoll Company, LLC is built to exacting standards ensured by ISO 9001 registration at all Landoll manufacturing facilities.

Model 1242/1642 Speed Blade Service/Parts Manual

Re-Order Part Number F-923-1117

LANDOLL COMPANY, LLC

1900 North Street

Marysville, Kansas 66508

(785) 562-5381

800-428-5655 ~ WWW.LANDOLL.COM



Copyright 2017. Landoll Company, LLC

“All rights reserved, including the right to reproduce this material or portions thereof in any form.”

Scan to go to www.landoll.com

