

BRENT

CORNER-AUGER
GRAIN CARTS



678XL • 678 • 576

When you're ready **for the best**



GRAIN CARTS:

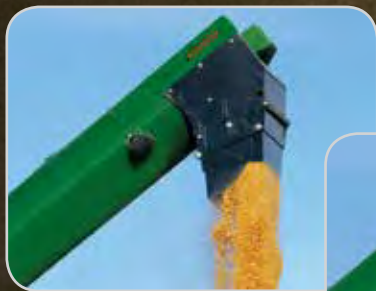
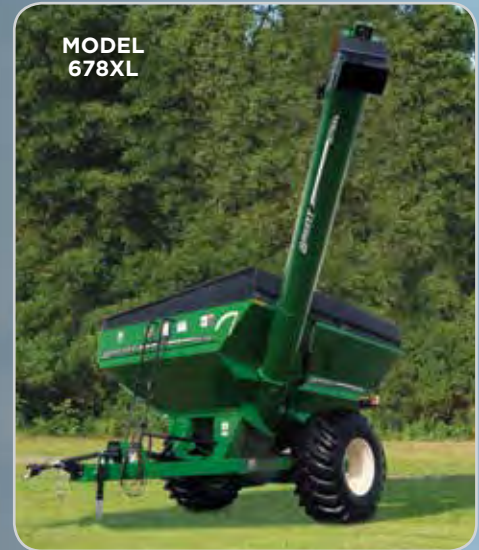
THE RIGHT WAY TO HARVEST

Mid-size carts with large-size performance

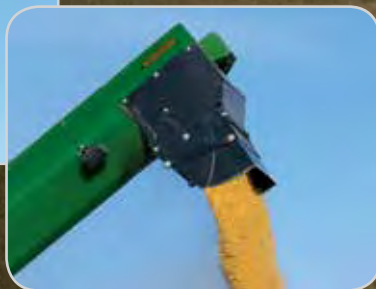
Corner auger; 630- or 550-bushel capacity; single high-flotation tires or duals. Regardless of your needs, the right way to harvest is with a Brent® grain cart.

Brent grain cart models 678 and 576 feature a corner-auger design for 100 percent unloading visibility from the tractor cab. The 678XL features an extra-long auger for added unloading height and reach.

By keeping the combine running in the field and unloading into your Brent grain cart, you'll improve harvesting efficiency by 30 percent or more.



Targetable downspout



Exclusive 45° gearbox with 1 3/4" output shaft

BRENT CORNER AUGER: MODELS 678XL, 678 & 576

- High-capacity grain handling in mid-size packages
 - The Brent grain cart models 678XL and 678 boast a 630-bushel capacity with a 17"-diameter unloading auger for an unloading speed of 400 bushels per minute
 - The Brent grain cart model 576 steps up with a 550-bushel capacity and 14"-diameter unloading auger for an unloading speed of 300 bushels per minute
- A fully recessed auger-intake sump, graphite-coated interior surfaces and steep-sloped sides ensure fast and complete unloading
- A spring-loaded top bearing and computer-balanced top and bottom augers for smoother, more quiet operation
- The 5/16"-thick super-edge flighting with extra-thick edges puts more steel where the greatest wear occurs for extended auger life
- A quick-couple, 1,000 rpm PTO that's equipped with a 4-disc slip clutch to protect driveline components
- The hydraulic auger-locking system results in a leak-free auger joint
- The 45° gearbox and 1 3/4" diameter full-length output shaft deliver industry-leading unloading speeds and durability, even with heavy, high-moisture corn. It's static rated at 330 hp and dynamic rated at 153 hp
- The model 678XL and 678 grain carts feature a standard equipment, hydraulically controlled, multi-directional downspout that allows grain to be evenly directed — from a 90° vertical drop to 127° outward — for precise placement and load leveling. Optional on model 576
- A wheel-operated cleanout door is easily opened or closed and locks into position for easy cleanout
- A transport chain, SMV emblem, DOT-approved LED red and flashing amber taillights and reflective striping for enhanced transport safety
- A hose storage unit, plus color-coded and labeled hydraulic hoses, mean a more convenient hookup and extended hose life
- A full primer undercoat, oven-baked enamel topcoat of tractor-green or -red and silicone-sealed seams to resist corrosion
- The 36" flow-control door with an easy-to-see position indicator simplifies grain unloading
- A wide variety of high-flotation tire and dual-wheel options for reducing compaction
- High-tensile bolt-on spindles and hubs are designed specifically for greater lateral strength for enhanced cart durability
- The auger-mounted LED light enhances nighttime unloading visibility



Hydraulic auger-lock valve



Color-coded hydraulic hoses



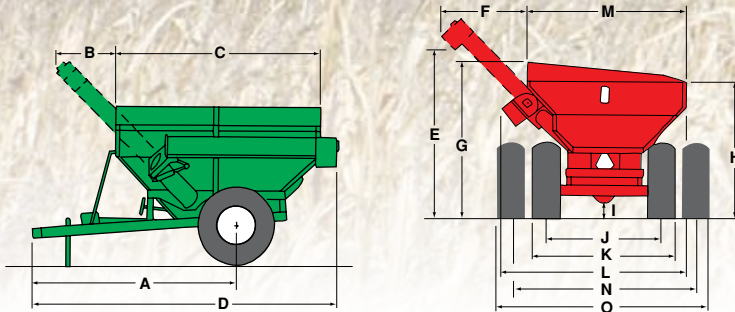
Wheel-operated cleanout door



Corner Auger Grain Cart Specifications

Model	678XL	678	576
Capacity*	630 bushels	630 bushels	550 bushels
Auger Size	17"	17"	14"
Unloading Speed (bu/min)	400	400	300
Hitch Type	Single (clevis avail.)	Single (clevis avail.)	Single (clevis avail.)
Approx. Empty Weight (lbs)	8,300	8,100	6,500
Spindle Size (high-tensile steel)	3-3/4" 4-1/2" w/duals	3-3/4" 4-1/2" w/duals	2-7/8"
Approx. Loaded Tongue Weight (lbs)	3,590	3,590	3,210
Minimum Tractor H.P. Requirements	140+	140+	130+
A	13'4"	13'4"	13'4"
B	5'6"	4'6"	5'5"
C	14'1"	14'1"	11'7"
D	23'6"	23'6"	21'9"
E	14'3"	12'8"	13'9"
F	8'8"-9'8"	7'9"-8'9"	7'3"
G	11'2"	11'2"	11'7"
H	10'4"	10'4"	10'9"
I	1'2"	1'2"	1'6"
J	10'	10'	10'
K	12'2"	12'2"	12'
L	12'	12'	12'
M	11'6"	11'6"	11'6"
N	15'	15'	—
O	16'6"	16'6"	—

* Bushel capacities were measured with #2 corn at 15% moisture (56 lb. test weight)



Options

- Tongue-mounted, dual-port hydraulic drive with highly visible pressure gauge for ensuring peak performance
- Model 410 scale system features a cab-mounted, easy-to-read LCD monitor.
- The scale can be equipped with a printer or Windows®-based downloader for convenient data capture and storage
- Weatherguard rollover tarp package features a semi-trailer-style locking design for optimum cargo protection



Weatherguard rollover tarp



Cab-mounted scale monitor

See your nearest Brent products dealer today for the complete lineup of Brent grain carts or visit the website at brentequip.com

Unverferth
Manufacturing Company, Inc.

P.O. Box 357 • Kalida, Ohio 45853 • (419) 532-3121

unverferth.com

Due to continuing improvements in the design and manufacture of Unverferth products, all specifications contained herein are subject to change without notice.

©2016 Unverferth Manufacturing Co., Inc. Printed in U.S.A.
Additional facilities in California, Georgia, Iowa, Nebraska, North Dakota, Oregon and Canada
®™ Trademarks, registered or applied for, of Unverferth Manufacturing Co., Inc., Kalida, Ohio



BGCMS4103900MS