

# FX-318 Specifications

## SPECIFICATIONS

<b>FX-318</b>	
Cutting Width	216" (5.5m)
Overall Width	228" (5.8m)
Overall Length	208" (5.3m)
Transport Width	86" (2.2m)(Singles on wings) 96" (2.4m)(Duals on wings)
Transport Height	109" (2.77m)
Deck Thickness	7GA (3/16", 4.6mm)
Weight	5800 lbs (2631kg) (Depends on configuration)
Hitch Weight	2350 lbs (1066kg)(Depends on configuration)
Minimum Tractor HP	75HP (56kW)
Recommended Tractor HP	90HP (67kW)
Tractor PTO Speed	540 or 1000rpm
Cutting Height	1.75" to 16.75" (44.5mm to 425mm)
Ground Clearance	14.75" (42.5mm)
Cutting Capacity	3.5" (89mm)
Blade Overlap	6" (152mm)
Divider Gearbox Rating	260HP (194kW)
Center & Wing Gearbox Rating	225 HP (168kW)*
Output Shaft	2.38" (60.3mm)
Blade Tip Speed	540 rpm
Center	15980 ft/min (4871 m/min)
Wing	16319 ft/min (4974 m/min)
Blade Tip Speed	1000 rpm
Center	15974 ft/min (4869 m/min)
Wing	16581 ft/min (5054 m/min)
Wing Working Range	25° down to 80° up
Wing Floating Range	25° down to 30° up
Drive Size Main	Cat. 5 CV (1000rpm), European Size 6 Cat. 6 CV (540 rpm), European Size 8
Drive Size Center & Wings	Category 5, European Size 6
Side Skirt Depth & Thickness	13.63" (346mm)
Suspension	Rubber 3 puck grommet



FX-318 mowing Macadamia Orchards

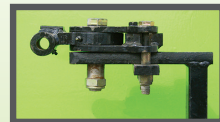


Ultra Narrow Transport Width

## HITCH OPTIONS



Adjustable Clevis



Precision Hitch



Solid Tongue



Clevis Hitch



FX-318 mowing Cattails

## FX-318 OPTIONS

Through axles; Aircraft or solid laminate tires or forklift tires; 4, 6 or 8 tire options; Single or double safety chains front and rear; Safety light kit; Standard clevis, Adjustable clevis, Precision hitch (eliminates drawbar wear), or solid tongue; Shredder blade kit, Equal Angle Hitch - Non CV drive 540 RPM only, Strut Mount for Flex Arm (Factory or Field Installed); 1/2 length front or rear belting



Forklift Tires



Aircraft Tires



Solid Laminate Tires



### Schulte Industries Ltd.

P.O. Box 70, Englefeld, Saskatchewan, Canada S0K 1N0

Tel: (306) 287-3715 Fax: (306) 287-3355

E-Mail: info@schulte.ca

Visit our Web site at: www.schulte.ca

\* Based on intermittent use. Schulte is a registered trademark of Alamo Group Inc. Schulte Industries Ltd. reserves the right to change the design, specification of its products without notice. Illustrations may include optional equipment and accessories, and may not include all standard equipment.



ISO 9001

Sold By:

PRINTED IN CANADA

PREPARED by NELSON GRAPHIC DESIGN

201404

# SCHULTE®

## FX-318 Rotary Cutter



## Legendary Strength & Quality Economically Priced

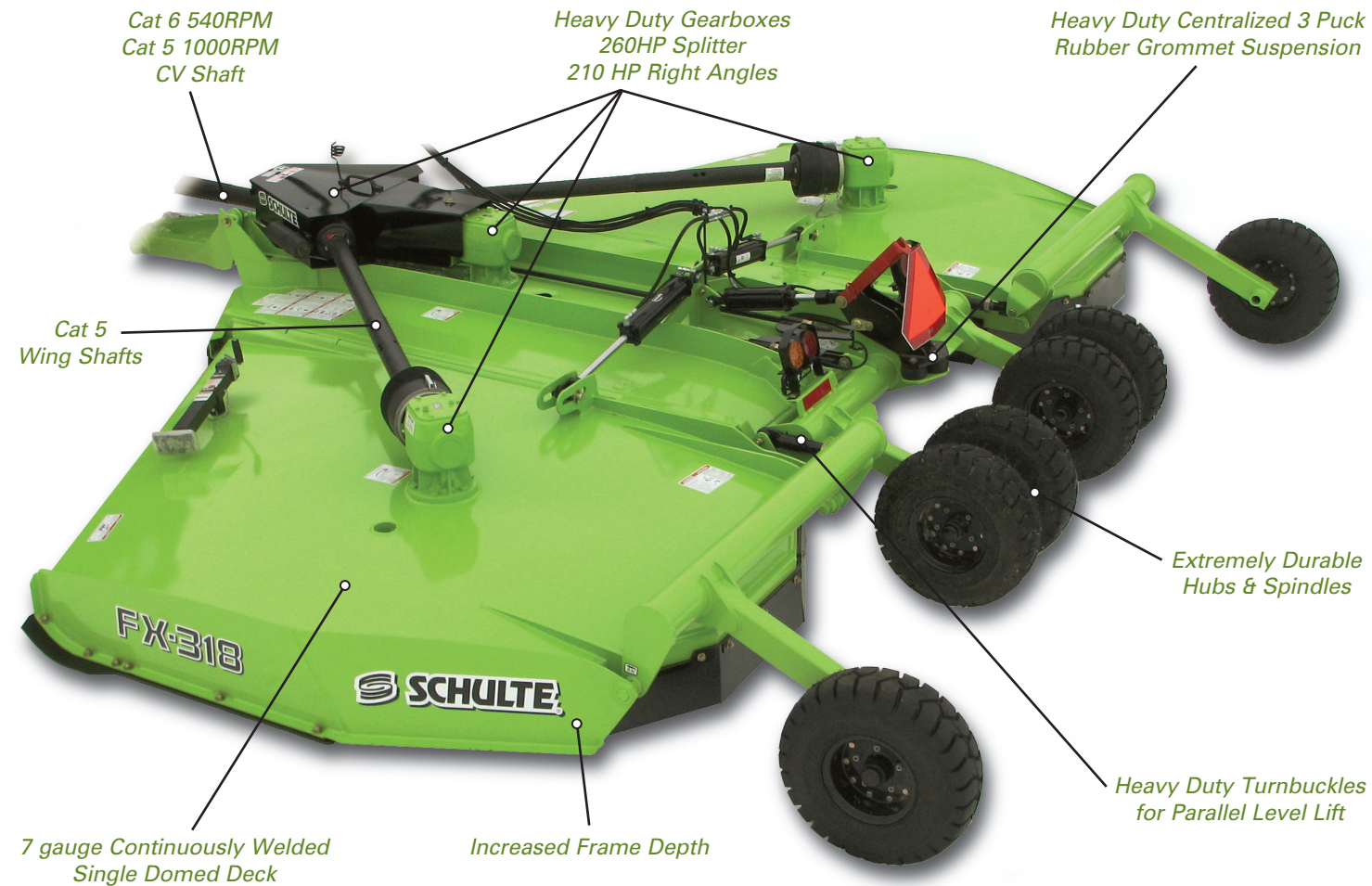
- 1 Schulte's first 18' Flex Wing mower
- 2 An ultra narrow transport width makes moving this unit extremely safe and simple
- 3 Run with the same HP tractor as most 15' flex wings, but gain the extra 3' cutting width
- 4 Excellent choice for mowing crop residue, pastures, weeds, orchards and roadsides
- 5 Single 7 gauge domed deck sheds water and debris and increases life of the deck with this easy clean feature
- 6 Available 540rpm or 1000rpm 80° CV drive or 540 equal angle non CV drive
- 7 Heavy duty gearboxes & drive system with spun formed 7gauge stump jumpers ensures durability & perfect balance

GO NUMBER ONE . . . GO SCHULTE!

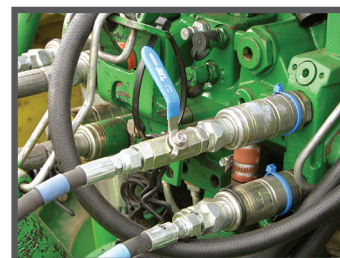


# Features

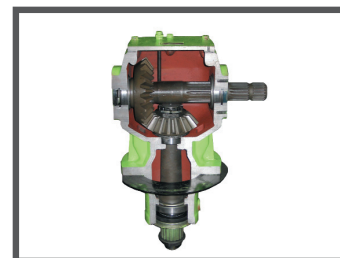
## Legendary Toughness, Economically Priced



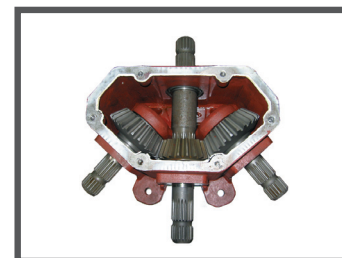
Single center lock up system



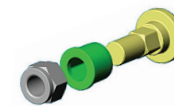
Ball valve wing lock up system



210hp right angle gearboxes heavy duty 1 3/4" input shafts. 2 3/8" tapered & splined down shafts



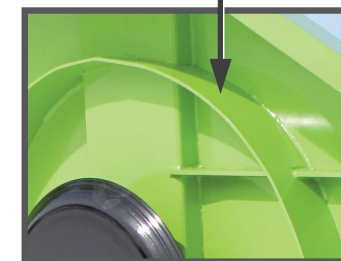
260hp heavy duty splitter box with 1 3/4" splined shafts



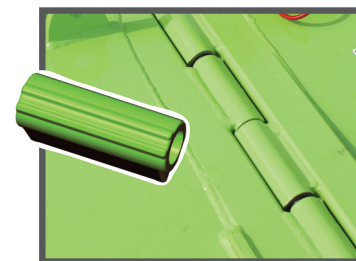
Schulte Industries exclusive Pentagon Blade Bolt provides maximum anti rotational resistance where the blade is fastened to the stump jumper pans.

All pivot points use 1" greaseable pins.

Deck rings are standard on the FX-318. Deck rings protect the cutter deck from the blades rising when obstacles are encountered.



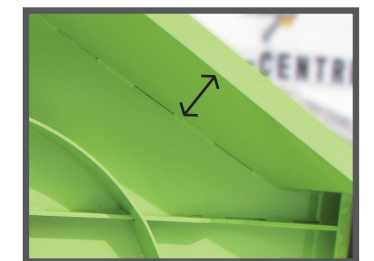
Deck protection rings are standard



Heavy duty cast hinge line with wiper seals



Heavy duty turnbuckles



13 5/8" frame depth for maximum material flow



Heavy duty drive system for peak performance



Metal seal guards on 517 hubs



Dual levelling rods with floating hitch



7 gauge spun formed stump jumper pans

# FX-318

Schulte Cutters are legendary throughout the mowing industry for being the toughest and most dependable. The FX-318 continues this renowned tradition at an economical price.

Greaseable hingeline turnbuckles help to reduce wear and aid in long life of the cutter's parallel lifting mechanism.

FX-318 side skirts are 13 5/8" deep. This additional room under the deck, along with high blade tip speeds, allows for a better cut and better material flow.

We use extremely strong and durable 517 hubs and spindles with built in metal seal guards on this cutter to tackle any type of terrain.

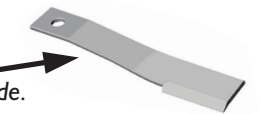
A one piece center shield allows for easy and full access to drivelines, clutches and gearboxes on the center section.

This cutter has replaceable skid shoes which are made out of 3/8" thick Abrasion Resistant steel.

The center and wing wheel standards are constructed from heavy duty large 5 9/16" O.D. x 3/8" thick HSS round tubing.

Schulte has many hitch options including clevis hitch, an adjustable clevis, precision hitch or solid tongue to help create a better fit & reduce wear on your tractor's drawbar.

Schulte Industries Super Suction 1/2" x 4" blades leave nothing behind. Schulte blades are strengthened through a hardening process which increases the impact strength of the blade. The blade is chamfered around the blade bolt hole to provide a smooth transition of surfaces around the high stress blade bolt area. The blades are also shot peened to induce beneficial compressive surface stresses over the entire length of the blade. This enhances the durability and extends the fatigue life of the blade. The cutting edge is forged giving it a stronger and tougher edge thereby extending the life of the blade.



# Features

Quality • Service • Value • Trust