

SPLIT-FIRE®

Quality Built for High Performance



Split-Fire wood splitters offer quality workmanship and design that requires much less power to split wood while offering greater operator safety. Ton-for-ton, Split-Fire wood splitters outperform and outlast comparable single stroke machines on the market today.

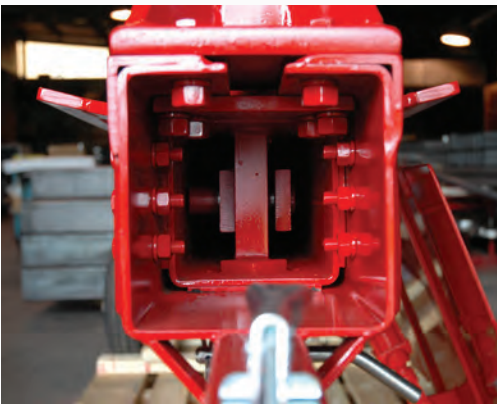
A unique 2-way splitting action allows operators to split wood both ways, to get their woodpiles split fast and easy.

Split Wood BOTH WAYS



2-Way Log Splitter

All Split-Fire wood splitters feature the hallmark 2-way splitting action on both the forward and reverse stroke, doubling productivity.



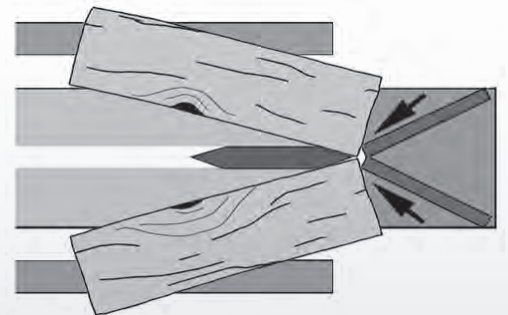
Heavy Duty Square Tube Frame

Much stronger than an I-beam and built to last.

Cylinder fully protected inside the main frame pushes and pulls straight inline.

Unrivalled Safety

Keeps pressures centered & allows wood to bend around the log stop to prevent dangerous kick-outs and fly-outs.



Friction Free Slide System

Self-lubricating UHMW slide pads running down the entire length of the bearing area prevents binding friction.





Self Contained

Self-contained wood splitters are powered by Honda engines. Available with 2-way and 4-way wedge.

2260

Self Contained 2260 Two-Way Log Splitter

With a cycle time between 4-6 seconds the 2260 Split-Fire log splitter is one of the fastest log splitters found on the market today! Its compact design makes it the perfect wood splitting companion for property owners splitting 50 cords of wood per year or less. All Split-Fire log splitters feature the 2-way splitting action from the knife that splits wood in both directions.

FRAME	5" x 5" steel tube	OVERALL WIDTH	40"
LOG CAPACITY	18" – 20" diameter	OVERALL LENGTH	80"
TONNAGE	16 tons splitting force	OVERALL HEIGHT	34"
PRODUCTION VOLUME	50 cord per year or less	WEIGHT	380 lbs
CYCLE SPEED	4-6 seconds	BED HEIGHT	23"
POWER SOURCE	GC 6.0 hp Honda	KNIFE HEIGHT (+/- ¼")	8"
PUMP	11 GPM low pressure 2.7 GPM high pressure	CYLINDER SIZE	2.75" x 24"
RESERVOIR	10.5 L	TIRE SIZE	4.80" x 8"
STROKE LENGTH	24"	STANDARD HITCH SIZE	2" ball coupler



2265

Self Contained 2265 Two-Way Log Splitter

Powered by an industrial class Honda GX series engine the 2265 Split-Fire log splitter is ideal for home owners, rentals or light duty contractor use. Rated for 18" – 20" inch diameter rounds this compact wood splitter features a fast 4-6 second cycle time! All Split-Fire log splitters feature the 2-way splitting action from the knife that splits wood in both directions.

FRAME	5" x 5" steel tube	OVERALL WIDTH	40"
LOG CAPACITY	18" – 20" diameter	OVERALL LENGTH	80"
TONNAGE	16 tons splitting force	OVERALL HEIGHT	34"
PRODUCTION VOLUME	50 cord per year or less	WEIGHT	380 lbs
CYCLE SPEED	4-6 seconds	BED HEIGHT	23"
POWER SOURCE	GX 6.5 hp Honda	KNIFE HEIGHT (+/- ¼")	8"
PUMP	11 GPM low pressure 2.7 GPM high pressure	CYLINDER SIZE	2.75" x 24"
RESERVOIR	10.5 L	TIRE SIZE	4.80" x 8"
STROKE LENGTH	24"	STANDARD HITCH SIZE	2" ball coupler



3255

Self Contained 3255 Two-Way Log Splitter

The 3255 was originally designed for the equipment rental industry. Since 1985 it has gained a reputation for being a safe, low maintenance, highly productive log splitter that provides a fast Return On Investment! Its rugged yet simple compact design makes it a popular rental machine that helps property owners split their wood quickly, easily and safely.

All Split-Fire log splitters feature the 2-way splitting action from the knife that splits wood in both directions.

FRAME	6" x 6" steel tube	OVERALL WIDTH	40"
LOG CAPACITY	30" – 36" diameter	OVERALL LENGTH	84"
TONNAGE	20 tons splitting force	OVERALL HEIGHT	34"
PRODUCTION VOLUME	50 cord per year +	WEIGHT	440 lbs
CYCLE SPEED	9-11 seconds	BED HEIGHT	24"
POWER SOURCE	GX 5.5 hp Honda	KNIFE HEIGHT (+/- ¼")	8"
PUMP	11 GPM low pressure 2.7 GPM high pressure	CYLINDER SIZE	3.5" x 24"
RESERVOIR	12.5 L	TIRE SIZE	4.80" x 8"
STROKE LENGTH	24"	STANDARD HITCH SIZE	2" ball coupler



3455

Self Contained 3455 Two-Way Log Splitter

This machine brings wood splitting to the next level, by splitting four-ways, in both directions. The four-way knife works great for wood up to a diameter of 10"-12" and can be interchanged in less than 15 seconds with the double sided 2-way knife. When ordering this model, users get both the 2-way knife and the 4-way wedge giving you complete control over your wood splitting needs. All Split-Fire log splitters feature the 2-way splitting action from the knife that splits wood in both directions.

FRAME	6" x 6" steel tube	OVERALL WIDTH	40"
LOG CAPACITY	30" – 36" diameter	OVERALL LENGTH	85"
TONNAGE	20 tons splitting force	OVERALL HEIGHT	34"
PRODUCTION VOLUME	50 cord per year +	WEIGHT	500 lbs
CYCLE SPEED	9-11 seconds	BED HEIGHT	24"
POWER SOURCE	GX 5.5 hp Honda	KNIFE HEIGHT (+/- ¼")	9.5"
PUMP	11 GPM low pressure 2.7 GPM high pressure	CYLINDER SIZE	3.5" x 24"
RESERVOIR	12.5 L	TIRE SIZE	4.80" x 8"
STROKE LENGTH	24"	STANDARD HITCH SIZE	2" ball coupler



3265

Self Contained 3265 Two-Way Log Splitter

The 3265 is similar to the model 3255 except it comes with a 6.5 hp Honda GX series engine. The extra horse power helps split the really knotted and twisted hard woods while giving you an additional 15% more power. All Split-Fire log splitters feature the 2-way splitting action from the knife that splits wood in both directions.

FRAME	6" x 6" steel tube	OVERALL WIDTH	40"
LOG CAPACITY	30" – 36" diameter	OVERALL LENGTH	84"
TONNAGE	22 tons splitting force	OVERALL HEIGHT	34"
PRODUCTION VOLUME	50 cord per year +	WEIGHT	440 lbs
CYCLE SPEED	9-11 seconds	BED HEIGHT	24"
POWER SOURCE	GX 6.5 hp Honda	KNIFE HEIGHT (+/- ¼")	8"
PUMP	11 GPM low pressure 2.7 GPM high pressure	CYLINDER SIZE	3.5" x 24"
RESERVOIR	12.5 L	TIRE SIZE	4.80" x 8"
STROKE LENGTH	24"	STANDARD HITCH SIZE	2" ball coupler



3465

Self Contained 3465 Two-Way Log Splitter

Increase your tonnage with a Honda 6.5 hp GX series engine while splitting four-ways in both directions. The four-way knife works great for wood up to a diameter of 10"-12" and can be interchanged in less than 15 seconds with the double sided 2-way knife. When ordering this model, users get both the 2-way knife and the 4-way wedge giving you complete control over your wood splitting needs. This model comes with a Honda 6.5 hp engine and is ideal for high volume firewood production. All Split-Fire log splitters feature the 2-way splitting action from the knife that splits wood in both directions.

FRAME	6" x 6" steel tube	OVERALL WIDTH	40"
LOG CAPACITY	30" – 36" diameter	OVERALL LENGTH	85"
TONNAGE	22 tons splitting force	OVERALL HEIGHT	34"
PRODUCTION VOLUME	50 cord per year +	WEIGHT	500 lbs
CYCLE SPEED	9-11 seconds	BED HEIGHT	24"
POWER SOURCE	GX 6.5 hp Honda	KNIFE HEIGHT (+/- ¼")	9.5"
PUMP	11 GPM low pressure 2.7 GPM high pressure	CYLINDER SIZE	3.5" x 24"
RESERVOIR	12.5 L	TIRE SIZE	4.80" x 8"
STROKE LENGTH	24"	STANDARD HITCH SIZE	2" ball coupler

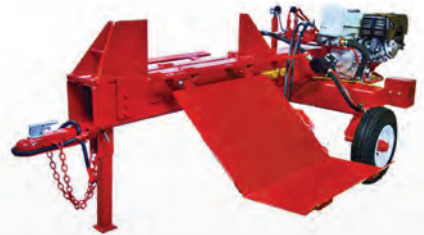


4290

Self Contained 4290 Two-Way Log Splitter

For those who require peak power and performance, the 4290 is the perfect choice! An absolute no nonsense splitter the 4290 is designed to work continuously without failure splitting the hardest density hard woods up to 48" in diameter while boasting a full cycle time of only 13 seconds, both ways! All Split-Fire 4000 series models are manufactured with a 7" x 7" reinforced solid steel tube frame, reinforced stops and frictionless Ultra-High-Molecular-Weight polyethylene sliders making them the most rugged, longest lasting log splitters available on the market today. All Split-Fire log splitters feature the 2-way splitting action from the knife that splits wood in both directions.

FRAME	7" x 7" steel tube	OVERALL WIDTH	44"
LOG CAPACITY	36" – 48" diameter	OVERALL LENGTH	87"
TONNAGE	32 tons splitting force	OVERALL HEIGHT	35"
PRODUCTION VOLUME	100 cord per year	WEIGHT	640 lbs
CYCLE SPEED	11-13 seconds	BED HEIGHT	25"
POWER SOURCE	GX 9.0 hp Honda	KNIFE HEIGHT (+/- ¼")	9"
PUMP	16 GPM low pressure 4 GPM high pressure	CYLINDER SIZE	4.5" x 24"
RESERVOIR	25 L	TIRE SIZE	4.80" x 8"
STROKE LENGTH	24"	STANDARD HITCH SIZE	2" ball coupler



4490

Self Contained 4490 Two-Way Log Splitter

For peak power the Split-Fire 4490 offers splitting performance required by commercial contractors producing more than 100 face cord per year continuously, working reliably, day in day out. Equipped with both 2-way and 4-way knives, the 4000 series wood splitters are manufactured with a 7" by 7" inch solid steel reinforced tube frame, reinforced stops and frictionless Ultra-High-Molecular-Weight polyethylene sliders making this the most rugged longest lasting log splitter available on the market today. Its inline 4.5 inch cylinder provides maximum power that will cut through the knottiest, hardest, large diameter blocks up to 48" in diameter, easily out-splitting 32 ton rated machines while boasting a cycle time of only 13 seconds. All Split-Fire log splitters feature the 2-way splitting action from the knife that splits wood in both directions.

FRAME	7" x 7" steel tube	OVERALL WIDTH	44"
LOG CAPACITY	40" – 48" diameter	OVERALL LENGTH	88"
TONNAGE	32 tons splitting force	OVERALL HEIGHT	38"
PRODUCTION VOLUME	100 cord per year	WEIGHT	740 lbs
CYCLE SPEED	11-13 seconds	BED HEIGHT	25"
POWER SOURCE	GX 9.0 hp Honda	KNIFE HEIGHT (+/- ¼")	9.5" / 2-way 12" / 4-way
PUMP	16 GPM low pressure 4 GPM high pressure	CYLINDER SIZE	4.5" x 24"
RESERVOIR	25 L	TIRE SIZE	4.80" x 8"
STROKE LENGTH	24"	STANDARD HITCH SIZE	2" ball coupler





3 Point Hitch

Tractor mount 3-point-hitch units operate from the tractor's hydraulics at 4gpm - 10 gpm. Available with 2-way and 4-way wedge.

2203

3 Point Hitch 2203 Two-Way Log Splitter

The 2203 Split-Fire log splitter can be operated on small tractors with hydraulic flow rates of only 4 gpm operating at 2700 PSI or more.

This model also features Split-Fire's unique 2-way splitting action from the knife which splits wood in both the forward and reverse stroke.

FRAME	5" x 5" steel tube	OVERALL WIDTH	34"
LOG CAPACITY	18" – 20" diameter	OVERALL LENGTH	71"
TONNAGE	16 tons @ 2700 psi	OVERALL HEIGHT	18"
PRODUCTION VOLUME	50 cord per year or less	WEIGHT	240 lbs
CYCLE SPEED	Governed by Tractor Volume	BED HEIGHT	3Pt Hitch raise / lower
POWER SOURCE	3Pt. Hitch Tractor Mount Includes 5' of hose	KNIFE HEIGHT (+/- ¼")	8"
PUMP	Tractor Pump Displacement	CYLINDER SIZE	2.75" x 24"
RESERVOIR	Tractor	HYDRAULIC FLOW	4 gpm – 11 gpm
STROKE LENGTH	24"	QUICK CONNECTS	Not Included



3203

3 Point Hitch 3203 Two-Way Log Splitter

Split-Fire 3-point-hitch models are the perfect choice for tractor owners.

All models feature Split-Fire's 2-way splitting action from the knife which splits wood in both the forward and reverse stroke and can be operated with as low as 4 gpm at 2900 PSI.

For optimal performance 11 gpm hydraulic flow from the tractor is recommended.

FRAME	6" x 6" steel tube	OVERALL WIDTH	34"
LOG CAPACITY	30" – 36" diameter	OVERALL LENGTH	72"
TONNAGE	20 tons @ 2900 psi	OVERALL HEIGHT	18"
PRODUCTION VOLUME	50 cord per year +	WEIGHT	290 lbs
CYCLE SPEED	9-11 seconds Dependant on tractor Volume	BED HEIGHT	3 Pt. Hitch Raise/Lower
POWER SOURCE	3 Pt. Hitch	KNIFE HEIGHT (+/- ¼")	8"
PUMP	Tractor Pump Displacement	CYLINDER SIZE	3.5" x 24"
RESERVOIR	Tractor	HYDRAULIC FLOW	4 gpm - 11 gpm
STROKE LENGTH	24"	STANDARD HITCH SIZE	Category 1



3403

3 Point Hitch 3403 Two-Way Log Splitter

For those requiring higher production, the 3403 model 3-point-hitch log splitter can accept both the double sided 2-way knife and the 4-way knife. The 4-way knife works great for wood up to a diameter of 10"-12" and can be interchanged in less than 15 seconds with the double sided 2-way knife. When ordering this model users get both the 2-way knife and the 4-way wedge, giving you complete control over your wood splitting needs.

FRAME	6" x 6" steel tube	OVERALL WIDTH	34"
LOG CAPACITY	30" – 36" diameter	OVERALL LENGTH	73"
TONNAGE	20 tons @ 2900 psi	OVERALL HEIGHT	18"
PRODUCTION VOLUME	50 cord per year +	WEIGHT	350 lbs
CYCLE SPEED	Governed by Tractor Volume	BED HEIGHT	3Pt Hitch raise / lower
POWER SOURCE	3Pt. Hitch Tractor Mount Includes 5' of hose	KNIFE HEIGHT (+/- ¼")	9.5" / 2-way 9.5" / 4-way
PUMP	Tractor Pump Displacement	CYLINDER SIZE	3.5" x 24"
RESERVOIR	Tractor	HYDRAULIC FLOW	4 gpm – 11 gpm
STROKE LENGTH	24"	QUICK CONNECTS	Not Included



4203

3 Point Hitch 4203 Two-Way Log Splitter

The 4203 is great for those who demand the highest power. An absolute no nonsense splitter the 4203 is designed to work continuously without failure splitting the hardest density hard woods up to 48" in diameter. For this model 10-20 gpm is preferred. All Split-Fire 4000 series models are manufactured with a 7" by 7" reinforced solid steel tube frame, reinforced stops and frictionless Ultra-High-Molecular-Weight polyethylene sliders making them the most rugged, longest lasting log splitters available on the market today.

FRAME	7" x 7" steel tube	OVERALL WIDTH	34"
LOG CAPACITY	40" – 48" diameter	OVERALL LENGTH	74"
TONNAGE	32 tons @ 2900 psi	OVERALL HEIGHT	26"
PRODUCTION VOLUME	100 cord per year +	WEIGHT	430 lbs
CYCLE SPEED	Governed by Tractor Volume	BED HEIGHT	3Pt Hitch raise / lower
POWER SOURCE	3Pt. Hitch Tractor Mount Includes 5' of hose	KNIFE HEIGHT (+/- ¼")	9"
PUMP	Tractor Pump Displacement	CYLINDER SIZE	4.5" x 24"
RESERVOIR	Tractor	HYDRAULIC FLOW	10 gpm–20 gpm
STROKE LENGTH	24"	QUICK CONNECTS	Not Included



4403

3 Point Hitch 4403 Two-Way Log Splitter

The model 4403 can accept both 2-way and 4-way knives. Split 48" oversized logs down to 10" – 12" in diameter and then put on the 4-way wedge to really ramp up production, quartering wood in both directions! All Split-Fire 4000 series models are manufactured with a 7" by 7" reinforced solid steel tube frame, reinforced stops and frictionless Ultra-High-Molecular-Weight polyethylene sliders making them the most rugged, longest lasting log splitters available on the market today.

FRAME	7" x 7" steel tube	OVERALL WIDTH	34"
LOG CAPACITY	40" – 48" diameter	OVERALL LENGTH	76"
TONNAGE	32 tons @ 2900 psi	OVERALL HEIGHT	26"
PRODUCTION VOLUME	100 cord per year +	WEIGHT	530 lbs
CYCLE SPEED	Governed by Tractor Volume	BED HEIGHT	3Pt Hitch raise / lower
POWER SOURCE	3Pt. Hitch Tractor Mount Includes 5' of hose	KNIFE HEIGHT (+/- ¼")	9.5" / 2-way 12" / 4-way
PUMP	Tractor Pump Displacement	CYLINDER SIZE	4.5" x 24"
RESERVOIR	Tractor	HYDRAULIC FLOW	10gpm – 20gpm
STROKE LENGTH	24"	QUICK CONNECTS	Not Included





Skid Steer – attachment

Skid steer attachment models are designed for loaders with aux hydraulics. Operators split wood from controls mounted on the log splitter.

3207

Skid Steer 3207 Two-Way Log Splitter

The Split-Fire 3207 skid steer wood splitter attachment is a great choice for operating with auxiliary hydraulics. There is no need to have a second operator in the cab as it can be operated independently, with the controls mounted on the log splitter.

FRAME	6" x 6" steel tube	OVERALL WIDTH	47"
LOG CAPACITY	30" – 36" diameter	OVERALL LENGTH	75.5"
TONNAGE	20 tons @ 2900 psi	OVERALL HEIGHT	18.5"
PRODUCTION VOLUME	50 cord per year +	WEIGHT	370 lbs
CYCLE SPEED	Governed by Skid Steer Volume	BED HEIGHT	Skid Steer Plates raise / lower
POWER SOURCE	Skid Steer Attach Includes 5' of hose	KNIFE HEIGHT (+/- 1/4")	8"
PUMP	Skid Steer Pump Displacement	CYLINDER SIZE	3.5" x 24"
RESERVOIR	Skid Steer	HYDRAULIC FLOW	4 gpm – 11 gpm
STROKE LENGTH	24"	QUICK CONNECTS	Not Included



4207

Skid Steer 4207 Two-Way Log Splitter

The Split-Fire 4207 skid steer wood splitter attachment is a great choice for operating with auxiliary hydraulics. There is no need to have a second operator in the cab as it can be operated independently, with the controls mounted on the log splitter. All Split-Fire 4000 series models are manufactured with a 7" by 7" reinforced solid steel tube frame, reinforced stops and frictionless Ultra-High-Molecular-Weight polyethylene sliders making them the most rugged, longest lasting log splitters available on the market today.

FRAME	7" x 7" steel tube	OVERALL WIDTH	47"
LOG CAPACITY	40" – 48" diameter	OVERALL LENGTH	78"
TONNAGE	32 tons @ 2900 psi	OVERALL HEIGHT	18.5"
PRODUCTION VOLUME	100 cord per year +	WEIGHT	500 lbs
CYCLE SPEED	Governed by Skid Steer Volume	BED HEIGHT	Skid Steer Plates raise / lower
POWER SOURCE	Skid Steer Attach Includes 5' of hose	KNIFE HEIGHT (+/- 1/4")	9"
PUMP	Skid Steer Pump Displacement	CYLINDER SIZE	4.5" x 24"
RESERVOIR	Skid Steer	HYDRAULIC FLOW	10gpm – 20gpm
STROKE LENGTH	24"	QUICK CONNECTS	Not Included



4407 & 3407

Skid Steer 3407 & 4407 Two-Way Log Splitter

Add a 4-way wedge option to your skid steer attached wood splitter with the models 3407 and 4407. Equivalent to size and splitting performance of 3000 and 4000 series models, these splitter attachments have been fabricated to accept both the double sided 2-way knife and the 4-way wedge, that can be interchanged in seconds. The 4-way knife works great for wood up to a diameter of 10"-12" to produce four even legs when splitting full rounds.

Combining the 4-way wedge option with the 2-way splitting action allows operators to quarter their logs on the forward and reverse stroke for added productivity. Both the 3407 and the 4407 are made from a reinforced solid steel tube frame and frictionless Ultra-High-Molecular-Weight polyethylene sliders.

When ordering these model users get both the 2-way knife and the 4-way wedge, giving you complete control over your wood splitting needs.

3407

FRAME	6" x 6" steel tube	OVERALL WIDTH	47"
LOG CAPACITY	30" – 36" diameter	OVERALL LENGTH	76.5"
TONNAGE	20 tons @ 2900 psi	OVERALL HEIGHT	18.5"
PRODUCTION VOLUME	50 cord per year +	WEIGHT	430 lbs
CYCLE SPEED	Governed by Skid Steer Volume	BED HEIGHT	Skid Steer Plates raise / lower
POWER SOURCE	Skid Steer Attach Includes 5' of hose	KNIFE HEIGHT (+/- ¼")	9" / 2-way 9.5" / 4-way
PUMP	Skid Steer Pump Displacement	CYLINDER SIZE	3.5" x 24"
RESERVOIR	Skid Steer	HYDRAULIC FLOW	4 gpm – 11 gpm
STROKE LENGTH	24"	QUICK CONNECTS	Not Included

4407

FRAME	7" x 7" steel tube	OVERALL WIDTH	47"
LOG CAPACITY	40" – 48" diameter	OVERALL LENGTH	76.5"
TONNAGE	32 tons @ 2900 psi	OVERALL HEIGHT	18.5"
PRODUCTION VOLUME	100 cord per year +	WEIGHT	460 lbs
CYCLE SPEED	Governed by Skid Steer Volume	BED HEIGHT	Skid Steer Plates raise / lower
POWER SOURCE	Skid Steer Attach Includes 5' of hose	KNIFE HEIGHT (+/- ¼")	9.5" 2-way 12" 4-way
PUMP	Skid Steer Pump Displacement	CYLINDER SIZE	4.5" x 24"
RESERVOIR	Skid Steer	HYDRAULIC FLOW	10gpm – 20gpm
STROKE LENGTH	24"	QUICK CONNECTS	Not Included

4-Way Wedge



Models include: 3403, 3455, 3465, 3407, 4407, 4490 & 4403

Operators can split wood with a single 2-way knife or a 4-way wedge on these models, which quarter wood pieces 10 - 12 inches diameter. These models come with both knives which are interchangeable in seconds via a single locking pin.

All Split-Fire log splitters that take a 4-way wedge have been engineered to keep pressures centered. Stops are braced with side-wings to avoid tipping and the frames are reinforced to prevent bowing and twisting. Combining the 4-way wedge option with the 2-way splitting action of Split-Fire log splitters allow operators to quarter their logs on the forward and reverse stroke for added productivity!



Skid Steer – inverted

Skid steer - inverted models are designed for loaders with aux hydraulics. Operators can split wood from the comfort of the cab with the inverted series.

3208

Skid Steer 3208 Inverted Two- Way Log Splitter

Operators can split wood from the comfort of their cab with Split-Fire's inverted series. The 3208 is the smaller and quicker machine while upgrading to the 4208 gets you extra power needed for the large knotted blocks. Both models feature Split-Fire's 2-way splitting action from the knife which splits wood in both the forward and reverse stroke.

FRAME	6" x 6" steel tube	OVERALL WIDTH	47"
LOG CAPACITY	30" – 36" diameter	OVERALL LENGTH	73.5"
TONNAGE	20 tons @ 2900 psi	OVERALL HEIGHT	18.5"
PRODUCTION VOLUME	50 cord per year +	WEIGHT	340 lbs
CYCLE SPEED	Governed by Skid Steer Volume	BED HEIGHT	Skid Steer Plates raise / lower
POWER SOURCE	Skid Steer Attach Includes 5' of hose	KNIFE HEIGHT (+/- ¼")	8"
PUMP	Skid Steer Pump Displacement	CYLINDER SIZE	3.5" x 24"
RESERVOIR	Skid Steer	HYDRAULIC FLOW	4 gpm – 11 gpm
STROKE LENGTH	24"	QUICK CONNECTS	Not Included



4208

Skid Steer 4208 Inverted Two- Way Log Splitter

Operators can split wood from the comfort of their cab with Split-Fire's inverted series. The 4208 gives you the extra power needed for the large knotted blocks. All Split-Fire 4000 series models are manufactured with a 7" by 7" reinforced solid steel tube frame, reinforced stops and frictionless Ultra-High-Molecular-Weight polyethylene sliders making them the most rugged, longest lasting log splitters available on the market today.

FRAME	7" x 7" steel tube	OVERALL WIDTH	47"
LOG CAPACITY	40" – 48" diameter	OVERALL LENGTH	76"
TONNAGE	32 tons @ 2900 psi	OVERALL HEIGHT	18.5"
PRODUCTION VOLUME	100 cord per year +	WEIGHT	460 lbs
CYCLE SPEED	Governed by Skid Steer Volume	BED HEIGHT	Skid Steer Plates raise / lower
POWER SOURCE	Skid Steer Attach Includes 5' of hose	KNIFE HEIGHT (+/- ¼")	9"
PUMP	Skid Steer Pump Displacement	CYLINDER SIZE	4.5" x 24"
RESERVOIR	Skid Steer	HYDRAULIC FLOW	10gpm – 20gpm
STROKE LENGTH	24"	QUICK CONNECTS	Not Included



Options for PRODUCTIVITY



Extended Stroke Lengths

Split-Fire's in-house design and engineering capabilities can customize log splitters for longer stroke lengths of 30, 36 and 48 inches. This option is ideal for customers feeding an outdoor wood burning furnace or boiler and is available for all log splitters except for 2000 series models.



Log Lifter

The hydraulic log lifter is an option available on all 3pt hitch and self-contained log splitters. It is very useful for lifting heavier logs, but it can also be used as a table locked in the horizontal position. Lifting capacity varies from 500lbs – 800lbs depending on splitter model.



3" Knife Extension

Available on 3200 & 4200 series models. This add-on helps with stringy wood that is split but still not quite pulled apart usually requiring the operator to split on the opposite side. It is also useful for splitting oversized logs.



Highway Towable (HT) models

Come with 2" ball hitch, safety chains and larger high speed tires capable of highway speeds. Base models are equipped with regular turf tires. Light buckets are required on all towable models in Canada. US (HT) models come with the high-speed tires and reflector strips only. Light Buckets & Assembly are optional on US models.

Other Options

• Heavy Duty Suspension

Torsion axels rated for 1400 lbs. This upgrade provides a smooth towing experience and is recommended for off-road towing or for towing over heavily potted roads and highways.

• Extended Nose Hitch

Tongue extensions are available upon request.

This is useful for towing behind All Terrain Vehicles (ATV) or lawn tractors. Hitch options include Pintle Hitch and 1 7/8" couplers. Also available is an 800lb swivel jack with a 6" wheel for easy handling.

• Raised Height

Available as a 4" or 8" lift kit to raise the bed height of the splitter. Recommended for customers over 6 feet tall.

Splitters can be raised by adding 12" or 13" High Speed tires, extending the nose stand and axels. This will raise the splitter bed from a standard height of 23/24/25 inches to 27"- 33" from the ground, depending on the model. If equipped with a hydraulic log lifter, 2 extra steel plates are welded to match the height of the wood splitter.

SPLIT-FIRE®



Made in Canada

All Split-Fire log splitters are manufactured in Canada using the highest quality structural tubing and materials in their components sourced from North American suppliers.

They are designed, fabricated, welded, and painted in-house and pre-tested to ensure quality.

The Split-Fire team includes 10 full-time employees operating out of an 8000 square foot facility, in Norwich, Ontario, Canada.

Split-Fire log splitters are designed and engineered to be safe, productive, long lasting machines using design principals not found in other comparable products. A combination of smart engineering and quality manufacturing by highly skilled technicians allows us to produce quality made in Canada log splitters for customers world-wide.

SPLIT-FIRE SALES INC.

285633 Airport Road | Norwich, ON., N0J 1P0

Tel. 519.468.3647 | Toll free. 877.548.3473 | Fax. 877.256.9131

www.split-fire.com | sales@split-fire.com

