



**Food Plot Seeder
Models FPS-6, FPSA-6, FPSB-6,
FPST-6, FPSAT-6 and FPSBT-6
Parts Manual**



LANDOLL COMPANY, LLC

1900 North Street
Marysville, Kansas 66508
(785) 562-5381

800-428-5655 ~ WWW.LANDOLL.COM

1 Instructions for Ordering Parts

2 Illustrated Parts List

3 Point Hitch and Link	2-1
Drawbar Assembly	2-3
RockShaft Assembly with Hydraulic Cylinder	2-5
RockShaft Assembly with Ratchet	2-7
Frame, Deflector and Scraper	2-9
Frame and Scraper	2-10
Coulters and Coulter Gangs	2-11
S-Tine Assembly	2-12
Positive Drive Roller Kit (Optional)	2-13
Roller Assembly	2-15
Seed Box Assembly	2-17
Agitator Seedbox Assembly	2-19
Meter Box Drive Assembly	2-23
Agitator Box Drive Assembly	2-25
Meter and Agitator Box Drive Assembly	2-27
Hydraulic Layout	2-29
Coil Tine Assembly (Optional)	2-31
Rock Box (Optional)	2-32
9J440 Hydraulic Cylinder, 2-1/2 x 6 - Lion	2-33

3 Glossary

4 Numerical Index

Instructions for Ordering Parts

**** Repair parts must be ordered through an authorized dealer ****

DEALER INSTRUCTIONS FOR ORDERING PARTS FROM LANDOLL PARTS DISTRIBUTION CENTER

PHONE #: 800-423-4320 OR 785-562-5381
ORDER ONLINE: Dealer.landoll.com

FAX #: 888-527-3909

IDENTIFICATION PLATE

See Figure 1-1 for the identification plate, which lists the model number and serial number of the equipment, is located on the right side of the Food Plot Seeder.

SERIAL NUMBER NOMENCLATURE

The serial number for the Brillion Food Plot Seeder is located on the identification plate. The following information will help decode the Landoll serial number.

FSE2000100 = nnmysssss

nn	= model series (i.e. "FS" for all Food Plot Seeders)
m	= month of manufacture (ex. "E" means June. The letter I is not used.)
yy	= year manufactured (ex. "20" means 2020)
sssss	= Sequential number used to track warranty and service information.



Figure 1-1: Identification Plate

Illustrated Parts List

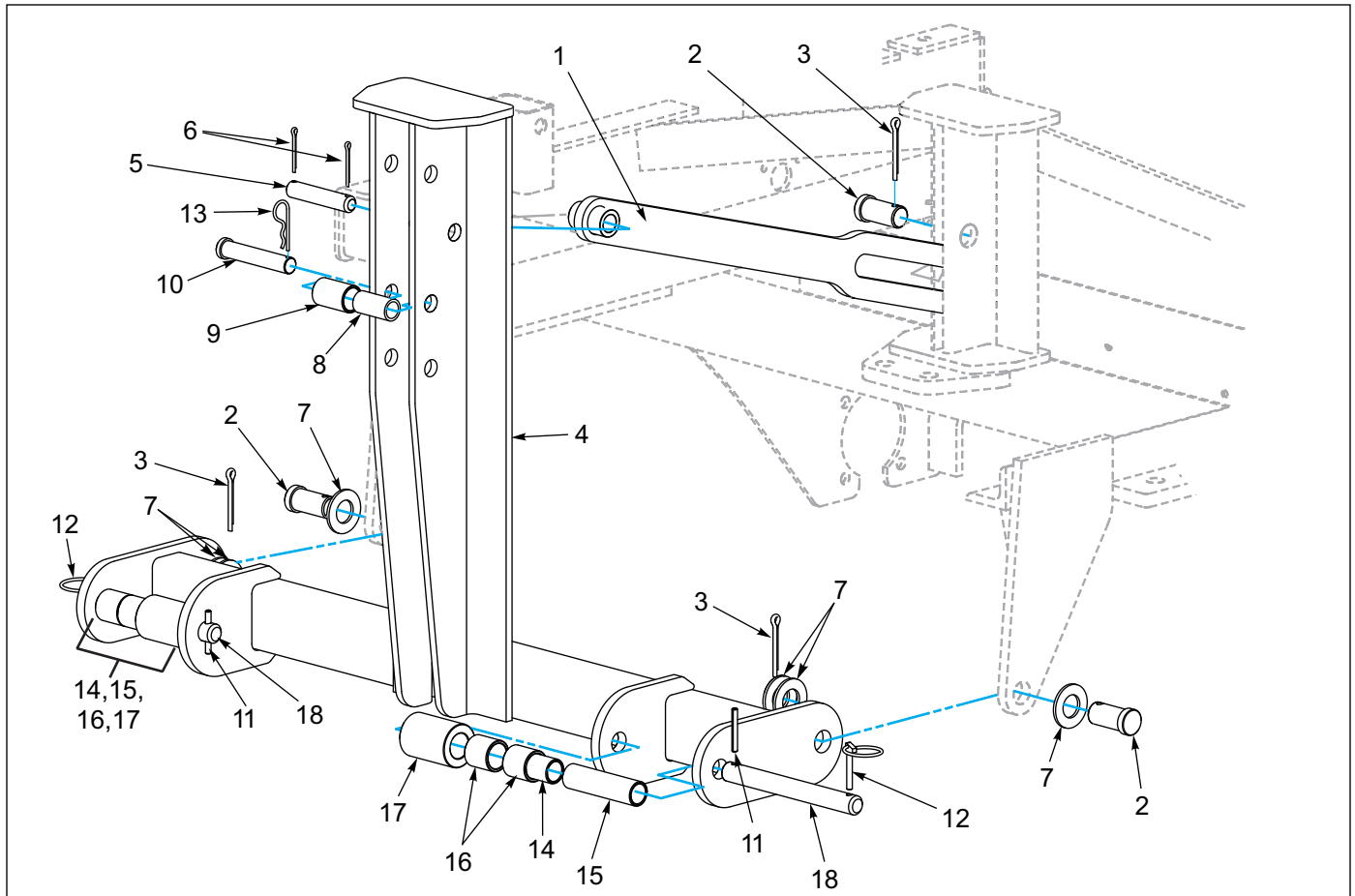


Figure 2-1: 3 Point Hitch and Link

3 Point Hitch and Link

ITEM	PART NUMBER	DESCRIPTION	QTY
1	2P065	LINK WLD	1
2	4D983	CLEVIS PIN, 1.0 X 3.125	3
3	1C869	COTTER PIN, 1/4 X 2, ZP	3
4	2P061	HITCH, 3 POINT	1
5	9J848	PIN, 0.75 X 3.875 H2	1
6	1C205	COTTER PIN, 5/32 X 1-1/2, ZP	2
7	1C871	WASHER, FLT 1" SAE, ZP	6
8	7K229	TUBE, RND (SLEEVE) 0.76 X 1.0 X 2.0	1
9	5D157	TUBE, RND (SLEEVE) 1.032 X 1.25 X 1.938	1
10	5C077	CLEVIS PIN, 0.75 X 4.0	1
11	2D894	ROLL PIN, 1/4 X 2, ZP	2
12	5D110	KLIK-PIN, 1/4 X 1-3/4	2
13	6J448	HAIR PIN COTTER, 1/8	1
14	7K227	TUBE, RND (SLEEVE) 0.906 X 1.125 X 1.406	2
15	7K228	TUBE, RND (SLEEVE) 0.906 X 1.125 X 4.281	2
16	7K226	TUBE, RND (SLEEVE) 1.156 X 1.438 X 1.406	4
17	7K225	TUBE, RND (SLEEVE) 1.156 X 2.0 X 2.813	2
18	7K230	PIN, 0.875 X 8.25 H2	2

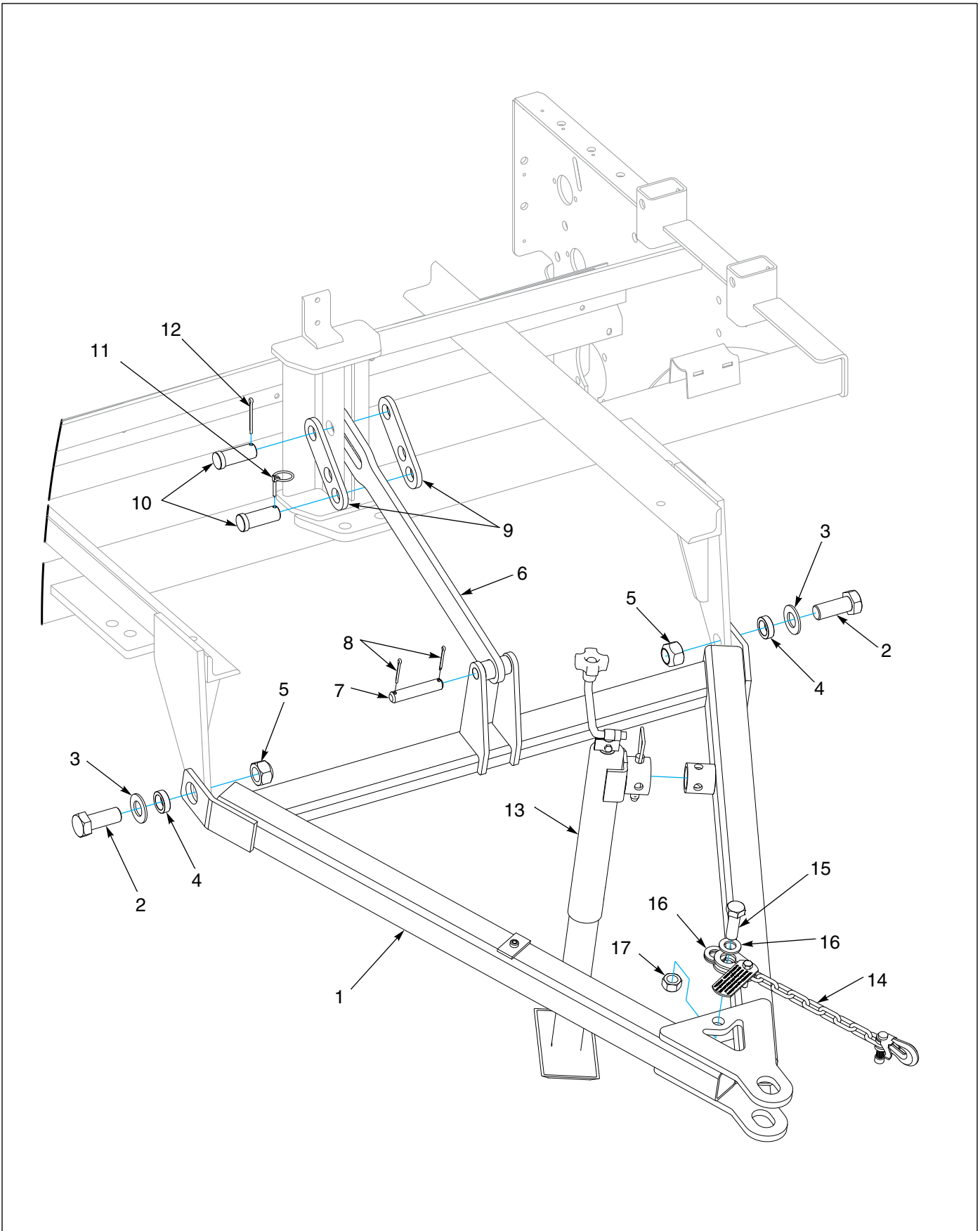


Figure 2-2: Drawbar Assembly

Drawbar Assembly

ITEM	PART NUMBER	DESCRIPTION	QTY
1	2P973	DRAWBAR, FPS6	1
2	151528	SCREW, HXCP 1-8 X 2-1/2, GR5, ZP	2
3	1-861-010032-24	WASHER, FL 1" NARROW, ZP	2
4	2P461	TUBE, RND 1.031 X 1.5 X 0.438	2
5	1-512-010005-19	NUT, 1-8, SLFLKG GRB, ZP	2
6	2P987	LINK, DRAWBAR WLD	1
7	9J848	PIN, 0.75 X 3.875 H2	1
8	1C205	COTTER PIN, 5/32 X 1-1/2, ZP	2
9	2P989	STRAP	2
10	8D099	CLEVIS PIN, 1.0 X 2.5	2
11	5D129	KLIK-PIN, 3/16 X 1-1/4	1
12	6C468	COTTER PIN, 3/16 X 2, ZP	1
13	3J880	JACK	1
14	141433	SAFETY CHAIN 11,000 LB	1
15	1-654-010061-06	SCREW, HX CP, 3/4-10 X 2-1/4, GR5, ZP	1
16	1-861-010032-20	WASHER, FLAT 3/4 SAE, ZP	3
17	1-512-010005-15	NUT, LOCK 3/4-10, GRB, ZP	1

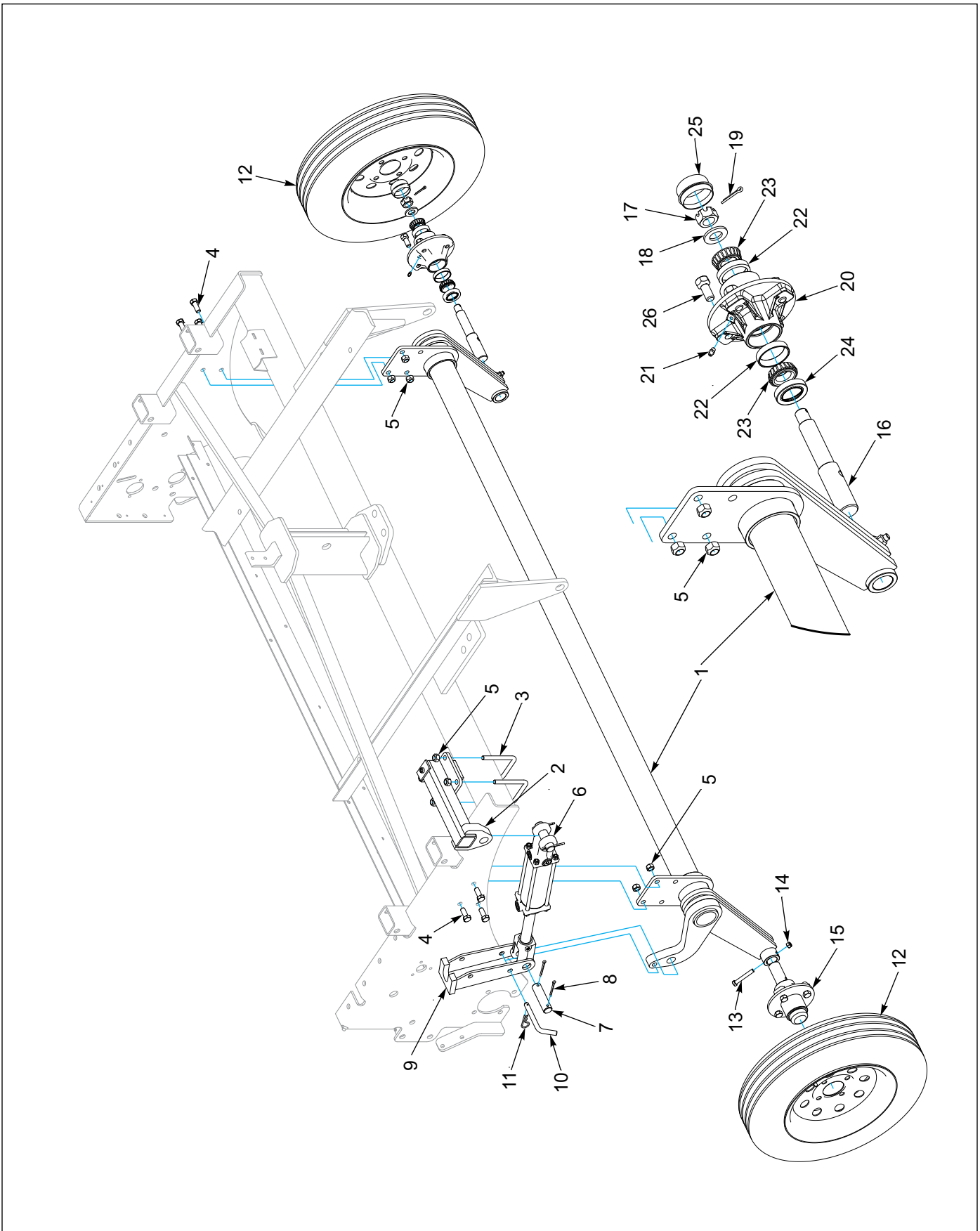


Figure 2-3: RockShaft Assembly with Hydraulic Cylinder

RockShaft Assembly with Hydraulic Cylinder

ITEM	PART NUMBER	DESCRIPTION	QTY
1	2P965	ROCKSHAFT, FPS6	1
2	2P982	MOUNT, CYL WLD	1
3	2P986	U-BOLT, 1/2-13 X 3-1/2 X 4-1/4, ZP	2
4	1-654-010055-02	SCREW, 1/2-13 X 1-1/4, GR5, ZP	6
5	1-512-010005-09	NUT, HEX SLFLKG, 1/2-13, GRB, ZP	10
6	9J440	HYD CYL, 2-1/2 X 6	1
7	5J650	PIN, 1.0 X 3.625 H2	1
8	6C468	COTTER PIN, 3/16 X 2, ZP	2
9	2P990	CYL TRANSPORT LOCK	1
10	3C335	PIN, BENT	1
11	6J448	HAIR PIN COTTER, 1/8	1
12	2P962	MOUNTED WHL & TIRE ASM	2
13	1-654-010051-11	SCREW, HX CP, 3/8-16 X 2-1/2, GR5, ZP	2
14	1-512-010005-05	NUT, HEX SLFLKG 3/8-16, GRB, ZP	2
15	2P960	HUB AND SPINDLE ASM (INCLUDES ITEMS 16-26)	2
16	2P961	SPINDLE, 1-1/4 X 7-3/4	1
17	3C173	NUT, HEX SLOTTED 3/4-16, ZP	1
18	1-861-010032-20	WASHER, FLAT 3/4 SAE, ZP	1
19	3C350	COTTER PIN, 5/32 X 1, ZP	1
20	2P958	HUB (INCLUDES ITEMS 21,22)	1
21	2P959	FIT, GREASE 6MM X 1.0	1
22	9C226	BEARING CUP	2
23	9C227	BEARING CONE	2
24	9C228	SEAL, C/R 12411	1
25	7K545	HUB CAP	1
26	5C100	WHL BLT, HEX 1/2-20 X 1, GR5, ZP	4

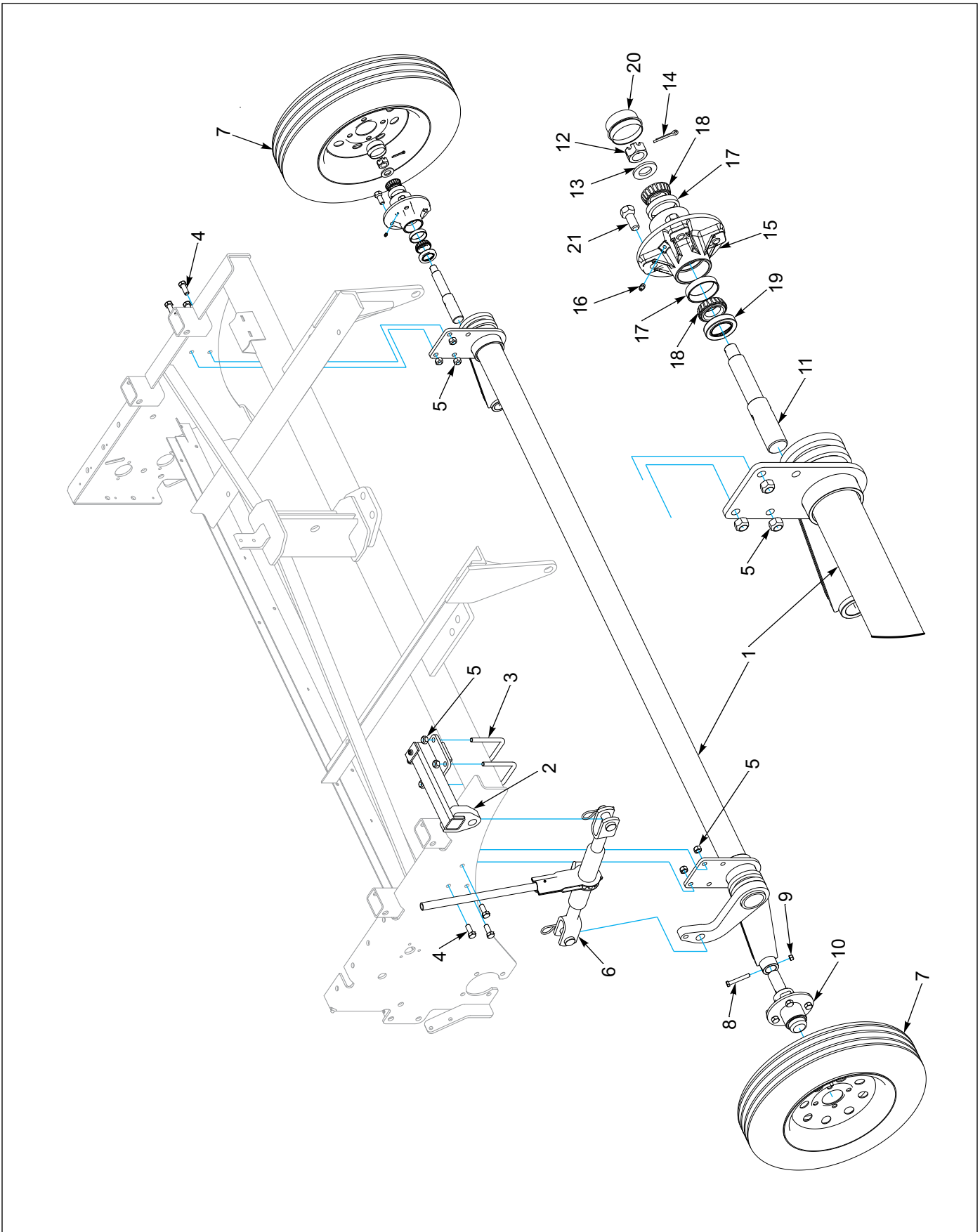


Figure 2-4: RockShaft Assembly with Ratchet

RockShaft Assembly with Ratchet

ITEM	PART NUMBER	DESCRIPTION	QTY
1	2P965	ROCKSHAFT, FPS6	1
2	2P982	MOUNT, CYL WLD	1
3	2P986	U-BOLT, 1/2-13 X 3-1/2 X 4-1/4, ZP	2
4	1-654-010055-02	SCREW, 1/2-13 X 1-1/4, GR5, ZP	6
5	1-512-010005-09	NUT, HEX SLFLKG 1/2-13, GRB, ZP	10
6	1K618	RATCHET JACK	1
7	2P962	MOUNTED WHL & TIRE ASM	2
8	1-654-010051-11	HHCS, 3/8-16 X 2-1/2, GR5, ZP	2
9	1-512-010005-05	NUT, LOCK 3/8-16, GRB, ZP	2
10	2P960	HUB AND SPINDLE ASM (INCLUDES ITEMS 11-21)	2
11	2P961	SPINDLE, 1-1/4 X 7-3/4	1
12	3C173	NUT, HEX SLOTTED 3/4-16, ZP	1
13	1-861-010032-20	WASHER, FLAT 3/4 SAE, ZP	1
14	3C350	COTTER PIN, 5/32 X 1, ZP	1
15	2P958	HUB, 4 BOLT W/CUPS (INCLUDES ITEM 16)	1
16	2P959	FIT, GREASE 6MM X 1.0 OBS	1
17	9C226	BRG CUP, TIMKEN	2
18	9C227	BRG CONE, TIMKEN	2
19	9C228	SEAL, C/R 12411	1
20	7K545	HUB CAP	1
21	5C100	WHL BLT, HEX 1/2-20 X 1, GR5, ZP	4

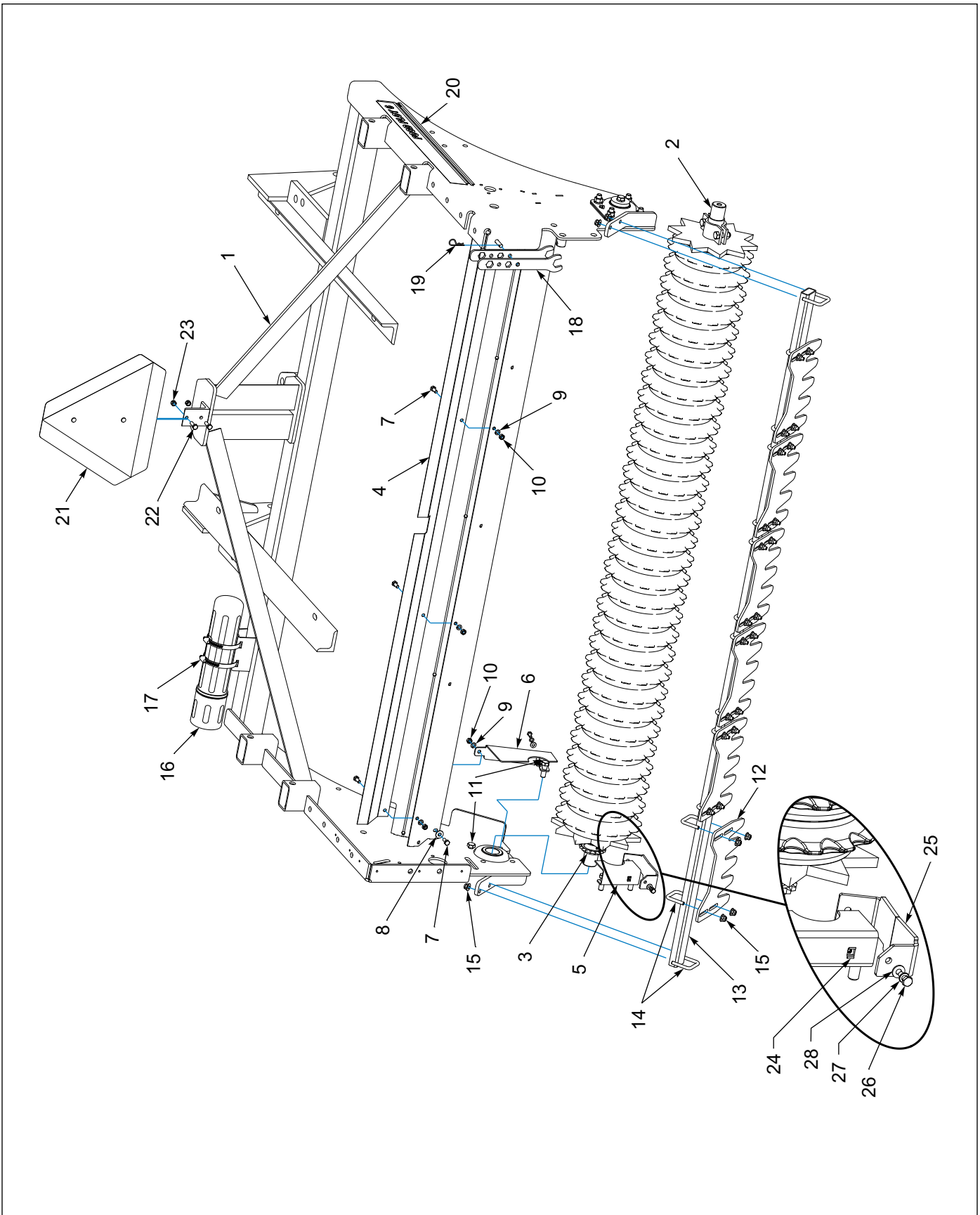


Figure 2-5: Frame, Deflector and Scraper

Frame, Deflector and Scraper

ITEM	PART NUMBER	DESCRIPTION	QTY
1	163324	FRAME, FPS6	1
2	2P002	ROLLER ASM, FPS6	1
3	2P012	SPROCKET, 17 TOOTH	1
4	2P086	DEFLECTOR, SEED	1
5	163316	GUARD, LOWER REAR CHAIN	1
6	163315	GUARD, LOWER FRONT CHAIN	1
7	1-654-010049-03	SCREW, HEX CAP, 5/16-18 X 3/4, GR5, ZP	5
8	1-861-010032-09	WASHER, FLAT 5/16 STD, ZP	1
9	1-861-010034-10	WASHER, LKG 5/16, ZP	5
10	1-512-010007-06	NUT, HEX 5/16-18, ZP	5
11	1-654-010055-03	SCREW, HEX CAP, 1/2-13 X 1-1/2, GR5, ZP	4
12	163320	SCRAPER, 5 BLADE	6
13	163319	TUBE, 2 X 1 X 11GA X 81" LONG	1
14	3P089	U-BOLT, 3 /8-16 X 2-3/8 X 2, ZP	14
15	2P252	NUT, FLANGE NY-LOK 3/8-16	28
16	8K349	CANISTER, MANUAL STORAGE 14	1
17	8K350	HOSE CLAMP, #56 STAINLESS	2
18	6K032	WRENCH, 15/16 LONG	2
19	6C400	HAIR PIN COTTER, 3/32	1
20	2P046	DECAL, FOOD PLOT 6	2
21	2P151	SMV EMBLEM W/BRACKET	1
22	1-654-010049-05	SCREW, HX CP 5/16-18 X 1, GR5, ZP	2
23	104302	NUT, HX SLF-LKG 5/16-18, ZP	2
24	207051	CAGE NUT, 1/4-20	2
25	231008	SHEILD, CHAIN	1
26	1-654-010047-04	HHCS, 1/4-20 X 3/4	2
27	1-861-010034-09	WASHER, LRG, HLCL SPR, 1/4	2
28	1-861-010032-06	WASHER, FLAT 1/4 N ZP	2

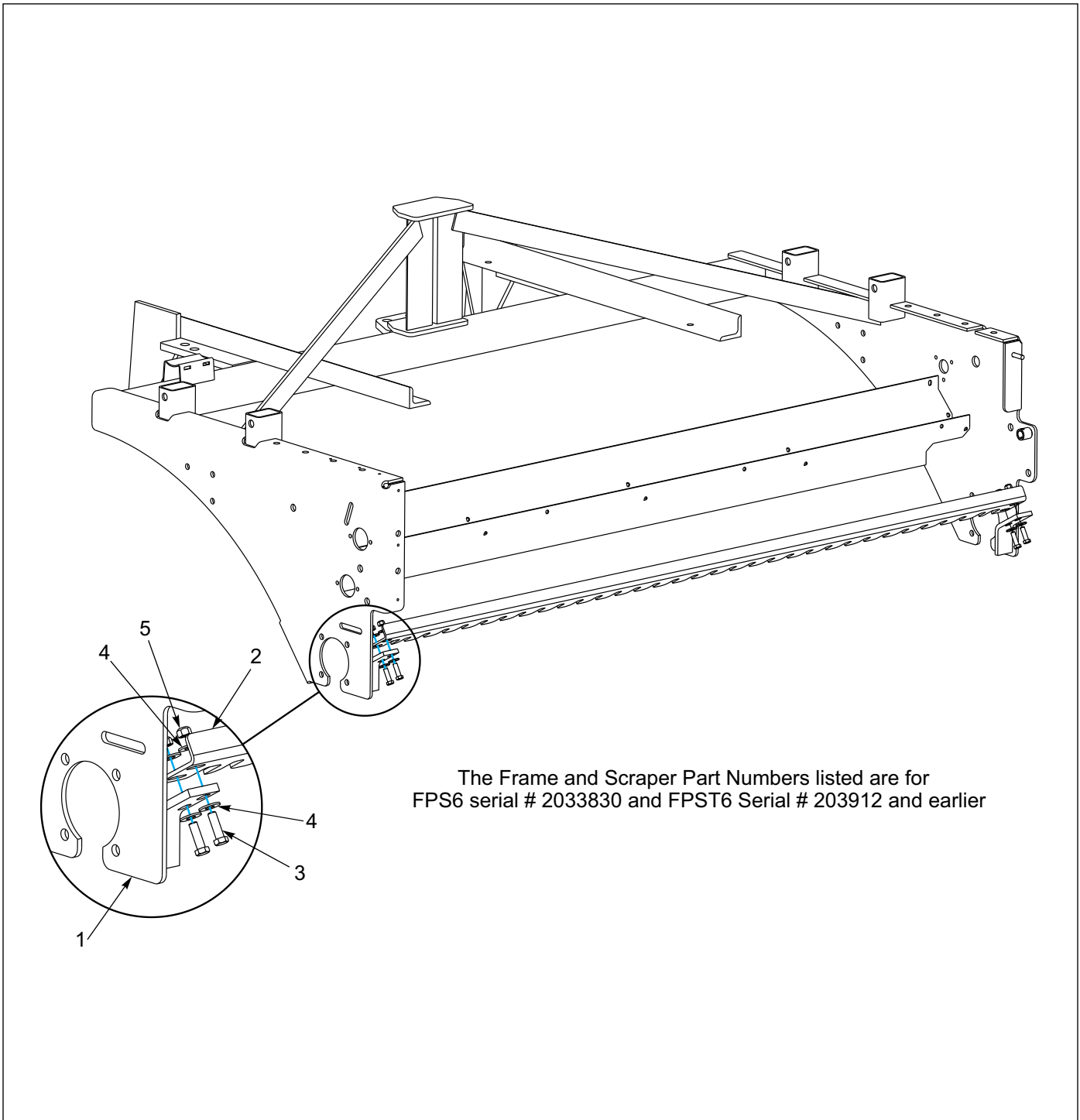


Figure 2-6: Previous Frame and Scraper

Frame and Scraper

ITEM	PART NUMBER	DESCRIPTION	QTY
1	2P001	FRAME, FPS6, FPST6	1
2	2P063	SCRAPER, 6 FOOT FPS WLD	1
3	1-654-010051-06	SCREW, HEX CAP 3/6-16 X 1-1/4", GR5, ZP	4
4	1-861-010032-11	WASHER, FLAT 3/8 STD, ZP	8
5	1-512-010005-05	NUT, HEX, SLFLKG 3/8-16, GRB, ZP	4

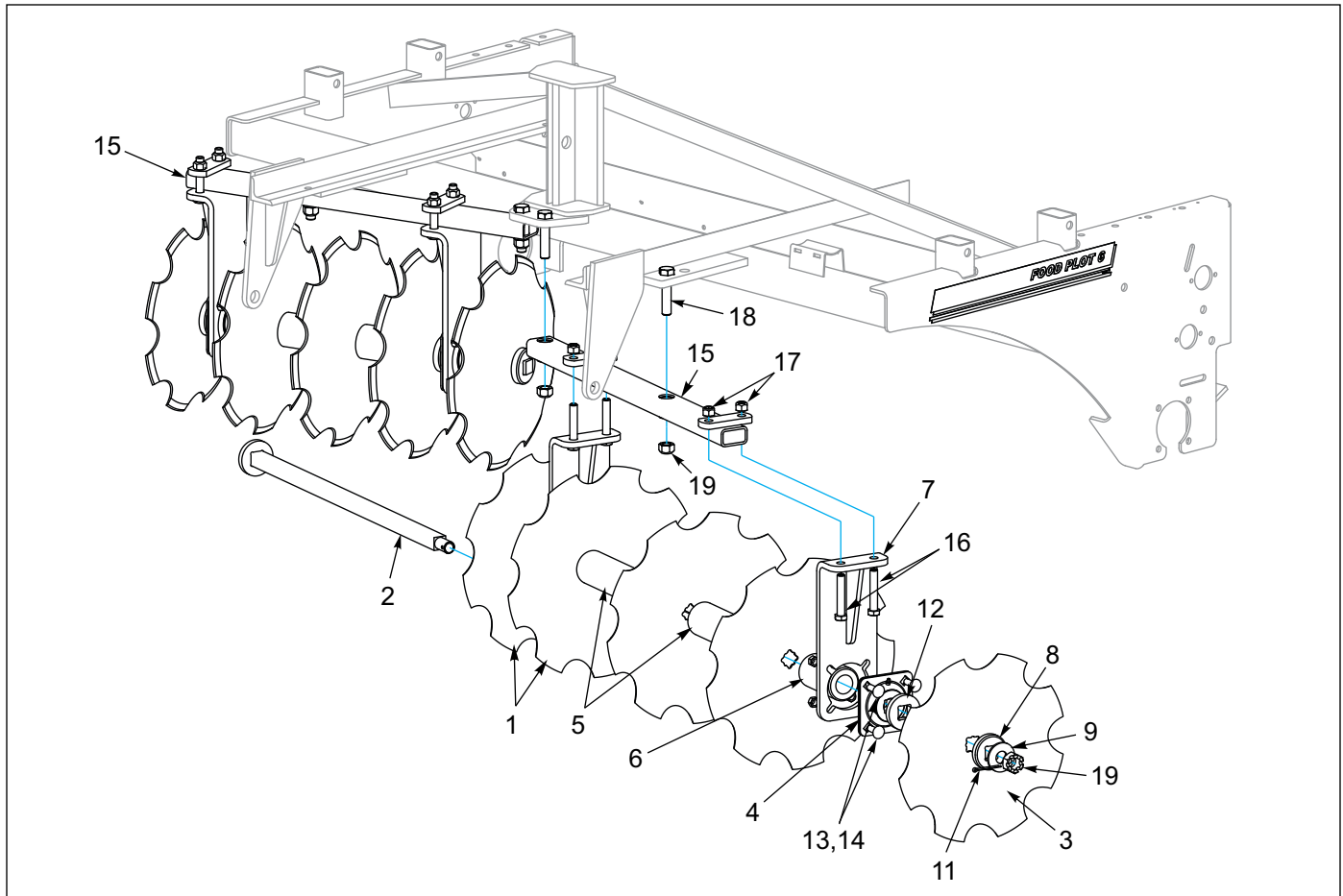


Figure 2-7: Coulters and Coulters Gangs

Coulters and Coulters Gangs

ITEM	PART NUMBER	DESCRIPTION	QTY
	2P025	GANG ASSEMBLY, FPS6 (INCLUDES ITEMS 1-17)	2
1	1P873	NOTCHED DISC, 18" O.D.	4
2	2P018	SHAFT WELDMENT, 1-1/8 SQ	1
3	2P044	NOTCHED DISC, 16" PLOW	1
4	1P872	BEARING, ASSEMBLY, 1-1/8 SQUARE	2
5	2P020	SPOOL, 1-5/8 BORE	2
6	2P007	SPOOL HALF, CONVEX	2
7	2P027	HANGER, BEARING WLD	2
8	2P026	END WASHER, CONVEX	1
9	1-861-010032-25	WASHER, FL 1" WIDE, ZP	3
10	102931	NUT, HEX SLOT 1-8, ZP	1
11	6C468	COTTER PIN, 3/16 X 2, ZP	1
12	2P016	END WASHER	2
13	1-654-010070-03	SCREW, RDHD SQNK, 1/2-13 X 1-1/2, GR5, ZP	8
14	1-512-010005-09	NUT, HEX SLFLKG 1/2-13, GRB	8
15	2P030	FRAME, GANG	1
16	1-654-010059-11	SCREW, HX CP 5/8-11 X 3-1/2, GR5	4
17	1-512-010005-13	NUT, HEX SLFLKG 5/8-11, GRB	4
18	141776	SCREW, HX CP, 3/4-10 X 3-1/2, GR5, ZP	4
19	1-512-010005-15	NUT, HEX SLFLKG 3/4-10, GRB, ZP	4

ILLUSTRATED PARTS LIST

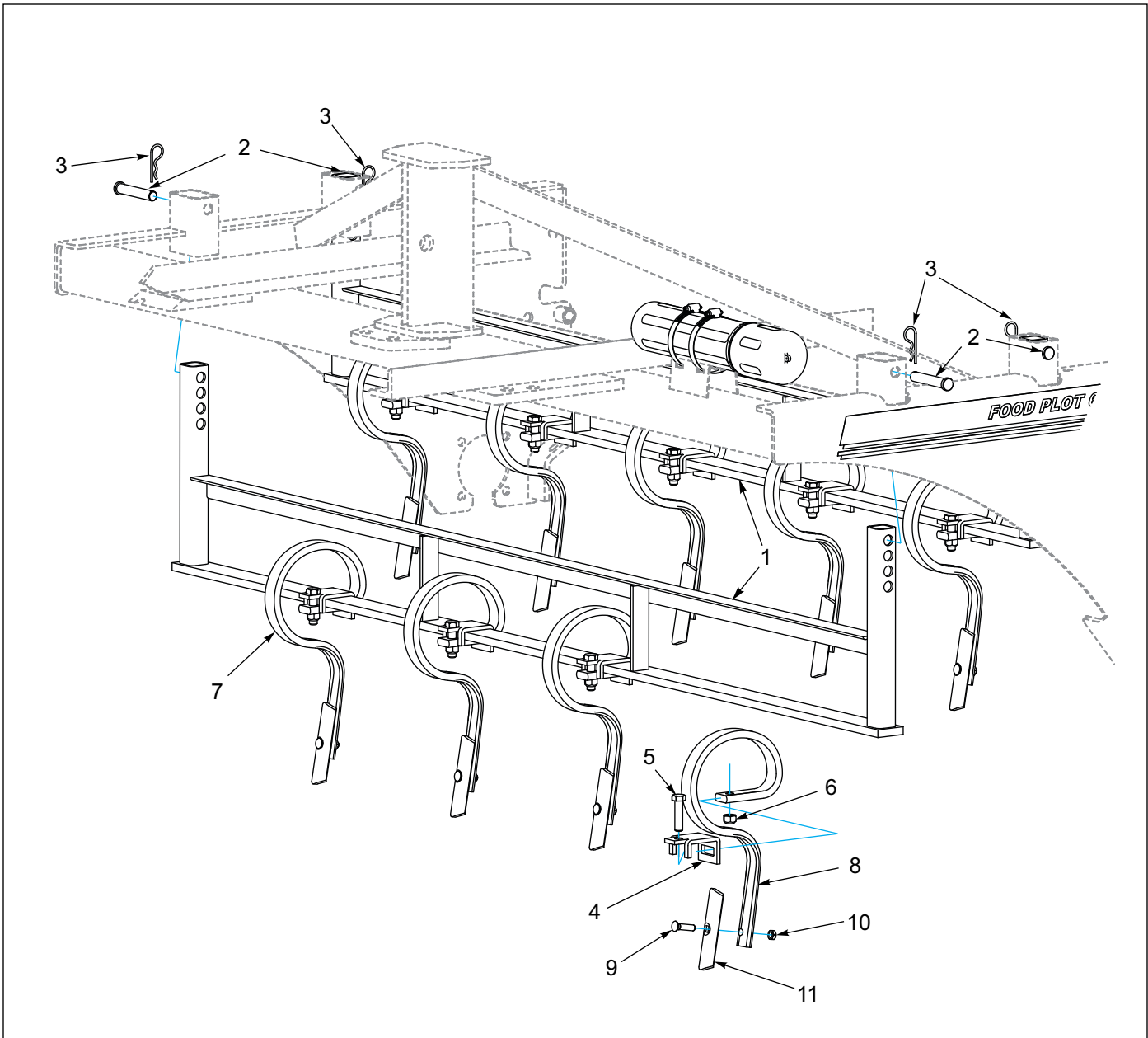


Figure 2-8: S-Tine Assembly

S-Tine Assembly

ITEM	PART NUMBER	DESCRIPTION	QTY
1	2P055	FRAME, S-TINE	1
2	2P075	CLEVIS PIN, 0.625 X 3.5	4
3	6J448	HAIR PIN COTTER, 1/8	4
4	1P871	CLAMP	9
5	1-654-010055-05	SCREW, HEX CAP, 1/2-13 X 2, GR5, ZP	9
6	1-512-010005-09	NUT, HEX SLFLKG 1/2-13, GRB, ZP	9
7	1P870	S-TINE, 10" W/POINT (INCLUDES ITEMS 8,9,10 AND 11)	9
8	2P014	S-TINE, 10"	9
9	7D728	CULTIVATOR BOLT 3/8-16 X 1-3/4	9
10	5J616	FLANGE LOCK NUT 3/8-16	9
11	2P015	POINT, REVERSIBLE	9

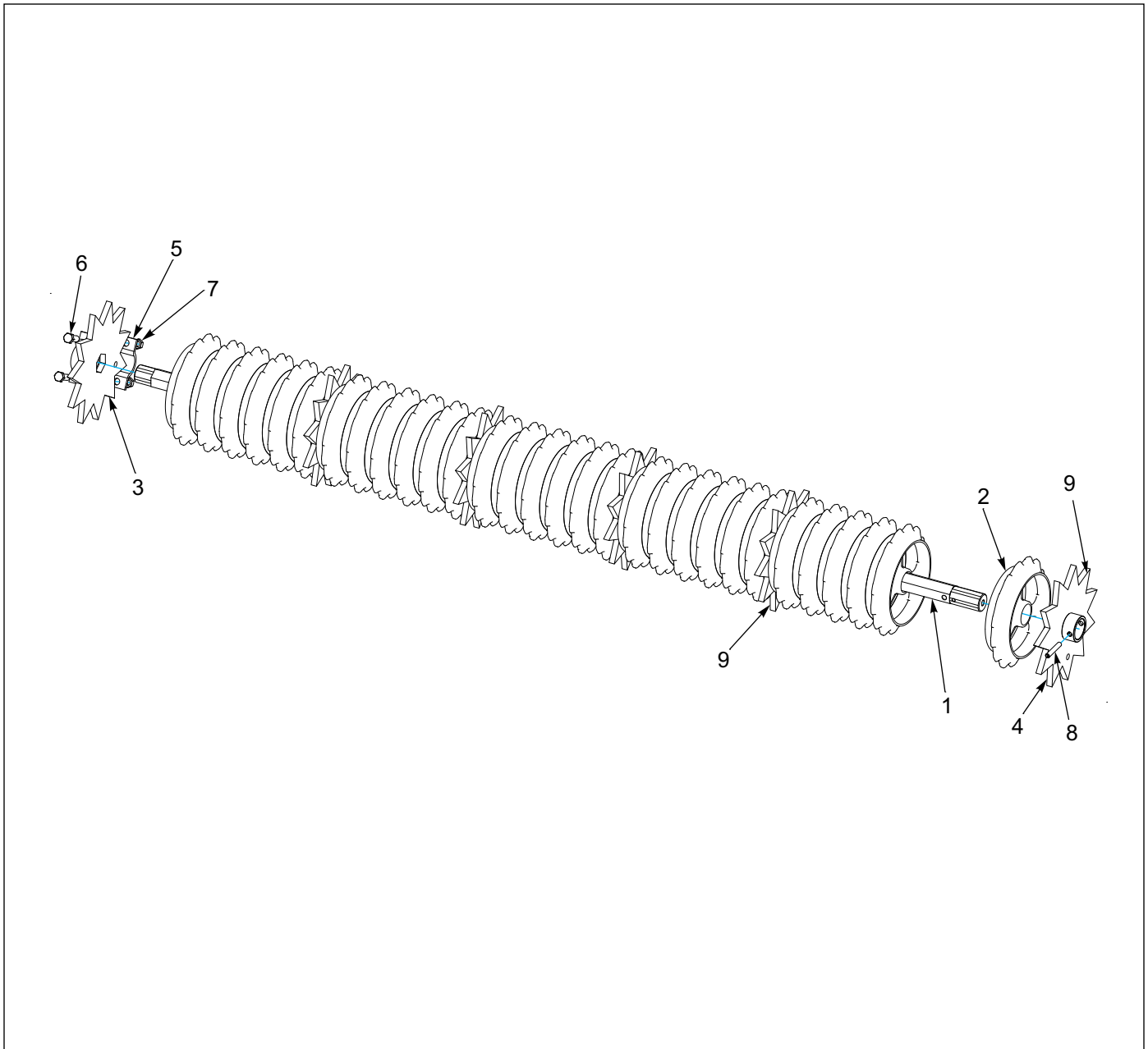


Figure 2-9: Positive Drive Roller (Optional)

Positive Drive Roller Kit (Optional)

ITEM	PART NUMBER	DESCRIPTION	QTY
	163308	POSITIVE DRIVE ROLLER ASSEMBLY (INCLUDES ITEMS 1- 9)	1
1	163309	SHAFT, 1-1/2 HEX ROLLER	1
2	5C284	SAND WHEEL (1 3/4" SHAFT)	30
3	163310	SPROCKET, STAR CLAMP END	1
4	163311	SPROCKET, STAR COLLAR END	1
5	2K656	CLAMP, PAINTED	1
6	1-654-010055-03	SCREW, HEX CAP 1/2-13 X 1-1/2, GR5, ZP	2
7	1-512-010005-09	NUT, HEX SLFLKG 1/2-13, GRB, ZP	2
8	3P270	ROLL PIN, 3/8 X 2 1/4", ZP	1
9	163313	SPROCKET, STAR PAINTED	4

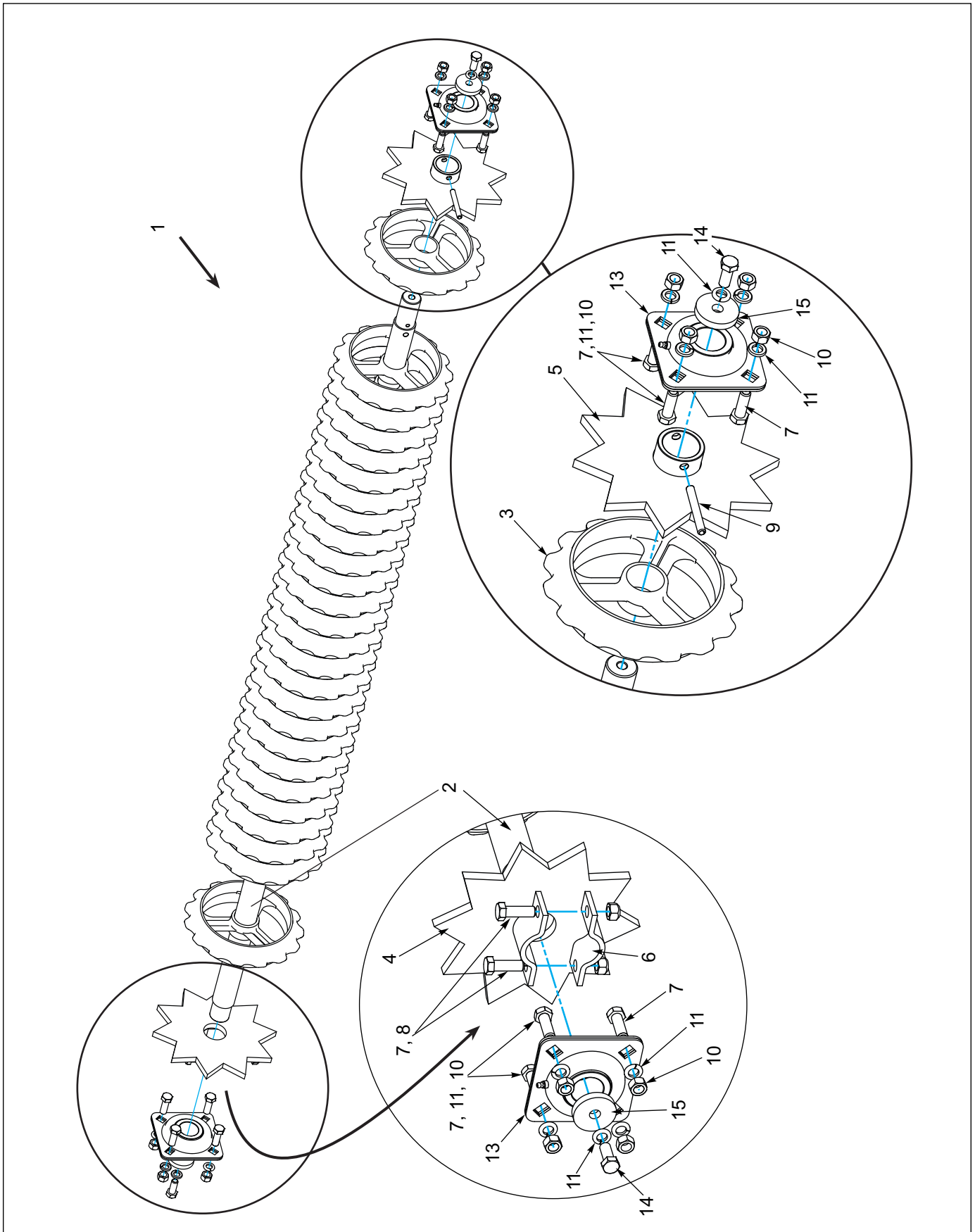


Figure 2-10: Roller Assembly

Roller Assembly

ITEM	PART NUMBER	DESCRIPTION	QTY
1	2P002	ROLLER ASSEMBLY, FPS6 (INCLUDES ITEMS 2- 9)	1
2	2P008	SHAFT, ROLLER	1
3	5C284	SAND WHEEL (1-3/4" SHAFT)	31
4	2P004	SPROCKET, STAR WLD	1
5	2P009	SPROCKET, STAR COLLAR	1
6	2K656	CLAMP PAINTED	1
7	1-654-010055-03	SCREW, HEX CAP, 1/2-13 X 1-1/2, GR5, ZP	10
8	1-512-010005-09	NUT, HEX SLFLKG 1/2-13, GRB, ZP	2
9	3P270	ROLL PIN, 3/8 X 2 1/4", ZP	1
10	1-512-010007-09	NUT, HEX 1/2-13, ZP	8
11	1-861-010034-13	WASHER, LKG HLCL SPR, 1/2, ZP	10
13	2K316	BRG ASSEMBLY, 1-1/2 BORE	2
14	104665	SCREW, HX CP 1/2-20 X 1-1/4, GR5, ZP	2
15	9J338	WASHER, 0.5 X 2.063 X 0.375, ZP	2

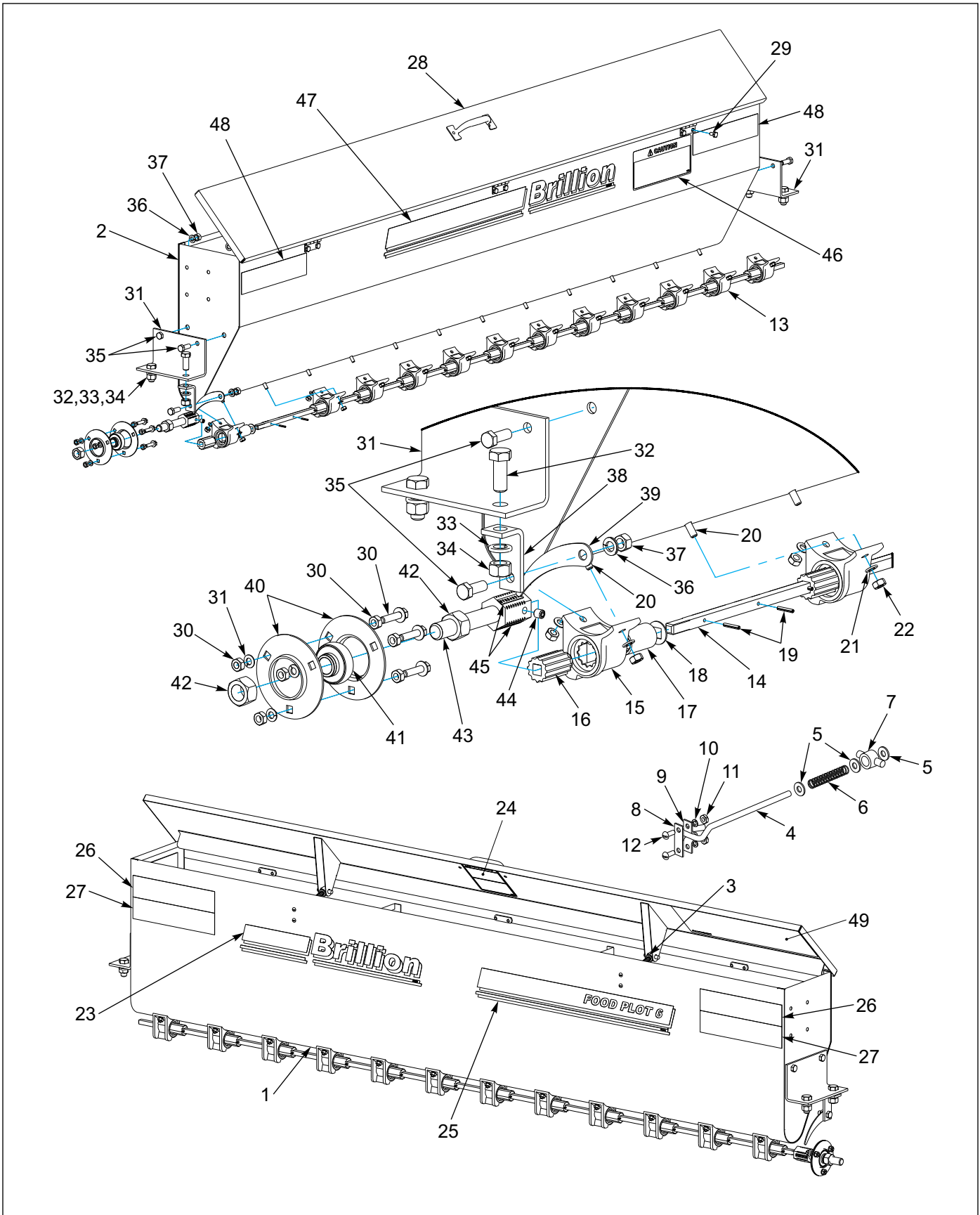


Figure 2-11: Seed Box Assembly

Seed Box Assembly

ITEM	PART NUMBER	DESCRIPTION	QTY
1	2P032	FPS6 SEEDBOX ASSEMBLY (INCLUDES ITEMS 2,3, 8-13 AND 20-22)	1
2	2K451	SEEDBOX, SMALL SEED 6 FOOT	1
3	1C199	COVER LOCK ASSEMBLY (INCLUDES ITEMS 4-7)	2
4	1C192	COVER LOCK STEM	1
5	1-861-010032-06	WASHER, FLAT 1/4 SAE, ZP/CD	3
6	1C212	BOX COVER SPRING	1
7	1C193	COVER LOCK PIVOT	1
8	7D937	WEAR STRIP	2
9	7D938	COVER LOCK CLIP	2
10	1-861-010034-07	WASHER, LKG HLCL SPR10, ZP	4
11	1-512-010007-03	NUT, HEX #10-24, ZP	4
12	1C213	RND HD, 10-24 X 1/2, ZP	4
13	2P031	FPS6 SEEDMETER ASSEMBLY (INCLUDES ITEMS 14-19)	1
14	7K413	SSP6 SEEDMETER SHAFT	1
15	4C589	PLASTIC SEED CUP	12
16	1C242	FEED ROLL	12
17	1C243	FEED CUT-OFF	12
18	1C245	FEED CUT-OFF WASHER	12
19	1C272	ROLL PIN, 1/8 X 3/4, ZP	24
20	4C750	RND HD, 1/4-20 X 5/8, ZP	24
21	1-861-010034-09	WASHER, LKG HLCL SPR, 1/4, ZP	24
22	1-512-010007-05	NUT, HEX 1/4-20, ZP	24
23	4K036	DECAL, BRILLION 20	1
24	2K123	DECAL, WARNING	1
25	2P046	DECAL, FOOD PLOT 6	1
26	2J430	DECAL, RED REFLECTIVE	2
27	8K597	DECAL, RED-ORANGE	2
28	2K453	COVER, 6 FOOT	1
29	104877	SCREW, HX CP 1/4-20 X 1/2, GR5, ZP	6
30	7K237	FHHCS, 1/4-20 X 1, GR5	3
31	7K419	MOUNTING BRACKET	2
32	1-654-010055-02	SCREW, 1/2-13 X 1-1/4, GR5, ZP	4
33	1-861-010034-13	WASHER, LKG HLCL SPR 1/2, ZP	4
34	1-512-010007-09	NUT, HEX 1/2-13, ZP	4
35	1-654-010051-05	SCREW, HEX CAP 3/8-16 X 1, GR5, ZP	5
36	1-861-010034-11	WASHER, LKG HLCL SPR, 3/8, ZP	5
37	1-512-010007-07	NUT, HEX 3/8-16, ZP	5
38	7K442	BRACKET	1
39	6K442	POINTER	1
40	9D816	FLANGETTE HALF, 3 BLT	2
41	5K989	BRG, 5/8 BORE W/O COLLAR	1
42	1-512-010007-11	NUT, HEX 5/8-11, ZP	2
43	6K391	SEED SHAFT EXTENSION	1
44	107-0975	SET SCREW, 5/16-18 X 3/8 CUP PT	1
45	6K008	DECAL, SEEDER SHAFT NUMBER	3
46	8J310	DECAL, CAUTION	1
47	4K037	DECAL, BRILLION 32	1
48	2J431	DECAL, AMBER REFLECTIVE	2
49	2P104	METER BOX, SEED CHART	1

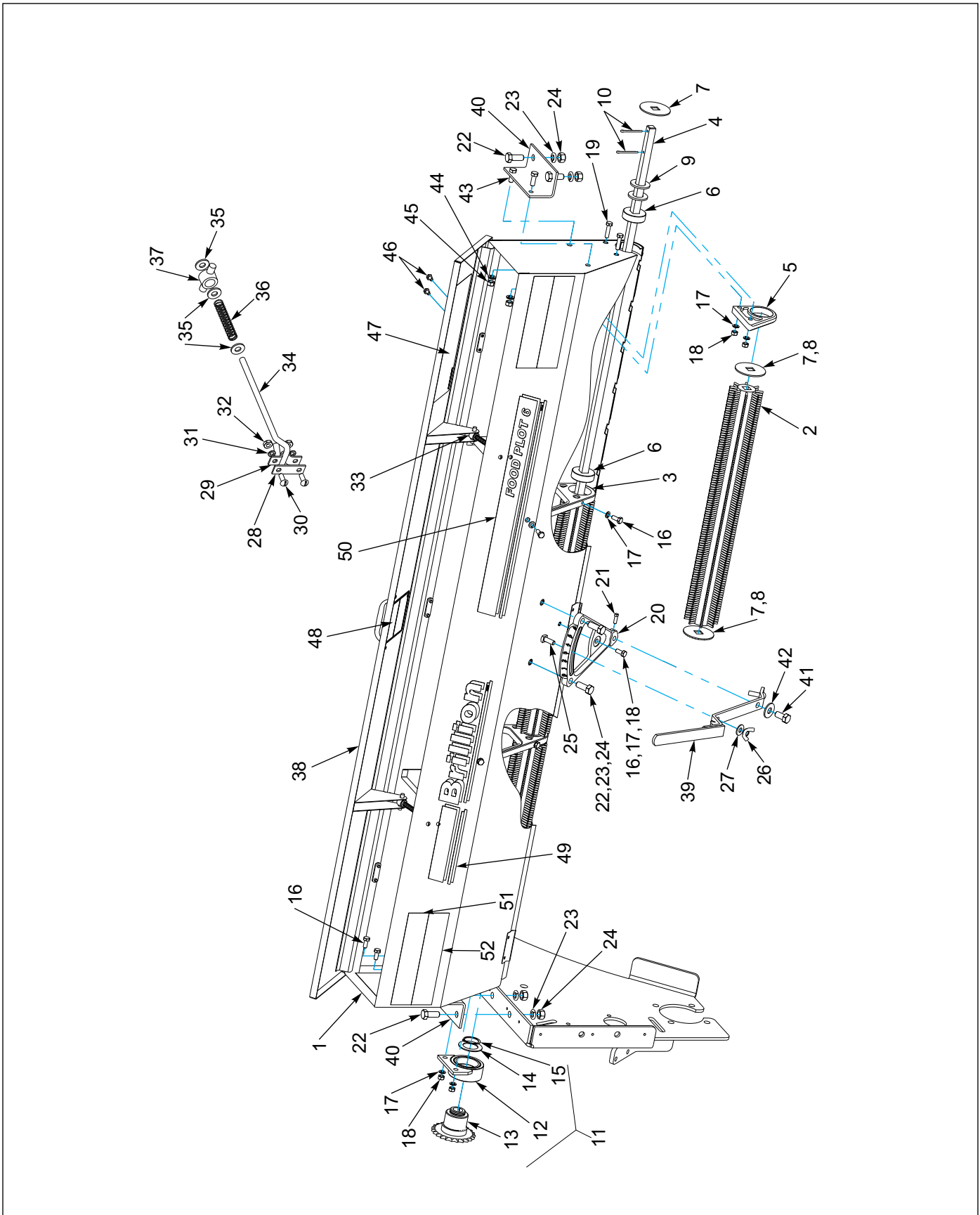


Figure 2-12: Agitator Box Assembly

Agitator Seedbox Assembly

ITEM	PART NUMBER	DESCRIPTION	QTY
	2P177	SEEDBOX ASM, REAR 6 FT AGITATOR (INCLUDES 1-11,16-33)	1
1	2K452	AGITATOR SEEDBOX, 6 FT	1
2	2P173	BRUSH, 8 ROW, 1.63 DIA CORE	3
3	1C339	AGITATOR BEARING	2
4	7K407	SHAFT	1
5	9D793	BOX END BEARING	1
6	2C808	BUSHING	3
7	2C809	WASHER, REAR BOX REEL, 12GA	7
8	8J564	WASHER, REAR BOX REEL, 14GA	2
9	1-861-010032-22	WASHER, FLT 7/8 SAE, ZP	2
10	1C205	COTTER PIN, 5/32 X 1-1/2, ZP	2
11	7K677	SPROCKET ASM, AGITATOR (INCLUDES 12-15)	1
12	7K408	BEARING CARRIER	1
13	7K409	SPROCKET & HUB, 23T	1
14	7C086	MACH BUSH, 1.375 X 2.125 X 14GA	1
15	7K017	RETAINING RING, 5100-137	1
16	1-654-010049-03	SCREW, HX CP, 5/16-18 X 3/4, GR5, ZP	11
17	1-861-010034-10	WASHER, LKG 5/16, ZP	13
18	1-512-010007-06	NUT, HEX 5/16-18, ZP	5
19	1-654-010049-06	SCREW, HX CAP, 5/16-18 X 1-1/4, GR5, ZP	2
20	2C662	SHIFTER PLATE RH	1
21	1-654-010077-2	SET SCREW, SQHD 1/4-20 X 3/4, ZP	1
22	1-654-010055-02	SCREW, 1/2-13UNC X 1-1/4, GR5, ZP	6
23	1-861-010034-13	WASHER, LKG HLCL SPR 1/2, ZP	6
24	1-512-01007-09	NUT, HEX 1/2-13, ZP	6
25	1C606	SQ HD BLT, 3/8-16 X 1, GR2, ZP	1
26	1C217	NUT, WING 3/8-16, ZP	1
27	1-861-010032-11	WASHER, FLAT 3/8 STD, ZP	1
28	7D937	WEAR STRIP	2
29	7D938	COVER LOCK CLIP	2
30	1C213	RND HD, #10-24 X 1/2, ZP	4
31	1-861-010034-07	WASHER, LKG HLCL SPR #10, ZP	4
32	1-512-010007-03	NUT, HEX #10-24, ZP	4
33	1C199	COVER LOCK ASM (INCLUDES 34-37)	2
34	1C192	COVER LOCK STEM	1
35	1-861-010032-06	WASHER, FLAT 1/4 SAE, ZP	3
36	1C212	BOX COVER SPRING	1
37	1C193	COVER LOCK PIVOT	1
38	2K453	COVER, 6 FT	1
39	9J422	SHIFTER HANDLE	1
40	2P085	MOUNTING BRACKET	2
41	1-654-010055-01	SCREW, HX CP, 1/2-13 X 1, GR5, ZP	1
42	1-861-010032-15	WASHER, FLAT 1/2 STD, ZP	1
43	1-654-010051-05	SCREW, HEX CAP, 3/8-16 X 1, GR5, ZP	4
44	1-861-010034-11	WASHER, LKG HLCL SPR 3/8, ZP	4
45	1-512-010007-07	NUT, HEX 3/8-16, ZP	4
46	104877	SCREW, HX CP 1/4-20UNC X 1/2, GR5, ZP	6
47	2P178	DECAL, SEED CHART FPS6 BRUSH	1
48	2K123	DECAL, WARNING	1

ILLUSTRATED PARTS LIST

Agitator Seedbox Assembly

ITEM	PART NUMBER	DESCRIPTION	QTY
49	4K036	DECAL, BRILLION 20	1
50	2P046	DECAL, FOOD PLOT 6	1
51	528933	DECAL, RED-REFLECTIVE	1
52	528938	DECAL, RED-ORANGE	1

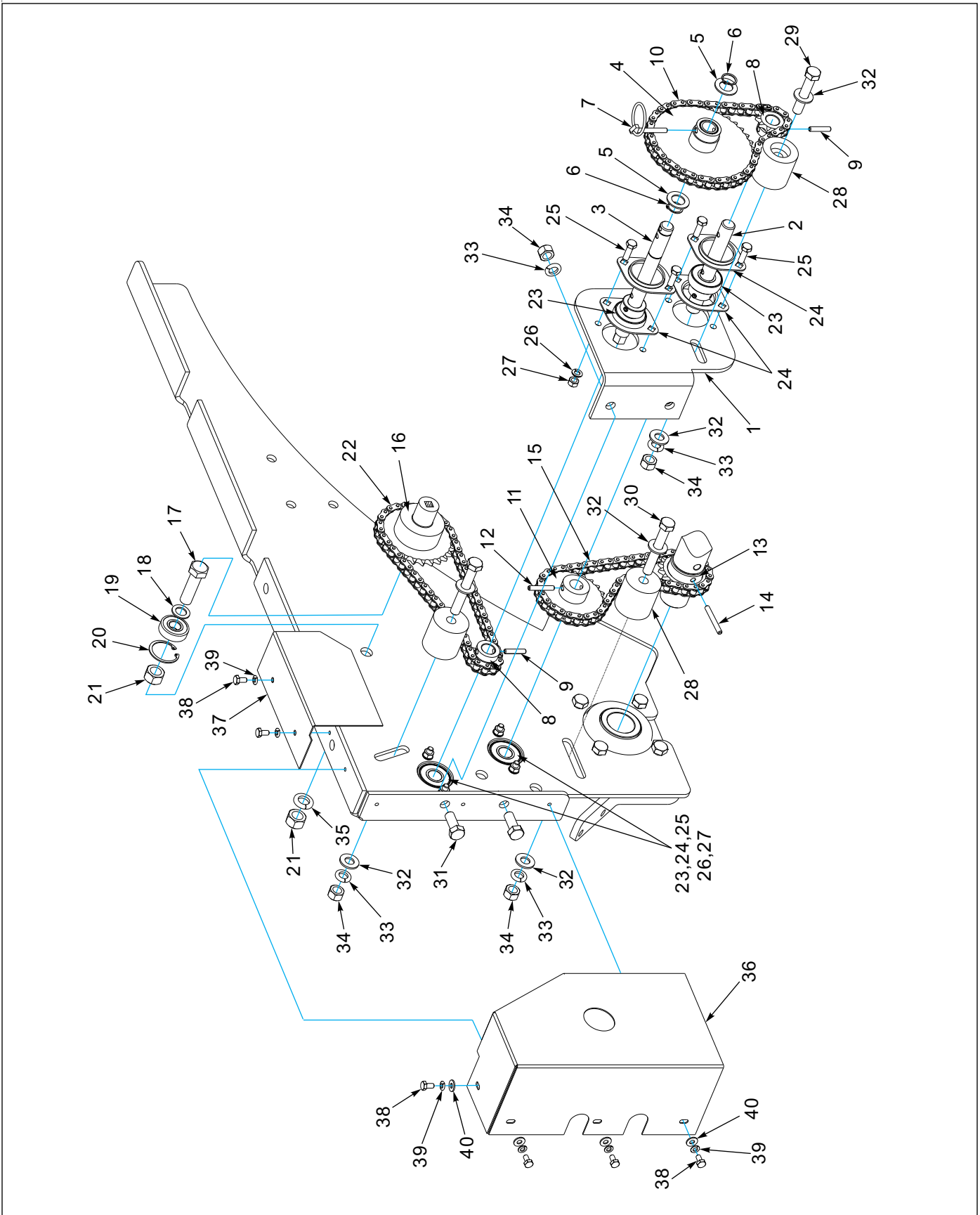


Figure 2-13: Meter Box Drive Assembly

Meter Box Drive Assembly

ITEM	PART NUMBER	DESCRIPTION	QTY
1	2P082	MOUNT, TRANSMISSION	1
2	2P021	SHAFT, TRANSMISSION INPUT	1
3	2P076	SHAFT, TRANSMISSION OUTPUT	1
4	2P023	SPROCKET, 37T W/BUSHING	1
5	8C381	MACH BUSH, 0.75 X 1.25 X 14GA	2
6	7K016	RETAINING RING, TRUARC #5100-75	2
7	5D110	KLIK-PIN, 1/4 X 1-3/4	1
8	2P019	SPROCKET, #40B 10 X 3/4 BORE	2
9	7C285	ROLL PIN, 1/4 X 1-1/4	2
10	2P088	ROLLER CHAIN, #40 X 46 PITCHES	1
11	9D854	SPROCKET, #40B 23 X 3/4 BORE	1
12	1C659	ROLL PIN, 1/4 X 1-1/2	1
13	2P012	SPROCKET, 17 TOOTH	1
14	2D894	ROLL PIN, 1/4 X 2, ZP	1
15	2P067	ROLLER CHAIN, #40 X 52 PITCHES	1
-	7K429	SPROCKET ASM, 26T (INCLUDES 16-21)	1
16	7K423	SPROCKET AND HUB, 26T	1
17	1-654-010059-06	SCREW, HEX CAP, 5/8-11 X 2-1/4, GR5, ZP	1
18	8C892	MACH BUSH, 5/8 X 1 X 14GA	1
19	7K114	BALL BEARING	1
20	7K439	RETAINING RING, N5000-156	1
21	1-512-010007-11	NUT, HEX 5/8-11, ZP	2
22	2P089	ROLLER CHAIN, #40 X 56 PITCHES	1
23	1D598	BRG, 3/4 BORE W/COLLAR	4
24	2K503	FLANGETTE HALF, 2 BLT	8
25	1-654-010049-05	SCREW, HX CP 5/16-18 X 1, GR5, ZP	8
26	1-861-010034-10	WASHER, LKG 5/16, ZP	8
27	1-512-010007-06	NUT, HEX 5/16-18, ZP	8
28	2K957	IDLER, 2 X 2	3
29	101510	SCREW, HX CP, 1/2-13 X 2-3/4, GR5, ZP	1
30	1-654-010055-11	SCREW, HX CP, 1/2-13 X 3-1/2, GR5, ZP	2
31	1-654-010055-02	SCREW, 1/2-13 X 1-1/4, GR5, ZP	2
32	1-861-010032-14	WASHER, FLAT 1/2 SAE, ZP	6
33	1-861-010034-13	WASHER, LKG SPR 1/2, ZP	5
34	1-512-010007-09	NUT, HEX 1/2-13, ZP	5
35	1-861-010034-15	WASHER, LKG HLCL SPR 5/8, ZP	1
36	2P083	COVER, TRANSMISSION	1
37	2P084	COVER, CHAIN	1
38	104877	SCREW, HX CP 1/4-20 X 1/2, GR5, ZP	6
39	1-861-010034-09	WASHER, LKG HLCL SPR, 1/4, ZP	6
40	1-861-010032-06	WASHER, FLT 1/4 SAE, ZP	4

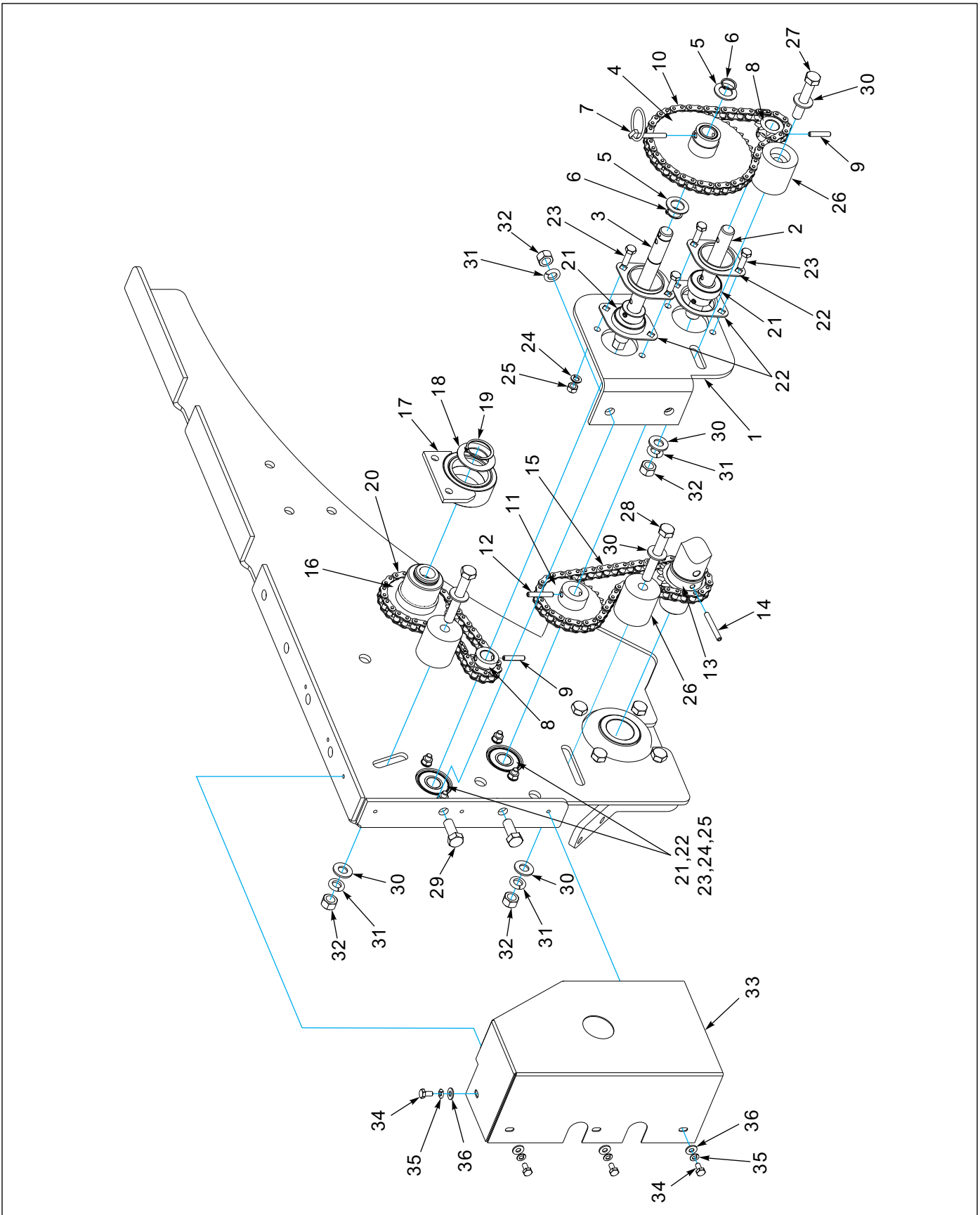


Figure 2-14: Agitator Box Drive Assembly

Agitator Box Drive Assembly

ITEM	PART NUMBER	DESCRIPTION	QTY
1	2P082	MOUNT, TRANSMISSION	1
2	2P021	SHAFT, TRANSMISSION INPUT	1
3	2P076	SHAFT, TRANSMISSION OUTPUT	1
4	2P023	SPROCKET, 37T W/BUSHING	1
5	8C381	MACH BUSH, 0.75 X 1.25 X 14GA	2
6	7K016	RETAINING RING, TRUARC #5100-75	2
7	5D110	KLIK-PIN, 1/4 X 1-3/4	1
8	2P019	SPROCKET, #40B 10 X 3/4 BORE	2
9	7C285	ROLL PIN, 1/4 X 1-1/4	2
10	2P088	ROLLER CHAIN, #40 X 46 PITCHES	1
11	9D854	SPROCKET, #40B 23 X 3/4 BORE	1
12	1C659	ROLL PIN, 1/4 X 1-1/2	1
13	2P012	SPROCKET, 17 TOOTH	1
14	2D894	ROLL PIN, 1/4 X 2, ZP	1
15	2P067	ROLLER CHAIN, #40 X 52 PITCHES	1
-	7K677	SPROCKET ASM, AGITATOR (INCLUDES 16-19)	1
16	7K409	SPROCKET & HUB, 23T	1
17	7K408	BEARING CARRIER	1
18	7C086	MACH BUSH, 1.375 X 2.125 X 14GA	1
19	7K017	RETAINING RING, 5100-137	1
20	2P786	ROLLER CHAIN, #40 X 40 PITCHES	1
21	1D598	BRG, 3/4 BORE W/COLLAR	4
22	2K503	FLANGETTE HALF, 2 BLT	8
23	1-654-010049-05	SCREW, HX CP 5/16-18 X 1, GR5, ZP	8
24	1-861-010034-10	WASHER, LKG 5/16, ZP	8
25	1-512-010007-06	NUT, HEX 5/16-18, ZP	8
26	2K957	IDLER, 2 X 2	3
27	101510	SCREW, HXCP 1/2-13 X 2-3/4, GR5, ZP	1
28	1-654-010055-11	SCREW, HX CP 1/2-13 X 3-1/2, GR5, ZP	2
29	1-654-010055-02	SCREW, 1/2-13 X 1-1/4, GR5, ZP	2
30	1-861-010032-14	WASHER, FLAT 1/2 SAE, ZP	6
31	1-861-010034-13	WASHER, LKG HLCL SPR 1/2, ZP	5
32	1-512-010007-09	NUT, HEX 1/2-13, ZP	5
33	2P083	COVER, TRANSMISSION	1
34	104877	SCREW, HX CP, 1/4-20UNC X 1/2, GR5, ZP	4
35	1-861-010034-09	WASHER, LKG HLCL SPR 1/4, ZP	4
36	1-861-010032-06	WASHER, FLAT 1/4 SAE, ZP	4

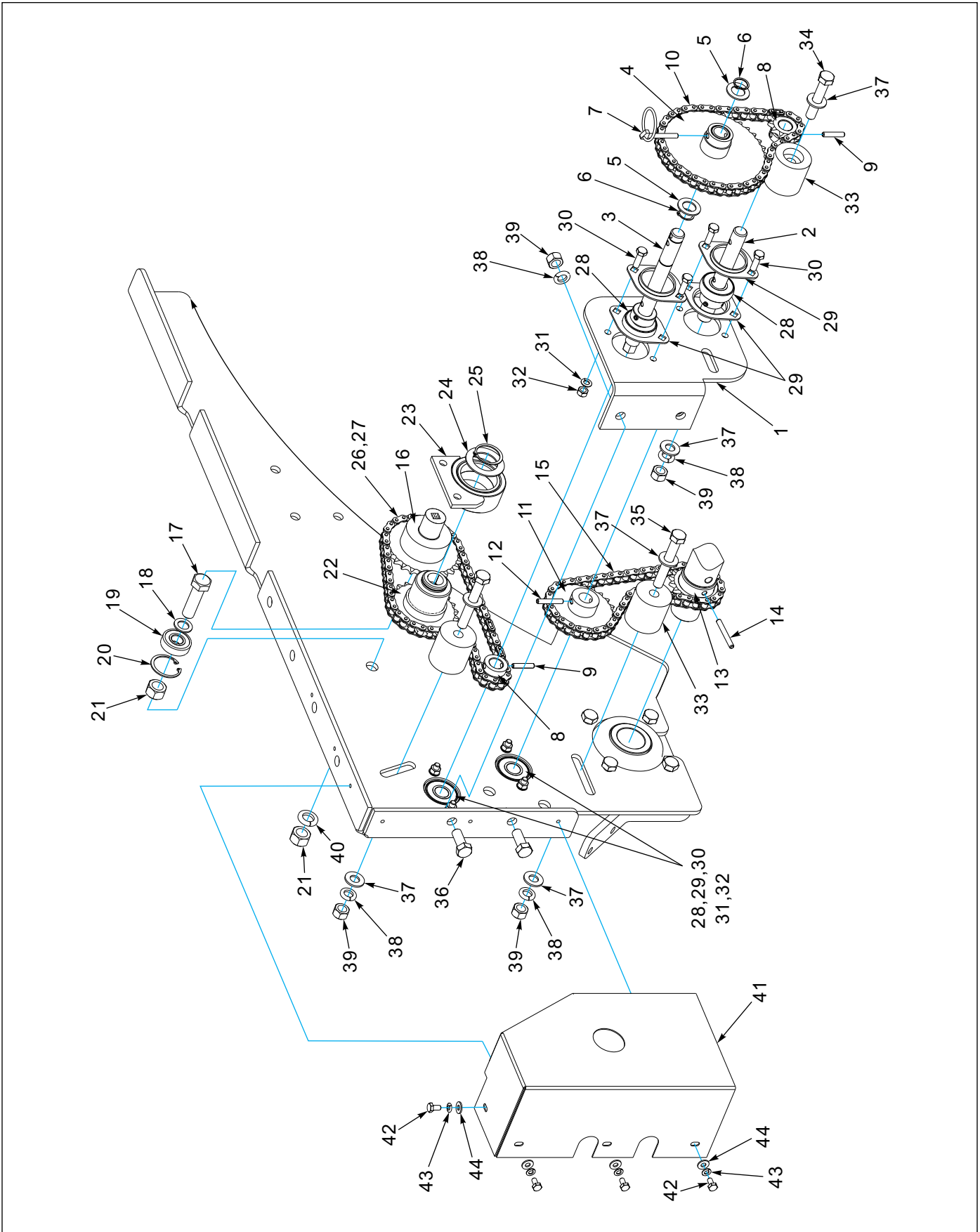


Figure 2-15: Meter and Agitator Box Drive Assembly

Meter and Agitator Box Drive Assembly

ITEM	PART NUMBER	DESCRIPTION	QTY
1	2P082	MOUNT, TRANSMISSION	1
2	2P021	SHAFT, TRANSMISSION INPUT	1
3	2P076	SHAFT, TRANSMISSION OUTPUT	1
4	2P023	SPROCKET, 37T W/BUSHING	1
5	8C381	MACH BUSH, 0.75 X 1.25 X 14GA	2
6	7K016	RETAINING RING, TRUARC #5100-75	2
7	5D110	KLIK-PIN, 1/4 X 1-3/4	1
8	2P019	SPROCKET, #40B 10 X 3/4 BORE	2
9	7C285	ROLL PIN, 1/4 X 1-1/4	2
10	2P088	ROLLER CHAIN, #40 X 46 PITCHES	1
11	9D854	SPROCKET, #40B 23 X 3/4 BORE	1
12	1C659	ROLL PIN, 1/4 X 1-1/2	1
13	2P012	SPROCKET, 17 TOOTH	1
14	2D894	ROLL PIN, 1/4 X 2, ZP	1
15	2P067	ROLLER CHAIN, #40 X 52 PITCHES	1
-	7K429	SPROCKET ASM, 26T (INCLUDES ITEMS 16-21)	1
16	7K423	SPROCKET AND HUB, 26T	1
17	1-654-010059-06	SCREW, HEX CAP 5/8-11 X 2-1/4, GR5, ZP	1
18	8C892	MACH BUSH, 5/8 X 1 X 14GA	1
19	7K114	BALL BEARING	1
20	7K439	RETAINING RING, N5000-156	1
21	1-512-010007-11	NUT, HEX 5/8-11, ZP	2
-	7K677	SPROCKET ASM, AGITATOR (INCLUDES ITEMS 22 - 25)	1
22	7K409	SPROCKET & HUB, 23T	1
23	7K408	BEARING CARRIER	1
24	7C086	MACH BUSH, 1.375 X 2.125 X 14GA	1
25	7K017	RETAINING RING, 5100-137	1
26	2P089	ROLLER CHAIN, #40 X 56 PITCHES	1
27	2P092	ROLLER CHAIN, #40 X 4 PITCHES	1
28	1D598	BRG, 3/4 BORE W/COLLAR	4
29	2K503	FLANGETTE HALF, 2 BLT	8
30	1-654-010049-05	SCREW, HX CP, 5/16-18 X 1, GR5, ZP	8
31	1-861-010034-10	WASHER, LKG 5/16, ZP	8
32	1-512-010007-06	NUT, HEX 5/16-18, ZP	8
33	2K957	IDLER, 2 X 2	3
34	101510	SCREW, HXCP, 1/2-13 X 2-3/4, GR5, ZP	1
35	1-654-010055-11	SCREW, HX CP 1/2-13 X 3-1/2, GR5, ZP	2
36	1-654-010055-02	SCREW, 1/2-13 X 1-1/4, GR5, ZP	2
37	1-861-010032-14	WASHER, FLAT 1/2 SAE, ZP	6
38	1-861-010034-13	WASHER, LKG HLCL SPR 1/2, ZP	5
39	1-512-010007-09	NUT, HEX 1/2-13, ZP	5
40	1-861-010034-15	WASHER, LKG HLCL SPR, 5/8, ZP	1
41	2P083	COVER, TRANSMISSION	1
42	104877	SCREW, HX CP, 1/4-20 X 1/2, GR5, ZP	4
43	1-861-010034-09	WASHER, LKG HLCL SPR, 1/4	4
44	1-861-010032-06	WASHER, FLAT 1/4 SAE, ZP	4

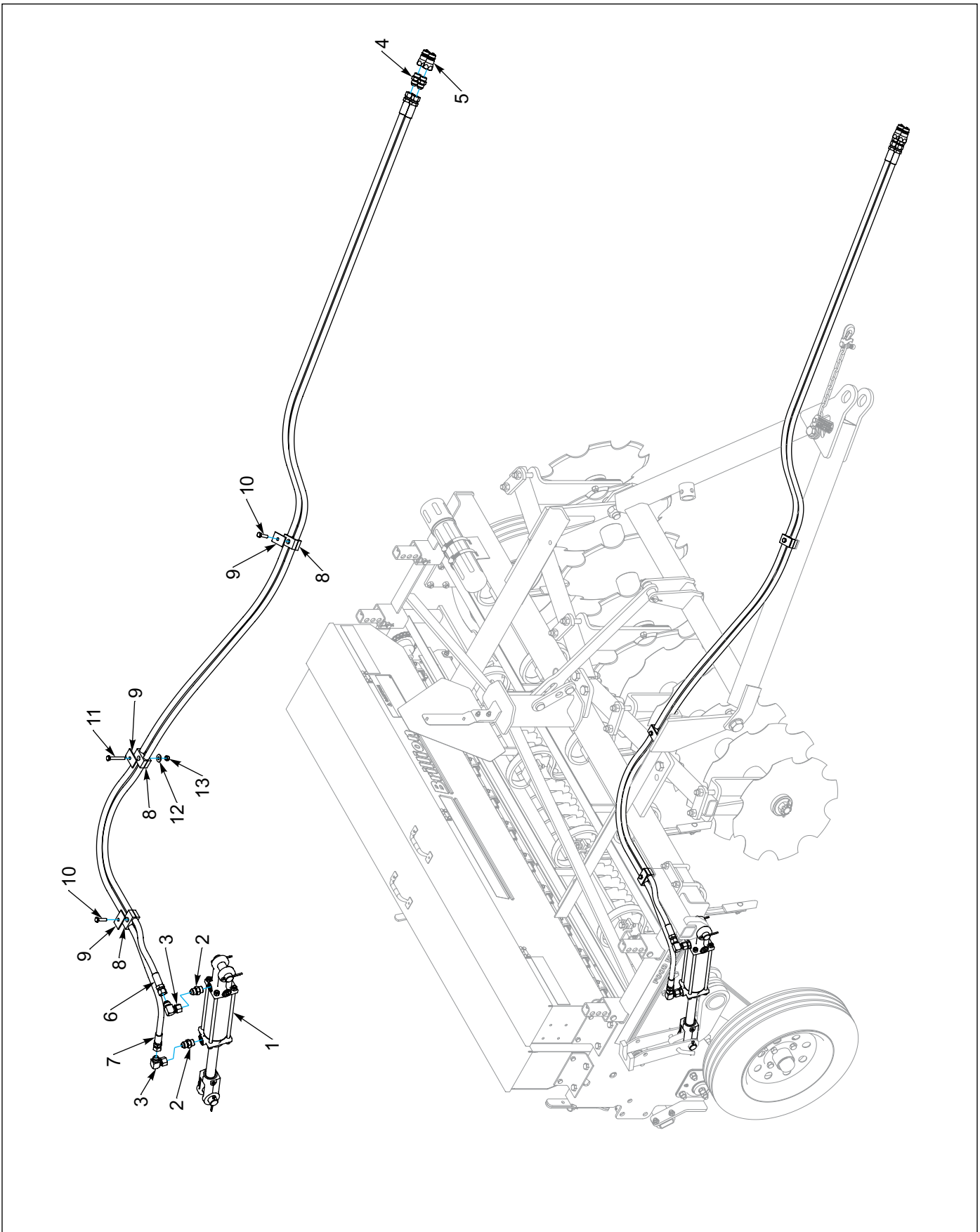


Figure 2-16: Hydraulic Layout

Hydraulic Layout

ITEM	PART NUMBER	DESCRIPTION	QTY
1	9J440	HYDRAULIC CYLINDER 2-1/2 X 6 (See Figure 2-19)	1
2	4K607	RESTRICTOR, 08MJ X 08MOR X .078	2
3	4K608	ELBOW, 08MJ X 08FJS X 90°	2
4	4K602	ADAPTER, 08MJ X 08MOR	2
5	4K912	COUPLING, MALE TIP X 08 FOR	2
6	2P686	HOSE ASSEMBLY, 3/8 X 125	1
7	4K619	HOSE ASSEMBLY, 3/8 X 134	1
8	1P937	TWIN CLAMP PAIR, .67 DIA	3
9	1P938	TWIN TOP PLATE	3
10	1-654-010049-06	SCREW, HX CP, 5/16-18UNC X 1-1/4, GR5, ZP	2
11	108628	SCREW, HX CP, 5/16-18UNC X 2-1/4, GR5, ZP	1
12	1-861-010032-09	WASHER, FLAT 5/16 STD, ZP	1
13	104032	NUT, HX SLF-LKG 5/16-18, ZP	1

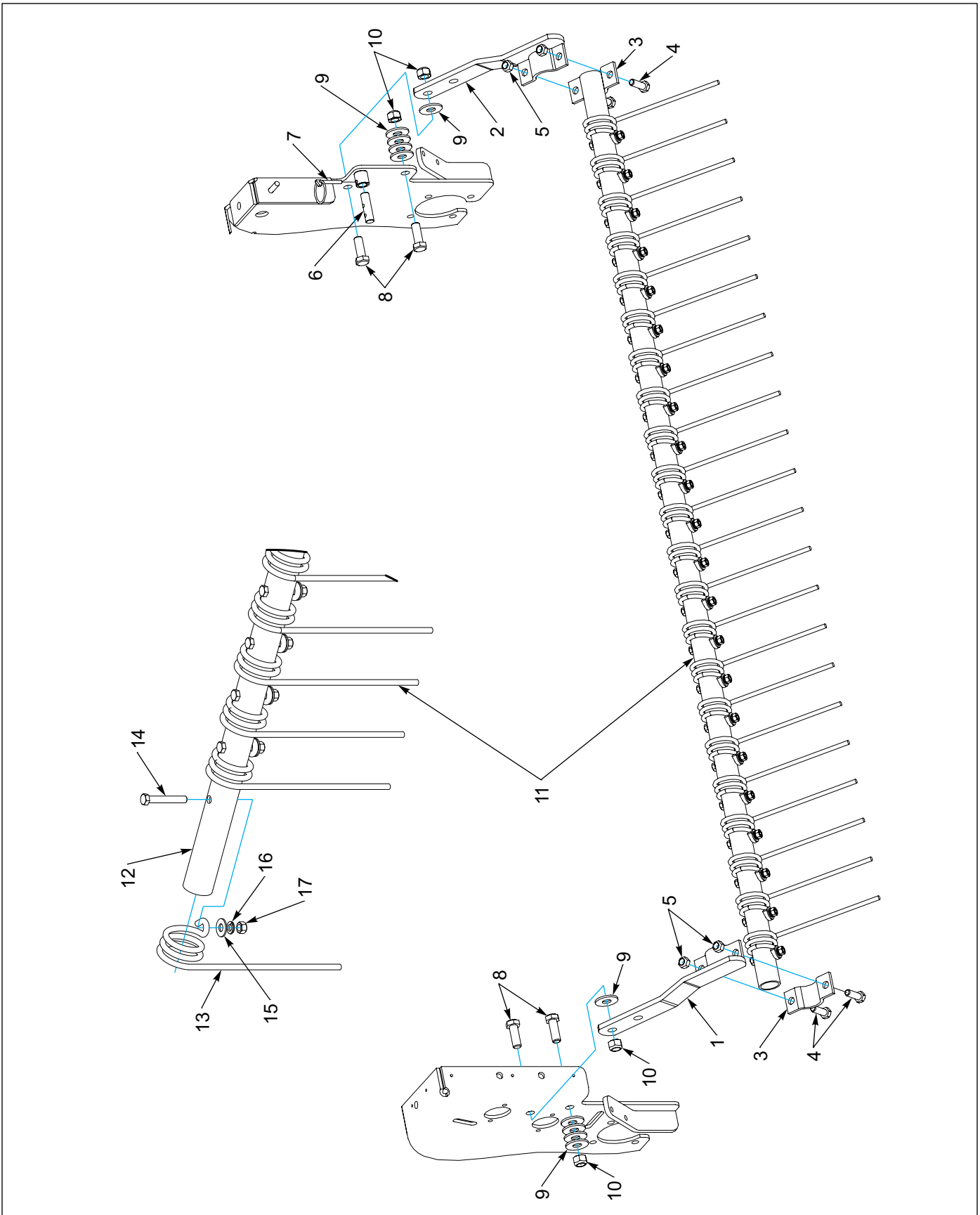


Figure 2-17: Coil Tine Assembly (Optional)

Coil Tine Assembly (Optional)

ITEM	PART NUMBER	DESCRIPTION	QTY
1	2P038	BRACKET, COIL TINE LH	1
2	2P066	BRACKET, COIL TINE RH	1
3	2K656	CLAMP PAINTED	2
4	1-654-010055-03	SCREW, HEX CAP, 1/2-13 X 1-1/2, GR5, ZP	4
5	1-512-010005-09	NUT, HEX SLFLKG 1/2-13, GRB, ZP	4
6	9J457	PIN	1
7	5D110	KLIK-PIN, 1/4 X 1-3/4	1
8	1-654-010059-04	SCREW, HEX CAP 5/8-11 X 1-3/4, GR5, ZP	4
9	1-861-010032-19	WASHER, FLAT 5/8 STD, ZP	10
10	1-512-010005-13	NUT, HEX SLFLKG 5/8-11, GRB, ZP	4
11	2P068	PIPE AND TINE ASM (INCLUDES ITEMS 12 - 17)	1
12	7K136	PIPE, 6'	1
13	5J603	COIL TINE	22
14	1-654-010051-11	SCREW, HX CP, 3/8-16 X 2-1/2, GR2, ZP	22
15	1-861-010032-11	WASHER, FLAT 3/8 STD, ZP	22
16	1-861-010034-11	WASHER, LKG HLCL 3/8, ZP	22
17	1-512-010007-07	NUT, HEX 3/8-16, ZP	22

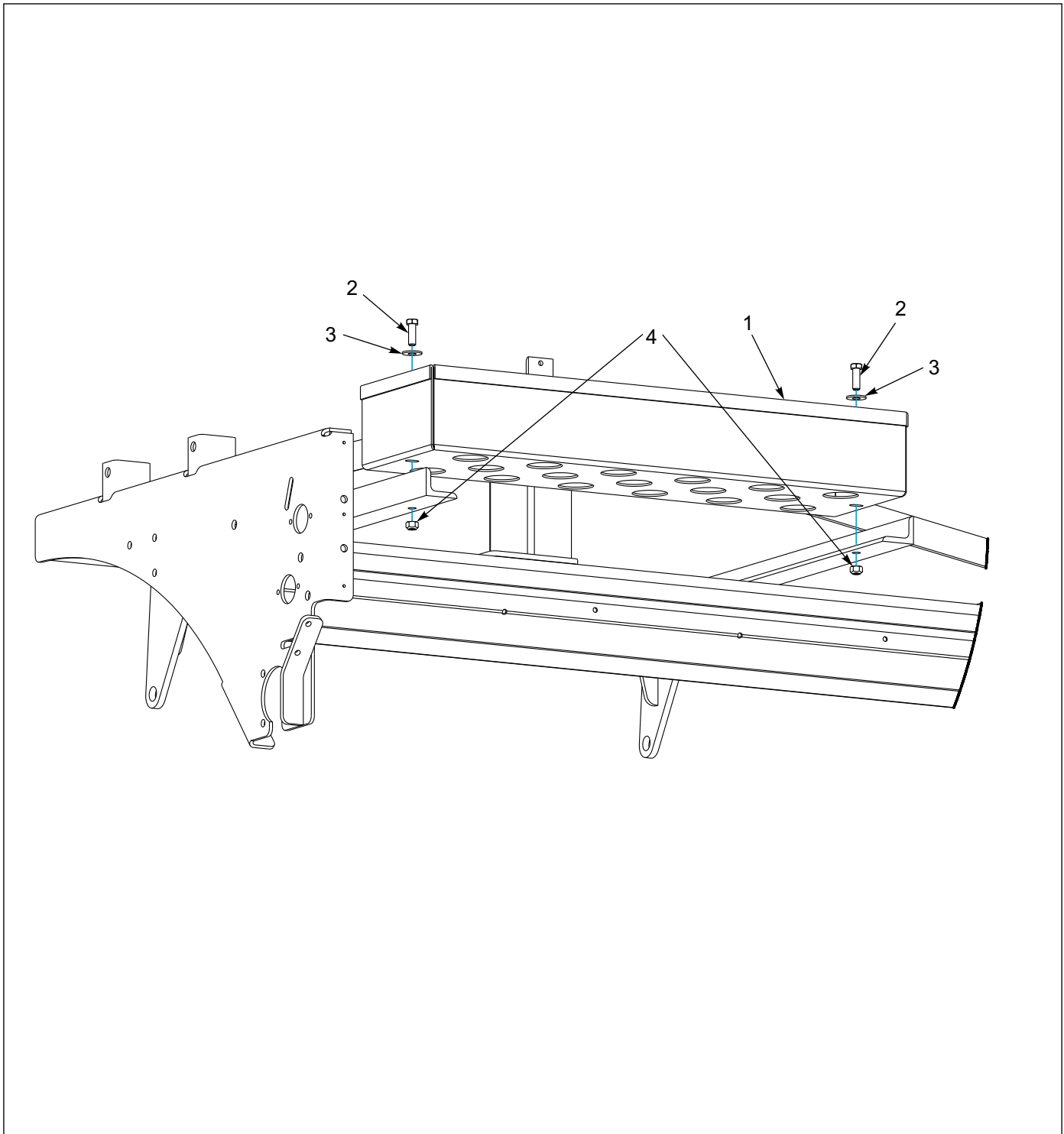


Figure 2-18: Rock Box (Optional)

Rock Box (Optional)

ITEM	PART NUMBER	DESCRIPTION	QTY
1	2P064	ROCK BOX	1
2	1-654-010055-03	SCREW, HEX CAP 1/2-13UNC X 1-1/2, GR5, ZP	2
3	1-861-010032-15	WASHER, FLAT 1/2 W ZP/CD	2
4	1-512-010005-09	NUT, HEX SLFLKG 1/2-13, GRB, ZP	2

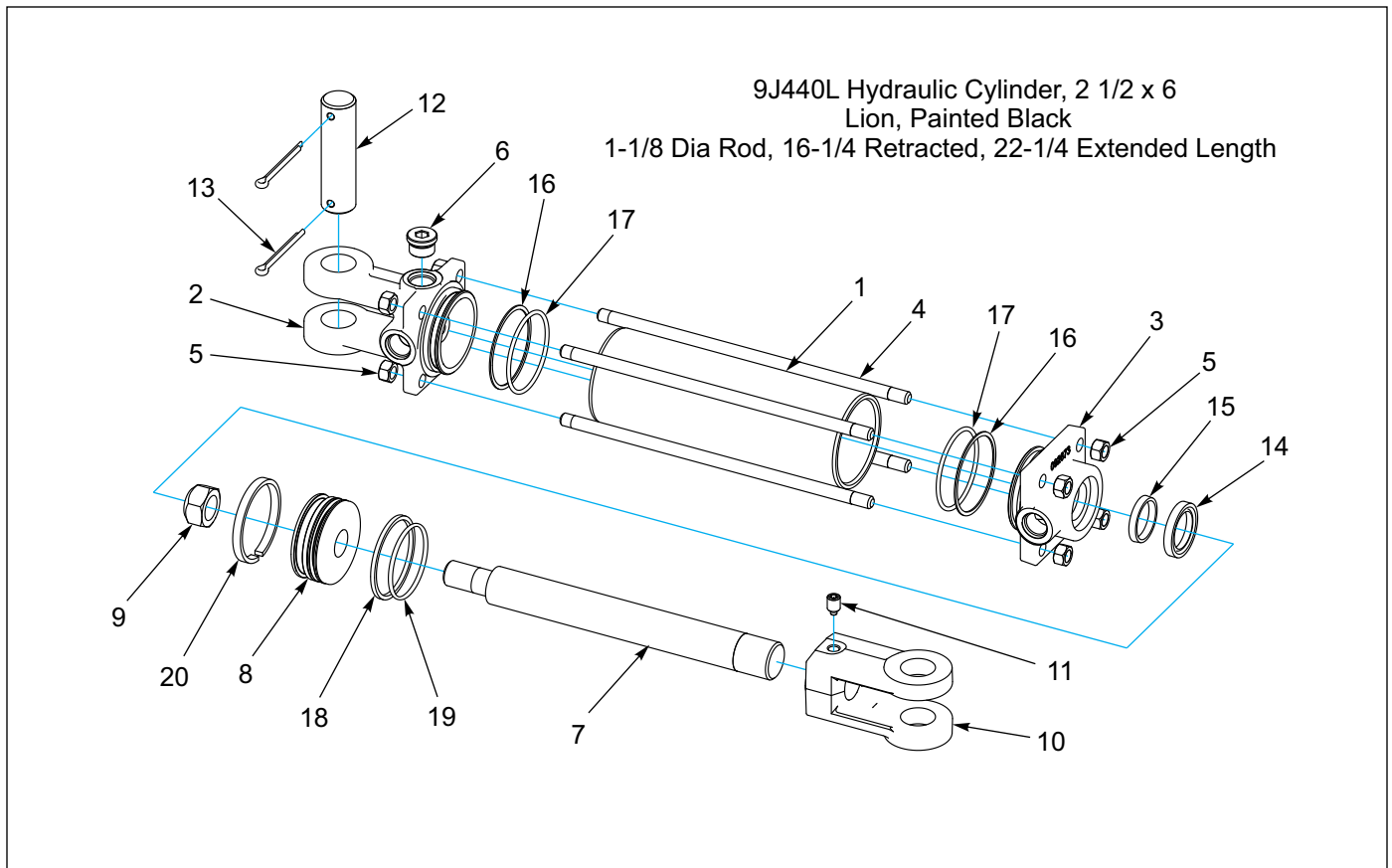


Figure 2-19: Hydraulic Cylinder 9J440

9J440 Hydraulic Cylinder, 2-1/2 x 6 - Lion

ITEM	PART NUMBER	DESCRIPTION	QTY
	9J440	HYD CYLINDER - 2-1/2 X 16	
1	----	TUBE	1
2	----	CLEVIS CAP	1
3	----	ROD CAP	1
4	----	TIE ROD	4
5	1-512-010007-07	NUT, HEX 3/8-16, ZP	8
6	----	PLUG, SOCKET HEAD 3/4-16	1
7	----	ROD	1
8	----	PISTON	1
9	1P805	NUT, LOCK 3/4-16, GRB, ZP	1
10	2P735	ROD CLEVIS (INCLUDES ITEM 11)	1
11	1P443	SET SCREW, 3/8-16 X 1/2 NYLON TIP	1
12	5J650	PIN, 1.0 X 3.625 H2	1
13	110-4224	COTTER PIN, 3/16 X 2IN LG	2
14	----	SEAL, WIPER ROD 1.125 METAL E	1
15	----	SEAL, HALLITE 605 ROD 1.125D	1
16	----	SEAL, BU#228 19PI-228	2
17	----	O-RING, 228 (2.25 X 2.5) DURO	2
18	----	SEAL, PTFE PISTON RING 2-1/2D	1
19	----	O-RING, 137 (2.063 X 2.25) DUR9	1
20	----	WEAR RING, 2.50-2.25-.25-GFN	1
21	1P742	SEAL KIT (INCLUDES ITEMS 14-20)	

Numerical Index

Numerics

101510	2-23, 2-25, 2-27	163311	2-13
102931	2-11	163313	2-13
104032	2-29	163315	2-9
104302	2-9	163316	2-9
104665	2-15	163319	2-9
104877	2-17, 2-19, 2-23, 2-25, 2-27	163320	2-9
107-0975	2-17	163324	2-9
108628	2-29	1-654-010047-04	2-9
110-4224	2-33	1-654-010049-03	2-9, 2-19
141433	2-3	1-654-010049-05	2-9, 2-23, 2-25, 2-27
141776	2-11	1-654-010049-06	2-19, 2-29
1-512-010005-05	2-5, 2-7, 2-10	1-654-010051-05	2-17, 2-19
1-512-010005-09	2-5, 2-7, 2-11, 2-12, 2-13, 2-15, 2-31, 2-32	1-654-010051-06	2-10
1-512-010005-13	2-11, 2-31	1-654-010051-11	2-5, 2-7, 2-31
1-512-010005-15	2-3, 2-11	1-654-010055-01	2-19
1-512-010005-19	2-3	1-654-010055-02	2-5, 2-7, 2-17, 2-19, 2-23, 2-25, 2-27
1-512-010007-03	2-17, 2-19	1-654-010055-03	2-9, 2-13, 2-15, 2-31, 2-32
1-512-010007-05	2-17	1-654-010055-05	2-12
1-512-010007-06	2-9, 2-19, 2-23, 2-25, 2-27	1-654-010055-11	2-23, 2-25, 2-27
1-512-010007-07	2-17, 2-19, 2-31, 2-33	1-654-010059-04	2-31
1-512-010007-09	2-15, 2-17, 2-23, 2-25, 2-27	1-654-010059-06	2-23, 2-27
1-512-010007-11	2-17, 2-23, 2-27	1-654-010059-11	2-11
1-512-01007-09	2-19	1-654-010061-06	2-3
151528	2-3	1-654-010070-03	2-11
163308	2-13	1-654-010077-2	2-19
163309	2-13	1-861-010032-06	2-9, 2-17, 2-19, 2-23, 2-25, 2-27
163310	2-13	1-861-010032-09	2-9, 2-29
		1-861-010032-11	2-10, 2-19, 2-31
		1-861-010032-14	2-23, 2-25, 2-27

NUMERICAL INDEX

1-861-010032-15	2-19, 2-32	1P938	2-29
1-861-010032-19	2-31	207051	2-9
1-861-010032-20	2-3, 2-5, 2-7	231008	2-9
1-861-010032-22	2-19	2C662	2-19
1-861-010032-24	2-3	2C808	2-19
1-861-010032-25	2-11	2C809	2-19
1-861-010034-07	2-17, 2-19	2D894	2-1, 2-23, 2-25, 2-27
1-861-010034-09	2-9, 2-17, 2-23, 2-25, 2-27	2J430	2-17
1-861-010034-10	2-9, 2-19, 2-23, 2-25, 2-27	2J431	2-17
1-861-010034-11	2-17, 2-19, 2-31	2K123	2-17, 2-19
1-861-010034-13	2-15, 2-17, 2-19, 2-23, 2-25, 2-27	2K316	2-15
1-861-010034-15	2-23, 2-27	2K451	2-17
1C192	2-17, 2-19	2K452	2-19
1C193	2-17, 2-19	2K453	2-17, 2-19
1C199	2-17, 2-19	2K503	2-23, 2-25, 2-27
1C205	2-1, 2-3, 2-19	2K656	2-13, 2-15, 2-31
1C212	2-17, 2-19	2K957	2-23, 2-25, 2-27
1C213	2-17, 2-19	2P001	2-10
1C217	2-19	2P002	2-9, 2-15
1C242	2-17	2P004	2-15
1C243	2-17	2P007	2-11
1C245	2-17	2P008	2-15
1C272	2-17	2P009	2-15
1C339	2-19	2P012	2-9, 2-23, 2-25, 2-27
1C606	2-19	2P014	2-12
1C659	2-23, 2-25, 2-27	2P015	2-12
1C869	2-1	2P016	2-11
1C871	2-1	2P018	2-11
1D598	2-23, 2-25, 2-27	2P019	2-23, 2-25, 2-27
1K618	2-7	2P020	2-11
1P443	2-33	2P021	2-23, 2-25, 2-27
1P742	2-33	2P023	2-23, 2-25, 2-27
1P805	2-33	2P025	2-11
1P870	2-12	2P026	2-11
1P871	2-12	2P027	2-11
1P872	2-11	2P030	2-11
1P873	2-11	2P031	2-17
1P937	2-29	2P032	2-17

2P038	2-31	2P982	2-5, 2-7
2P044	2-11	2P986	2-5, 2-7
2P046	2-9, 2-17, 2-20	2P987	2-3
2P055	2-12	2P989	2-3
2P061	2-1	2P990	2-5
2P063	2-10	3C173	2-5, 2-7
2P064	2-32	3C335	2-5
2P065	2-1	3C350	2-5, 2-7
2P066	2-31	3J880	2-3
2P067	2-23, 2-25, 2-27	3P089	2-9
2P068	2-31	3P270	2-13, 2-15
2P075	2-12	4C589	2-17
2P076	2-23, 2-25, 2-27	4C750	2-17
2P082	2-23, 2-25, 2-27	4D983	2-1
2P083	2-23, 2-25, 2-27	4K036	2-17, 2-20
2P084	2-23	4K037	2-17
2P085	2-19	4K602	2-29
2P086	2-9	4K607	2-29
2P088	2-23, 2-25, 2-27	4K608	2-29
2P089	2-23, 2-27	4K619	2-29
2P092	2-27	4K912	2-29
2P104	2-17	528933	2-20
2P151	2-9	528938	2-20
2P173	2-19	5C077	2-1
2P177	2-19	5C100	2-5, 2-7
2P178	2-19	5C284	2-13, 2-15
2P252	2-9	5D110	2-1, 2-23, 2-25, 2-27, 2-31
2P461	2-3	5D129	2-3
2P686	2-29	5D157	2-1
2P735	2-33	5J603	2-31
2P786	2-25	5J616	2-12
2P958	2-5, 2-7	5J650	2-5, 2-33
2P959	2-5, 2-7	5K989	2-17
2P960	2-5, 2-7	6C400	2-9
2P961	2-5, 2-7	6C468	2-3, 2-5, 2-11
2P962	2-5, 2-7	6J448	2-1, 2-5, 2-12
2P965	2-5, 2-7	6K008	2-17
2P973	2-3	6K032	2-9

NUMERICAL INDEX

6K391	2-17	9C227	2-5, 2-7
6K442	2-17	9C228	2-5, 2-7
7C086	2-19, 2-25, 2-27	9D793	2-19
7C285	2-23, 2-25, 2-27	9D816	2-17
7D728	2-12	9D854	2-23, 2-25, 2-27
7D937	2-17, 2-19	9J338	2-15
7D938	2-17, 2-19	9J422	2-19
7K016	2-23, 2-25, 2-27	9J440	2-5, 2-29, 2-33
7K017	2-19, 2-25, 2-27	9J457	2-31
7K114	2-23, 2-27	9J848	2-1, 2-3
7K136	2-31		
7K225	2-1		
7K226	2-1		
7K227	2-1		
7K228	2-1		
7K229	2-1		
7K230	2-1		
7K237	2-17		
7K407	2-19		
7K408	2-19, 2-25, 2-27		
7K409	2-19, 2-25, 2-27		
7K413	2-17		
7K419	2-17		
7K423	2-23, 2-27		
7K429	2-23, 2-27		
7K439	2-23, 2-27		
7K442	2-17		
7K545	2-5, 2-7		
7K677	2-19, 2-25, 2-27		
8C381	2-23, 2-25, 2-27		
8C892	2-23, 2-27		
8D099	2-3		
8J310	2-17		
8J564	2-19		
8K349	2-9		
8K350	2-9		
8K597	2-17		
9C226	2-5, 2-7		

Chapter 4

Glossary

For clarity this glossary of industry standard abbreviations and their definitions are provided.

A

ASM Assembly

B

BATT Battery
BHSC Button Head Socket Cap
BLK Black
BRG Bearing

C

CB Carriage Bolt
CONN Connector
CRG Carriage
CTSK Countersunk
CYL Cylinder

D

DBL Double
DIA Diameter

E

ENCLSD Enclosed

F

FHCS Flanged Head Cap Screw
FHHCS Flanged Hex Head Cap Screw
FL OR FLG Flange

FLT Flat
FPS Food Plot Seeder

G

GA Gauge
Gr Grade

H

HHCS Hex Head Cap Screw
HD Head
HLCL Helical
HCSKT Hex Socket
HYD Hydraulic

I

ID Inside Diameter

L

LH Lefthand
LKG OR LOCK Locking
LWR Lower

M

MANF Manifold
MNT Mount

N

NRW Narrow
---- Not Serviced Separately

GLOSSARY

O

OD Outside Diameter
ORFS OR ORS O-Ring Seal
ORP OR ORB O-Ring Boss

R

RH Righthand
RND Round

S

SER Series
SHCS Socket Head Cap Screw
SHLD Shield
SKT Socket
SLFLKG Selflocking
SOC Socket
SPR Spring
SQ Square
SRTD Serrated
SSCR Setscrew
SST Stainless Steel
STD Standard

U

UPR Upper

W

WHL Wheel
WLD OR WLDMT Weldment

Z

ZP Zinc Plated

Document Control Revision Log:

Date	Revision	Improvement(s) Description and Comments
09/07/2008	908rev0708	Initial Release
09/12/2011	908rev0911	Improved Pictures, translated to Landoll Format
08/12/2020	0820	ECN46317 - Add shield to prevent chain derailing



Intertek

Equipment from Landoll Company, LLC is built to exacting standards ensured by ISO 9001 registration at all Landoll manufacturing facilities.

Food Plot Seeder
Models FPS-6, FPSA-6, FPSB-6,
FPST-6, FPSAT-6 and FPSBT-6
Parts Manual

Re-Order Part Number 2P103-rev0820

LANDOLL COMPANY, LLC

1900 North Street

Marysville, Kansas 66508

(785) 562-5381

800-428-5655 ~ WWW.LANDOLL.COM



Copyright 2020. Landoll Company, LLC

"All rights reserved, including the right to reproduce this material or portions thereof in any form."