

**OPERATOR'S MANUAL
and
REPAIR PARTS CATALOG**



**TWO - BAR
PICK-UP *Chisel Plow***

**Mounted Models: CPPR2-5 CPPS2-5
 CPPR2-7 CPPS2-7**

IMPORTANT!
Repairs cannot be purchased
retail direct from factory.
Order through your Brillion dealer.

CONTENTS

| | |
|--|----|
| Introduction | 2 |
| Safety Suggestions | 2 |
| Set-Up Instructions | 3 |
| Main Frame | 3 |
| Shank Assembly | 3 |
| Gauge Wheel Assembly | 4 |
| Specifications | 4 |
| Weights | 5 |
| Optional Equipment | 5 |
| Maintenance | 5 |
| Parts Ordering | 5 |
| Repair Parts Listings | 9 |
| Chisel Plow Shanks & Points | 9 |
| Frame & Optional Gauge Wheel Kit | 11 |
| Spring Shank Assembly | 12 |

INTRODUCTION

Your Brillion Chisel Plow is built with the best materials and workmanship available. It has been designed to give years of trouble-free operation, and proper care and operation will insure the service and long life built into it.

Study this manual carefully before attempting to assemble or operate the machine.



THIS SAFETY ALERT SYMBOL IS USED TO CALL YOUR ATTENTION TO INSTRUCTIONS CONCERNING YOUR PERSONAL SAFETY. BE SURE TO OBSERVE AND FOLLOW THESE INSTRUCTIONS.

SAFETY SUGGESTIONS

Investigation of farm accidents shows that nearly one-third of all farm accidents are caused by careless use of farm machinery. You can do your part in making your farm and community safer by following the safety suggestions. Insist that all people working with you or for you abide by these suggestions.

1. A chisel plow is a fairly simple machine, but it must be operated in a prudent manner.
2. Do not stand between the tractor and implement when attaching or detaching the implement unless both tractor and implement are not moving.
3. Always take care in raising and lowering the chisel plow, and be certain no one is in the way.
4. When not in use, lower the machine to ground.
5. Do not make adjustments on machine while it is in motion or in the raised position.
6. Never work under the chisel plow unless it is securely blocked up and cannot be knocked off the blocks.
7. Block the machine so that it will not roll when disconnected from the tractor.
8. Never allow passengers to ride on the tractor or machine.
9. Do not transport at speeds over 20 miles per hour.
10. Never turn corners at a high rate of speed.
11. Display the slow moving vehicle emblem when traveling on roads.
12. When traveling on the road at night, accessory warning lights should be mounted on the implement. Local regulations should be checked first, and if there are none, the chisel plow owner should take the initiative to make his machine noticeable at night.

13. Tractor front end stability is necessary for safe and efficient operation and control. Therefore it is important that the proper amount of weight be installed on the front of the tractor as recommended in your tractors operator manual.

NOTE: Ballast recommendations provide for adequate transport stability at recommended speeds. Additional front ballast may be required for satisfactory field operation due to sudden or extreme forces on the tractor hitch, such as may occur when removing the chisel plow from the ground and turning at row ends, or during field transport over very rough terrain.

SETTING UP INSTRUCTIONS

"Right" and "Left", "Front" and "Rear" refer to operators "Right" and "Left", "Front" and "Rear" when he faces in the same direction as the machine will travel.

ASSEMBLY OF THE MAIN FRAME

Assembly of the main frame consists of attaching the 9D-978 mast and the 9D-979 brace tube. Bolt the mast to the mating hitch tube holes on the frame with the 5/8" x 4-1/2" long capscrews. Do not draw capscrews up tight at this time. Fasten the ends of the brace tube between the upper holes in the mast and between the two angles on the rear of the frame. Place the two 8C-892 machinery bushings between the brace tube and mast uprights as shown on Figure 5. Secure both ends of the brace tube to the mast and frame with the 5/8" x 4" long capscrews, lockwashers and nuts. Now tighten the mast bolts.

SHANK ASSEMBLY

Figures 1, 3 & 4 show how the shank assemblies are mounted to the tooth bar.

Begin by placing the frame on blocks at least thirty inches high for assembly of the shanks.

The rigid mounted shanks are shipped assembled to the shank clamps. To mount these on the chisel plow, remove the 3/4" bolt and nut from the front of the assembly. Slide the assembly onto the tooth bar and replace the bolt and nut. Torque the 5/8" nuts to 110 ft.-lbs.

The spring clamp and the shank are not assembled for shipping. To mount the shank to the clamp, first remove the nut from the 3/4 x 3-1/2" long bolt and remove the bolt from the shank holder and from the U-bolt clip. Loosen the two nuts on the small U-bolt so that the shank can slide between the plate and the shank holder. Remove the two locknuts from the long U-bolt and remove the plate and the spring caps. Slide the shank between the legs of the small U-bolt and between the plate and the shank holder and also between the legs of the long U-bolt. Insert the 3/4" bolt through the shank holder, the shank and the U-bolt clip. Assemble the spring caps, the plate and the two locknuts on the long U-bolt making sure that the U-bolt is positioned correctly in the U-bolt clip. Tighten all nuts. Mount the assembly on the toothbar. Torque the 3/4" nuts to 200 ft.-lbs.

For field operation, the spring bolts should be tightened so that one inch of thread is exposed as shown in figure 3. For chisel plowing tougher ground you may want to clamp the spring tighter, but when this is done, the shank and tooth will not pass over as great an obstruction.

When replacing or reversing points, change all points at the same time so that they will have the same operating depth. If some shanks have worn points and some have new points, or points of a different design, the chisel plow will not operate efficiently.

GAUGE WHEEL ASSEMBLY

Figure 2 shows how the gauge wheels are assembled to the frame if your unit is so equipped. Set the frame on a level surface with the shanks mounted.

Clamp the wheel hub and bar to the side bar of the frame as shown in figure 2. Position the hub and bar assembly about 1/3 of the way back from the front of the frame. To adjust the gauge wheels for depth, loosen the two U-bolts but do not remove the nuts.

Set wheels to desired height so that both wheels are set at the same depth. The distance from the bottom of the tire to the tip of the shank will be the approximate working depth of the shank. Tighten the U-bolts securely and check periodically for looseness.

SPECIFICATIONS

| <u>Model No.</u> | <u>Number of Shanks Used</u> | <u>Shank Type</u> | <u>Tractor 3 Point Lift</u> |
|------------------|------------------------------|-------------------|------------------------------------|
| CPPR2-5 | 5 | Rigid | Category II or Quick Coupler |
| CPPS2-5 | 5 | Spring | |
| CPPR2-7 | 7 | Rigid | |
| CPPS2-7 | 7 | Spring | |

Optional Number of Shanks
 Used and Shank Spacings - - - - - See Figure 1 on page 4

Shanks - - - - - 1" x 2" x 26" Clearance
 Rigid or Spring Type

Working Depth - - - - - 0 to 12 inches

Gauge Wheel Rims - - - - - 15" - 5 bolt

WEIGHTS

| | |
|---|--|
| (Weights Less Gauge Wheels and Shank Points) | Basic unit Less Shanks and Gauge Wheel Kit 260# |
| CPPR2-5 455# | 9D-986 Gauge Wheel Kit Less Tires 122# |
| CPPS2-5 590# | |
| CPPR2-7 533# | RC-26 Rigid Shank Assembly 39# |
| CPPS2-7 722# | SC-26 Spring Type Shank Assembly 66# |

OPTIONAL EQUIPMENT

- 9D986 Gauge Wheel Kit (less tires)
- 9D991 Box of 5 - 5/8" x 2 x 15" Chisel Points
- 9D993 Box of 5 - 3/8" x 3 x 19 1/2" Twisted Shovels
- 6D759 Box of 7 - 5/8" x 2 x 15" Chisel Points
- 6D763 Box of 7 - 3/8" x 2 x 19 1/2" Twisted Shovels

MAINTENANCE

After the first five or six hours of operation, go over the machine and tighten all nuts which might be loose. Normal periodic checks should be made thereafter.

For the shanks with a spring cushion clamp, grease the pivot pin every 10 hours under normal operating conditions.

Gauge wheel bearings should be packed once a season.

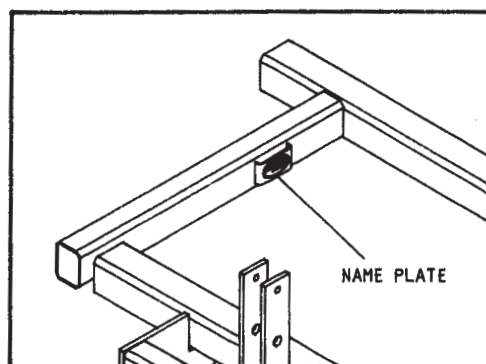
PARTS ORDERING

When ordering parts for this machine, be sure to include the complete model number and serial number. These numbers are stamped on a name plate located on the inner side of the right front-to-back tube. Please read and record this number upon taking delivery of the machine.

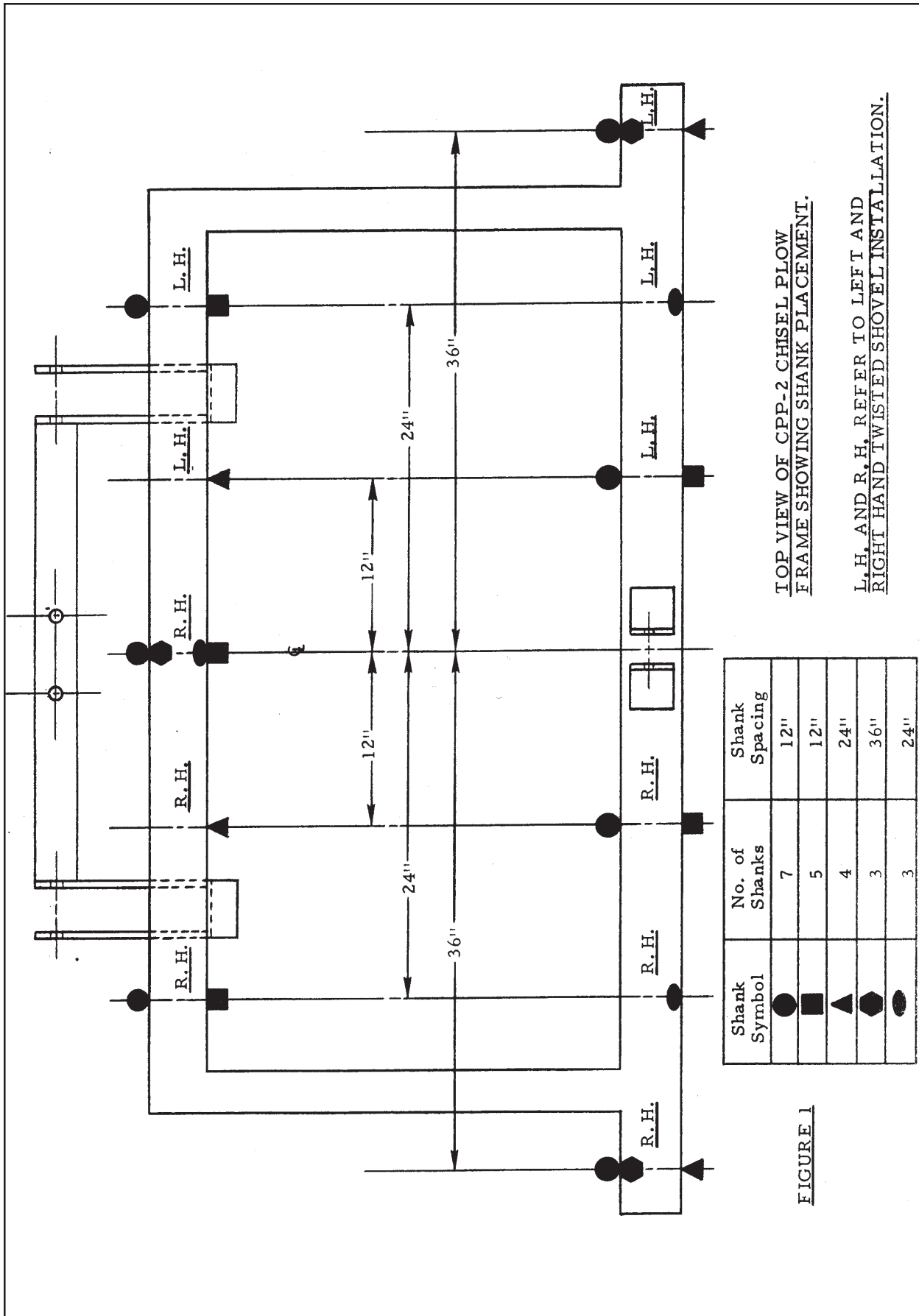
Chisel Plow Model

Serial Number

Date Purchased



Be sure to read the warranty card which is shipped with this machine. Return the proper portion of the warranty card so that your machine identification number will be recorded.



5/8" Dia. U-Bolts,
Nuts, & Lockwashers

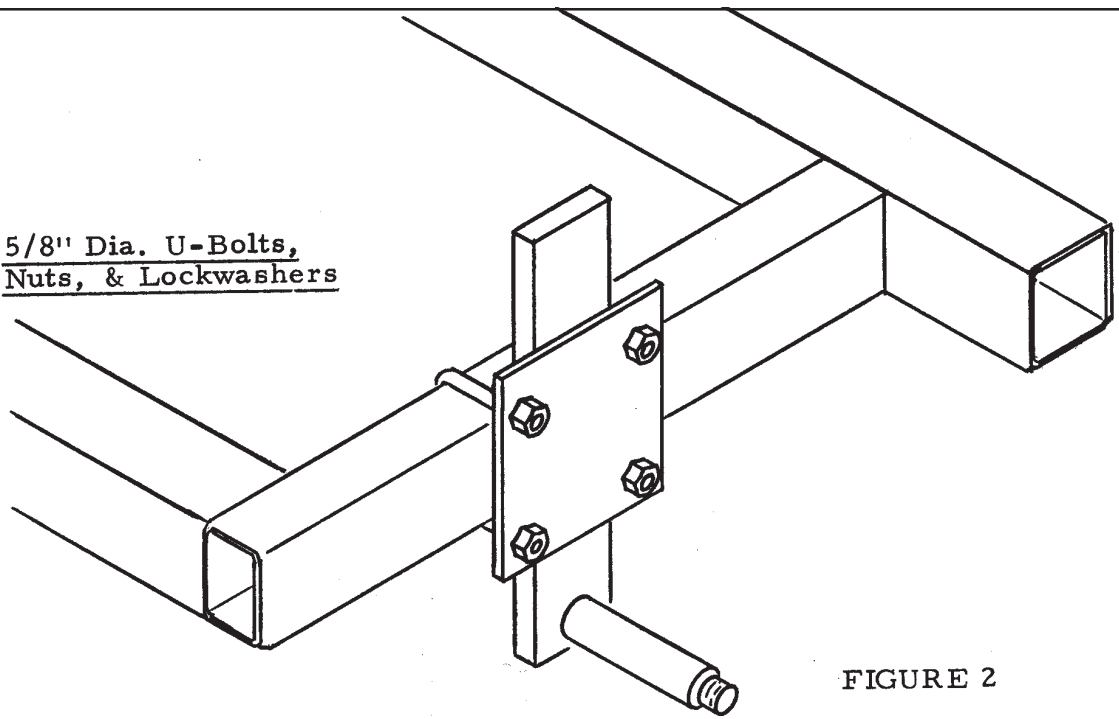
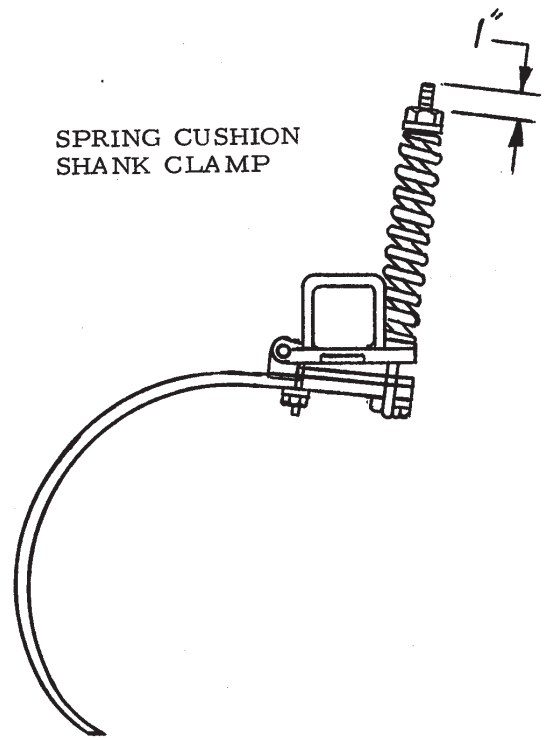


FIGURE 2

SPRING CUSHION
SHANK CLAMP



RIGID SHANK
CLAMP

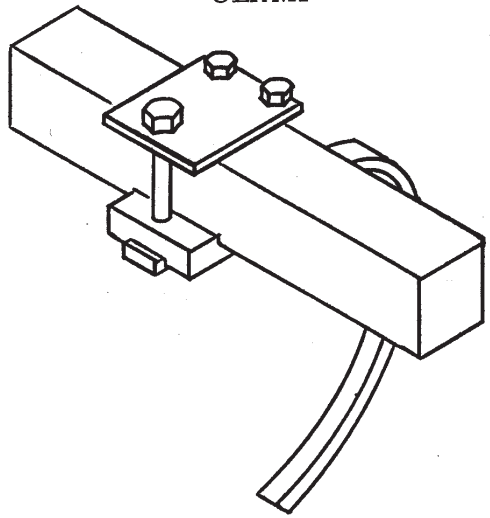


FIGURE 3

SEE LAST PAGE FOR SPRING
CLAMP ASSEMBLIES SHIPPED
AFTER AUGUST 1982

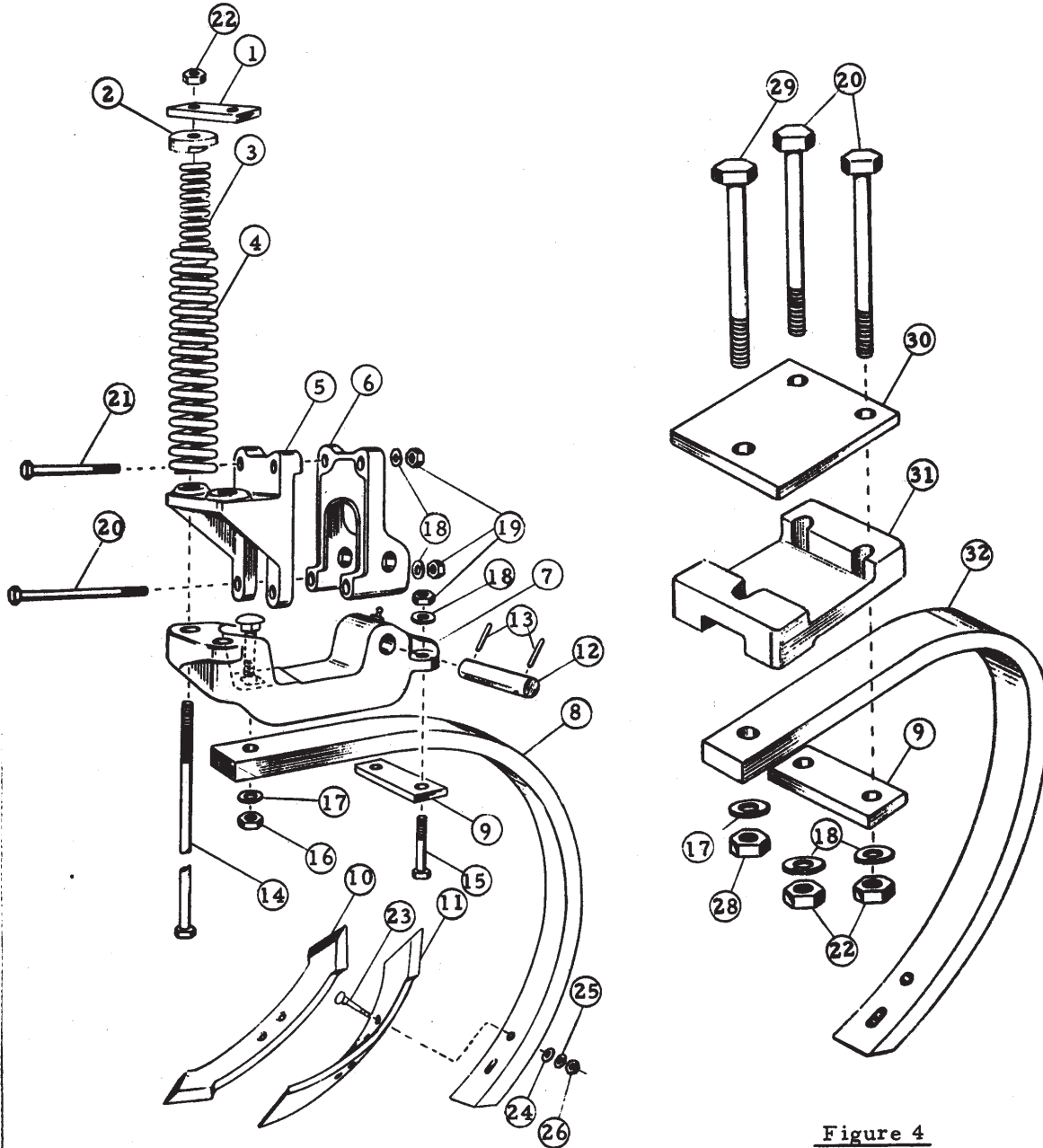


Figure 4

TWISTED SHOVELS

If twisted shovels are to be used, it is suggested that they be arranged on the shanks as shown in Figure 1. L.H. means that the soil is thrown left and R.H. means that the soil is thrown to the right. If another arrangement is desired, be sure that the shovels have balanced positions from right side to left; i.e., a L.H. shovel is the same distance from the center of the machine as a R.H. shovel is on the opposite side. Place the plow bolts in the two bottom holes of the shovel as shown at the left.

| CHISEL PLOW SHANKS & POINTS | | | | |
|--|----------|--|------------|--------|
| Index No. | Part No. | Description | No. Req'd. | Weight |
| 1 | 6D409 | Strap | 1 | .4 |
| 2 | 6D410 | Spring Cap | 2 | 1.0 |
| 3 | 6D362 | Compression Spring, 17/64 Wire Diameter | 2 | 1.3 |
| 4 | 6D361 | Compression Spring, 7/16 Wire Diameter | 2 | 4.0 |
| 5 | 6D406 | Shank Support, Front | 1 | 6.5 |
| 6 | 6D407 | Shank Support, Rear | 1 | 4.0 |
| 7 | 8D361 | Clamp Pivot [6D408 - Clamp and Lube Fitting] | 1 | 9.0 |
| 8 | 6D283 | Shank - 26S, 1" x 26" Clear., Spring Cushion | 1 | 25.6 |
| 9 | 6D280 | Strap | 1 | 1.2 |
| 10 | 6D213 | Regular Chisel Point, 5/8" Thick x 2" Wide | 1 | 4.8 |
| 11 | 6D215 | Twisted Shovel, R.H., 3/8" Thick x 3" Wide | 1 | 6.2 |
| | 6D216 | Twisted Shovel, L.H., 3/8" Thick x 3" Wide | 1 | 6.2 |
| 12 | 2J097 | Pin | 1 | 1.3 |
| 13 | 2J600 | Roll Pin, 5/16"x 1 1/2" Long | 2 | - |
| 14 | 6D373 | Machine Bolt, 5/8" x 14" Long, Gr. 5 | 2 | 1.3 |
| 15 | 8C065 | Capscrew, 5/8" x 3" Long, Gr. 5 | 2 | .3 |
| 16 | 1C210 | Nut, 3/4" Regular Hex | 1 | - |
| 17 | 1C211 | Lockwasher, 3/4" Std. | 1 | - |
| 18 | 1B166 | Lockwasher, 5/8" Std. | 6* | - |
| 19 | 1C392 | Nut, 5/8" Regular Hex | 6* | - |
| 20 | 6D303 | Machine Bolt, 5/8" x 7 1/2" Long, Gr. 5 | 2 | .7 |
| 21 | 6D355 | Capscrew, 5/8" x 6" Long, Gr. 5 | 2 | .6 |
| 22 | 5C461 | Locknut, 5/8" Regular Hex | 2 | - |
| 23 | 4K390 | Plow Bolt, 7/16" x 3" Long, Gr. 5 | 2 | - |
| 24 | 7C460 | Flat Washer, 7/16 Std. | 2 | - |
| 25 | 1C314 | Lockwasher, 7/16" Std. | 2 | - |
| 26 | 1C179 | Nut, 7/16" Reg. Hex | 2 | - |
| - | - | - | - | - |
| 28 | 6C729 | Locknut, 3/4" Reg. Hex | 1 | - |
| 29 | 6D302 | Machine Bolt, 3/4" x 7" Long, Gr. 5 | 1 | .8 |
| 30 | 6D298 | Plate | 1 | 6.0 |
| 31 | 6D234 | Shank Support | 1 | 5.5 |
| 32 | 6D314 | Shank - 26R, 1" x 26" Clear., Rigid (Replaced by 6D283) | 1 | 32.0 |
| * Only 2 used on Rigid Mount Shank Support | | | | |

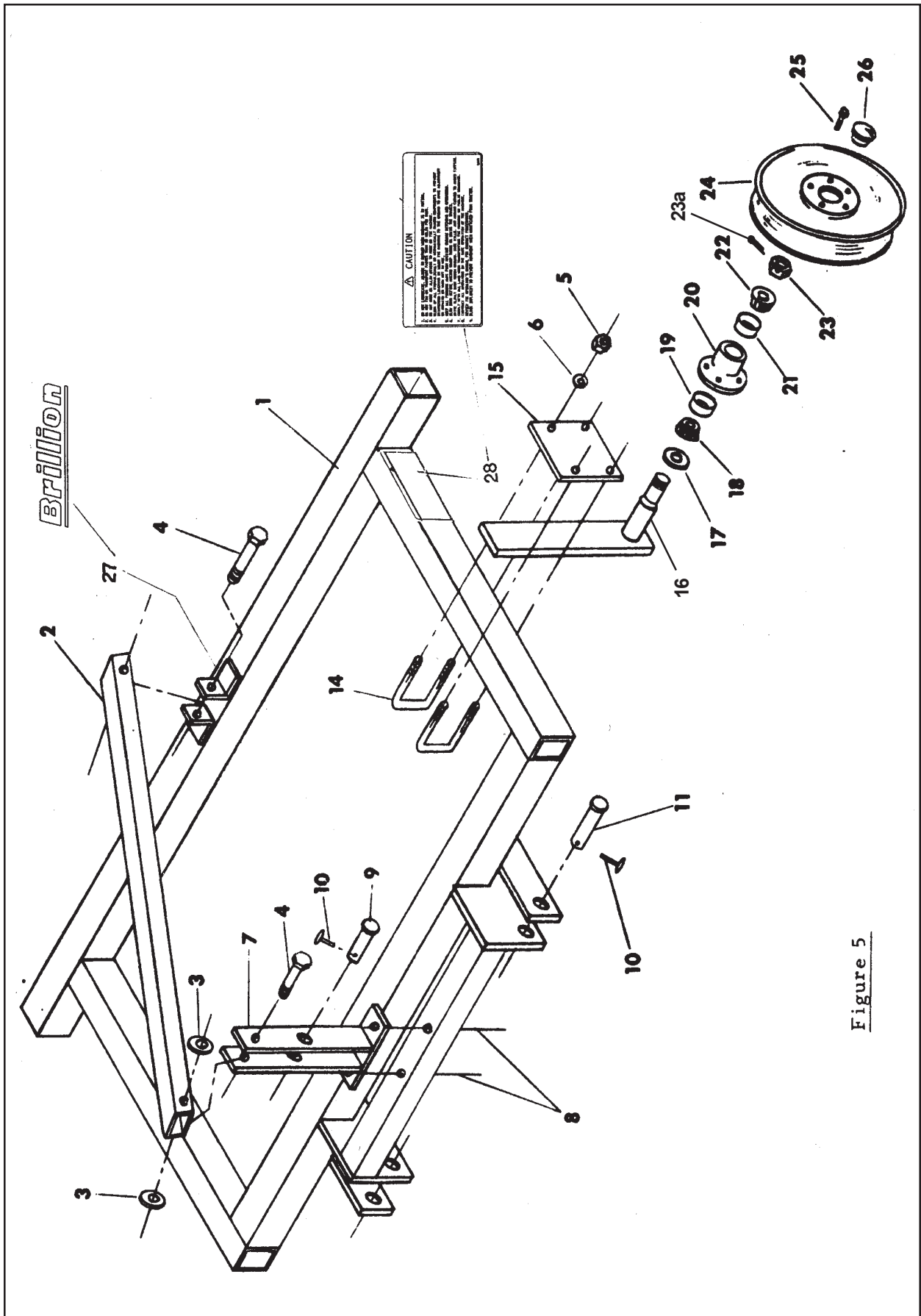
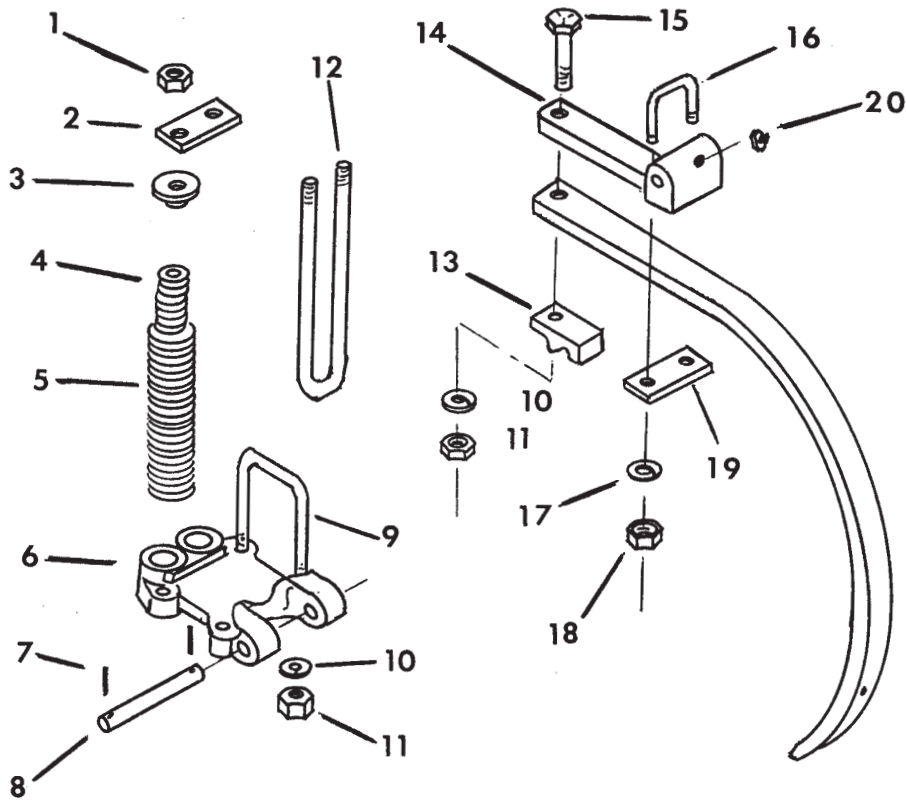


Figure 5

| FRAME & OPTIONAL 9D986 GAUGE WHEEL KIT | | | | |
|--|----------|--|------------|--------|
| Index No. | Part No. | Description | No. Req'd. | Weight |
| 1 | 9D976 | Frame Assembly | 1 | 215.0 |
| 2 | 9D979 | Brace Tube | 1 | 20.0 |
| 3 | 8C892 | Machinery Bushing | 2 | .10 |
| 4 | 8C882 | Capscrew, 5/8-11 NC x 4" Long, Gr. 5 | 2 | .40 |
| 5 | 1C392 | Nut, 5/8-11 NC Hex Head | 12 | .08 |
| 6 | 1B166 | Lock Washer, 5/8" med. | 12 | .08 |
| 7 | 9D978 | Mast | 1 | 15.0 |
| 8 | 8D084 | Capscrew, 5/8-11 NC x 4 1/2" Long, Gr. 5 | 2 | .40 |
| 9 | 6D529 | Clevis Pin | 1 | 1.1 |
| 10 | 5D110 | Klik Pin | 3 | .10 |
| 11 | 5D156 | Clevis Pin | 2 | 1.6 |
| 14 | 9D989 | U-Bolt | 4 | 1.4 |
| 15 | 9D988 | Plate | 2 | 7.5 |
| 16 | 1J377 | Spindle | 2 | |
| 17 | 1D273 | Seal | 2 | .10 |
| 18 | 5C480 | Bearing Cone #LM48548 | 2 | .30 |
| 19 | 5C479 | Bearing Cup #LM48510 | 2 | .20 |
| 20 | 1J390 | Wheel Hub | 2 | 8.60 |
| 21 | 5C912 | Bearing Cup #LM11910, 3/4 Brg. | 2 | .20 |
| 22 | 5C911 | Bearing Cone #LM11949, 3/4 Brg. | 3 | .30 |
| 23 | 3C173 | Slotted Nut | 2 | .10 |
| 23a | 3C350 | Cotter Pin, 5/32 x 1" | 2 | - |
| 24 | 4C129 | Wheel Rim -15" (5 Bolt) | 2 | 16.00 |
| 25 | 5C100 | Wheel Bolt | 10 | .10 |
| 26 | 1J463 | Hub Cap | 2 | .10 |
| 27 | 4K036 | Decal, "BRILLION" | 2 | - |
| 28 | 8J310 | Decal, Caution List | 1 | - |
| 29 | 8J794 | Tire, 7.60-15 (not shown) | 2 | |



SPRING SHANK ASSEMBLY

| Index No. | Part No. | Description | *No. Used | Weight |
|-----------|----------|---|-----------|--------|
| 1 | 5C461 | Lock nut - 5/8-11NC | 2 | .1 |
| 2 | 6D409 | Strap | 1 | .4 |
| 3 | 6D410 | Cap | 2 | 1.0 |
| 4 | 6D362 | Spring (inner) | 2 | 1.3 |
| 5 | 6D361 | Spring (outer)-7/16" Wire Diameter prior to 5-28-96 | 2 | 4.0 |
| | 4K076 | Spring (outer)-1/2" Wire Diameter, used after 5-28-96 | 2 | 5.1 |
| 6 | 4J675 | Shank Clamp | 1 | 13.5 |
| 7 | 1C659 | Roll Pin, 1/4 x 1 1/2" | 2 | -- |
| 8 | 2J097 | Pin | 1 | 1.5 |
| 9 | 4J293 | U-Bolt | 2 | 2.2 |
| 10 | 1C211 | Lockwasher, 3/4" | 5 | -- |
| 11 | 1C210 | Nut, 3/4-10NC | 5 | .1 |
| 12 | 2J096 | U-Bolt, 5/8-11NC | 1 | 3.0 |
| 13 | 2J091 | U-Bolt Clip | 1 | 1.5 |
| 14 | 2J092 | Shank Holder | 1 | 6.4 |
| 15 | 6D758 | Capscrew, 3/4 x 3 1/2" | 1 | .5 |
| 16 | 2J094 | U-Bolt, 5/8-11NC | 1 | .9 |
| 17 | 1B166 | Lockwasher, 5/8" | 2 | -- |
| 18 | 1C392 | Nut, 5/8-11NC | 2 | .1 |
| 19 | 6D280 | Strap | 1 | 1.2 |
| 20 | 9D923 | Grease Fitting | 1 | -- |



Intertek

Equipment from Landoll Corporation is built to exacting standards ensured by ISO 9001 registration at all Landoll manufacturing facilities.

LANDOLL CORPORATION

1900 North Street

Marysville, Kansas 66508

(785) 562-5381

800-428-5655 ~ WWW.LANDOLL.COM



Copyright 2014. Landoll Corporation

"All rights reserved, including the right to reproduce this material or portions thereof in any form"
