



OPERATIONS & PARTS MANUAL

FOR MODELS:

- BE-GS045G
- BE-GS05G
- BE-GS06G
- BE-GS07G
- BE-GS08G

PURCHASE DATE	MODEL NO.	SERIAL NUMBER
DEALER		

INTRODUCTION

This manual contains valuable information about your new box scraper. It has been carefully prepared to give you helpful suggestions for operating, adjusting and servicing.

Keep this manual in a convenient place for quick and easy reference. Study it carefully, only by proper care and operation can you expect to receive the service and long life designed and built into this heavy-duty box scraper.

It is the owner's and/or operators' responsibility to:

- Read and understand the information contained in this manual.
- Operate lubricate, assemble and maintain the equipment in accordance with all instructions and safety procedures in this manual.
- Inspect the equipment and replace or repair any parts that are damaged or worn which could cause damage, wear to other parts or cause a safety hazard.

⚠ CAUTION

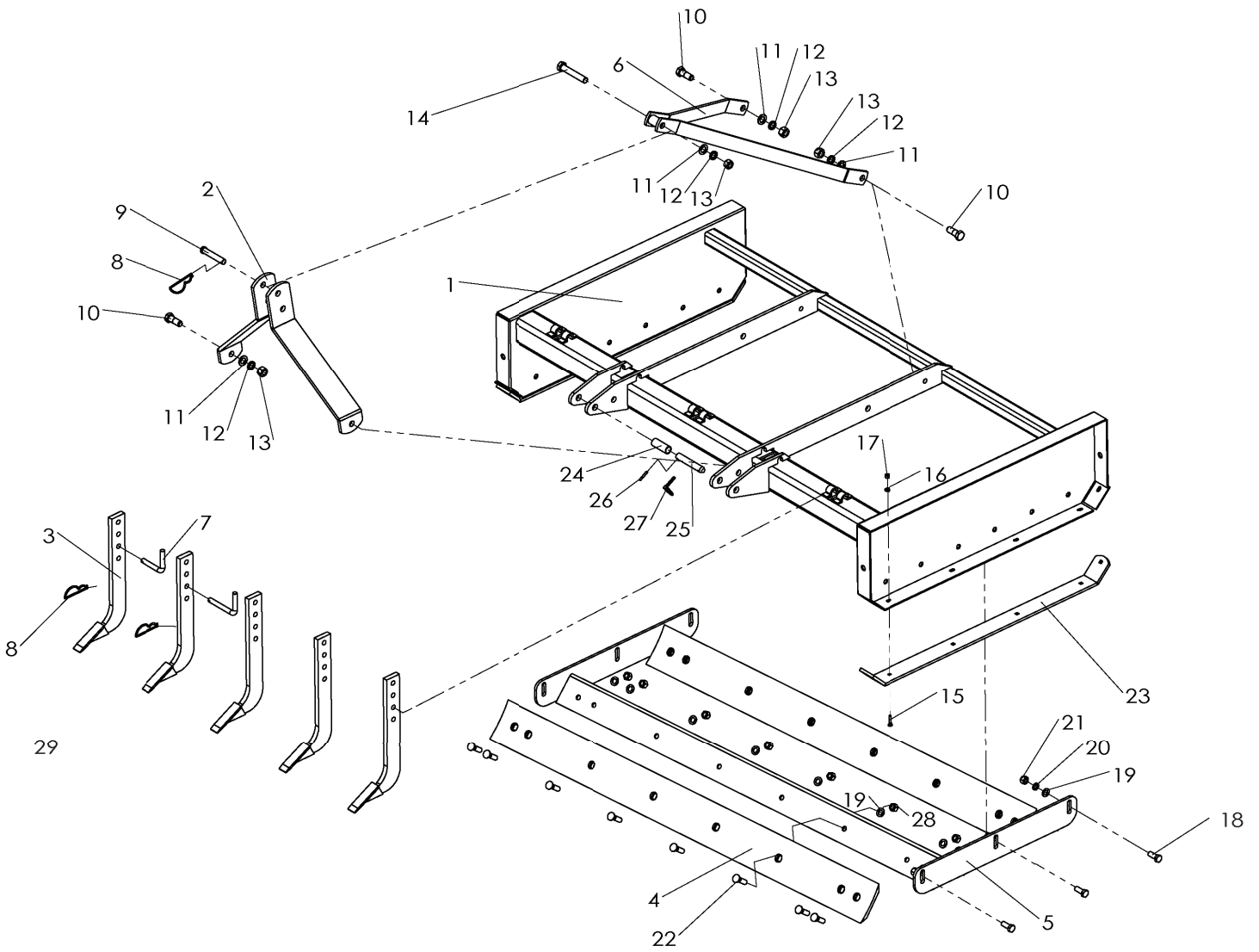
The following safety precautions should be thoroughly understood before attempting to begin assembling this machine.

1. Select an area for assembly that is clean and free of any debris which might cause persons working on the assembly to trip.
2. Do not lift heavy parts or assemblies. Use crane, jack, tackle, fork trucks or other mechanical device.
3. Never put hands, or any part of body, under blocked up assemblies if at all possible.
4. After completing assembly, thoroughly inspect the machine to be sure that all nuts, bolts, hydraulic fittings or any other fastened assemblies have been thoroughly tightened.
5. Before operating equipment, if you have any questions regarding the proper assembly or operations, contact your local dealer.

Important Safety Information!

1. Working with unfamiliar equipment can lead to careless injuries, read this manual and the manual for your tractor, before assembly or operating, to acquaint yourself with the machine. It is the box scraper owner's responsibility, if this machine is used by any other person other than yourself, is loaned or rented, to make certain that the operator is instructed in safe and proper use.
2. The use of this equipment is subjected to certain hazards which can not be protected against by mechanical means or product design. All operators of this equipment must read and understand this entire manual, paying particular attention to safety and operating instructions, prior to using, If there is something in this manual you do not understand, ask your supervisor, or your dealer, to explain it to you.
3. Most accidents occur because of neglect or carelessness. Keep all helpers and bystanders twenty-five (25') feet from an operating box scraper. Only properly trained people should operate this machine.
4. Personal protection equipment including safety glasses, safety shoes and gloves are recommended during assembly, installation, operation, adjustment, maintaining, repairing, removal, or moving the box scraper.
5. Never place any part of your body where it would be in danger if movement should occur during assembly, installation, operation, maintaining, repairing, removal, or moving the box scraper.
6. Before you operate the box scraper, check over all pins, bolts and connections to be sure all are securely in place, replace any damaged or worn parts immediately.
7. Do not allow anyone who is not familiar with the safety rules and operation instructions to use this box scraper.

EXPLODED VIEW & PARTS LIST



REF.	PART NUMBER	DESCRIPTION	QTY
1	GS1G	Main Frame	1
2	GS2G	Front Brace/Lift arm	2
3	GS3G	Shank, Scarifier	5
4	GS4G	Blade	2
5	GS5G	Blade Install Frame	1
6	GS6G	Rear Brace	2
7	GS7G	Shank Lock Pin	5
8	GS8G	Hair Pin	6
9	GS9G	Ø19 Top hitch Pin	1
10	GS10G	Hex Bolt M20x130	4
11	GS11G	Flat Washer M20	5
12	GS12G	Lock Washer M20	5
13	GS13G	Hex Nut M20	5
14	GS14G	Hex Bolt M20x130	1
15	GS15G	Carriage Bolt M10x30	8
16	GS16G	Flat Washer M10	8
17	GS17G	Lock Nut M10	8
18	GS18G	Hex Bolt M16x40	6
19	GS19G	Flat Washer M16	14
20	GS20G	Lock Washer M16	6
21	GS21G	Hex Nut M16	6
22	GS22G	Carriage Bolt M16x40	8
23	GS23G	Skid Plate	2
24	GS24G	Bushing for Cat. 2	1
25	GS25G	Hitch Pin Ø22	1
26	GS26G	Roll Pin Ø6x40	1
27	GS27G	Lynch Pin	1
28	GS28G	Lock Nut M16	8



BRABEREQ.COM
WGSALES@BRABEREQ.COM

PHONE: 604-850-7770
FAX: 604-850-7774
TOLL FREE PHONE: 1-877-588-3311
TOLL FREE FAX: 1-800-665-7334